

NOVEX B08K3C29WV

Novex Brazilian Keratin Hair Treatment Recharge Bundle

User Instruction Manual

1. PRODUCT OVERVIEW

The Novex Brazilian Keratin Hair Treatment Recharge Bundle is designed to provide comprehensive care for hair, focusing on smoothing, frizz control, and damage repair. This bundle includes a shampoo, a deep conditioning mask, and a keratin recharge leave-in treatment, formulated with natural Brazilian Keratin protein.



Image 1.1: The complete Novex Brazilian Keratin Hair Treatment Recharge Bundle, featuring the shampoo, deep hair mask, and keratin recharge.

2. KEY FEATURES AND BENEFITS

- **Smoothens and Straightens Hair:** Ideal for achieving smooth and straight hairstyles, helping to keep hair smoother for longer.
- **Rebuilds Hair and Protects Against Heat:** The deep conditioning mask protects and seals hair against heat and environmental elements, preserving hair color and vital nutrients.
- **Ultra Concentrated Formula:** An intensely hydrating keratin rebuilding treatment suitable for home use, especially beneficial for dense hair types.
- **Frizz Control:** Helps to eliminate frizz and maintain a sleek appearance.
- **High Quality Ingredients:** Formulated with natural non-animal derived keratin protein to rebuild hair, safe for daily use by men and women.



Image 2.1: Visual representation of Brazilian Keratin benefits, including reconstruction of hair fiber, replenishment of moisture, deep repair, and being formaldehyde-free.



Image 2.2: Before and after comparison showing the smoothing and frizz-reducing effects of the treatment on hair.

3. INGREDIENTS

The Novex Brazilian Keratin Hair Treatment Recharge Bundle contains the following ingredients:

Shampoo:

Aqua (Water), Sodium Laureth Sulfate, Cocamidopropyl Betaine, Glycol Distearate, Potassium Chloride, Cocamide Dea, Parfum, Guar Hydroxypropyltrimonium Chloride, Polyquaternium-7, Benzyl Alcohol, Phenoxyethanol, Disodium Edta, Hydrolyzed Keratin, Chlorphenesin, Glycerin, Bht, Lactic Acid, Alpha-Isomethyl Ionone, Benzyl Salicylate.

Hair Mask:

Water (Aqua), Cetearyl Alcohol, Paraffinum Liquidum, Zea Mays Starch, Cetrimonium Chloride, Benzyl Alcohol, Alcohol, Parfum, Hydroxyethyl Urea, Benzoic Acid, Bht, Ceteareth-60 Myristyl Glycol, Linalool, Phenyl Trimethicone, Hexyl Cinnamal, Sorbic Acid, Benzyl Salicylate, Tocopheryl Acetate, Lactic Acid, Hydrolyzed Wheat Protein, Hydrolyzed Corn Protein, Hydrolyzed Soy Protein, Glycerin, Phenoxyethanol, Quaternium-70, Isocetyl Alcohol, Propylene Glycol, Behenyl Alcohol, Amodimethicone, Disodium Lauriminodipropionate Tocopheryl Phosphates, Dimethylpabamidopropyl Laurdimonium Tosylate, Benzophenone-3, Hydroxyethyl Cetearamidopropylidimonium Chloride, Glycine, Arginine Hcl, Acetyl Cysteine, C12-14 Sec-Pareth-7, Lauroyl Lysine, C12- 14 Sec-Pareth-5.

Recharge Leave-In Conditioner:

Water (Aqua), Cetearyl Alcohol, Glycerin, Paraffinum Liquidum, Isopropyl Myristate, Diisopropyl Adipate, Dicaprylyl Carbonate, Behentrimonium Methosulfate, Benzyl Alcohol, Butyrospermum Parkii Butter, Cetrimonium Chloride, Parfum, Alcohol, Disodium Edta, Benzoic Acid, Panthenol, Bht, Linalool, Hexyl Cinnamal, Cetyl Alcohol, Sorbic Acid, Hydrolyzed Wheat Protein, Benzyl Salicylate, Hydrolyzed Soy Protein, Hydrolyzed Corn Protein, Tocopheryl Acetate, Butylphenyl Methylpropional, C10-40 Isoalkylamidopropylethyldimonium Ethosulfate, D-Limonene, Citronellol, Geraniol, Phenoxyethanol, Coumarin, Benzyl Benzoate, Citral, Tocopherol, Isoleugenol, Hydroxycitronellal, Eugenol, Amyl Cinnamal, Cinnamal.

4. USAGE INSTRUCTIONS

Follow these steps for optimal results with the Novex Brazilian Keratin Hair Treatment Recharge Bundle:

1. Step 1: Shampoo Application

Apply the shampoo to wet hair. Lather thoroughly and then rinse. Repeat if necessary to ensure hair is clean and prepared for treatment.

2. Step 2: Hair Mask Application

After shampooing, apply the hair mask to clean, damp hair. Distribute evenly from roots to ends. Leave the mask on for a few minutes (refer to product packaging for specific duration, typically 10-15 minutes for deep conditioning). Rinse thoroughly.

3. Step 3: Leave-In Conditioner Application

Apply the leave-in conditioner to damp hair. Do not rinse. Style your hair as desired. This step helps to seal the hair cuticle, control frizz, and provide ongoing protection.

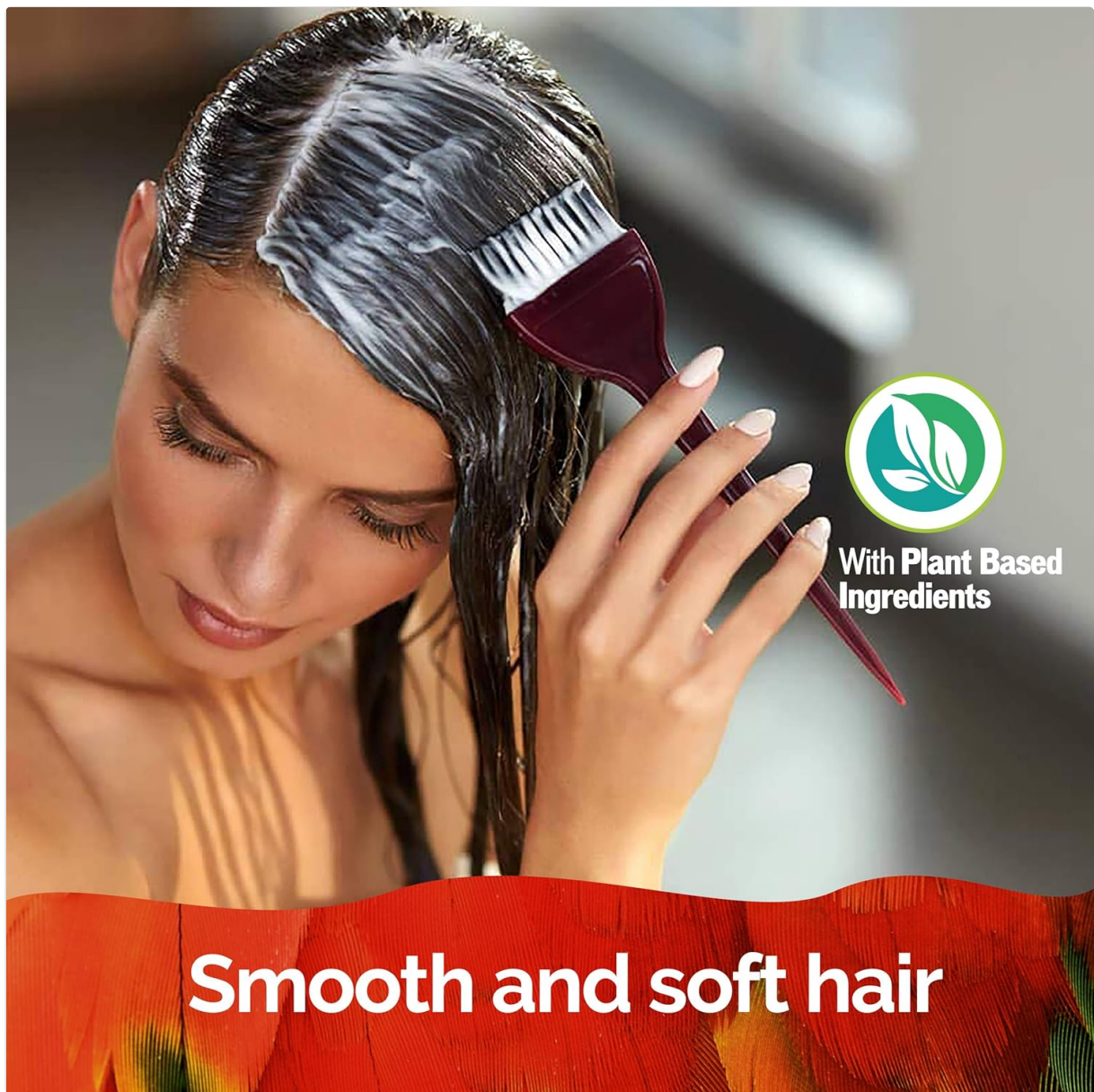


Image 4.1: A person applying the hair mask to damp hair using a brush, demonstrating proper application technique.

5. CARE AND MAINTENANCE

To maintain the effectiveness of the Novex Brazilian Keratin Hair Treatment and ensure the longevity of its benefits, store all products in a cool, dry place away from direct sunlight. Ensure caps are tightly closed after each use to prevent contamination and maintain product integrity. Consistent use as directed will help maintain smooth, frizz-free, and healthy-looking hair.

6. TROUBLESHOOTING

If you are not achieving the desired results with the Novex Brazilian Keratin Hair Treatment Recharge Bundle, consider the following:

- **Insufficient Smoothing/Frizz Control:** Ensure you are applying the products evenly and thoroughly, especially the hair mask and leave-in conditioner. For very dense or frizzy hair, ensure adequate product saturation.
- **Hair Feeling Heavy or Greasy:** This may indicate too much product is being used, particularly the leave-in conditioner. Try reducing the amount applied. Ensure thorough rinsing of the shampoo and hair mask.

- **Lack of Shine:** Ensure hair is completely rinsed of the mask. The leave-in conditioner should provide shine; if not, ensure even distribution.
- **Allergic Reaction/Irritation:** Discontinue use immediately if you experience any irritation, redness, or discomfort. Consult a healthcare professional if symptoms persist. Always perform a patch test before first use if you have sensitive skin or known allergies.

7. PRODUCT SPECIFICATIONS

Specification	Detail
Brand	NOVEX
Hair Type	Frizzy
Item Form	Cream
Product Benefits	Smooths the hair, Controls frizz, Reconstructs hair fiber, Replenishes moisture, Deep repairs
Item Weight	400 Grams (total bundle weight)
Package Dimensions	8.27 x 6.5 x 4.88 inches
ASIN	B08K3C29WV



Image 7.1: Dimensions of the Novex Brazilian Keratin Shampoo bottle, approximately 7.6 inches (19.30 cm) in height.



Image 7.2: Dimensions of the Novex Brazilian Keratin Deep Hair Mask container, approximately 4.5 inches (11.43 cm) in height.



Image 7.3: Dimensions of the Novex Brazilian Keratin Recharge tube, approximately 6.69 inches (17 cm) in height.

8. WARRANTY AND SUPPORT

Specific warranty information for the Novex Brazilian Keratin Hair Treatment Recharge Bundle is not provided in the available product data. For any product-related inquiries, support, or concerns, please refer to the official NOVEX brand website or contact their customer service directly. Contact information may be available on the product packaging or through the brand's official channels.