

Manuals.plus /

› Sonew /

› Sonew Smart Electronic Door Lock (B08JV27R2L) Instruction Manual

Sonew B08JV27R2L

Sonew Smart Electronic Door Lock (B08JV27R2L) Instruction Manual

1. INTRODUCTION

This instruction manual provides detailed guidance for the installation, operation, and maintenance of your Sonew Smart Electronic Door Lock. This lock offers multiple unlocking methods, including fingerprint, password, mobile application, IC card, and traditional key, enhancing security and convenience for your home or office.

2. SAFETY INFORMATION

- Read all instructions carefully before installation and use.
- Do not attempt to disassemble or repair the lock yourself. Contact qualified personnel for service.
- Ensure correct battery polarity when installing batteries.
- Keep mechanical keys in a safe location outside the property.
- Protect the keypad from excessive force or sharp objects.

3. PACKAGE CONTENTS

Verify that all components are present in the package before beginning installation:

- 1 x Door Lock (External Unit)
- 1 x Electric Lock Body (Internal Unit)
- 1 x Lock Ear
- 1 x Lock Cylinder
- 3 x Mechanical Keys
- 1 x Mounting Plate

- 1 x Screw Bag (containing various screws for installation)
- 2 x Mounting Brackets
- 2 x IC Cards
- 1 x Instruction Manual (this document)

4. SPECIFICATIONS

Feature	Specification
Material	Stainless Steel + Aluminium Alloy
Working Power Supply	4.5V-6.5V
Power Supply	4 x AA Batteries (Not Included)
Working Current	≤250mA
Quiescent Current	≤55uA
Unlocking Methods	Mobile Phone App, Fingerprint, Password, IC Card, Key
App Compatibility	For TUYA App
Card Type	13.56MHZ IC Card
Fingerprint Capacity	100
Card Capacity	100
Password Capacity	100
Password Length	6-8 Digits (Virtual Password: 16 Digits)
Resolution	500DPI
Rejection Rate	≤0.15%
False Recognition Rate	≤0.00004%
Operating Humidity	20%-93%
Working Temperature	0°C-60°C
Fingerprint Keypad Size	166 x 58 x 35mm (6.5 x 2.3 x 1.4in)

5. SETUP AND INSTALLATION

The Sonew Smart Electronic Door Lock is designed for indoor single-head lock installation. Follow these steps for proper setup:

1. **Prepare the Door:** Ensure your door is compatible with the lock's dimensions.
2. **Install the Lock Body:** Mount the electric lock body (internal unit) onto the door frame or door, ensuring proper alignment with the strike plate.
3. **Install the External Unit:** Position the external keypad unit on the outside of the door.

4. **Connect Wiring:** Carefully connect the wiring between the external keypad unit and the internal lock body as per the diagram.
5. **Install Batteries:** Open the battery compartment on the internal unit and insert 4 AA batteries (not included), observing correct polarity.
6. **Secure Components:** Use the provided screws and mounting brackets to firmly secure both internal and external units.
7. **Test Operation:** After installation, test the mechanical key and basic lock/unlock functions before programming.



Figure 5.1: Internal and External Components Diagram. This image illustrates the various parts of the lock, including the door sensor, motor connector, battery box, resetting button, touch keypad, fingerprint reader, card reading area, keyhole cover, and mechanical keyhole.

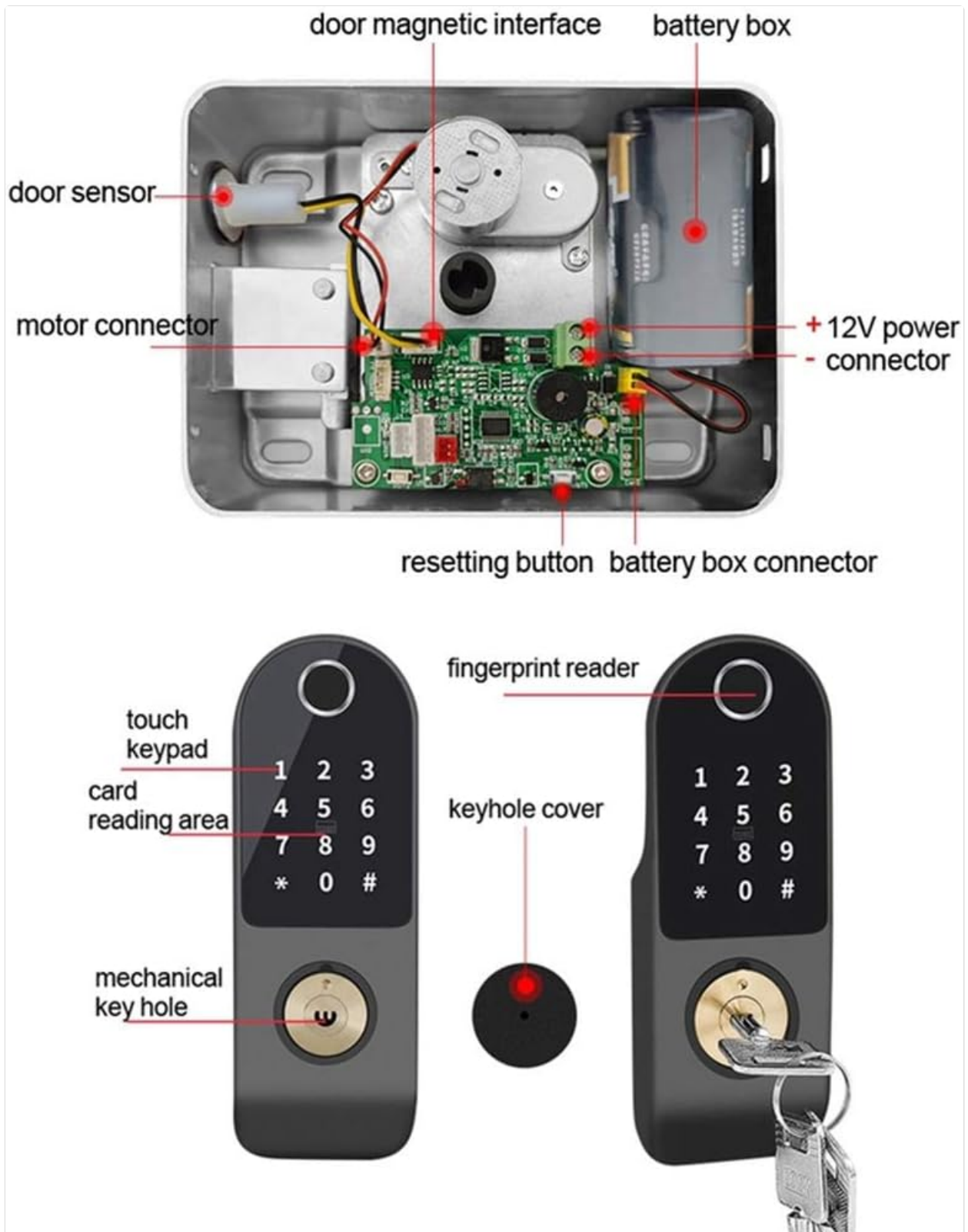


Figure 5.2: Stainless Steel Rotary Switch. This image shows the internal stainless steel rotary mechanism, designed for quiet and low-noise operation.

6. OPERATING INSTRUCTIONS

Your Sonew Smart Electronic Door Lock offers multiple convenient ways to unlock your door.

6.1. Fingerprint Unlocking

The lock features a sensitive fingerprint reader. To unlock, place your registered finger on the fingerprint sensor. The lock will disengage if the fingerprint is recognized. The lock supports up to 100 unique fingerprints.



Figure 6.1: Overview of Unlocking Methods. This image displays the lock alongside icons representing fingerprint, password, card, key, and app unlock options.

6.2. Password Unlocking

Enter your registered 6-8 digit password on the capacitive touch screen keypad. The lock supports up to 100 passwords.

Capacitive touch screen

Touch screen unlock sensitive



Figure 6.2: Capacitive Touch Screen. A hand is shown interacting with the sensitive touch screen keypad for unlocking.

6.2.1. Anti-Peep Password Function

To prevent others from observing your password, you can enter a sequence of random digits before and after your actual password. For example, if your password is **66666**, you can enter **123 + 66666 + 345**. The lock will recognize the correct password within the longer sequence.

Password anti-peeping function

Providing effective protection



Figure 6.3: Password Anti-Peeping Function. The image highlights the keypad, indicating the ability to enter extra digits for security.

6.3. Mobile App Unlocking

Download and install the TUYA app on your smartphone. Follow the app's instructions to pair it with your lock. Once paired, you can remotely unlock the door using the app.



Figure 6.4: Mobile App Unlocking. A hand holding a smartphone is shown next to the lock, illustrating the app control feature.

6.4. IC Card Unlocking

Present a registered 13.56MHZ IC card to the card reading area on the lock. The lock will disengage upon successful card recognition. The lock supports up to 100 IC cards.



Figure 6.5: IC Card Unlocking. An IC card is being held near the lock's card reading area to unlock the door.

6.5. Key Unlocking

In case of electronic malfunction or battery depletion, the lock can be opened using the provided mechanical keys. The keyhole is discreetly located at the bottom of the external unit, often covered by a small cap.

Stainless steel rotary switch

Quiet design, low noise



Figure 6.6: Hidden Keyhole and Emergency Charging Port. This image shows the location of the hidden mechanical keyhole and the emergency charging port at the bottom of the lock.

6.6. Automatic Lock Function

For enhanced security, the lock features an automatic lock function. If an incorrect password is entered more than 5 times within a 5-minute period, the keypad will automatically lock for 90 seconds. During this period, the system will not respond to any input. This feature helps prevent unauthorized access attempts.

6.7. Low Battery Reminder and Emergency Power

The lock is equipped with a low power consumption technology for extended battery life. When the battery voltage drops below 4.5V, the lock will issue a low battery alarm. After this alarm, the lock can still be unlocked approximately 200 times. In case of complete battery depletion, an emergency charging interface is available on the external unit (refer to Figure 6.6) to provide temporary power for unlocking.

7. MAINTENANCE

- **Cleaning:** Wipe the lock's surface with a soft, dry cloth. Avoid using abrasive cleaners or solvents that could damage the finish or electronic components.

- **Battery Replacement:** Replace all four AA batteries when the low battery alarm sounds. Use high-quality alkaline batteries for optimal performance.
- **Keypad Care:** Keep the touch keypad clean and dry to ensure sensitive operation.
- **Fingerprint Sensor:** Ensure the fingerprint sensor is clean and free of debris for accurate recognition.

8. TROUBLESHOOTING

If you encounter issues with your Sonew Smart Electronic Door Lock, refer to the following common problems and solutions:

Problem	Possible Cause	Solution
Lock does not respond	Dead batteries; loose wiring; system error	Replace batteries; check wiring connections; use emergency charging port; try mechanical key.
Fingerprint not recognized	Fingerprint sensor dirty; unregistered fingerprint; incorrect finger placement	Clean sensor; ensure finger is registered; place finger flat on sensor.
Password not working	Incorrect password; lock-out due to multiple failed attempts; unregistered password	Verify password; wait 90 seconds if locked out; ensure password is registered.
IC Card not working	Unregistered card; card damaged; incorrect card placement	Ensure card is registered; try another card; place card correctly on reading area.
App connection issues	Bluetooth/Wi-Fi off; app not paired; network issues	Ensure Bluetooth/Wi-Fi is on; re-pair device in app; check network connection.

9. WARRANTY AND SUPPORT

Specific warranty information for the Sonew Smart Electronic Door Lock (Model B08JV27R2L) is not provided in this manual. Please refer to the product packaging or the retailer's website for warranty details.

For technical support, troubleshooting assistance beyond this manual, or inquiries regarding warranty claims, please contact the retailer or manufacturer directly through their official support channels. Keep your purchase receipt and product model number (B08JV27R2L) readily available when seeking support.