

Microsoft UTH-00001

Microsoft 4K Wireless Display Adapter User Manual

Model: UTH-00001

1. INTRODUCTION

The Microsoft 4K Wireless Display Adapter provides a robust and reliable method to project your content, photos, and videos onto a larger screen. Designed for compatibility with 4K TVs and optimized for a quick, seamless connection, this adapter offers a faster experience than previous wireless display adapters. It is an ideal solution for Surface and Windows 10 PC users, as well as Android device users, who need to present to clients, collaborate with students, or establish a quick conferencing setup in various environments.

This manual provides detailed instructions on setting up, operating, and maintaining your Microsoft 4K Wireless Display Adapter to ensure optimal performance and longevity.

2. KEY FEATURES

- **4K Wireless Display:** Project content wirelessly to a 4K TV or monitor over Miracast, supporting resolutions up to 4K at 30 frames per second.
- **Easy Setup & Reliable Connection:** Enjoy straightforward setup with a stable connection range of up to 10 meters in open environments, or up to 7 meters in typical living room or office settings.
- **Broad Device Support:** Compatible with Surface Duo and other Miracast-enabled Android devices, as well as Windows 10 PCs.
- **Quick Connect:** Features faster bootup times and simpler operation compared to previous Wireless Display Adapter models.
- **HDMI-CEC Support:** Seamlessly connect to your TV without needing to manually change inputs using a remote control.

3. COMPATIBILITY REQUIREMENTS

To use the Microsoft 4K Wireless Display Adapter, ensure your devices meet the following criteria:

- **Operating System:** Compatible with Windows 10 devices (with the latest updates) and Android phones.
- **Miracast Enabled:** All source devices (PCs, phones) must be Miracast enabled.
- **HDCP Support:** Required for most streaming services.
- **Display Requirements:** An available HDMI port on your TV or monitor.
- **Power Requirements:** An available USB port for power.
- **Supported Devices:** Includes Surface devices such as Surface Book 3/2/1, Surface Pro X/7/6/5, Surface

Laptop 3/2/1, Surface Studio 2/1, Surface Go/Go 2, and other Miracast-enabled Windows 10 and Android devices.

- **Playback Resolution:** Playback resolution is 1080p on 4K displays for most entertainment streaming services.

4. SETUP GUIDE

Follow these steps to set up your Microsoft 4K Wireless Display Adapter:

1. **Connect the Adapter to Your Display:**

Plug the HDMI connector of the Wireless Display Adapter into an available HDMI port on your 4K TV or monitor. Then, plug the USB connector into an available USB port on your TV or monitor for power. If your display does not have a USB port, you can use a USB wall adapter (not included).



Image 1: The Microsoft 4K Wireless Display Adapter showing its HDMI and USB connectors. Ensure both are connected to your display.

2. Power On Your Display:

Turn on your TV or monitor and select the correct HDMI input source to which the adapter is connected.

3. Prepare Your Source Device (Windows 10 PC):

On your Windows 10 PC, press the **Windows key + K**. This will open the Connect pane.

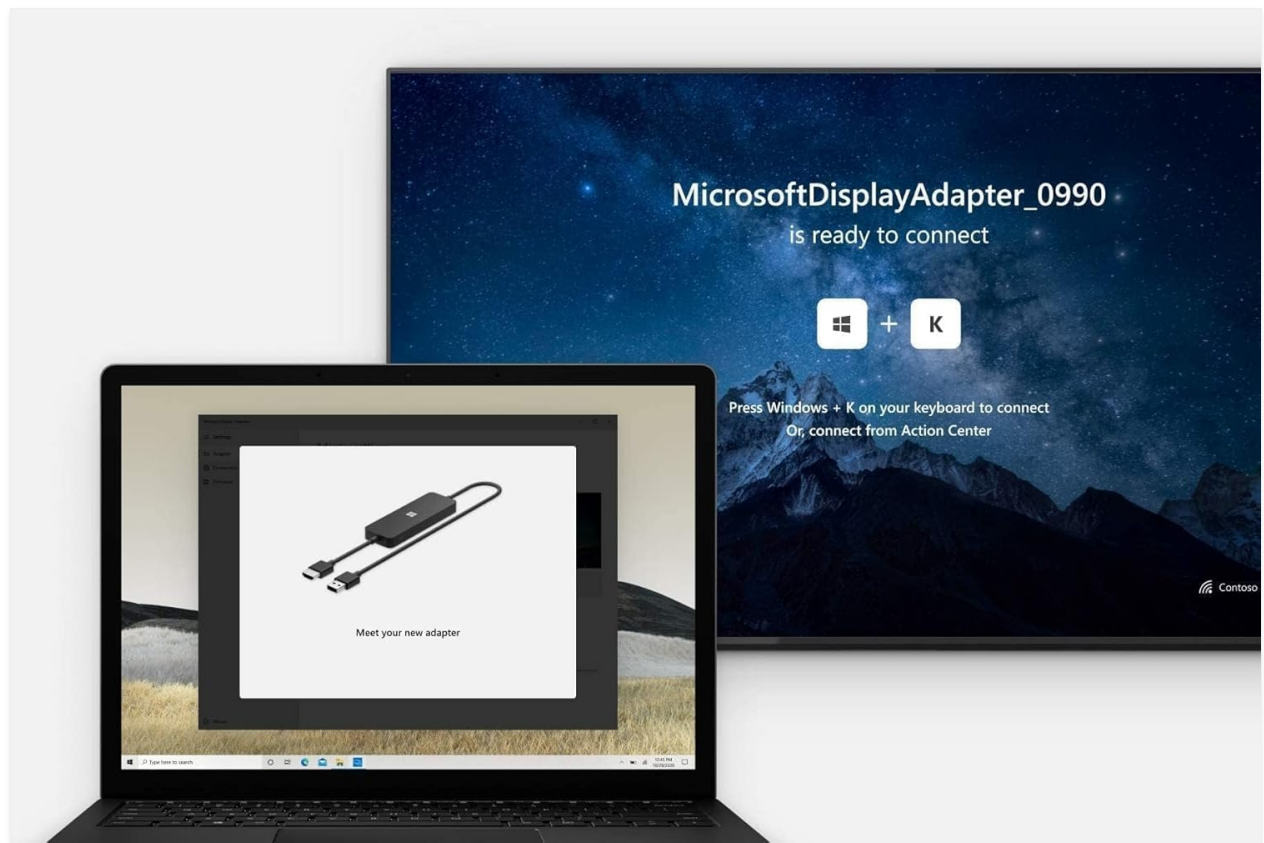


Image 2: A laptop displaying a connection prompt, with a TV screen showing the adapter is ready to connect. This screen appears on your display once the adapter is powered on.

4. Connect to the Adapter:

In the Connect pane on your PC, select the Microsoft Wireless Display Adapter from the list of available devices. The name will typically appear as "MicrosoftDisplayAdapter_XXXX" where XXXX are unique characters.

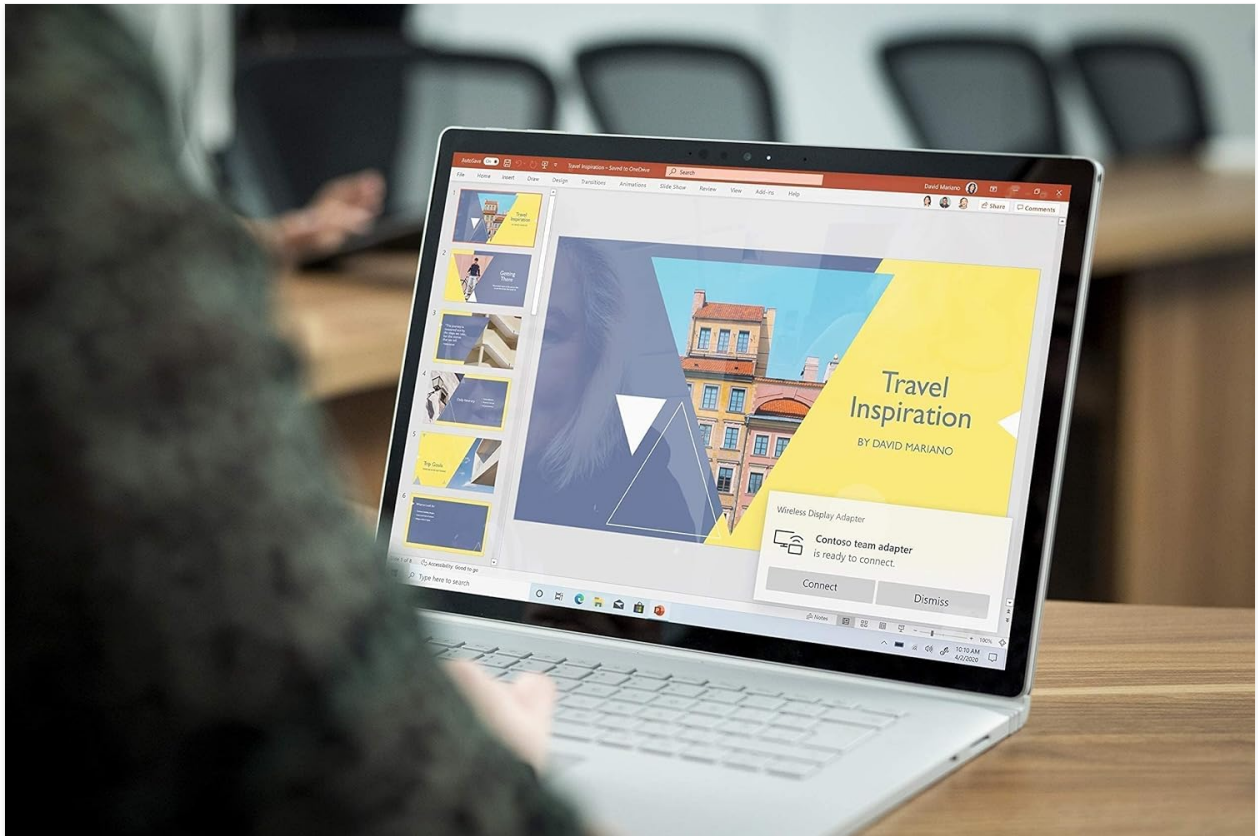


Image 3: A laptop displaying a presentation, with a notification indicating the Wireless Display Adapter is ready to connect. This shows the user interface for connecting.

5. Prepare Your Source Device (Android):

On your Android device, navigate to the screen mirroring or cast settings. This is often found in the Quick Settings panel or under Display settings. Look for options like "Cast," "Screen Mirroring," "Smart View," or "Wireless Display."

6. Connect to the Adapter (Android):

Select the Microsoft Wireless Display Adapter from the list of available devices. Your Android device's screen should now be mirrored on your TV or monitor.

5. OPERATING INSTRUCTIONS

Once connected, you can manage your display settings from your source device:

- **Windows 10 Display Modes:**

After connecting, you can choose how your screen is projected. Press **Windows key + P** to open the Project menu and select one of the following options:

- **Duplicate:** Shows the same content on both your device and the external display.
- **Extend:** Extends your desktop across both displays, allowing you to have different content on each.
- **Second screen only:** Displays content only on the external display, turning off your device's screen.

- **Disconnecting:**

To disconnect, open the Connect pane (Windows key + K) and click "Disconnect" next to the adapter's name. For Android, turn off screen mirroring from your device's settings.

- **HDMI-CEC Functionality:**

If your TV supports HDMI-CEC, the adapter may automatically switch your TV's input to the correct HDMI port when it detects a signal from your connected device, simplifying the connection process.

6. MAINTENANCE AND CARE

To ensure the longevity and optimal performance of your Microsoft 4K Wireless Display Adapter, follow these simple maintenance guidelines:

- **Cleaning:** Use a soft, dry, lint-free cloth to clean the adapter. Do not use liquid cleaners, aerosols, or harsh chemicals.
- **Storage:** When not in use, store the adapter in a cool, dry place away from direct sunlight and extreme temperatures.
- **Handling:** Avoid bending or twisting the cables excessively. Do not drop the adapter or subject it to strong impacts.
- **Firmware Updates:** Periodically check for firmware updates for the adapter through the Microsoft Wireless Display Adapter app (available on the Microsoft Store) to ensure the best performance and compatibility.

7. TROUBLESHOOTING

If you encounter issues with your Wireless Display Adapter, try the following troubleshooting steps:

- **No Display/Black Screen:**
 - Ensure the adapter's HDMI and USB cables are securely connected to your TV/monitor.
 - Verify your TV/monitor is set to the correct HDMI input source.
 - Try connecting the USB power cable to a different USB port or a dedicated USB wall adapter.
 - Restart your source device (PC/phone) and try connecting again.
- **Cannot Connect/Adapter Not Found:**
 - Ensure your source device is Miracast-enabled and has the latest operating system updates.
 - Move closer to the adapter to ensure you are within range.
 - Try resetting the adapter. Locate the small reset button on the side of the adapter (often recessed, requiring a paperclip to press). Press and hold for about 10 seconds until the adapter restarts.

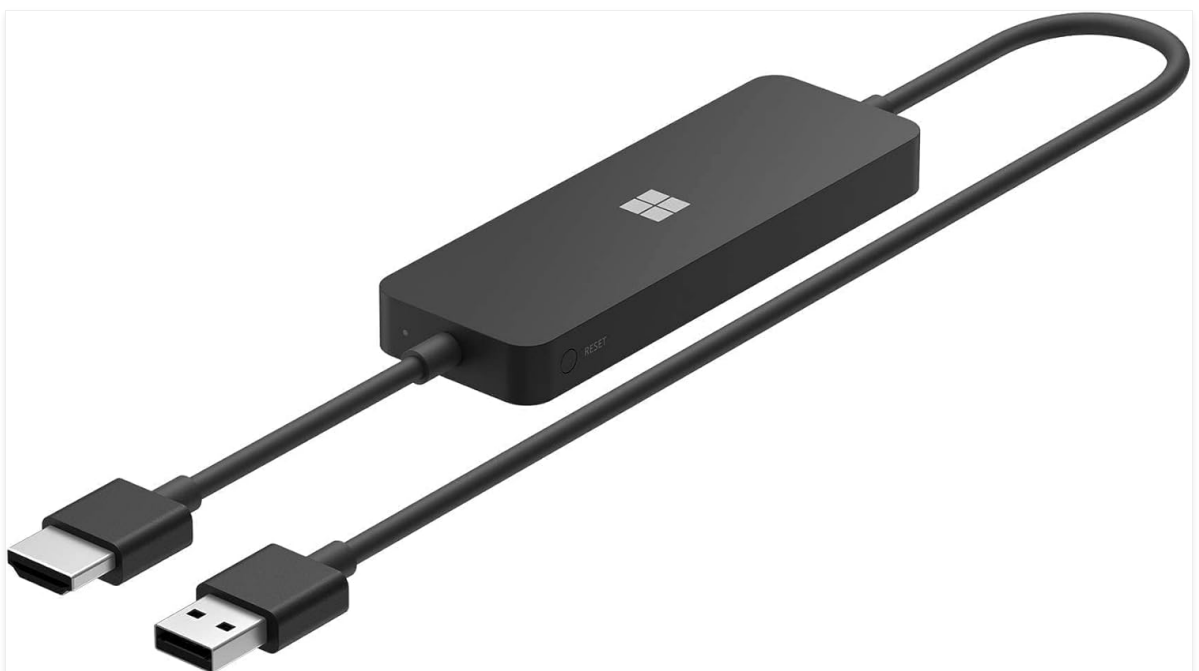


Image 4: An angled view of the Microsoft 4K Wireless Display Adapter, highlighting the small reset button. Use a paperclip to press and hold this button for a few seconds to reset the device.

- Temporarily disable any VPN or firewall software on your source device.

• **Poor Performance/Lagging Video:**

- Reduce the distance between your source device and the adapter.
- Ensure there are no major obstructions (e.g., thick walls, large metal objects) between the devices.
- Close unnecessary applications on your source device to free up resources.
- Check for and install any available firmware updates for the adapter.

8. SPECIFICATIONS

Attribute	Detail
Brand	Microsoft
Series	4K Wireless Display Adapter
Model Number	UTH-00001
Operating System Compatibility	Windows 10, Miracast-enabled Android devices
Item Weight	0.15 ounces
Product Dimensions (LxWxH)	4.1 x 6.95 x 0.88 inches
Color	Black
Connector Type	HDMI
Specific Uses	Display, Monitor, TV
Max Resolution	4K @ 30fps (1080p for most streaming services)
Wireless Range	Up to 10 meters (open environment), 7 meters (living room/office)

9. WARRANTY AND SUPPORT

For information regarding the product warranty, please refer to the warranty card included with your purchase or visit the official Microsoft support website. For technical assistance, troubleshooting guides, and frequently asked questions, please visit support.microsoft.com. Always ensure you are using official Microsoft resources for support and updates to guarantee the authenticity and security of information.



Learn how to set up and install the Microsoft 4K Wireless Display Adapter for seamless wireless display connectivity. Includes setup steps, app information, and performance tips.



Discover how Microsoft 365 provides a secure foundation for business growth, enhancing productivity with tools like Teams, Outlook, Word, and Excel, while protecting against cyber threats.



A comprehensive guide to Microsoft hardware products, covering safety precautions, limited warranty details, and customer support options. Includes information on AC-powered and battery-powered devices, laser safety, and regulatory compliance.



Comprehensive guide to Microsoft Azure Arc and Arc-enabled SQL Server, detailing hybrid cloud strategies, partner program requirements, benefits, and incentives. Learn about managing, governing, and protecting SQL Server from Azure, and how to achieve Solutions Partner designations.

Insight[®]

Microsoft

Work better together on the go

Collaboration and mobility tools are essential in today's digital workplace.



Achieve more together, from anywhere

The rise of mobile technology, cloud computing and remote working makes effective collaboration and mobility tools essential in today's modern workplace. Microsoft offers a wide range of accessories that empower your employees to get more done together on the go.



Make meetings more effective with a Microsoft[®] Wireless Display Adapter to display presentations clearly and quickly from your laptop to any screen.



Reduce distractions and make conversations more productive with high-quality headsets and noise-canceling microphones.



Connect with your teams and customers **Remain anywhere** with the Lync[®] Studio for Business feature.



Get work done on the go with portable mice that can easily fit into your pocket or bag.

With Microsoft accessories you get:

- The best of Windows built in, with a customizable Windows button and touch pad that features like Cortana, OneDrive and virtual desktops just a click away.
- Long battery life and easy integration with your meeting apps, PCs, monitors and printers, including a wide variety of Windows-compatible devices.
- Accessories built to work best with Windows because they're designed by the people who created it.

1.800.INSIGHT | insight.com

[\[pdf\]](#) Datasheet Accessories

Download the datasheet Work Better Together on Go Insight work better together go insight content dam web en US s microsoft |||

Work better together on the go Collaboration and mobility tools are essential in today s digital wor ... 8JS-00001 MSRP: 94.99 Modern Webcam SKU: 8L5-00001 MSRP: 64.99 4k Wireless Display Adapter SKU: **UTH-00001** MSRP: 69.99 Why Insight for PC Accessories At Insight, we define, architect, implement ...

lang:en score:15 filesize: 350.29 K page_count: 2 document date: 2022-04-26