

Delamu B08JLPMPRM

Delamu J-Channel Cable Raceway (Model: B08JLPMPRM) Instruction Manual

INTRODUCTION

The Delamu J-Channel Cable Raceway is designed to help organize and conceal messy cables in your workspace and home. This 4-pack of self-adhesive raceways provides an efficient solution for managing computer cables, TV wires, and other power cords, creating a cleaner and safer environment.

- **Maintain Order:** Ideal for creating a space free from messy cables in offices and homes.
- **Enhanced Efficiency:** Includes cable ties and clamps for comprehensive cable management.
- **User-Friendly Open Design:** Allows for easy addition or adjustment of cables.
- **Traceless Installation:** Features high-strength self-adhesive backing, eliminating the need for drilling.
- **Generous Capacity & Safety:** Each raceway can accommodate at least 10 cables and is made from durable PVC plastic.

Your browser does not support the video tag.

Video: Delamu J-Channel Cable Raceway hides messy cables. This video demonstrates the product's ability to conceal various cables, transforming a cluttered area into an organized space.

SETUP INSTRUCTIONS

Follow these steps for a quick and secure installation of your Delamu J-Channel Cable Raceway:

1. **Clean the Surface:** Ensure the desk or wall surface where the raceway will be applied is clean and dry.
2. **Apply Adhesive:** Peel off the backing release liner from the high-strength self-adhesive tape on the back of the raceway.

3. **Position and Press:** Stick the J-channel firmly onto the desired surface (e.g., under the desk, along a wall) and press it securely for optimal adhesion.
4. **Allow Curing Time:** Wait at least 24 hours before placing cables inside the raceway to ensure the adhesive has fully bonded.

The kit also includes 5 cable ties and 2 cable clamps to further assist in organizing your cables.

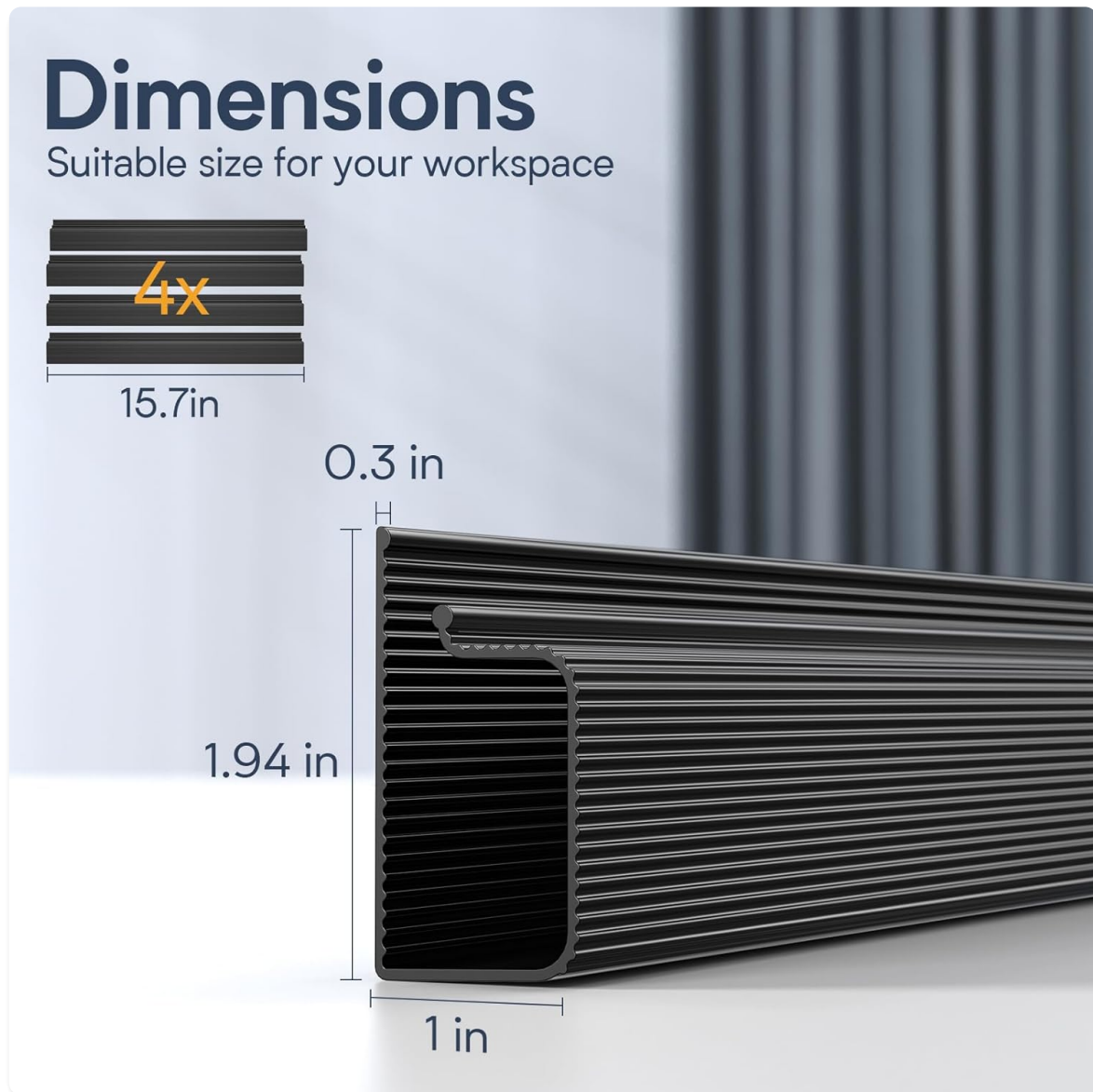


Image: Visual guide showing the four quick installation steps: clean surface, peel adhesive, stick firmly, and wait 24 hours before adding cables.

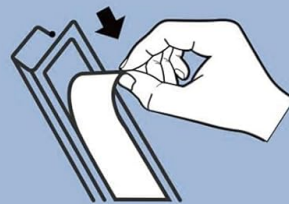
Quick Installation

1



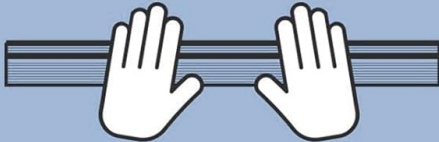
Clean the desk/wall surface

2



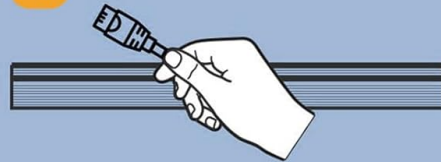
Peel off the backing release liner of the adhesive

3



Stick the J channel to the desired surface and press firmly

4



Wait at least 24 hours to ensure strong adhesion before you put inside the cables

Image: Close-up of the Delamu J-Channel Cable Raceway highlighting its super strong adhesive backing for easy, drill-free installation.

OPERATING INSTRUCTIONS

The Delamu J-Channel Cable Raceway features an innovative open design for convenient cable management:

- **Adding Cables:** Simply guide your cables into the open side of the J-channel. The design allows for easy insertion without needing to thread cables through a closed channel.
- **Adjusting Cables:** If you need to add or remove cables, the open design makes adjustments straightforward and hassle-free.
- **Capacity:** Each raceway is designed to accommodate at least 10 standard cables, providing ample space for most setups.



Image: A visual comparison illustrating the unique open J-channel design of the Delamu raceway, making it easier to place and remove cables compared to other designs.



Image: An illustration demonstrating the large capacity of the Delamu J-Channel Cable Raceway, capable of holding and hiding up to 10 cables and wires.

MAINTENANCE

To ensure the longevity and appearance of your Delamu J-Channel Cable Raceway:

- **Cleaning:** Wipe the raceways with a soft, damp cloth to remove dust and debris. Avoid abrasive cleaners that may damage the plastic.
- **Adhesive Removal:** If you need to remove or reposition the raceway, gently warm the adhesive with a blower dryer or heat gun to soften it. This will allow for slower, careful peeling without leaving residue or damaging the surface.
- **Material Safety:** The PVC plastic material is designed for safety, presenting a charred surface rather than open flame at high temperatures.

TROUBLESHOOTING

Here are some common issues and solutions:

- **Adhesive Not Holding:** Ensure the surface was thoroughly cleaned and dry before application. For optimal adhesion, allow 24 hours before adding cables. If the raceway is holding a large number of heavy cables, consider using additional mounting methods like screws (not included) for enhanced security, especially if the adhesive shows signs of weakening over time.
- **Difficulty Adding/Removing Cables:** The J-channel design is open for easy access. If you find it difficult, ensure cables are not excessively bundled or tangled before insertion.

SPECIFICATIONS

Feature	Detail
Brand	Delamu
Model Number	B08JLPMPRM
Color	Black
Material	Plastic (PVC)
Product Dimensions (each)	15.7" L x 2" W x 1" H
Number of Pieces	4 (raceways)
Total Length	62.8 inches (approx. 5.23 feet)
Installation Type	Self-Adhesive
UPC	619660478274



Large Capacity

Holds and hides up to
10 cables

Image: Diagram illustrating the dimensions of the Delamu J-Channel Cable Raceway: 15.7 inches length, 1.94 inches height, and 1 inch width.

WARRANTY AND SUPPORT

Delamu is committed to customer satisfaction. Each wire organizer undergoes meticulous inspection to ensure excellent quality and reliability.

If you have any concerns or questions about your purchase, please contact Delamu Official for assistance. Your satisfaction is our top priority.