

Cell Spa Digital LCD Display Detox Ion Ionic Aqua Foot Bath Spa Chi Cleanse Fir Belt

Cell Spa Digital LCD Display Detox Ion Ionic Aqua Foot Bath Spa Instruction Manual

Model: Digital LCD Display Detox Ion Ionic Aqua Foot Bath Spa Chi Cleanse Fir Belt

Brand: Cell Spa

1. INTRODUCTION

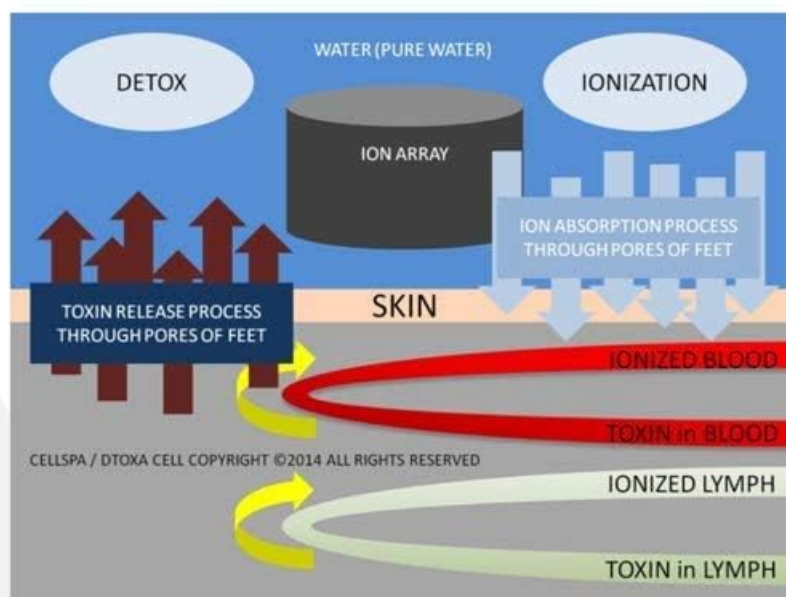
Thank you for choosing the Cell Spa Foot Bath Machine. This device utilizes electrical currents to ionize water, facilitating a foot bath experience. The process involves the interaction of positive and negative energy ions with the body through the feet immersed in water.



Thank you for choosing CELLSPA® Foot Bath Machine.

What is the FOOT BATH MACHINE

Many consumers question how this machine works and what exactly the machine does for the user. The machine uses electrical currents to de-compound water into massive amounts of +/- energy ions. All humans have energy ions in our human body and the machine is designed to react to the ions through the use of water by soaking your feet in the water.



This diagram illustrates the principle of the foot bath machine, showing how an ion array in water facilitates the absorption of ions and the release of toxins through the skin.

2. IMPORTANT SAFETY INFORMATION AND WARNINGS

Read all instructions and warnings carefully before use. Failure to do so may result in injury or damage to the device.

- Never operate any electrical or electronic devices while undergoing your foot bath session.
- If you are ill, have any disease, or are pregnant, consult a medical doctor immediately before using this product.

- This technology should not replace any competent medical advice you are currently receiving for a serious medical condition.
- It is not recommended for persons with a pacemaker to undertake this therapy.
- The operation of this product is at the risk of the user.
- For external use only. Keep out of reach of children.
- Hot or warm baths should not be used by persons with diabetes unless advised by your doctor.
- Always start with a very small amount to test your sensitivity.
- Ask your doctor before use if you are pregnant or have a medical condition.
- If any signs of irritation occur, discontinue use and consult your doctor.
- Do not swallow. Avoid contact with eyes.
- These statements have not been evaluated by the FDA and are not intended to diagnose, treat, cure, or prevent any disease or health condition.

Do Not Use If You Have Any of the Following Conditions:

- Users who have battery / electrical powered devices in body (pacemaker, pumps, etc.)
- Users who have had organ transplants of any kind.
- Pregnant women.
- Sufferers of heart disease or heart-related health issues.
- Severe health-related problems, such as seizures.
- Damaged skin or open wounds near the treatment area.
- Minors.

Salt Use Reference

CAUTION

WHEN TO ADD SALT

- Continued reading of less than E= 0.5 amperage levels
 1. Add a pinch of salt (Use salt very sparingly)
- Never add salt when using the machine for the first time. This helps ensure checking the saline levels of your local water. The machine should read 0.5 ~ 1.6 when first using the machine. (Varies by user)
- Salt is only added when levels are too low
- Please contact us should you have any questions

CAUTION

If you or anyone have the following condition(s), PLEASE DO NOT USE THE MACHINE.

- Users who have battery / electrical powered devices in body (pacemaker, pumps etc...)
- Users who have had organ transplants of any kind
- Pregnant women
- Sufferers of heart disease or heart related health issues etc...
- Severe health related problems. Seizures etc...
- Damaged skin or open wounds near the treatment area
- Minors

This image highlights critical safety warnings and conditions under which the device should not be used.

WARNING

For external use only. Keep out of reach of children. Use only as directed. Hot or warm baths should not be used by persons with diabetes unless advised by your doctor. Always start with a very small amount to test your sensitivity. Ask your doctor before use if you are pregnant or have a medical condition. If any signs of irritation occur, discontinue use and consult your doctor. Do not swallow. Avoid contact with eyes.



General warnings for external use, including advice for individuals with diabetes, pregnant women, or those with medical conditions.

3. PACKAGE CONTENTS

Verify that all items are present in your package:

- 1 x Digital LCD Display Detox Ion Ionic Aqua Foot Bath Spa Unit
- 1 x 16 Ounce Eucalyptus Scented Epsom Salt
- 2 x Black Cylinder Arrays
- 1 x Wrist Wrap
- 1 x Far Infrared Waist Belt
- 1 x Power Cord
- 1 x Aluminum Carrying Case
- 1 x Instruction Book (this manual)



The main Cell Spa unit, featuring the digital LCD display and control panel.

4. SETUP

1. **Placement:** Place the foot bath unit on a stable, flat surface near an electrical outlet. Ensure there is enough space for a foot basin.
2. **Connect Power:** Plug the power cord into the unit and then into a suitable electrical outlet.
3. **Prepare Foot Basin:** Fill a foot basin with clean, pure water. Do not use well or spring water.
4. **Insert Array:** Connect one black cylinder array to the "ARRAY" port on the unit. Place the array into the water in the foot basin.
5. **Attach Wrist Wrap:** Connect the wrist wrap to its designated port on the unit and secure it comfortably around your wrist.
6. **Optional Far Infrared Waist Belt:** If desired, connect the far infrared waist belt to its port and secure it around your waist.



Detail of the control panel, indicating connection points for the array and wrist wrap, and the main operational buttons.

5. OPERATING INSTRUCTIONS

5.1. Starting a Session

1. Ensure the unit is set up as described in Section 4.
2. Immerse your feet into the water in the foot basin.
3. Press the "START" button on the unit to begin the session.
4. The LCD display will show session time and other parameters.
5. A typical session lasts 30 minutes.
6. To stop the session at any time, press the "STOP" button.

5.2. Salt Use Reference

Salt is used to adjust the conductivity of the water, which affects the amperage levels displayed on the unit. Proper amperage is crucial for effective operation.

- **When to Add Salt:** Add a pinch of salt if the continued reading of amperage levels is less than $E=0.5$. Use salt very sparingly.
- Never add salt when using the machine for the first time. This helps ensure checking the saline levels of your local water.
- The machine should read $0.5 \sim 1.6$ when first using the machine. (Varies by user and water quality).
- Salt is only added when levels are too low.

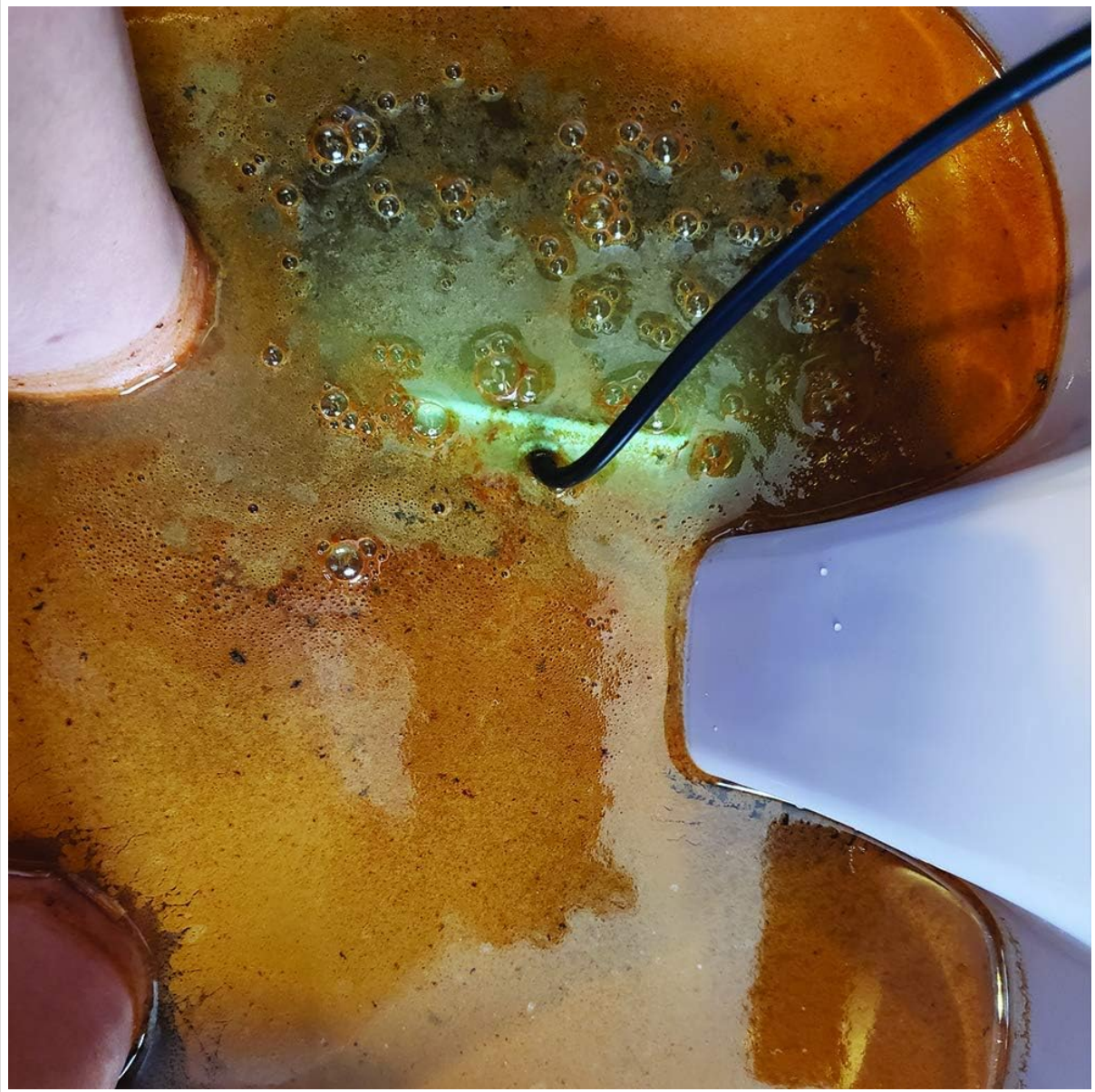
5.3. Expected Water Color Reference

During a session, the water color may change. The following chart provides a reference for potential indicators:

Color Reference

| COLOR RESULT | COLOR INDICATOR |
|-----------------------------|---------------------------|
| BLACK | Liver Related |
| BLACK FLECKS | Heavy Metals |
| BROWN | Liver, Cell Debris |
| DARK GREEN | Gall Bladder |
| ORANGE | Joints |
| RED FLECKS | Blood Clot |
| WHITE CHEESE LIKE PARTICLES | Yeast |
| WHITE FOAM | Lymphatic System |
| YELLOW GREEN | Kidney, Bladder, Prostate |

This chart provides a guide to interpret the color changes observed in the foot bath water during a session.



An example of water discoloration after a foot bath session.

5.4. Eucalyptus Detox Foot Soak Directions

The included Eucalyptus Scented Epsom Salt can be used for foot soaks or during a foot detox session.



The Eucalyptus Detox Foot Soak product packaging.

EUCALYPTUS

FOOT SOAK

- DETOX
- RELAX
- SOFTEN SKIN
- RELIEVE STRESS
- INHIBITS FUNGUS
- HEALTHY TOENAIL
- ELIMINATES ODORS

WARNING
For external use only. Keep out of reach of children. Use only as directed. Hot or warm baths should not be used by persons with diabetes unless advised by your doctor. Always start with a very small amount to test your sensitivity. Ask your doctor before use if you are pregnant or have a medical condition. If any signs of irritation occur, discontinue use and consult your doctor. Do not swallow. Avoid contact with eyes.

DIRECTIONS
For Foot Soaks: Dissolve 1 ½ tablespoon (1 ounce) of Eucalyptus Epsom Salt in a foot tub of 1 gallon of warm water. Soak for 20 minutes for the relaxation of your feet.
For Foot Detox Session: Please use clean filtered water. Never use well or spring water. Please use 1-2 wooden teaspoon provided (2 grams) of Eucalyptus Epsom Salt in a foot tub of 2 gallons of warm water for the best ionization inside the water.

These statements have not been evaluated by the FDA and are not intended to diagnose, treat, cure, or prevent any disease or health condition. Statements regarding dietary supplements have not been evaluated by the FDA and are not intended to diagnose, treat, cure, or prevent any disease or health condition.

INGREDIENTS
Magnesium Sulfate,
Eucalyptus Essential Oil

CELL SPA™ Mega Distribution Int'l Inc.
Paramount CA 90723
For Product Information
1-877-986-5839 www.cell-spa.com

7 46241 33740 5

Detailed instructions and warnings for the Eucalyptus Foot Soak.

- **For Foot Soaks:** Dissolve 1 ½ tablespoon (1 ounce) of Eucalyptus Epsom Salt in a foot tub of 1 gallon of warm water. Soak for 20 minutes for relaxation of your feet.
- **For Foot Detox Session:** Please use clean filtered water. Never use well or spring water. Place 1-2 wooden teaspoon (2 grams) of Eucalyptus Epsom Salt in a foot tub of 2 gallons of warm water for optimal ionization inside the water.

6. MAINTENANCE

- **Cleaning the Unit:** Wipe the main unit with a soft, damp cloth. Do not immerse the unit in water or use abrasive cleaners.
- **Cleaning the Array:** After each use, clean the black cylinder array thoroughly with water and a brush to remove any residue. Ensure it is dry before storage.
- **Storage:** Store the unit and its components in the aluminum carrying case in a cool, dry place when not in use.
- **Array Lifespan:** The arrays have a limited lifespan and will need to be replaced over time depending on usage.

7. TROUBLESHOOTING

If you encounter issues with your Cell Spa unit, please consider the following:

- **Unit Not Turning On:** Ensure the power cord is securely plugged into both the unit and a working electrical outlet.
- **No Amperage Reading / Low Amperage:** Check that the array and wrist wrap are properly connected. Ensure the array is fully submerged in water. If the reading is below 0.5, add a small pinch of salt to the water (refer to Section 5.2).
- **Water Not Changing Color:** Water discoloration is a natural part of the process, but its intensity can vary based on water quality and individual factors. Ensure the array is clean and functioning.
- **Unusual Odor or Noise:** Discontinue use immediately and contact customer support.

For further assistance, please refer to the Warranty and Support section.

8. SPECIFICATIONS

| | |
|-----------------------------|---|
| Product Name | Cell Spa Digital LCD Display Detox Ion Ionic Aqua Foot Bath Spa |
| Model Number | B08JK3LFDX |
| Brand | Cell Spa |
| Date First Available | September 19, 2020 |
| UPC | 0746241337405 (for Eucalyptus Salt) |

9. WARRANTY AND SUPPORT

This unit comes with a **1-year warranty** directly from Cell Spa.

For product information or support, please contact:

Phone: [1-877-986-5839](tel:1-877-986-5839)

Website: www.cell-spa.com

Manufacturer: Mega Distribution Int'l Inc., Paramount CA 90723