

## Manuals+

[Q & A](#) | [Deep Search](#) | [Upload](#)

manuals.plus /

- › [LaView](#) /
- › [LaView Home Security Camera User Manual](#)

### LaView LV-PWF1B-4PKG

# LaView Home Security Camera User Manual

Model: LV-PWF1B-4PKG

## PRODUCT OVERVIEW

The LaView Home Security Camera system provides comprehensive indoor surveillance with 1080P HD video, motion detection, two-way audio, and night vision capabilities. Designed for ease of use, these cameras connect via Wi-Fi and can be monitored through the LaView mobile application or web browser, offering continuous live streams and smart alerts.



Image: Four LaView Home Security Cameras, black in color, designed for indoor use.

## Key Features:

- **24/7 Live Streaming:** Access live feeds via the LaView app or web browser, supporting up to 9 simultaneous views.
- **1080P HD & Night Vision:** Clear 2.1MP video with advanced IR night vision up to 33 ft. Compatible with 2.4GHz Wi-Fi.
- **Motion Detection & Two-Way Audio:** Receive instant smart alerts and communicate through the

camera with noise cancellation.

- **Flexible Placement & Sharing:** Suitable for various indoor locations (living room, kitchen, office). Share access with up to 20 users.
- **Cloud & Micro-SD Storage:** Includes a 30-day free trial for US cloud storage (AWS server) and supports microSD cards up to 128GB.

## WHAT'S IN THE BOX

- Camera Body (4 units)
- Power Adapter (4 units)
- Quick Start Guide

## SETUP GUIDE

### 1. App Installation and Registration

Download the "LaView" app from your mobile device's app store (iOS or Android). Register for a new account or log in if you already have one.

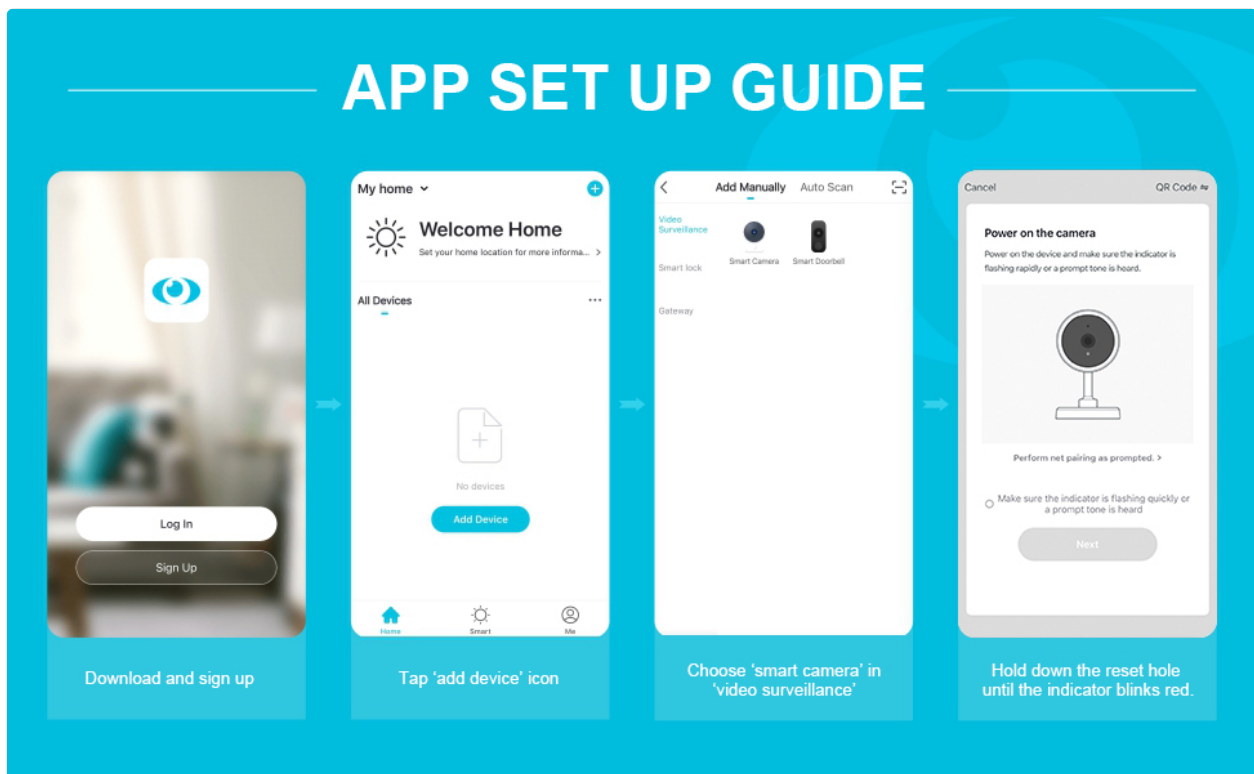


Image: Step-by-step guide for initial app setup, including downloading the app, logging in, tapping 'Add Device', and selecting 'Smart Camera' under 'Video Surveillance'.

1. Download the "LaView" App and register an account.
2. Plug in the power adapter to the camera.

3. Tap the 'Add Device' icon in the app.
4. Choose 'Smart Camera' under 'Video Surveillance'.
5. Ensure the camera's indicator is flashing rapidly or a prompt tone is heard. If not, hold down the reset hole until the indicator blinks.

## 2. Connecting to Wi-Fi

The camera supports 2.4GHz Wi-Fi networks. Ensure your mobile device is connected to a 2.4GHz network during setup.

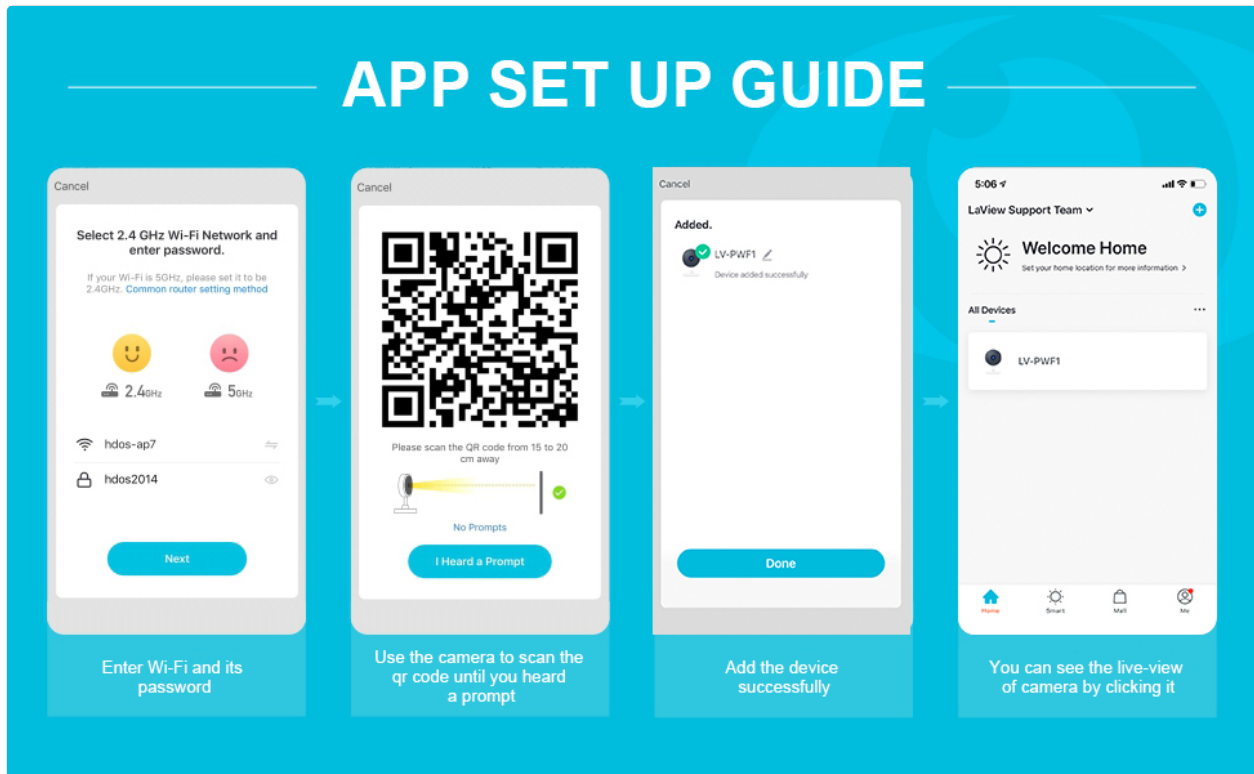


Image: Continuation of app setup, showing steps for entering Wi-Fi credentials, scanning a QR code with the camera, and successful device addition.

6. Enter your 2.4GHz Wi-Fi network name and password in the app.
7. Use the camera to scan the QR code displayed on your phone screen. Hold the phone 15-20 cm away from the camera lens until you hear a prompt.
8. Once the device is added successfully, you can view the live stream.

For advanced Wi-Fi settings, refer to your router's common router setting method if you encounter issues with 5GHz networks.

## 3. Web Access Guide

You can also access your camera's live feed and settings through a web browser.

# WEB ACCESS GUIDE

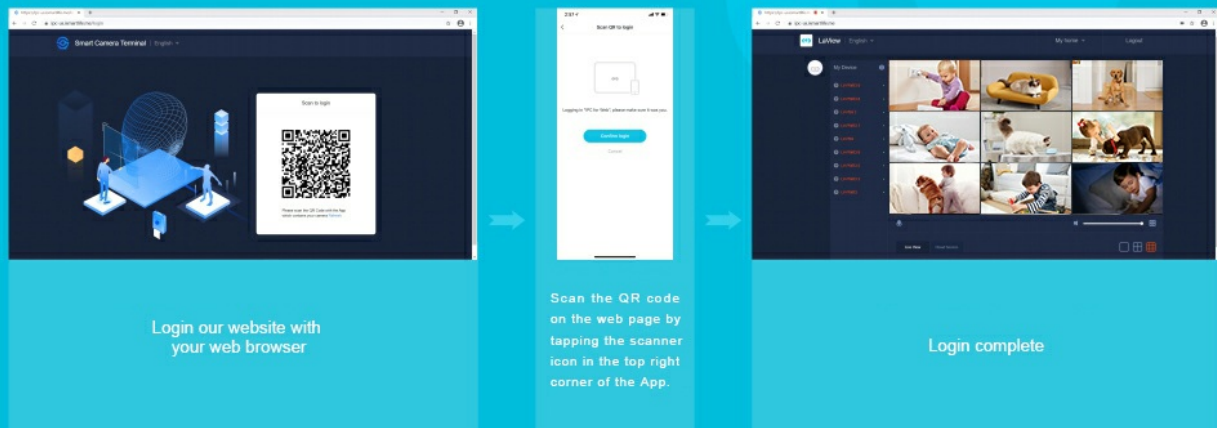


Image: Instructions for accessing camera feeds via a web browser, including logging into the website, scanning a QR code with the app, and viewing multiple cameras.

1. Open your web browser and navigate to the LaView web portal.
2. Scan the QR code displayed on the web page using the scanner icon in the top right corner of the LaView mobile app.
3. Login will complete, and you can view your cameras.

## OPERATING INSTRUCTIONS

### Live View and Multi-Camera Monitoring

The LaView app and web interface allow you to view live streams from your cameras. You can connect and view up to 9 cameras simultaneously.

# LAVIEW HOME SECURITY CAMERA

Connect and view up to 9 cameras simultaneously

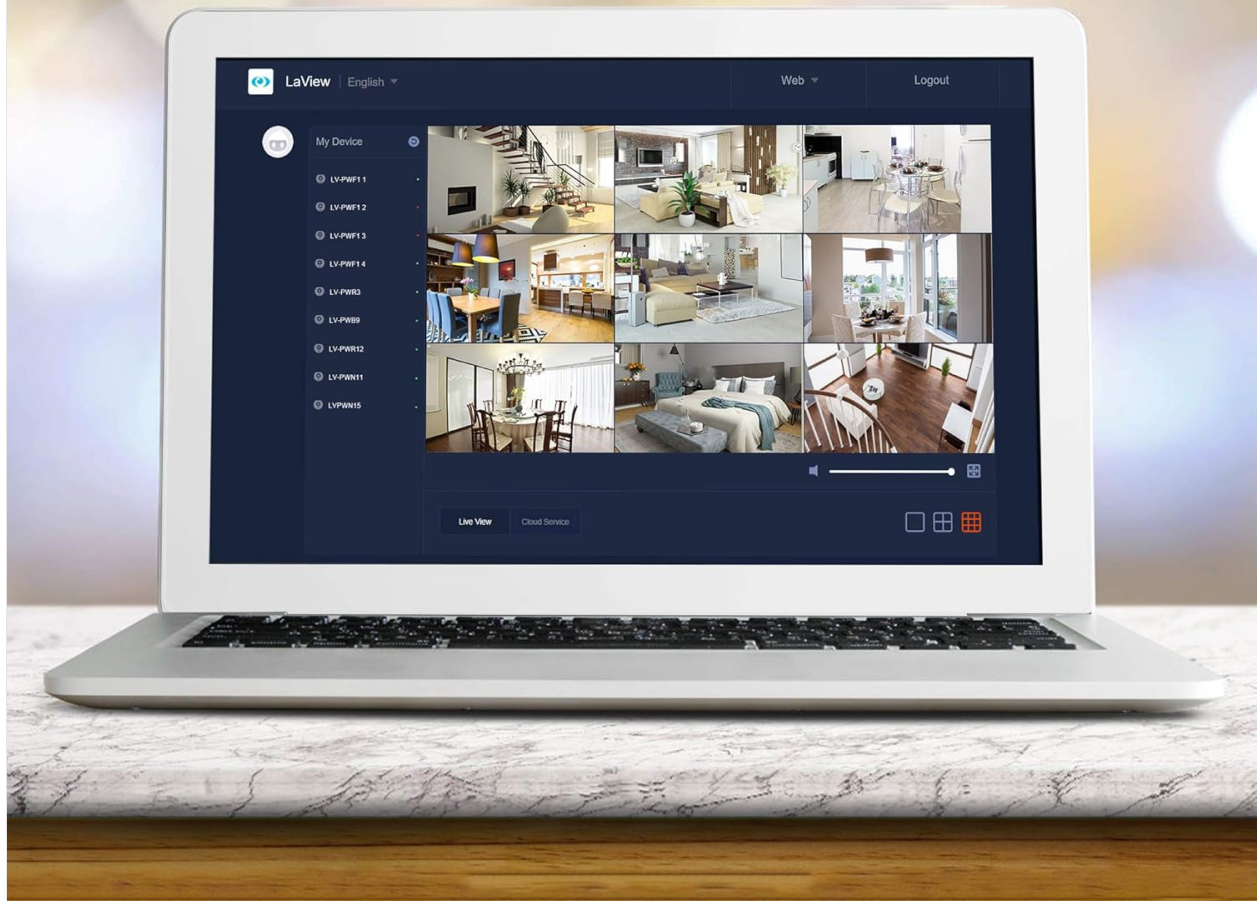


Image: A laptop screen showing a grid of nine live video feeds from various LaView home security cameras, demonstrating multi-camera viewing capability.

## Motion Detection and Alerts

The cameras are equipped with advanced motion detection. When motion is detected, you will receive real-time alert notifications on your smartphone.



# ADVANCED MOTION DETECTION

Real-time alert notification from smartphone



Image: A composite image illustrating the camera's advanced motion detection feature, showing a baby, a cat, and a person in a hoodie, with red boxes indicating detected motion.

## Two-Way Audio

Utilize the built-in microphone and speaker for clear two-way communication. This feature allows you to speak to individuals near the camera and hear their responses.



Image: A young girl wearing headphones, looking at a tablet, with a LaView camera on the table. Speech bubbles indicate two-way audio communication: "Mom, I'm looking at the course." and "Lisa, what are you doing?".

## Night Vision

The cameras are equipped with advanced infrared (IR) night vision, providing clear visibility up to 33 feet even in complete darkness.

# 1080P HD & Night Vision

LaView is able to keep your child safe 24/7



Image: A split image demonstrating the camera's 1080P HD and night vision capabilities. The left side shows a child playing in daylight, and the right side shows a child sleeping in a grayscale night vision view.

## Storage Options

Recordings can be stored locally on a microSD card (up to 128GB, not included) or via the optional cloud storage service. The cloud storage utilizes AWS servers in the US for data encryption and security.





**Privacy protection**  
**USA Cloud Server**

All data is being stored in the top safety  
US database system.

Micro SD cards not included

Image: Two LaView cameras on a wooden table with cloud and microSD card icons floating above, set against a backdrop of the US flag. Text highlights "Privacy protection" and "USA Cloud Server," stating that "All data is being stored in the top safety US database system."

### Integration with Alexa

The cameras are compatible with Amazon Alexa, allowing for voice control and integration into your smart home system.



Image: A woman working at a desk with a laptop and tablet. A speech bubble indicates "Alexa show me the baby room," demonstrating compatibility with Amazon Alexa for viewing camera feeds.

## MAINTENANCE

- **Cleaning:** Use a soft, dry cloth to clean the camera lens and body. Avoid abrasive cleaners or solvents.
- **Firmware Updates:** Regularly check the LaView app for available firmware updates to ensure optimal performance and security.
- **Power Supply:** Ensure the camera is connected to a stable power source. Use only the provided power adapter.
- **MicroSD Card Management:** If using a microSD card, periodically review and back up important recordings. Format the card within the app if performance issues arise.

## TROUBLESHOOTING

Problem	Possible Cause	Solution
Camera offline/Cannot connect	Incorrect Wi-Fi password Weak Wi-Fi signal Camera too far from router Router settings (e.g., 5GHz network)	Verify Wi-Fi password. Move camera closer to the router or use a Wi-Fi extender. Ensure your router is broadcasting a 2.4GHz network. Restart the camera and router. Reset the camera and re-add it to the app.
Poor video quality	Insufficient network bandwidth Dirty camera lens Low light conditions	Ensure stable internet connection. Clean the camera lens with a soft cloth. Verify night vision is enabled in low light.
Motion alerts not received	Motion detection disabled App notification settings Incorrect detection sensitivity	Enable motion detection in the app settings. Check your phone's notification settings for the LaView app. Adjust motion detection sensitivity.
Two-way audio issues	Microphone/speaker muted in app Network latency	Ensure audio is enabled in the app. Check your internet connection speed.

## SPECIFICATIONS

Feature	Detail
Model Name	LV-PWF1B-4PKG
Indoor/Outdoor Usage	Indoor
Video Capture Resolution	1080p
Connectivity Protocol	Wi-Fi (2.4GHz only)
Power Source	Corded Electric (5 Volts, 2.5 watts)
Controller Type	Android, iOS, Amazon Alexa
Mounting Type	Wall Mount (flexible base)
Night Vision Range	33 Feet
Special Feature	2-Way Audio, Motion Detection
Item Weight	1.81 pounds (for the 4-pack)

Feature	Detail
UPC	192728011731

## WARRANTY AND SUPPORT

For warranty information and technical support, please visit the official LaView website or contact their customer service. Details are typically provided in the Quick Start Guide included with your product. You can also visit the [LaView Store on Amazon](#) for more product information and support resources.