

Mega Brands GWP97

Mega Bloks Safari Animals Instruction Manual

Model: GWP97

INTRODUCTION

Welcome to the world of Mega Bloks Safari Animals! This instruction manual provides essential information for the safe and enjoyable use of your new building set. Designed for young builders, this set allows children to construct friendly safari animals using large, easy-to-handle blocks. Please read this manual thoroughly before use and retain it for future reference.

SAFETY INFORMATION

- **Age Recommendation:** This product is suitable for children aged 12 months and up.
- **Supervision:** Adult supervision is recommended during play, especially for younger children.
- **Cleaning:** Clean blocks with a damp cloth and mild soap. Do not immerse in water or use harsh chemicals.
- **Inspection:** Regularly inspect blocks for any damage or wear. Discontinue use if any parts are broken or show signs of deterioration.
- **Storage:** Store blocks in a clean, dry place away from direct sunlight and extreme temperatures.

PACKAGE CONTENTS

Your Mega Bloks Safari Animals set includes 14 large building blocks designed to create five distinct safari animals.

- Blocks for 1 Giraffe
- Blocks for 1 Elephant
- Blocks for 1 Tiger
- Blocks for 1 Zebra
- Blocks for 1 Bird
- Total of 14 Mega Bloks pieces



Image: The Mega Bloks Safari Animals set, showing the packaging and the five completed animal figures.

SETUP

Setting up your Mega Bloks Safari Animals for play is simple and quick.

1. **Unpack:** Carefully remove all blocks and packaging materials from the box.
2. **Dispose of Packaging:** Discard all plastic bags and other packaging materials responsibly and keep them away from children to prevent suffocation hazards.
3. **Inspect:** Before first use, inspect all blocks to ensure they are clean and free from any defects or damage.
4. **Prepare Play Area:** Choose a clean, flat surface for play, such as a table or floor, to allow for easy assembly and imaginative play.

OPERATING AND ASSEMBLY INSTRUCTIONS

The Mega Bloks Safari Animals set is designed for intuitive assembly, encouraging creativity and fine motor skill development. The blocks are large and easy for small hands to grasp and connect.

General Assembly Steps:

1. **Identify Pieces:** Sort the blocks by color or shape to identify the parts for each animal. Each animal typically consists of a few distinct blocks that fit together.
2. **Connect Blocks:** Align the studs on one block with the holes on another. Gently press the blocks together until they click securely into place.
3. **Build Animals:** Follow the visual cues on the blocks (e.g., animal faces, patterns) to assemble the giraffe, elephant, tiger, zebra, and bird. For example, the tiger's head block connects to its body block.
4. **Experiment:** Encourage children to mix and match blocks to create their own unique safari creatures, fostering imaginative play.

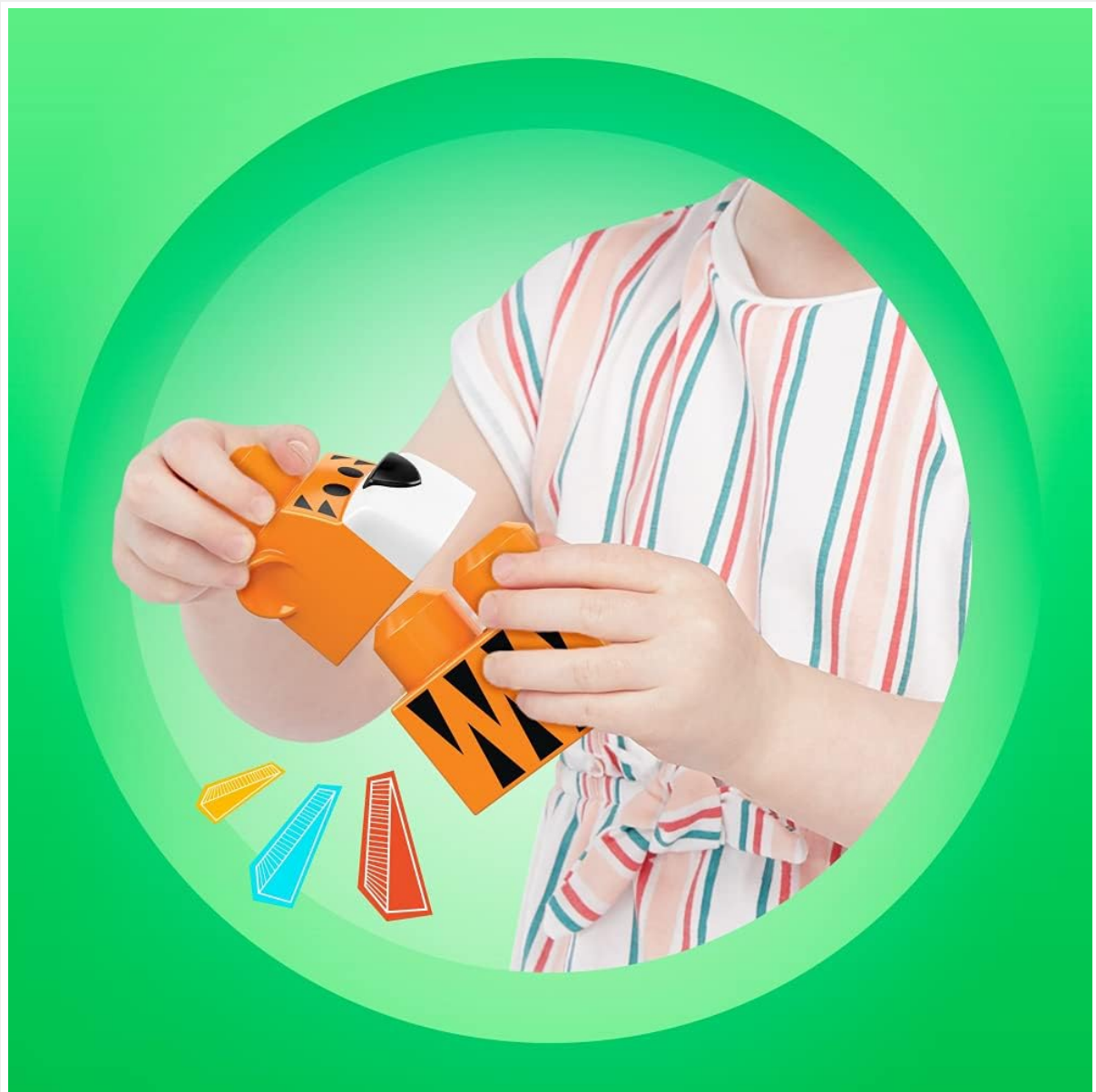


Image: A child demonstrating the connection of two Mega Bloks pieces to form part of an animal.



Image: Children engaging in play with the assembled Mega Bloks Safari Animals.

MAINTENANCE AND CARE

Proper care will ensure the longevity and hygiene of your Mega Bloks Safari Animals set.

- **Cleaning:** To clean the blocks, wipe them with a damp cloth using mild soap and water. Rinse thoroughly with a clean damp cloth to remove any soap residue. Allow blocks to air dry completely before storing.
- **Do Not Submerge:** Do not submerge the blocks in water, especially if they have stickers or painted details, as this may cause damage.
- **Avoid Harsh Chemicals:** Do not use abrasive cleaners, solvents, or harsh chemicals, as these can damage the plastic and colors.
- **Storage:** Store the blocks in their original packaging or a designated toy bin in a cool, dry place, away from direct sunlight and extreme temperatures. This helps prevent discoloration and warping.

TROUBLESHOOTING

While Mega Bloks are designed for durability and ease of use, here are some common issues and their solutions.

Problem	Solution
Blocks do not connect easily.	Ensure the studs and holes are properly aligned. Apply gentle, even pressure. If blocks are new, they may require a few uses to loosen slightly.
A block appears damaged or broken.	Discontinue use of the damaged block immediately. Contact customer support for assistance. Do not attempt to repair broken blocks.
Missing pieces.	Carefully check all packaging materials and the play area. If a piece is genuinely missing from a new set, contact customer support with your product details.

SPECIFICATIONS

Feature	Detail
Product Name	Mega Bloks Safari Animals
Model Number	GWP97
Manufacturer	Mattel
Recommended Age	12 months and up
Product Dimensions (L x W x H)	5 x 7.01 x 10.51 inches
Item Weight	12.3 ounces
Number of Pieces	14


WARRANTY AND SUPPORT

For information regarding warranty, product support, or to inquire about replacement parts, please contact the manufacturer directly.

Manufacturer: Mattel

Please refer to the official Mattel website or product packaging for the most current contact information and support resources.

Related Documents

	<p>MEGA Hot Wheels HW V8 Bomber Monster Truck Building Instructions</p> <p>Step-by-step building instructions for the MEGA Hot Wheels HW V8 Bomber Monster Truck construction set (HHD17). Includes assembly guidance, part identification, and safety information.</p>
---	---

