

## Matchbox GY87

# Matchbox Action Drivers Fire Station Rescue Playset Instruction Manual

Model: GY87

## 1. INTRODUCTION

The Matchbox Action Drivers Fire Station Rescue Playset offers an interactive experience for children aged 3 and up. This playset features realistic details, lights, and sounds, allowing for engaging rescue scenarios. It includes a fire station with double garage doors, a training tower with a pop-up fire, and a 1:64 scale fire truck. The playset is designed to connect with other Matchbox and Hot Wheels City sets for expanded play.



Image 1.1: The Matchbox Action Drivers Fire Station Rescue Playset, shown both in its packaging and fully assembled with the included fire truck.

## 2. IMPORTANT SAFETY INFORMATION

- **Adult Supervision Recommended:** Always supervise children during play to ensure safe use.
- **Small Parts Warning:** This product contains small parts which may pose a choking hazard for children under 3 years of age.
- **Battery Safety:** The playset requires 3 LR44 button cell batteries (included). Ensure batteries are inserted correctly. Do not mix old and new batteries, or different types of batteries. Remove exhausted batteries promptly. Dispose of batteries responsibly.
- **Avoid Water:** Keep the electronic components of the playset away from water to prevent damage.
- **Flashing Lights/Sounds:** This toy produces flashing lights and sounds. Discontinue use if it causes discomfort or adverse reactions in sensitive individuals.

## 3. PACKAGE CONTENTS

Verify that all components are present before assembly:

- Fire Station Playset Base
- Fire Station Building with Double Garage Doors
- Training Tower with Pop-Up Fire Mechanism
- 1 x Matchbox 1:64 Scale Fire Truck (Blaze Blitzer)
- Road Track Sections
- Various Accessories (e.g., traffic light, gates, refueling pumps)
- 3 x LR44 Batteries (pre-installed or included separately)
- Instruction Sheet

## 4. SETUP AND ASSEMBLY

Adult assembly is required. Follow these steps to set up your Fire Station Rescue Playset:

1. **Unpack Components:** Carefully remove all parts from the packaging.
2. **Assemble Base:** Connect the road track sections to the main fire station base. Ensure all connection points are securely fastened. The track sections are designed to interlock.
3. **Attach Buildings:** Securely attach the Fire Station building and the Training Tower to their designated spots on the base.
4. **Install Accessories:** Place the traffic light, gates, and refueling pumps in their respective slots on the playset.
5. **Battery Installation:** If batteries are not pre-installed, locate the battery compartment (usually on the underside of the main fire station building) and insert 3 LR44 batteries, observing polarity.



Image 4.1: A child interacting with the assembled Fire Station Playset, demonstrating how it can connect with other Matchbox Action Drivers sets to create a larger city environment.

**Connecting to Other Playsets:** The Fire Station Rescue Playset features track connection points on all four sides, allowing it to be combined with other Matchbox Action Drivers playsets or Hot Wheels City sets (sold separately) to expand your play world.



## 5. OPERATING INSTRUCTIONS

Experience the interactive features of your Fire Station Rescue Playset:

### 1. Activating Lights and Sounds:

- Press the button on top of the main fire station building to activate emergency lights and sounds.
- Drive the fire truck through the garage doors. The doors will automatically open, triggering lights and various announcements (e.g., "Assistance needed! Deploy Engine 1 and Engine 2!").

Your browser does not support the video tag.

Video 5.1: Demonstration of the Matchbox Action Drivers Fire Station Rescue Playset's interactive features, including lights, sounds, and moving parts.

### 2. Fire Training Tower:

- Place a vehicle (like the included fire truck) on the top platform of the Training Tower. The pretend fire will pop up.
- Drive the fire truck through the Training Tower's garage door. As the truck passes through, the fire will retract, simulating extinguishing the blaze.



Image 5.1: Close-up of the Training Tower showing the pop-up fire mechanism. Driving a vehicle through the tower

will make the fire retract.

### 3. Interactive Gates:

- The playset features car-activated gates. Drive a vehicle towards a gate, and it will open to allow passage.
- There are also manually moveable gates that can be operated by hand to control vehicle flow.

## Car-activated gate!



Image 5.2: A fire truck activating a gate on the playset, demonstrating the interactive gate feature.

### 4. Refueling Area:

- Utilize the designated refueling pumps for pretend gas and water refills for your fire truck.

## 6. MAINTENANCE AND CARE

- **Cleaning:** Wipe the playset and vehicles with a soft, damp cloth. Do not immerse electronic parts in water.
- **Storage:** Store the playset in a dry, cool place away from direct sunlight when not in use.
- **Battery Replacement:** When lights dim or sounds become faint, replace the LR44 batteries. Refer to the battery installation steps in Section 4.

## 7. TROUBLESHOOTING

Issue	Possible Cause	Solution
Lights/Sounds not working	Dead or incorrectly installed batteries.	Replace batteries with new LR44 batteries, ensuring correct polarity.

Issue	Possible Cause	Solution
Garage doors not opening	Vehicle not positioned correctly on the trigger point.	Ensure the vehicle's wheels are directly over the trigger mechanism in front of the doors.
Training Tower fire not retracting	Vehicle not driven completely through the tower.	Push the vehicle fully through the tower's garage door to activate the retraction mechanism.
Playset sections not connecting	Misalignment of connection points.	Ensure all tabs and slots are correctly aligned before pressing sections together.

## 8. SPECIFICATIONS

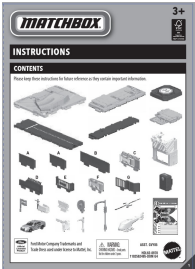

- **Model Number:** GVY87
- **Brand:** Matchbox
- **Product Dimensions:** 13.75 x 13.75 x 7.24 inches
- **Item Weight:** 2 pounds
- **Recommended Age:** 3 years and up
- **Batteries:** 3 x LR44 (included)
- **Manufacturer:** Mattel

## 9. WARRANTY AND SUPPORT

For warranty information or customer support, please refer to the contact details provided on the product packaging or visit the official Matchbox website. Keep your purchase receipt as proof of purchase.

© 2023 Matchbox. All rights reserved. Matchbox and associated trademarks are owned by Mattel.

### Related Documents - GVY87

	<p><a href="#">Matchbox Action Drivers Police Station Playset: Assembly, Play, and Maintenance Guide</a></p> <p>Official instructions and guide for the Matchbox Action Drivers Police Station playset (Model HDL62). Learn how to assemble, play, replace batteries, and connect with other Matchbox and Hot Wheels sets for expanded city play.</p>
	<p><a href="#">Matchbox Action Drivers Construction Crane Truck Instructions</a></p> <p>Detailed instructions for assembling and playing with the Matchbox Action Drivers Construction Crane Truck, including assembly steps, play features, and safety warnings.</p>



### [Matchbox Action Drivers City Play Set Assembly and Play Instructions](#)

Comprehensive guide for assembling and playing with the Matchbox Action Drivers City play set. Includes step-by-step assembly instructions, play features, and connectivity information.



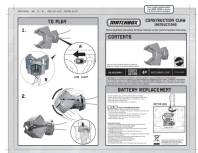
### [Matchbox Airport Adventure Playset HCN34 - Assembly, Features, and Play Guide](#)

Comprehensive guide for the Matchbox Airport Adventure Playset (HCN34), covering assembly instructions, interactive features like plane and car activation, battery replacement, connectivity with other sets, and safety/recycling information. Includes detailed descriptions of visual elements.



### [Matchbox Super Clean Car Wash Playset: Assembly and Play Instructions](#)

Detailed instructions for assembling, playing with, and recycling the Matchbox Super Clean Car Wash playset. Includes battery replacement and connection tips.



### [Matchbox Construction Claw Toy: Instructions & Battery Replacement Guide \(N9761-0920\)](#)

Official instructions for the Matchbox Construction Claw toy (Model N9761-0920). Includes how to play, battery replacement steps, safety warnings, and recycling information.