

TOOLPORT 582723

TOOLPORT 4x4 m Folding Gazebo Instruction Manual

Brand: TOOLPORT | **Model:** 582723

1. INTRODUCTION

This manual provides detailed instructions for the assembly, operation, maintenance, and troubleshooting of your TOOLPORT 4x4 m Folding Gazebo. Designed for quick setup and optimal weather protection, this gazebo features a robust aluminum frame and a high-performance PES 800 polyester canopy. Please read these instructions carefully before setup and retain them for future reference.



Figure 1: Fully assembled TOOLPORT 4x4 m Folding Gazebo.

2. SAFETY INFORMATION

Always prioritize safety during assembly and use. Failure to follow these instructions may result in injury or damage to the product.

- Ensure the gazebo is assembled on a flat, stable surface.
- Always secure the gazebo to the ground using the provided anchoring pegs and guy ropes, especially in windy conditions.
- Do not use the gazebo in extreme weather conditions, such as heavy winds, storms, or heavy snowfall. Disassemble and store the gazebo if severe weather is anticipated.
- Keep all flame and heat sources away from the gazebo fabric. The fabric is not fireproof.
- Supervise children around the gazebo during assembly and use.
- Avoid placing heavy objects on the frame or hanging items from the canopy.
- Regularly inspect all components for wear or damage. Do not use if any parts are compromised.

3. PACKAGE CONTENTS

Verify that all components are present before beginning assembly:

- Folding aluminum frame with accordion mechanism
- High-performance PES 800 polyester roof canopy
- Side walls (if included with your specific model)
- Anchoring pegs
- Guy ropes (optional, depending on model)
- Transport carry bag
- Instruction manual

4. SETUP INSTRUCTIONS

The TOOLPORT folding gazebo is designed for quick and easy assembly by one or two people without the need for tools.

4.1 Unpacking and Initial Setup

1. Remove the folded gazebo frame and canopy from the transport bag.
2. Place the folded frame in the desired location.
3. With a person on each side, gently pull the outer legs apart to partially open the accordion frame.

The logo for TOOLPORT, with 'TOOL' in orange and 'PORT' in black, featuring a stylized orange circle in the 'O' of 'PORT'.

Figure 2: Visual guide for the four-step assembly process.

4.2 Attaching the Canopy

4. Drape the roof canopy over the partially opened frame. Ensure the canopy is correctly oriented with the peak centered.
5. Secure the canopy corners to the frame corners using the integrated fasteners (e.g., Velcro straps or clips).

6. Ensure the canopy is taut and evenly distributed over the frame.

4.3 Extending the Frame and Legs

7. Continue to pull the outer legs apart until the frame is fully extended and the central locking mechanism clicks into place.
8. Extend each leg to the desired height. Press the quick-release button or pull the ring on each leg to adjust the height, then ensure it locks securely into one of the 5 available positions.



Figure 3: Detail of the robust frame joint.





Figure 4: Height adjustment ring on a gazebo leg.

4.4 Securing the Gazebo

9. Use the provided anchoring pegs to secure each leg's base plate to the ground.

10. If using guy ropes (recommended for added stability), attach them to the canopy corners and stake them firmly into the ground at an appropriate angle.

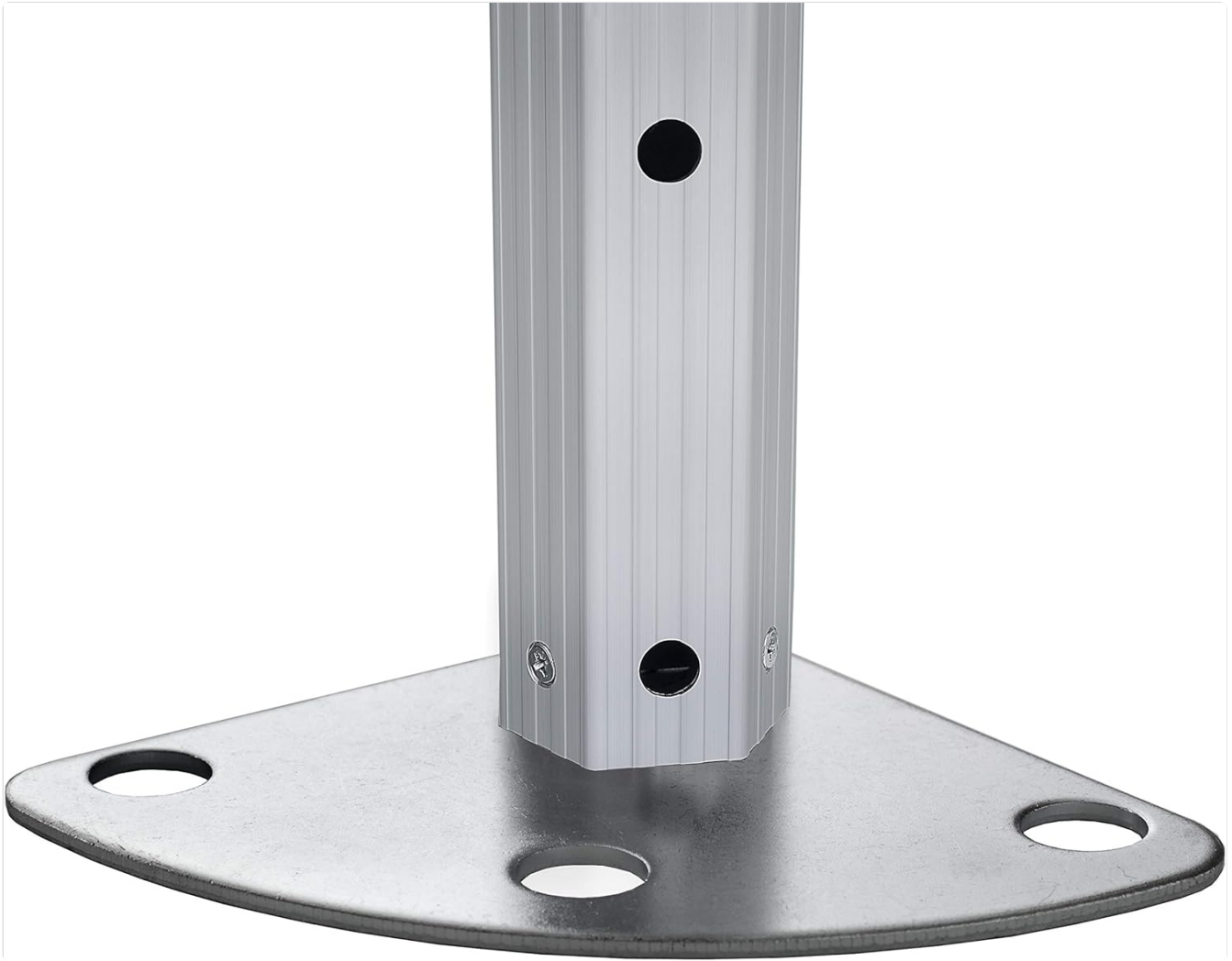


Figure 5: Base plate for ground anchoring.

5. OPERATING INSTRUCTIONS

5.1 Height Adjustment

The gazebo features 5 height adjustment positions. To adjust, press the quick-release button or pull the ring on each leg, slide the inner leg to the desired height, and ensure it locks securely into place before releasing. Adjust all four legs evenly.

5.2 Disassembly and Storage

1. Remove all anchoring pegs and guy ropes.
2. Lower the legs to their lowest position by pressing the quick-release buttons/rings.
3. Release the central locking mechanism of the frame.
4. Carefully remove the canopy from the frame.
5. Fold the frame by pushing the outer legs inwards until it is fully collapsed.
6. Fold the canopy neatly.
7. Place all components into the transport carry bag for storage.



Figure 6: Transporting the folded gazebo in its carry bag.

6. MAINTENANCE

6.1 Cleaning the Canopy

The PES 800 polyester canopy is 100% waterproof and UV resistant. To clean, use a soft brush or cloth with mild soap and water. Rinse thoroughly with clean water and allow to air dry completely before folding and storing. Do not use harsh chemicals or abrasive cleaners.



Figure 7: Waterproof PES 800 polyester canopy material.

6.2 Frame Care

The aluminum frame is corrosion-resistant. Wipe down the frame with a damp cloth to remove dirt and debris. Ensure all moving parts are free of obstructions. Periodically check all screws and connections for tightness.

6.3 Storage

Store the gazebo in its transport bag in a dry, cool place, away from direct sunlight and extreme temperatures. Ensure the canopy is completely dry before storage to prevent mold and mildew.

7. TROUBLESHOOTING

- **Difficulty unfolding/folding the frame:** Ensure all locking mechanisms are disengaged. Check for any obstructions or bent parts. Apply a silicone-based lubricant to moving joints if necessary.
- **Canopy not fitting correctly:** Ensure the canopy is oriented correctly and evenly distributed over the frame before fully extending the legs.

- **Water pooling on the canopy:** Ensure the canopy is taut and the legs are extended to their maximum height. Water pooling can occur in heavy rain if the canopy sags.
- **Gazebo unstable:** Verify that all legs are fully extended and locked, and that the base plates are securely anchored with pegs. Use guy ropes for additional stability, especially in breezy conditions.

8. SPECIFICATIONS

Feature	Detail
Model Number	582723
Dimensions (L x W x H)	400 x 400 x 230-370 cm (adjustable height)
Weight	57 kg
Frame Material	Aluminum (6063-T5, hexagonal profile 40mm)
Canopy Material	PES 800 High-Performance Polyester
Water Resistance	100% Waterproof (heat-sealed seams)
UV Protection	Yes (UV 50+)
Color	Dark Grey
Recommended Use	Folding gazebo, party tent
Country of Origin	Germany



Figure 8: Gazebo dimensions including adjustable height (2.00-2.30 m clearance, 3.40-3.70 m total height).

9. WARRANTY AND SUPPORT

For warranty information or technical support, please contact TOOLPORT customer service through their official website or the retailer where the product was purchased.

Please note that information regarding the availability of spare parts is currently not provided. For any specific part inquiries, please reach out to customer support.

You can visit the TOOLPORT brand store for more products and information: [TOOLPORT Brand Store](#)