

## WiMiUS H8

# WiMiUS H8 WiFi Trail Camera

## INSTRUCTION MANUAL

### 1. Introduction

---

The WiMiUS H8 WiFi Trail Camera is designed for wildlife monitoring, hunting, home security, and farm surveillance. It features 24MP image capture, 1296P HD video recording, night vision capabilities, and WiFi connectivity for app control. This manual provides detailed instructions for setting up, operating, and maintaining your camera.

### 2. Package Contents

---

Verify that all items listed below are included in your package:

- Trail Camera x1
- Video Cable x1
- USB Cable x1
- Metal Bracket x1
- Mounting Belt x1
- Remote Control x1
- Long Screw of Metal Bracket & Plastic Expansion Tube x3
- Instruction Manual x1



Trail Camera\*1



video cable\*1



USB cable\*1



Metal bracket \*1



Mounting belt\*1



Remote control\*1



Long screw of metal bracket  
& Plastic expansion tube\*3



Instruction  
manual\*1

## MANY ACCESSORIES

Image: Contents of the WiMiUS H8 Trail Camera package, including the camera, cables, mounting accessories, remote control, and manual.

### 3. Product Overview

Familiarize yourself with the camera's components and controls:



Image: Detailed diagram illustrating the various parts and controls of the WiMiUS H8 Trail Camera.

1. **MODE Key:** Used to switch between different operating modes.
2. **OFF/SETUP/ON Switch:** Power switch with Off, Setup, and On positions.
3. **UP Key:** Navigation button for menu selection.
4. **OK/SHOT Key:** Confirms selections or manually triggers a photo/video.
5. **Down Key:** Navigation button for menu selection.
6. **Battery Box Button:** Releases the battery compartment.
7. **LCD Screen:** Displays menu, settings, and playback.
8. **Speaker:** For audio playback.
9. **SD Card Slot:** Insert SD/SDHC card here.
10. **DC Connector:** For external power supply.
11. **AV Connector:** For connecting to a TV.
12. **USB Port:** For connecting to a computer.

## 4. Setup



## 4.1 Battery Installation

The camera requires 8 AA batteries (not included). Open the battery compartment by pressing the Battery Box Button (6). Insert the batteries according to the polarity indicators inside the compartment. Ensure the compartment is securely closed after installation.

## 4.2 SD Card Installation

A Class 10 SD/SDHC card up to 32GB is recommended (not included). Insert the SD card into the SD Card Slot (9) with the metal contacts facing the back of the camera. Push until it clicks into place. To remove, push the card in again until it springs out.

## 4.3 Mounting the Camera

Use the provided mounting belt or metal bracket to secure the camera. The mounting belt allows attachment to trees or poles. The metal bracket can be used for wall mounting with the included screws and expansion tubes.



Image: The WiMiUS H8 Trail Camera securely mounted to a tree using the provided strap, demonstrating a typical outdoor setup.

## 5. APP Control & WiFi Connection



The WiMiUS H8 features built-in WiFi for remote control via a smartphone app. This allows for adjusting settings and reviewing media directly.

1. Download the 'Hunting Cam Pro' app from your smartphone's app store.
2. Switch the camera to the 'SETUP' position.
3. On your smartphone, connect to the camera's WiFi network. The network name (SSID) and password will be displayed on the camera's LCD screen.
4. Open the 'Hunting Cam Pro' app. You can now adjust camera settings, view live feed, and download photos/videos.



*Image: The WiMiUS H8 Trail Camera positioned next to a smartphone screen showing the 'Hunting Cam Pro' application interface, demonstrating app control functionality.*

## 6. Operating Modes

The camera supports various operating modes to suit different monitoring needs.

- **Photo Mode:** Captures still images. The H8 camera captures 24MP crystal-clear images.



- **Video Mode:** Records video clips. The camera records full HD 1296P videos.
- **Photo + Video Mode:** Captures a still image followed by a video clip.

The camera features a 0.3-second trigger time and 65ft (20m) night vision range with 34pcs 940nm low-glow infrared LEDs, ensuring capture of fast-moving objects and clear footage in low light conditions.

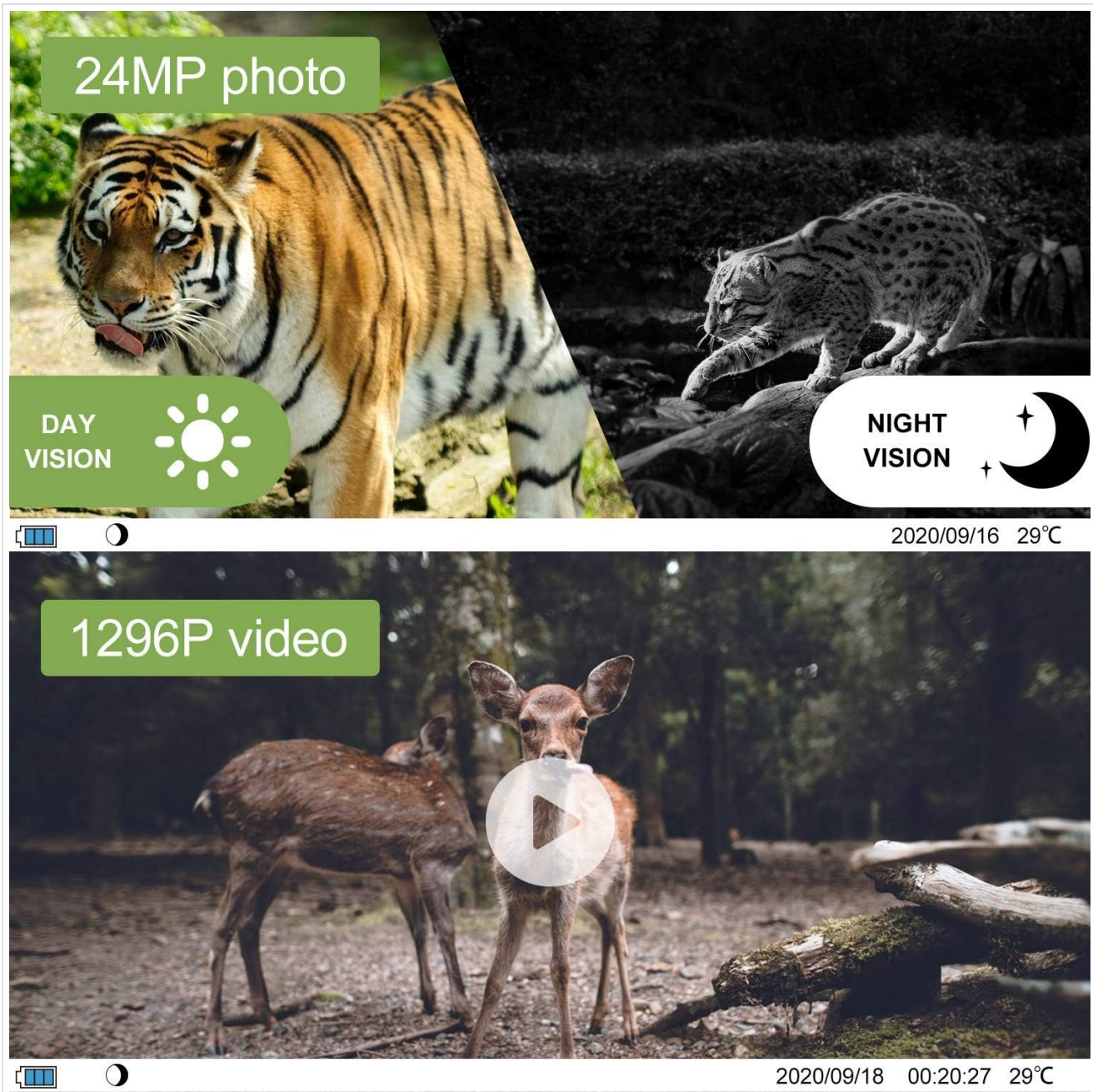


Image: A visual comparison of day vision (color) and night vision (monochrome) capabilities, showcasing a 24MP photo and a 1296P video example from the camera.

## 7. Maintenance

Proper maintenance ensures the longevity and optimal performance of your camera.

- **Cleaning:** Use a soft, dry cloth to clean the camera body. For the lens, use a specialized lens cleaning cloth. Avoid abrasive cleaners or solvents.
- **Waterproof Protection:** The camera has an IP66 waterproof rating, protecting it from rain and dust. Ensure all covers and seals are properly closed before outdoor use.
- **Battery Care:** Remove batteries if the camera will not be used for an extended period to prevent leakage.



- **Storage:** Store the camera in a cool, dry place away from direct sunlight when not in use.



**IP66**  
**Waterproof**

Operating Temperature -20°C to +60°C

*Image: The WiMiUS H8 Trail Camera in a forest setting with simulated rain, emphasizing its IP66 waterproof and dustproof capabilities.*

## 8. Troubleshooting

If you encounter issues with your WiMiUS H8 Trail Camera, refer to the following common problems and solutions:

- **Camera not powering on:** Check battery installation and ensure batteries are fully charged. Verify the OFF/SETUP/ON switch is in the 'SETUP' or 'ON' position.
- **No photos/videos captured:** Ensure an SD card is inserted correctly and has sufficient free space. Check camera settings for proper operating mode and motion detection sensitivity.
- **Poor image/video quality:** Clean the camera lens. Ensure the camera is positioned correctly and not obstructed. Check resolution settings.
- **WiFi connection issues:** Ensure the camera is in 'SETUP' mode. Restart both the camera and your smartphone. Verify you have downloaded the correct 'Hunting Cam Pro' app.
- **Night vision not working:** Ensure the camera is in an environment dark enough to trigger night vision. Check

battery levels.

For further assistance, please contact customer support.

## 9. Specifications

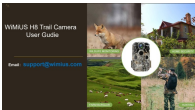
Feature	Specification
Image Resolution	24MP
Video Resolution	1296P HD
Trigger Time	0.3 seconds
Night Vision Range	65 Feet (20m)
Infrared LEDs	34pcs 940nm Low Glow
Viewing Angle	120 Degrees
Connectivity	Wi-Fi, USB, AV
App Control	Yes (Hunting Cam Pro)
Waterproof Rating	IP66
Power Source	8x AA Batteries (not included) / DC 6V
Storage	SD/SDHC Card up to 32GB (Class 10 recommended)
Operating Temperature	-20°C to +60°C
Material	Metal
Item Weight	621 g

## 10. Warranty and Support

WiMiUS offers a 30-day money-back guarantee and a 24-month warranty for the H8 Trail Camera. In case of any defective issues, a new replacement will be provided. Professional customer service is available within 24 hours to assist with any inquiries or problems.

For support, please refer to the contact information provided with your purchase or visit the official WiMiUS website.






### Related Documents - H8



[WiMiUS H8 Trail Camera User Guide and Setup Instructions](#)

Comprehensive user guide for the WiMiUS H8 Trail Camera, covering setup, operation, file viewing, Wi-Fi connectivity, and settings. Learn how to use your trail camera for wildlife monitoring, hunting, and home security.



	<p><a href="#">WIMIUS P60 Projector User Manual</a></p> <p>Comprehensive user manual for the WIMIUS P60 projector, covering setup, operation, features, and troubleshooting. Learn how to connect devices, adjust image settings, and get the most out of your WIMIUS projector.</p>
	<p><a href="#">WIMIUS Q2 Projector User Manual: Setup, Features, and Troubleshooting Guide</a></p> <p>Discover how to set up and use your WIMIUS Q2 projector with this comprehensive user manual. Learn about image adjustments, wireless and wired connections, Bluetooth pairing, and find answers to frequently asked questions for an optimal viewing experience.</p>
	<p><a href="#">WiMiUS K13 Projector User Manual</a></p> <p>User manual for the WiMiUS K13 Projector, covering setup, features, and troubleshooting. Learn how to connect devices, adjust settings, and maintain your projector for optimal performance.</p>
	<p><a href="#">WiMiUS P62 Projector User Manual</a></p> <p>User manual for the WiMiUS P62 Projector, covering setup, operation, connectivity, and troubleshooting.</p>
	<p><a href="#">WIMIUS K8 Projector User Manual</a></p> <p>Comprehensive user manual for the WIMIUS K8 Projector, detailing setup, operation, image adjustments, connectivity, and troubleshooting for an optimal viewing experience.</p>