

## XIAOMI MDZ-34-DA

# Xiaomi Redmi TV Soundbar MDZ-34-DA User Manual

Model: MDZ-34-DA | Brand: XIAOMI

## 1. INTRODUCTION

This manual provides essential information for the safe and efficient operation of your Xiaomi Redmi TV Soundbar, model MDZ-34-DA. Please read this manual thoroughly before using the product and retain it for future reference. The Xiaomi Redmi TV Soundbar MDZ-34-DA is designed to enhance your television audio experience with clear stereo sound and robust bass. It offers versatile connectivity options including Bluetooth 5.0, SPDIF, and AUX, making it compatible with various devices such as TVs, PCs, and DVD players.

## 2. SAFETY INFORMATION

To ensure safe operation and prevent damage, please observe the following safety precautions:

- Do not expose the soundbar to water, moisture, or extreme temperatures.
- Ensure proper ventilation around the unit. Do not block any ventilation openings.
- Use only the power adapter supplied with the device.
- Avoid placing the soundbar near heat sources such as radiators, heat registers, stoves, or other apparatus (including amplifiers) that produce heat.
- Clean the soundbar only with a dry cloth.
- Do not attempt to repair or modify the device yourself. Refer all servicing to qualified service personnel.

## 3. PACKAGE CONTENTS

Verify that all items listed below are included in your package:

- 1 x Xiaomi Redmi TV Soundbar (MDZ-34-DA)
- 1 x SPDIF Cord

- 2 x Screws
- 1 x Expansion Rubber Plug
- 1 x EVA Foam Pad
- 1 x User Manual



Image: Xiaomi Redmi TV Soundbar MDZ-34-DA. This image shows the soundbar from a front-top angle, highlighting its sleek black design and speaker grille.

## 4. PRODUCT FEATURES

The Xiaomi Redmi TV Soundbar offers the following key features:

- **Enhanced Audio:** Delivers clear stereo sound and strong bass for an immersive listening experience.
- **Multiple Connectivity Options:** Supports Bluetooth 5.0 wireless connection, AUX input, and S/PDIF cable connection, ensuring compatibility with various audio sources.
- **Bluetooth Technology:** Allows convenient wireless audio streaming from Bluetooth-enabled devices without additional drivers or cables.
- **Flexible Placement:** Can be placed directly on a flat surface or mounted on a wall using the provided tools, optimizing space and aesthetics.
- **Compact Design:** Features a slim and elegant design that integrates seamlessly into any home environment without occupying excessive space.

## 5. SETUP

### 5.1 Unpacking

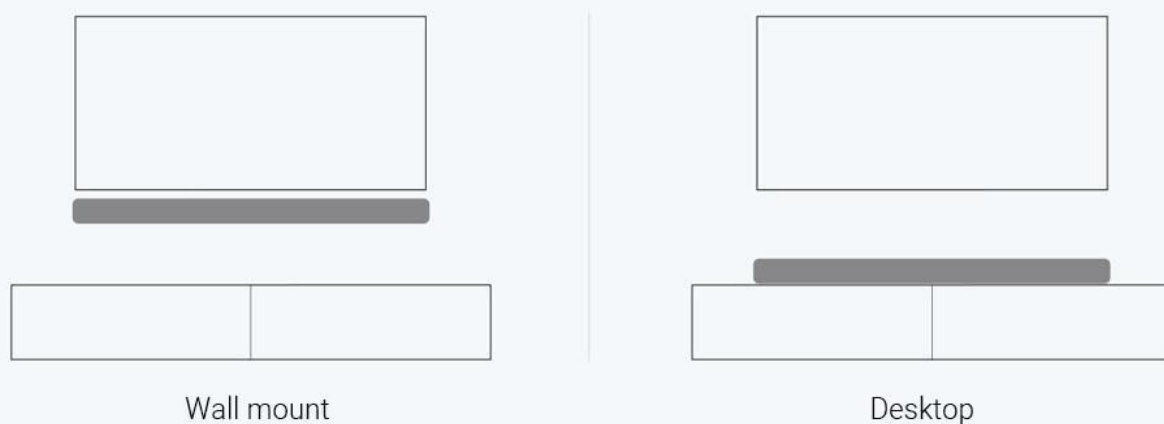
Carefully remove all components from the packaging. Inspect the soundbar and accessories for any signs of damage. Keep the packaging materials for future transport or if servicing is required.

### 5.2 Placement Options

The soundbar can be placed on a flat surface (e.g., TV stand) or wall-mounted.

- **Desktop Placement:** Place the soundbar on a stable, flat surface directly in front of your TV. Ensure there is enough space for proper ventilation.
- **Wall Mounting:** If wall-mounting, refer to the wall-mounting instructions provided in the package. Use the included screws and expansion rubber plugs. Ensure the wall can support the weight of the soundbar.

## DIFFERENT PLACEMENTS



### Wall-mounted size



Determine the A1 point according to the installation height, and then moves 729mm horizontally to the right to confirm the A2 point of the wall hole

Image: Diagram illustrating desktop and wall-mount placement options for the soundbar. The diagram shows the soundbar positioned below a television on a flat surface and mounted on a wall.

### 5.3 Power Connection

Connect the power adapter to the DC IN port on the back of the soundbar, then plug the adapter into a power outlet.

## 6. OPERATING INSTRUCTIONS

### 6.1 Power On/Off

Locate the power switch on the rear panel of the soundbar. Flip the switch to the "ON" position to power on the device. Flip it to "OFF" to power off.

### 6.2 Volume Control

Use the volume buttons on the top panel of the soundbar or the remote control (if included) to adjust the volume. Press '+' to increase volume and '-' to decrease volume.

### 6.3 Input Source Selection

Press the "Input" or "Source" button on the soundbar's top panel or remote control to cycle through available input sources: Bluetooth, SPDIF, and AUX.

## 7. CONNECTIVITY

The soundbar supports multiple connection methods to suit your audio setup.



Image: Diagram showing the soundbar connected to a TV via both wired (SPDIF/AUX) and wireless (Bluetooth 5.0) methods. The image highlights the versatility of connection options.



Image: Close-up view of the rear panel of the Xiaomi Redmi TV Soundbar, showing the power input, SPDIF (coaxial), Line In (RCA), and Aux In ports, along with the power switch.

## 7.1 Bluetooth 5.0 Connection

1. Power on the soundbar.
2. Select Bluetooth mode using the input source button. The Bluetooth indicator light will blink.
3. On your device (e.g., smartphone, TV), enable Bluetooth and search for available devices.
4. Select "Redmi Soundbar" from the list of devices to pair.
5. Once connected, the Bluetooth indicator light will become solid.

## 7.2 SPDIF Connection

1. Connect one end of the SPDIF cable (included) to the SPDIF output port on your TV or audio source.
2. Connect the other end of the SPDIF cable to the SPDIF input port on the back of the soundbar.
3. Select SPDIF mode on the soundbar using the input source button.

## 7.3 AUX Connection

1. Connect one end of a 3.5mm audio cable (not included) to the AUX output port on your TV or audio source.
2. Connect the other end of the 3.5mm audio cable to the AUX input port on the back of the soundbar.
3. Select AUX mode on the soundbar using the input source button.

## 8. MAINTENANCE

### 8.1 Cleaning

Wipe the surface of the soundbar with a soft, dry cloth. Do not use liquid cleaners, aerosols, or abrasive cleaning agents, as these may damage the finish or internal components.

## 8.2 Storage

If storing the soundbar for an extended period, disconnect it from the power supply and store it in a cool, dry place, away from direct sunlight and extreme temperatures.

## 9. TROUBLESHOOTING

If you encounter issues with your soundbar, refer to the following common problems and solutions:

Problem	Possible Cause	Solution
No power	Power cable not connected; Power outlet not working; Power switch off.	Ensure power cable is securely connected. Try a different power outlet. Flip the power switch to ON.
No sound	Incorrect input source selected; Volume too low; Cables not connected properly; TV/device audio output settings.	Select the correct input source. Increase volume. Check all audio cables are securely connected. Adjust audio output settings on your TV/device.
Bluetooth pairing fails	Soundbar not in pairing mode; Device too far; Interference.	Ensure soundbar is in Bluetooth pairing mode (blinking indicator). Move device closer to soundbar. Avoid strong electromagnetic interference.
Distorted sound	Volume too high; Poor cable connection; Audio source issue.	Reduce volume. Check cable connections. Test with a different audio source.

## 10. SPECIFICATIONS

Detailed technical specifications for the Xiaomi Redmi TV Soundbar MDZ-34-DA:



# PRODUCT SIZE



Net weight

Image: Diagram illustrating the dimensions of the soundbar: 780mm length, 63mm height, and 64mm depth, along with its net weight of 1.5kg.

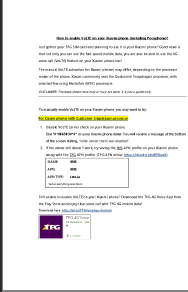
Feature	Detail
Brand	XIAOMI
Model	MDZ-34-DA
Color	Black
Material	ABS, Metal
Power Output	30W
Connectivity	Bluetooth 5.0, SPDIF, AUX
Frequency Range	80Hz - 20000Hz
Impedance	4Ω
Product Dimensions (L x W x H)	78.00 x 6.40 x 6.30 cm
Product Weight	1.50 kg

## 11. WARRANTY AND SUPPORT

This product is covered by a manufacturer's warranty. Please refer to the warranty card included in your package for specific terms and conditions, including the warranty period and coverage details.

For technical support, service, or warranty claims, please contact your local Xiaomi customer service or the retailer from whom you purchased the product. Keep your proof of purchase for warranty validation.

## Related Documents - MDZ-34-DA

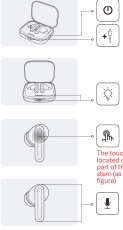
Xiaomi Soundbar 2.0ch Návod na inštaláciu	<a href="#">Xiaomi Soundbar 2.0ch Návod na inštaláciu</a>  Podrobný návod na inštaláciu a nastavenie soundbaru Xiaomi Soundbar 2.0ch, vrátane zoznamu príslušenstva, pokynov na pripojenie, funkcií tlačidiel, montáže na stenu, špecifikácií produktu, dôležitých bezpečnostných upozornení a informácií o záruke.
Xiaomi Soundbar 2.0ch Návod na instalaci	<a href="#">Xiaomi Soundbar 2.0ch MDZ-34-DB: Installation Guide and Specifications</a>  Comprehensive installation guide and technical specifications for the Xiaomi Soundbar 2.0ch (MDZ-34-DB). Learn how to connect, set up, and mount your soundbar for an optimal audio experience.
	<a href="#">How to Enable VoLTE on Xiaomi Phones with TPG SIM</a>  A guide to manually enabling VoLTE (Voice over LTE) on Xiaomi phones using a TPG SIM card, covering both Qualcomm Snapdragon and MediaTek processors. Includes troubleshooting steps and a list of compatible Xiaomi models.



## Redmi Buds 5

### Product overview

Read this manual carefully before use, and retain it for future reference.



The touch area is located on the upper part of the earbud stem (as shown in the figure).

### Package contents



### First time using



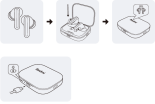
### Take out earbuds



### Wearing



### Charging



### Turning on



### Turning off



### First time connection



### Dual-device connection



### Disconnected



### Automatic connection

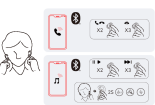


### Restoring factory settings



### Function overview

Once the weather is cold outdoors and your hands become dry, the earbuds may not function when touching them.



### Uygulama ile Bağlanma



1. Telefon foto çekilebilen şekilde cihaza Xiaomi Kulaklık indirmek ve yüklemek QR kodunu taramak.
2. Kulaklık bağlamak için yönlendirmeler izlemekten kaçınarak.



Xiaomi Earbuds uygulamasını indirmek için QR kodunu taramak.  
Not:  
Bağlantı işlemi sırasında telefon akıllı telefonun Bluetooth özelliğini etkinleştirilmediğinden emin olun. Kulaklığın ses kalitesini korumak için, kablo ve sesli iletişiminizi kulaklığın yakınında olduğundan emin olun.

## [Redmi Buds 5 User Manual and Product Overview](#)

A comprehensive guide to the Redmi Buds 5, covering product overview, package contents, first-time use, wearing instructions, charging, turning on/off, connection methods (Bluetooth, dual-device, automatic), factory reset, function overview, and app connection via Xiaomi Earbuds.

	<p><a href="#">Xiaomi Redmi AirDots 2 User Manual: Pairing, Usage, and Troubleshooting</a></p> <p>Comprehensive guide for Xiaomi Redmi AirDots 2, covering pairing with iOS, Android, and Windows devices, wearing instructions, power management, mono mode activation, touch controls, charging, resetting, LED indicators, and common troubleshooting tips.</p>
	<p><a href="#">Xiaomi Sound Party Bluetooth Speaker User Manual</a></p> <p>Comprehensive user manual for the Xiaomi Sound Party Bluetooth speaker, covering power on/off, Bluetooth and TWS pairing, Party Connect, call handling, lighting effects, Bass Boost, NFC pairing, factory reset, energy efficiency, safety information, specifications, and warranty details.</p>

Documents - XIAOMI – MDZ-34-DA

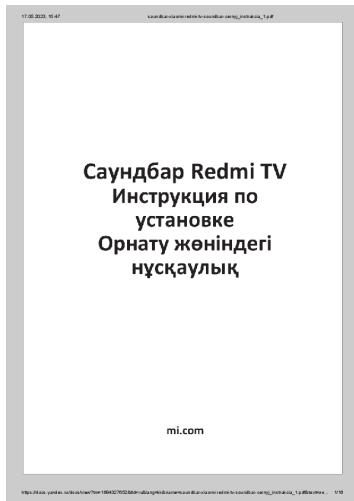


[\[pdf\]](#) Instructions  
Redmi TV саундбарJan 27 2024 · Мысал ретінде Xiaomi алайық S PDFIF кабелін қосуды Мобильді құрылғыда Bluetooth қосыңыз және «Redmi Soundbar»20240127045059 12700495 1domotekhnika ru product instructions 20240127045059 1 |||  
Redmi TV mi.com Redmi . , , , , - . ... dmi TV Soundbar . 4. Bluetooth Bluetooth 1,5 . 5. / 3 , , . : **MDZ-34-DA** . Redmi. : 220 -50 . 0,8 . : 70 20 10 . : 12 2 1 . : 4 . THD 1 ...  
lang:i-klngon **score:29** filesize: 258.11 K page\_count: 8 document date: 2021-04-14



[\[pdf\]](#)  
Саундбар Redmi TV DNS CMIIT ID 2020DP1399 Комплектация саундбар кабель S PDFIF аудио 3 5 мм jack поролоно вая прокладка EVA 2 шт винт переходник EU saundbar xiaomi redmi tv soundbar cernyj instrukcia 1 drv dns shop ru Manuals |||  
Redmi TV mi.com , Redmi. , , , , , . ... ndbar. 4. Bluetooth- Bluetooth, 1,5 , . 5. , /. 3 , , . : **MDZ-34-DA** . Redmi. : 220 50 . 0,8 . - : 70 20 10 . : 12 2 1 . : 4 . THD 1 ...  
lang:i-klngon **score:26** filesize: 400.89 K page\_count: 16 document date: 2021-04-14





[\[pdf\]](#)

Инструкция по эксплуатации Xiaomi Redmi TV Soundbar MDZ 34 DA Саундбар — купить в Минске недорого цена интернет магазине 360shop by 177vrd8nwnk1gg5ttwl1ze6slg4lhmas upload iblock 66d

|||

17.05.2023, 15:47 saundbar-xiaomi-redmi-tv-soundbar-cernyj\_instrukcia\_1.pdf  
[https://docs.yandex.ru/docs/view tm=1684327652 tld=ru lang=kk name=soundbar-xiaomi-redmi-tv-soundbar-cernyj\\_instrukcia\\_1.pdf text=... 1/16 17.05.2023, 15:47 saundbar-xiaomi-redmi-tv-soundbar-cernyj\\_instrukcia\\_1.pdf htt...](https://docs.yandex.ru/docs/view tm=1684327652 tld=ru lang=kk name=soundbar-xiaomi-redmi-tv-soundbar-cernyj_instrukcia_1.pdf text=... 1/16 17.05.2023, 15:47 saundbar-xiaomi-redmi-tv-soundbar-cernyj_instrukcia_1.pdf htt...)  
lang:tl score:21 filesize: 1.77 M page\_count: 16 document date: 2023-05-17