

[manuals.plus](#) /

› [ATOTO](#) /

› [ATOTO S8G2114PM 2nd Gen Android Car Stereo Instruction Manual](#)

ATOTO S8G2114PM

ATOTO S8G2114PM 2nd Gen Android Car Stereo Instruction Manual

Model: S8G2114PM | Brand: ATOTO

1. PRODUCT OVERVIEW

The ATOTO S8G2114PM is a 2nd generation Android car stereo designed for enhanced in-car entertainment and connectivity. It features a 10.1-inch QLED display, an ARM Cortex Octa-Core processor, and ATOTO AICE UI 11.0 for optimized performance. Key functionalities include multiple internet access options, advanced audio controls, and comprehensive phone integration.



Figure 1: ATOTO S8G2114PM Home Screen. This image displays the main user interface of the ATOTO S8G2114PM car stereo, showing various application icons and media playback controls.

2. WHAT'S IN THE BOX

- Car Stereo
- GPS Antenna
- External Microphone
- WiFi Antenna
- Power Cable

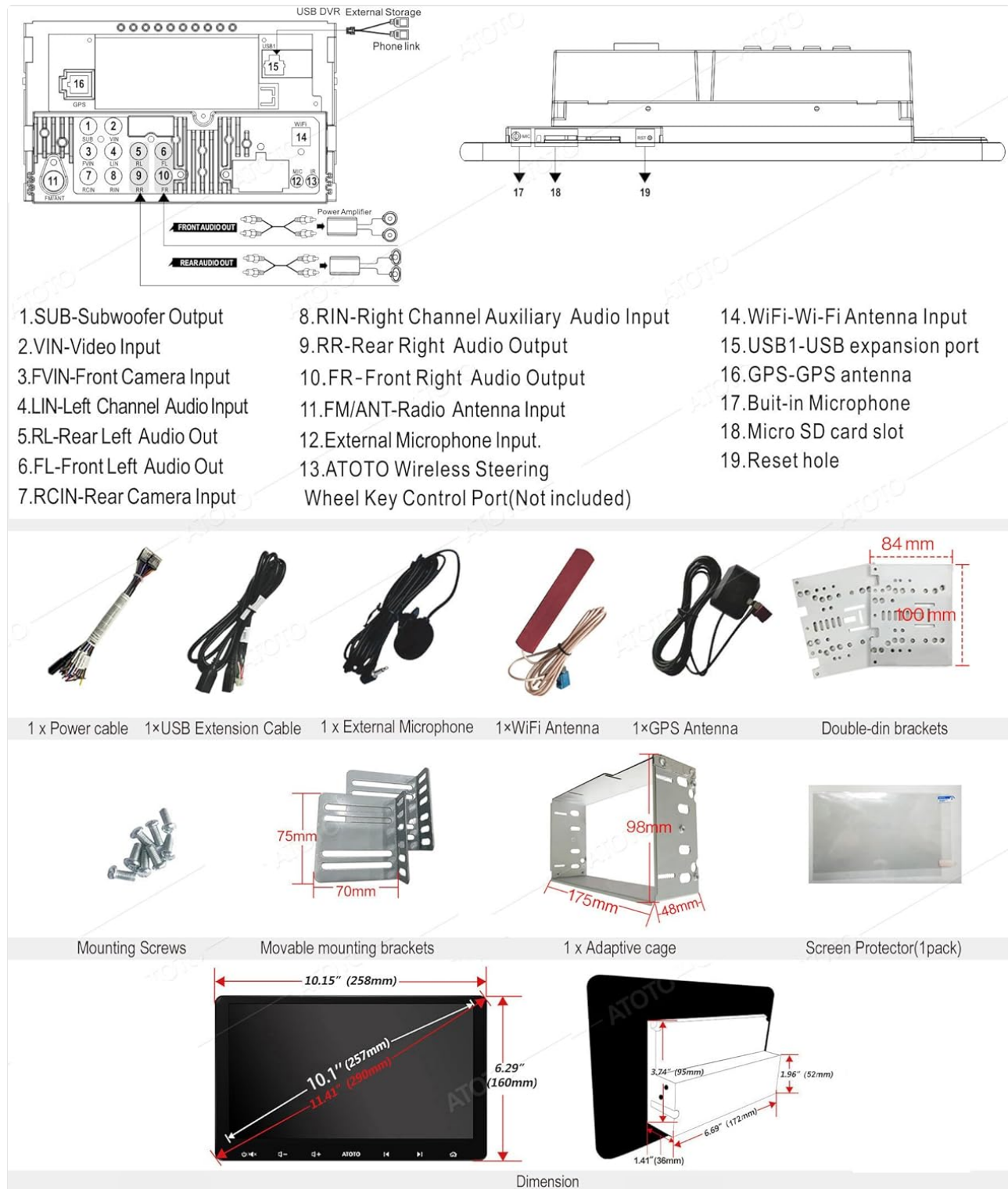


Figure 2: Wiring Diagram and Included Components. This image illustrates the various cables and accessories included with the ATOTO S8G2114PM, along with a detailed wiring diagram and unit dimensions.

3. SETUP AND INSTALLATION

3.1 Unboxing

Carefully unpack all components and verify against the 'What's in the Box' section. Inspect for any damage.

Your browser does not support the video tag.

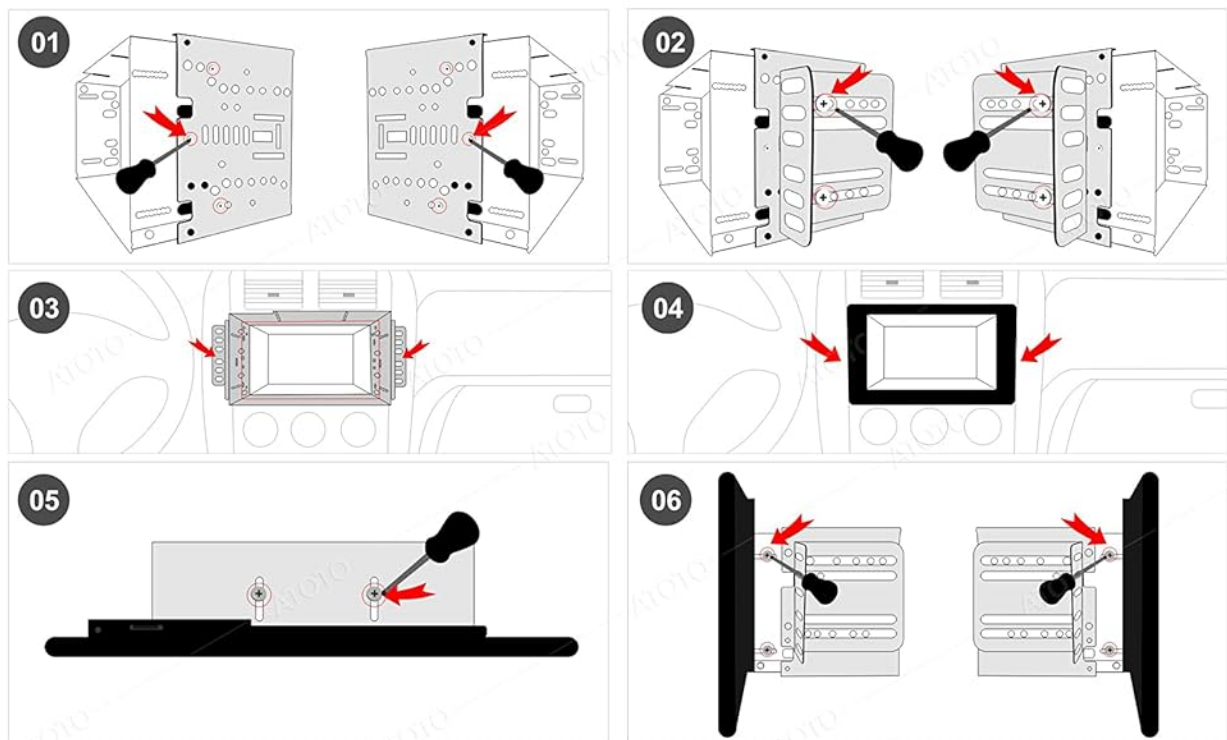
Video 1: Unboxing of ATOTO S8G2114PM Android Car Stereo. This video demonstrates the unboxing process of the ATOTO S8G2114PM, showing the contents of the package.

3.2 Physical Installation

The S8G2114PM utilizes an IAH10D style (Integrated and Adaptive Head-unit of 10.1-inch Display) for installation. This often requires a vehicle-specific installation dash kit (wiring harness, data interface, mounting kit) from YO-FUNG for an OEM factory-style fit. Ensure your vehicle's dashboard opening is compatible. For some vehicles, the 10.1-inch display may partially obstruct air vents or controls.

Installation

Double-DIN Installation



Customized Installation For Specified Vehicles

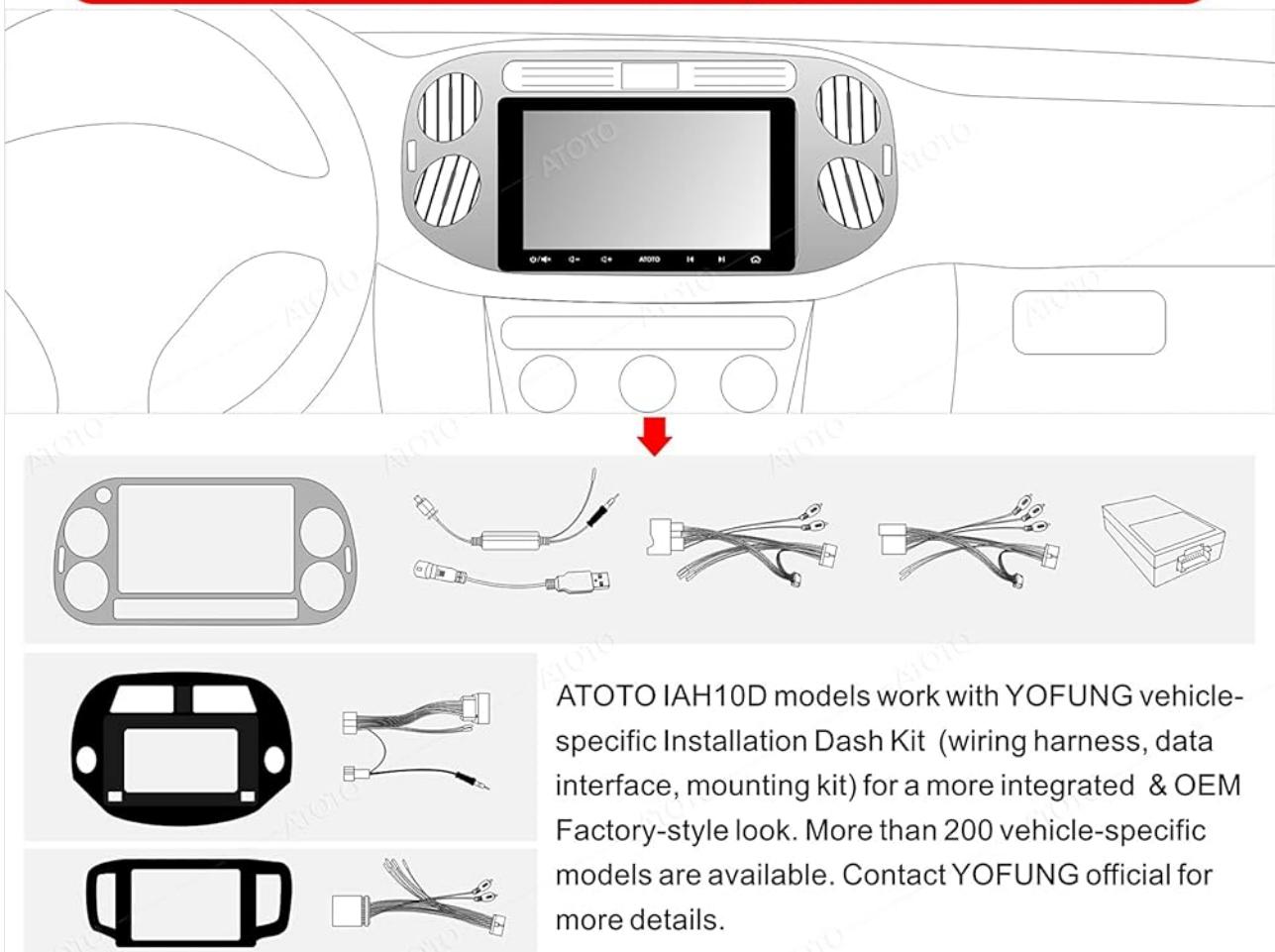


Figure 3: Double-DIN Installation Guide. This image provides a visual guide for the double-DIN installation process, including steps for mounting and fitting the head unit into the dashboard.

Your browser does not support the video tag.

Video 2: ATOTO S8G2114PM Head Unit Installation. This video provides a detailed walkthrough of the installation process for the ATOTO S8G2114PM head unit.

Your browser does not support the video tag.

Video 3: Installation Advices for ATOTO (IAH10D Style) Headunit. This video offers additional advice and tips for installing ATOTO head units with the IAH10D style.

4. OPERATING INSTRUCTIONS

4.1 User Interface and Touch Gestures

The S8 features ATOTO AICE UI 11.0, a deeply customized Android Q interface. It supports 6 touch gestures, including 2-fingers/3-fingers tap, for quick access to multi-task menus, EQ modes, and screen brightness adjustments, enhancing operational safety.



Compatible with original steering wheel control (conditions may apply)





Figure 4: Touch Gesture Operation. This image demonstrates the touch gesture functionalities and compatibility with wireless steering wheel remote controls for the ATOTO S8G2114PM.

4.2 Connectivity

The S8 offers three options for internet access: Wi-Fi hotspot, Bluetooth tethering, and USB tethering. Dual Bluetooth chips (BT1 with Qualcomm aptX HD codec and BT2 for tethering/BLE) enable multi-connections with phones and other Bluetooth devices.

3 Ways to Access the Internet



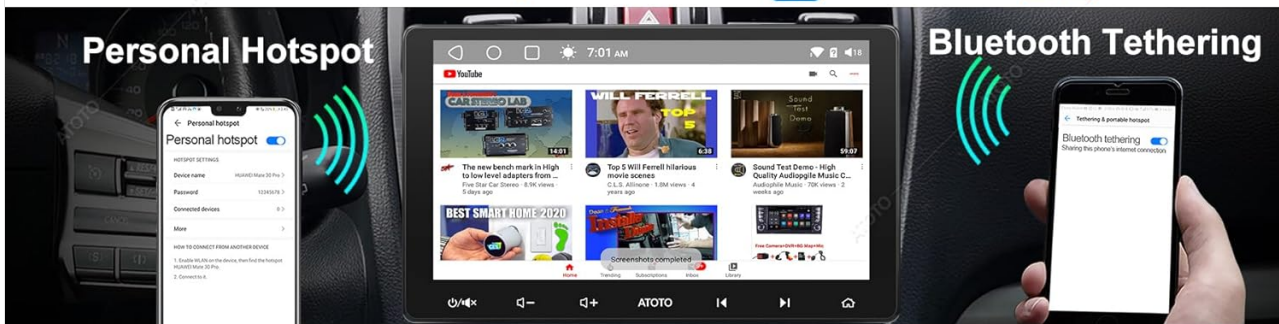
USB Network Tethering



Bluetooth Tethering



Personal Hotspot



EasyConnection - Cast what's displayed on your smartphone to S8's large screen



Seamless Phone Integration

It seamlessly integrates your smartphone with the S8's built-in display and allows you to make phone calls, access your music, send and receive messages, get directions while you stay focused on the road.

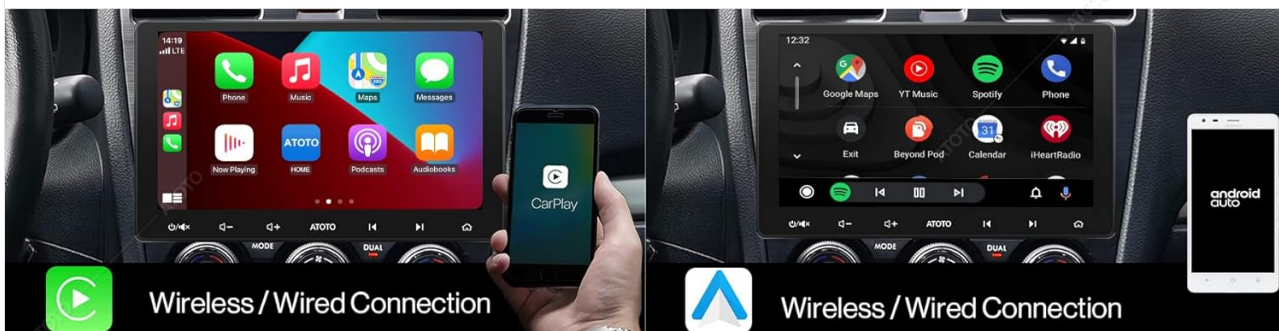


Figure 5: Connectivity Options. This image highlights the various connectivity features of the ATOTO S8G2114PM, including Wi-Fi, Bluetooth, USB tethering, EasyConnection, and seamless phone integration.

4.3 Phone Integration

Built-in phone integration supports both wired and wireless Android Auto, as well as wired and wireless CarPlay.

Your browser does not support the video tag.

Video 4: ATOTO S8G2114PM Head Unit Wireless & Wired Carplay Display. This video demonstrates the wireless and wired CarPlay functionality on the ATOTO S8G2114PM head unit.

4.4 Audio Features

Experience enhanced audio quality with Qualcomm aptX HD codec support for 24-bit music over Bluetooth (requires phone compatibility). The Speed Compensated Volume Control (SCVC) automatically adjusts the system volume based on vehicle speed to counteract road and wind noise.

4.5 Display Features

The 10.1-inch 1280x720 QLED display utilizes quantum film LED-backlit LCD technology for greatly improved color effects (Enhanced R.G.B display).

4.6 Camera Integration

When paired with ATOTO AC-HD03LR cameras (sold separately), the unit provides HD Virtual Surround-View (VSV) and Live Rear-View (LRV) displays. This allows access to rearview even when moving forward, reducing blind spots caused by headrests and rear pillars.

01



Qualcomm®
aptX™ HD

Ultra Bluetooth - with aptX & aptX HD codec, Privacy Protect, Low latency streaming, and Voice Assistant features.

02

Ultra Clear QLED Display

Quantum film LED-backlit LCD tech, great color effect (R.G.B), retains the advantages of IPS display..



03



HD Virtual Surround-View Parking (Bird's-Eye View of Surroundings) & Live Rearview (LRV) Option - Easy Installation



This feature requires only single camera, a specified ATOTO AC-HD03LR 720P camera (sold separately)

Figure 6: QLED Display and Camera Features. This image illustrates the vibrant QLED display and the capabilities of the HD Virtual Surround-View (VSV) and Live Rear-View (LRV) parking options.

4.7 TrackHU GPS Tracking

Utilize the exclusive TrackHU GPS tracking app for real-time vehicle monitoring with a 15-second refresh rate. It supports OsmAnd's 4-satellite positioning, track playback with speed control, detailed reports, and instant online/offline status and geofence alerts.

Your browser does not support the video tag.

Video 5: TrackHU GPS Tracking APP for ATOTO Android System. This video explains the features and usage of the TrackHU GPS tracking application on ATOTO Android systems.

5. MAINTENANCE

Regular system firmware updates are available from ATOTO to ensure optimal performance and access to new features. Check the ATOTO website or FindApps for the latest updates.

6. TROUBLESHOOTING

For any operational issues or installation difficulties, refer to the detailed instruction guides provided with your product. If problems persist, contact ATOTO customer support for assistance.

7. SPECIFICATIONS

Feature	Detail
Package Dimensions	11.54 x 9.69 x 4.33 inches
Item Weight	4.4 pounds
Item Model Number	S8G2114PM
Date First Available	November 1, 2020
Manufacturer	ATOTO
Connectivity Technology	Bluetooth, USB, Wi-Fi
Controller Type	Google Assistant, Siri
Special Features	Compatible with SXM, Dual Bluetooth w/aptX HD, GPS Tracking, HD Virtual Surround-View (VSV) and Live Rear-View (LRV), Wireless CarPlay & Android Auto
Compatible Devices	Amplifier, Smartphone, Speaker
Connector Type	RCA, USB Type A
Audio Output Mode	Mono, Stereo

Surround Sound Channel Configuration	5.1
Video Encoding	H.263, H.264, DIVX4-6, XVID Decoder
Output Power	180 Watts

8. WARRANTY AND SUPPORT

The product includes 12+6 months of product care. Continuous system firmware updates are available from ATOTO. For support, please refer to your order center or contact ATOTO after-sales service team.