

## vidaXL 51194

# vidaXL Double Washing Machine and Dryer Stand (Model 51194) - Instruction Manual

Brand: vidaXL | Model: 51194

## 1. INTRODUCTION

This instruction manual provides essential information for the safe and efficient assembly, operation, and maintenance of your vidaXL Double Washing Machine and Dryer Stand. Please read this manual thoroughly before installation and keep it for future reference.

The vidaXL Double Washing Machine and Dryer Stand is designed to elevate your washing machine and dryer to a more ergonomic working height, reducing the need to bend excessively when loading or unloading laundry. Its robust steel construction ensures stability and durability for your appliances.

## 2. PRODUCT OVERVIEW

The vidaXL Double Washing Machine and Dryer Stand is a sturdy appliance pedestal crafted from durable steel. It features anti-slip pads and rubberized feet to ensure your appliances remain stable and to protect your flooring from scratches. This model is designed without integrated storage.

- **Robust Steel Construction:** Provides strong support and long-lasting durability.
- **Ergonomic Height:** Elevates appliances for easier access, reducing strain.
- **Anti-Slip Pads:** Ensures appliances stay securely in place.
- **Rubberized Feet:** Offers stability and protects floor surfaces.
- **High Load Capacity:** Each side supports up to 100 kg, for a total of 200 kg.

## 3. SAFETY INFORMATION

- Always ensure the stand is placed on a firm, level, and stable surface.
- Do not exceed the maximum weight capacity of 200 kg (100 kg per appliance).
- Ensure both the washing machine and dryer are centered and stable on the stand before operation.
- Verify all assembly connections are securely tightened before placing appliances on the stand.

- Do not attempt to move the stand with appliances on it. Appliances must be removed before repositioning the stand.
- Keep children and pets away from the stand during installation and when appliances are in operation.

## 4. PACKAGE CONTENTS

---

Please check that all components are present and undamaged before beginning assembly:

- Main frame sections (various pieces)
- Connecting tubes/bars
- Legs/Feet with rubberized bases
- Anti-slip pads
- Assembly hardware (screws, bolts, nuts)
- Assembly tool (e.g., Allen key, wrench)



Image: All components of the vidaXL Double Washing Machine and Dryer Stand laid out.

## 5. SETUP (ASSEMBLY INSTRUCTIONS)

---

Follow these steps carefully to assemble your appliance stand:

1. **Unpack and Identify Parts:** Carefully remove all components from the packaging. Refer to the parts list to ensure everything is present.
2. **Assemble the Main Frame:** Connect the various frame sections using the provided connecting tubes/bars and hardware. Ensure all connections are aligned correctly before tightening.
3. **Attach the Legs:** Securely attach the legs to the main frame using the provided screws. Ensure the rubberized feet are at the bottom of each leg.
4. **Install Anti-Slip Pads:** Place the anti-slip pads on the top surface of the stand where the appliances will rest. These pads help prevent movement and reduce vibration.
5. **Final Tightening:** Double-check all screws and bolts to ensure they are fully tightened. The stand must be rigid and stable.
6. **Position the Stand:** Carefully place the assembled stand in its desired location. Ensure the floor is level.
7. **Place Appliances:** With assistance, carefully lift and place your washing machine and dryer onto the stand. Ensure each appliance is centered on its respective section of the stand.

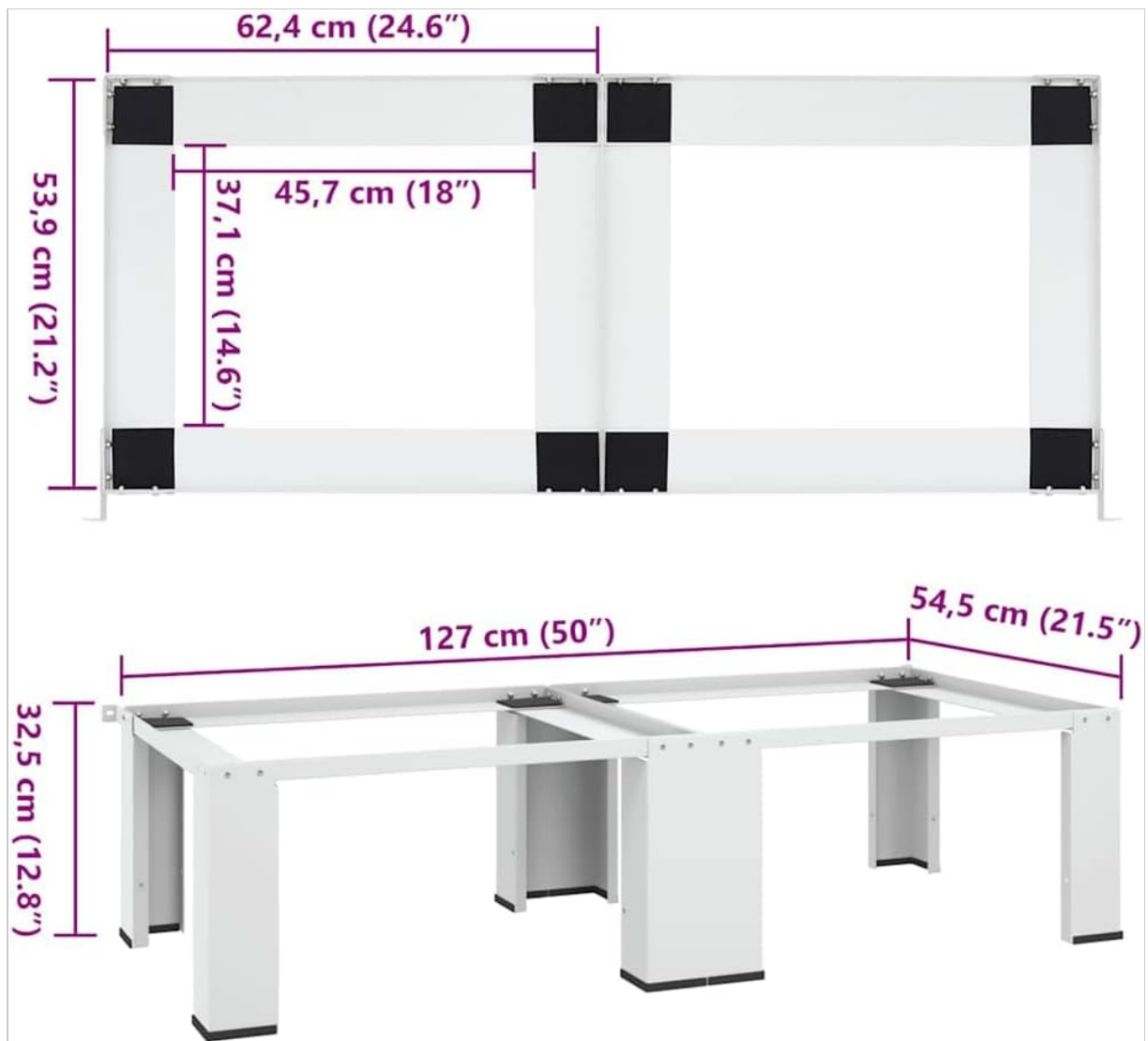


Image: Detailed dimensions of the stand for proper placement.

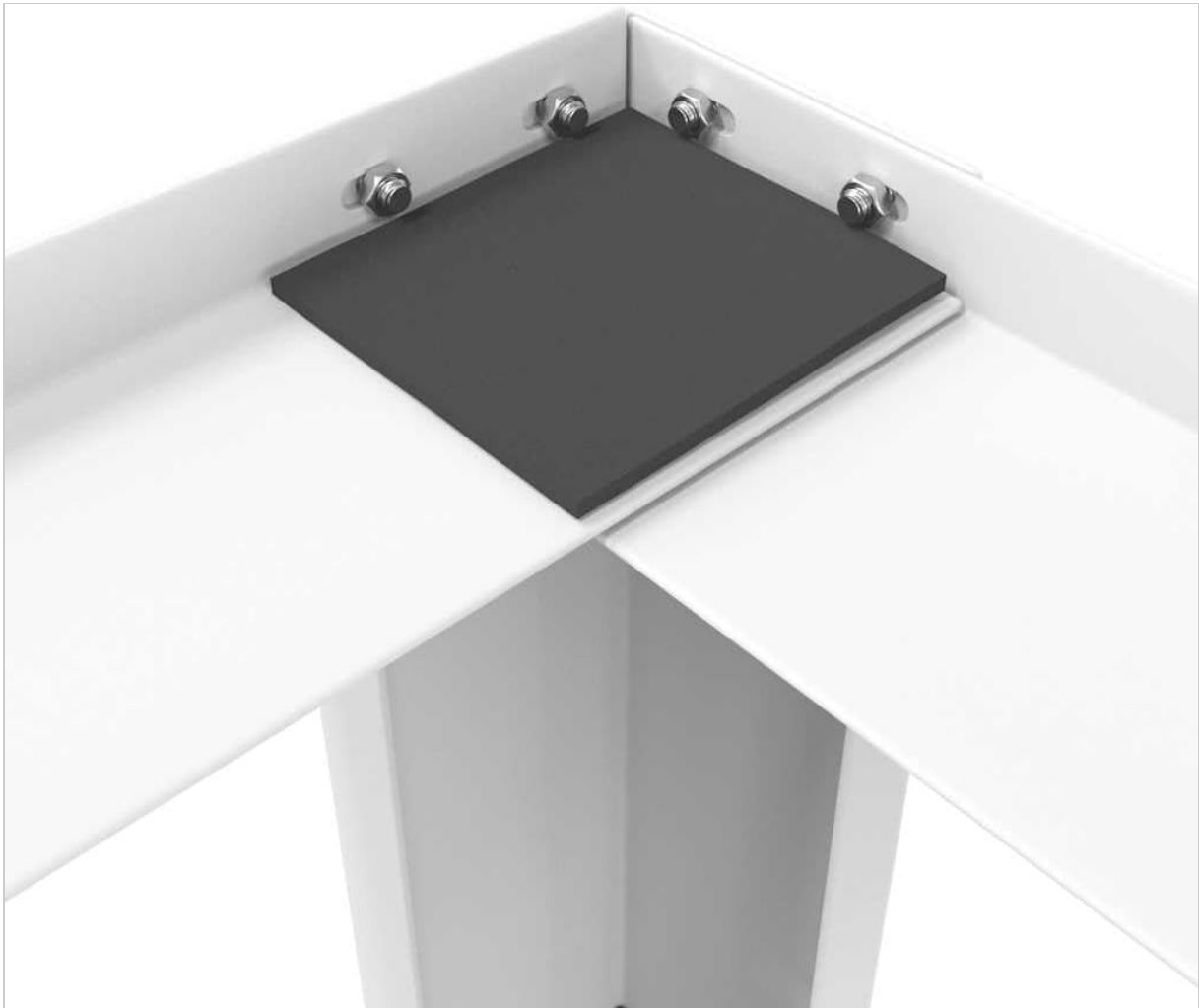


Image: Close-up of an anti-slip pad, crucial for appliance stability.

## 6. OPERATING INSTRUCTIONS

---

The stand itself does not require operational steps, but proper usage with your appliances is key:

- Before each use of your washing machine or dryer, ensure both appliances are stable and properly seated on the stand.
- Verify that the stand remains on a level surface to prevent excessive vibration or movement during appliance cycles.
- Always load and unload your appliances carefully to maintain balance.

## 7. MAINTENANCE

---

- **Regular Inspection:** Periodically check all screws, bolts, and connections to ensure they remain tight. Re-tighten if necessary.
- **Cleaning:** Clean the stand regularly with a soft, damp cloth and a mild, non-abrasive detergent. Avoid harsh chemicals that could damage the finish.
- **Feet and Pads:** Inspect the rubberized feet and anti-slip pads for any signs of wear, damage, or displacement. Replace if needed to maintain stability and floor protection.
- **Moisture:** Ensure no water or moisture accumulates on or around the stand, especially at the joints, to prevent corrosion.

## 8. TROUBLESHOOTING

---

- **Issue: Stand is unstable or wobbles.**  
**Solution:** Check if the floor surface is perfectly level. Adjust the position of the stand if necessary. Verify that all assembly screws and bolts are securely tightened. Ensure both appliances are properly centered on the stand.
- **Issue: Excessive vibration during appliance operation.**  
**Solution:** This can be caused by an unlevel surface or unbalanced appliances. Re-check the levelness of the stand and ensure the appliances are balanced according to their own instruction manuals. Confirm that the anti-slip pads are correctly positioned and intact.
- **Issue: Scratches on the floor.**  
**Solution:** Ensure the rubberized feet are properly installed and are not damaged. Avoid dragging the stand across the floor; always lift it when repositioning.

## 9. SPECIFICATIONS

Feature	Detail
Brand	vidaXL
Model Number	51194
Color	White
Material	Steel Alloy
Dimensions (L x W x H)	127 x 54.5 x 32.5 cm (50 x 21.5 x 12.8 inches)
Item Weight	12.14 kg (26.76 lbs)
Weight Capacity	200 kg (100 kg per appliance)
Assembly Required	Yes
Special Features	Robust steel frame, anti-slip pads, rubberized feet

## 10. WARRANTY AND SUPPORT

For warranty information and customer support, please refer to the documentation included with your purchase or visit the official vidaXL website. Keep your proof of purchase for any warranty claims.

No official product videos directly demonstrating the assembly or use of this specific vidaXL Double Washing Machine and Dryer Stand (Model 51194) from the seller were found in the provided data.