

## JouSecu N029-002

# JouSecu Home Security Camera System User Manual

Model: N029-002, N029/N029-4C0T/N029-8C2T

## 1. INTRODUCTION

This manual provides detailed instructions for the installation, operation, and maintenance of your JouSecu Home Security Camera System. This wireless surveillance NVR kit is designed to provide reliable and comprehensive security monitoring for your home or business. Please read this manual thoroughly before using the product to ensure proper setup and functionality.



Figure 1.1: JouSecu Home Security Camera System overview, highlighting key features such as Night Vision, IP66 Waterproofing, Motion Detection, Remote View, 24/7 Recording, H.265+ compression, 1080p resolution, and Wireless connectivity.

## 2. PRODUCT OVERVIEW AND COMPONENTS

The JouSecu Home Security Camera System includes a Network Video Recorder (NVR) and wireless cameras designed for easy installation and robust performance. Each camera is equipped with advanced features to ensure clear surveillance.



Figure 2.1: A single JouSecu wireless security camera shown with its power adapter. This camera is an add-on unit compatible with the NVR system.



Figure 2.2: Detailed breakdown of the camera's features, including the Wireless Antenna, IP66 Waterproof housing, IR LED Array for night vision, Full HD Lens, Auto Day/Night sensor, RJ45 Port for wired connection, and DC Port (Input Power 12V 1A).

### 3. SETUP INSTRUCTIONS

Follow these steps to set up your JouSecu Home Security Camera System. Ensure all components are present before beginning.

#### 3.1 Initial Connection and Camera Pairing

To add a camera to your NVR system, follow the steps outlined in the video below. This process involves connecting the camera to the NVR via a network cable for initial pairing, searching for the camera on the NVR interface, matching the code, and then disconnecting the network cable for wireless operation.

Your browser does not support the video tag.

Video 3.1: This video demonstrates how to add a camera to your NVR system. It shows the process of supplying power to the camera, connecting it to the NVR via a network cable, navigating to the video management settings, searching for the camera, matching the code, and finally unplugging the network cable for wireless connection. The video is 49 seconds long.

#### 3.2 System Connection Diagram

The diagram below illustrates how the NVR system, cameras, and your home network are connected for optimal performance.



Figure 3.1: Connection diagram showing the NVR connected to a power source and a router via Ethernet. Wireless cameras are shown connecting to the NVR, and one camera is depicted installed outdoors, powered by a nearby outlet.

### 3.3 Remote View Setup

To access your security system remotely via a mobile application, follow these steps:

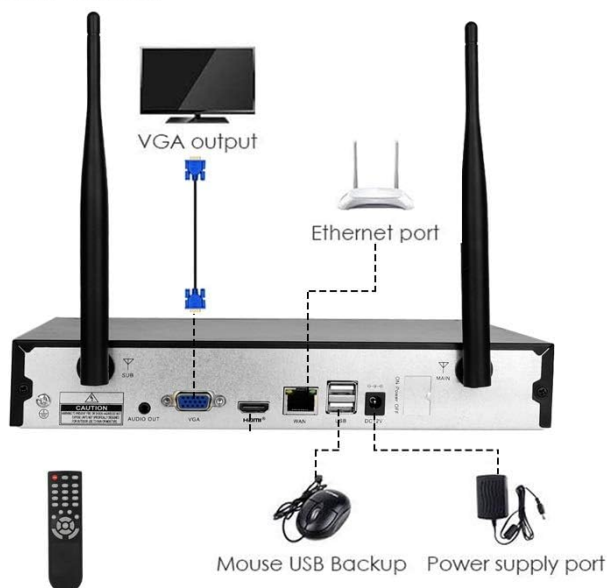
1. Connect your NVR system (up to 8CH IP camera support).
2. Scan the provided QR codes to download the EseeCloud APP for Android or iOS.
3. Scan the Cloud ID to add the device to the app.
4. Enjoy real-time video preview, recording, synchronized playback, and backup on your mobile device.



# Easy Remote View Setup

1

Connect your NVR system IP Camera Auto Pair up to 8CH IP camera



2

Scan code to download APP



Android Client Link



iOS Client Link



3

Scan the Cloud ID to add the device



4

Real Time Video Preview Recording Synchronized Playback And Backup.

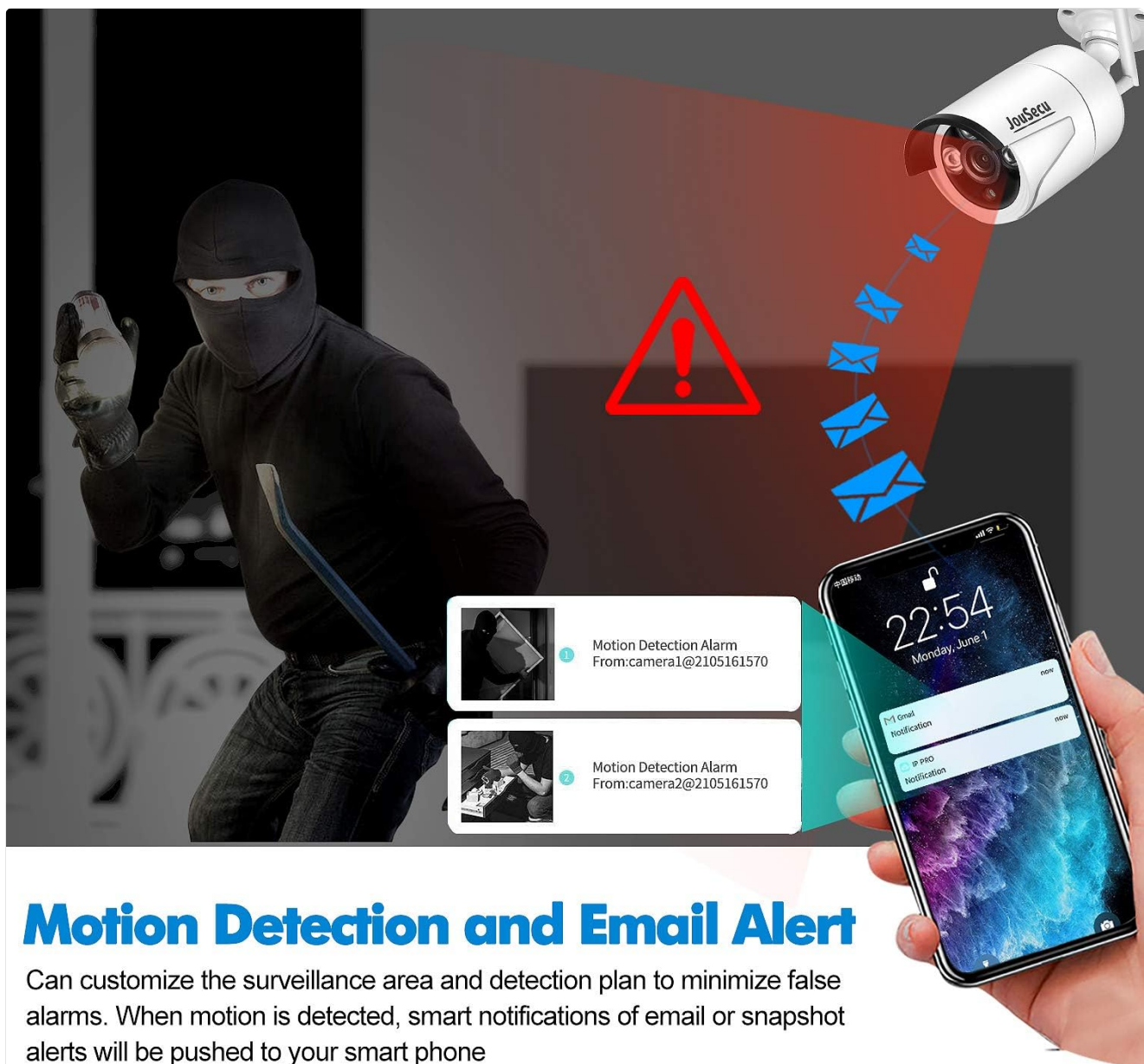


Figure 3.2: Step-by-step guide for setting up remote viewing, including NVR connections (VGA output, Ethernet port, Mouse USB Backup, Power supply port) and mobile app screenshots for scanning QR codes and viewing live feeds. The iOS client link is <http://www.dvr163.com/download/ios.php?!=en>.

## 4. OPERATING INSTRUCTIONS

### 4.1 Motion Detection and Email Alerts

The system supports customizable motion detection areas and detection plans to minimize false alarms. When motion is detected, smart notifications, email alerts, or snapshot alerts can be pushed directly to your smartphone, keeping you informed of any activity.



## Motion Detection and Email Alert

Can customize the surveillance area and detection plan to minimize false alarms. When motion is detected, smart notifications of email or snapshot alerts will be pushed to your smart phone

Figure 4.1: Illustration of the motion detection feature, showing a camera detecting an intruder and sending instant notifications and snapshots to a smartphone.

### 4.2 One-Way Audio

The IP camera features a built-in microphone with one-way audio functionality. The NVR system can record the audio from the surveillance scene, providing additional evidence if needed.

# One way audio

IP Camera built in microphone, with one-way audio function,NVR system can record the shooting scene the sound,Provide favorable evidence for the you

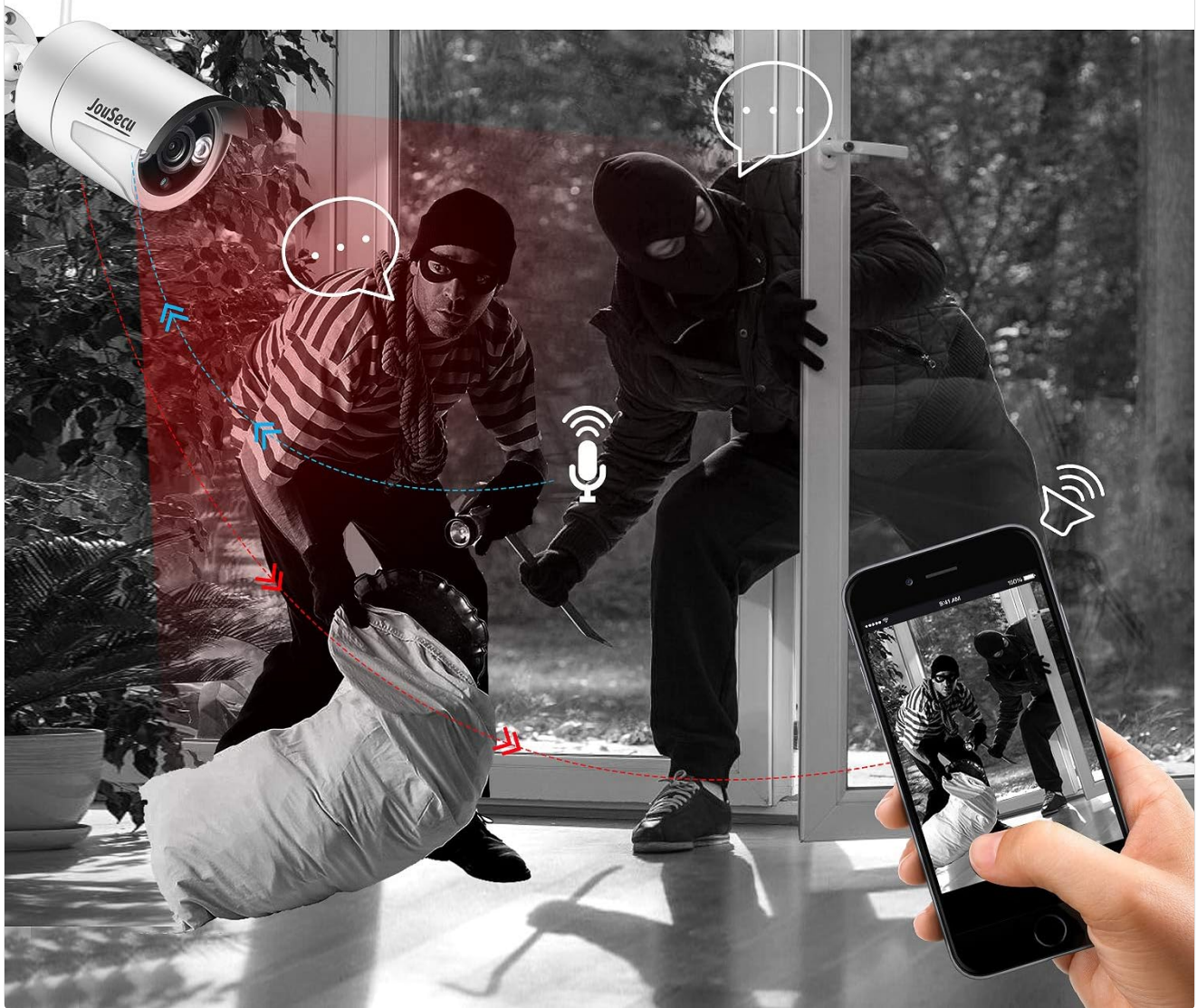


Figure 4.2: Depiction of the one-way audio feature, showing the camera capturing sound and the audio being accessible via the mobile app, useful for recording events.

## 4.3 Day and Night Vision

The cameras are equipped with an Auto Day/Night sensor and IR LED Array, providing clear surveillance both during the day and in low-light or nighttime conditions.





Figure 4.3: Comparison of camera performance during day (color image) and night (black and white infrared image), demonstrating effective night vision capabilities. The image also highlights the camera's IP66 waterproof rating and operating temperature range of -20°C to 50°C (-4°F to 122°F).

## 5. MAINTENANCE

To ensure the longevity and optimal performance of your JouSecu security system, regular maintenance is recommended:

- **Clean Lenses:** Periodically wipe camera lenses with a soft, damp cloth to remove dust and smudges that may affect image clarity.
- **Check Connections:** Ensure all power and network cables are securely connected to prevent signal loss.
- **Firmware Updates:** Check the manufacturer's website or app for any available firmware updates for your NVR and cameras to ensure the latest features and security patches.
- **Environmental Protection:** While cameras are IP66 waterproof, avoid direct high-pressure water jets and extreme environmental conditions beyond the specified operating range.

## 6. TROUBLESHOOTING

If you encounter issues with your JouSecu Home Security Camera System, refer to the following common



troubleshooting tips:

Problem	Possible Cause	Solution
Camera not connecting/no image	No power; out of range; pairing issue; network cable issue (if wired)	Check power supply; move camera closer to NVR; re-pair camera using the 'Match code' function (refer to Section 3.1); ensure network cable is properly connected if using wired setup.
Poor image quality	Dirty lens; low light conditions; interference	Clean the camera lens; ensure sufficient lighting or proper night vision activation; reduce wireless interference by repositioning camera or NVR.
No remote access	NVR not connected to internet; incorrect app settings; firewall issues	Verify NVR's internet connection; re-check app setup steps (Section 3.3); ensure router firewall is not blocking necessary ports.
Motion detection false alarms	Sensitive settings; environmental factors (e.g., moving branches)	Adjust motion detection sensitivity; refine detection zones to exclude areas with frequent non-threatening movement.

## 7. SPECIFICATIONS

Key technical specifications for the JouSecu Home Security Camera System (Model N029-002):

- **Brand:** JouSecu
- **Connectivity Technology:** Wireless
- **Video Capture Resolution:** 1080p
- **Special Feature:** Wireless
- **Number of Channels:** 8
- **Color:** Add-on Camera (Wireless)
- **Power Source:** Corded Electric
- **Item Dimensions (L x W x H):** 12.4 x 7.28 x 10.62 inches
- **Recommended Uses:** Surveillance
- **Compatible Devices:** Cameras
- **Signal Format:** Digital
- **Other Camera Features:** Front
- **Low Light Technology:** Night Vision
- **Frame Rate:** 15, 24, 30 fps
- **Recording Mode:** Continuous
- **Optical Sensor Technology:** CMOS
- **Hardware Interface:** 802.11 ac/b/g/n
- **Lens Type:** Fisheye
- **Video Input:** BNC, RJ45
- **Manufacturer:** JouSecu
- **UPC:** 619011991872
- **Item Weight:** 1.17 pounds
- **Date First Available:** September 7, 2020

## 8. WARRANTY AND SUPPORT


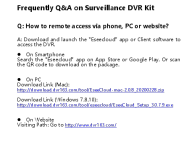

JouSecu is committed to providing high-quality security solutions. We offer life-long after-sales support and services to all customers worldwide. For technical assistance, troubleshooting beyond this manual, or warranty inquiries, please contact JouSecu customer support through the official channels provided at the point of purchase or on the JouSecu brand store.

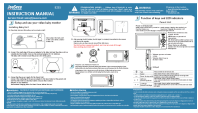


Figure 8.1: An image showing the JouSecu production and development environment, reflecting the company's commitment to product quality and customer support.

For more information, visit the [JouSecu Store](#).

### Related Documents

	<p><a href="#">JouSecu N029 Wireless NVR Kit Quick User Guide</a></p> <p>Comprehensive guide to installing and setting up the JouSecu N029 Wireless NVR Kit, including network configuration, recording setup, video playback, and mobile app integration for enhanced security surveillance.</p>
	<p><a href="#">Frequently Asked Questions: Remote Access for Surveillance DVR Kits</a></p> <p>Learn how to remotely access your JouSecu Surveillance DVR Kit via smartphone, PC, or website. This guide provides download links for the Eseecloud app and client software.</p>
	<p><a href="#">JouSecu NVR Quick User Guide</a></p> <p>A quick user guide for the JouSecu NVR system, covering installation, setup, network configuration, recording, video playback, and mobile app usage. Includes instructions for wireless IP cameras and troubleshooting tips.</p>



### [JouSecu B255 Video Baby Monitor Instruction Manual](#)

Comprehensive guide to setting up and operating the JouSecu B255 video baby monitor, including features, safety warnings, and troubleshooting tips.