

CableCreation CD0759

CableCreation USB 3.0 to Gigabit Ethernet Adapter User Manual

Model: CD0759

1. INTRODUCTION

This manual provides comprehensive instructions for the CableCreation USB 3.0 to Gigabit Ethernet Adapter (Model CD0759). This device allows you to connect your USB 3.0 enabled computer or laptop to a wired network, providing a stable and high-speed internet connection up to 1000 Mbps. Please read this manual thoroughly before using the product to ensure proper operation and longevity.

2. PRODUCT OVERVIEW

The CableCreation USB 3.0 to Gigabit Ethernet Adapter is designed for reliable and fast network connectivity. Key features include:

- **High-Speed Connectivity:** Supports Gigabit Ethernet (1000 Mbps) with backward compatibility for 10/100 Mbps networks.
- **USB 3.0 Interface:** Utilizes a SuperSpeed USB 3.0 interface for data transfer rates up to 5 Gbps.
- **Durable Design:** Features a premium aluminum housing for efficient heat dissipation and a flexible, braided cable for enhanced durability.
- **Compact and Portable:** Lightweight and small form factor for easy transport.



Figure 2.1: CableCreation USB 3.0 to Gigabit Ethernet Adapter. This image shows the adapter with its USB 3.0 connector and RJ45 port, connected by a braided cable.

2.1 Design Features

- **Braided Cable:** The 12cm (approximately 4.8 inches) braided cotton cable provides extra strength and durability, reducing strain on the USB port.

- **Aluminum Housing:** The adapter's aluminum alloy casing offers superior thermal insulation and faster heat dissipation compared to plastic alternatives.
- **USB 3.0 Plug:** Designed for secure and stable connection, supporting up to 1 Gbps data transmission.

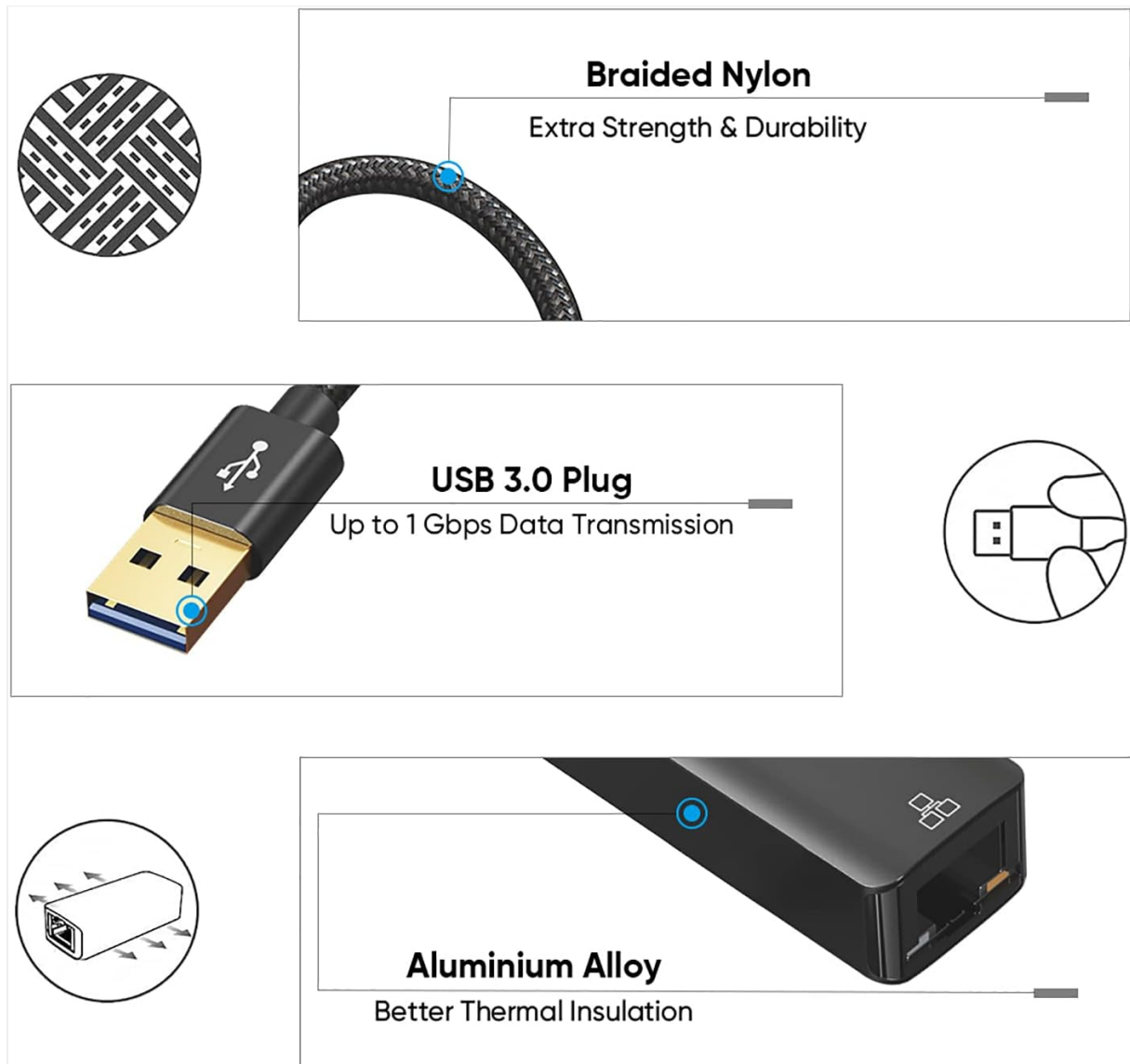


Figure 2.2: Detailed view of the adapter's design, highlighting the braided nylon cable for durability, the USB 3.0 plug for high-speed data, and the aluminum alloy housing for thermal management.

2.2 LED Indicators

The adapter features two LED indicators to provide status information:

- **Signal Indicator (Yellow):** Indicates network activity.
- **Connection Indicator (Green):** Indicates a successful network connection.

LED Indicator

■ Signal Indicator

■ Connection Indicator



Figure 2.3: Close-up of the RJ45 port showing the yellow signal indicator and green connection indicator LEDs.

3. SETUP

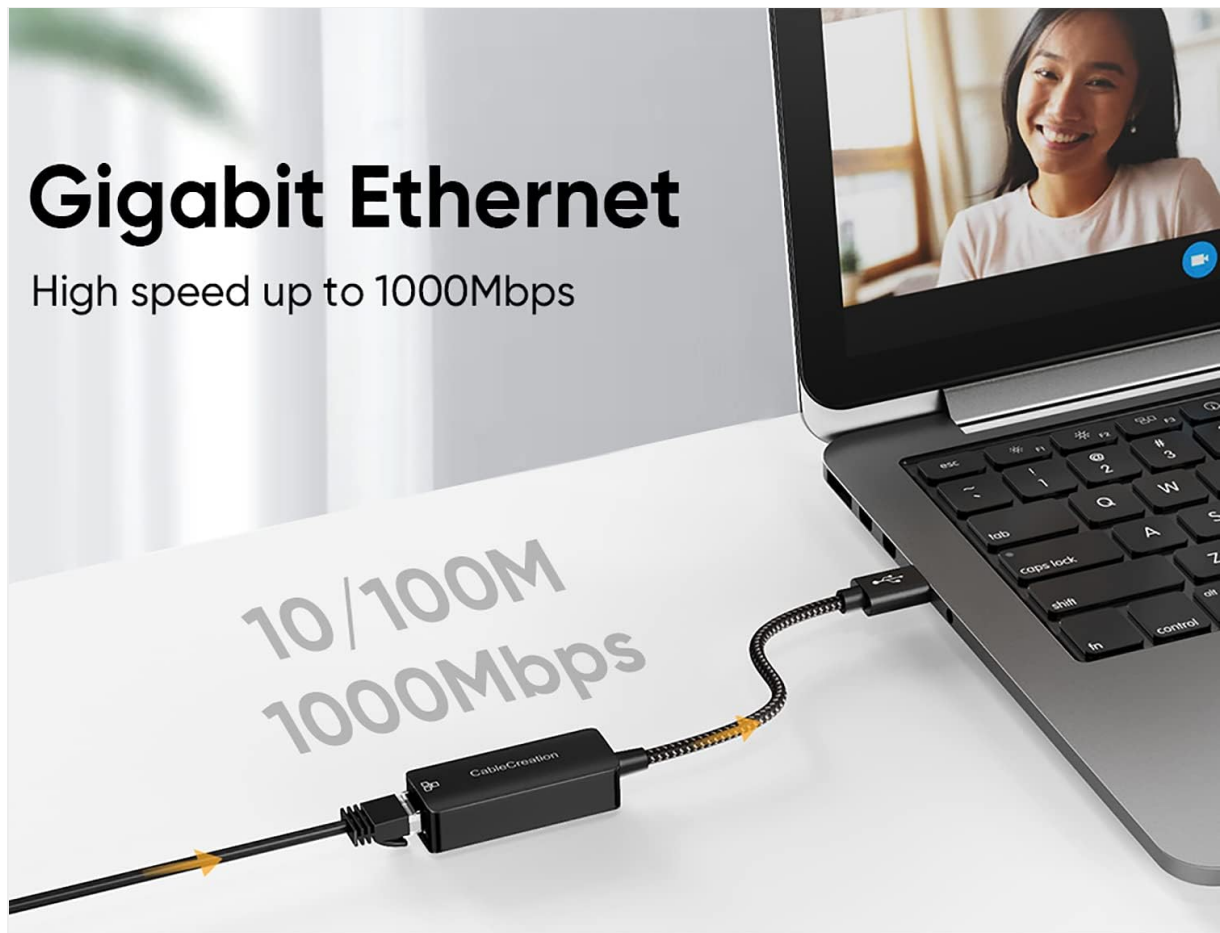
Setting up your CableCreation USB 3.0 to Gigabit Ethernet Adapter is a straightforward process.

3.1 Connecting the Adapter

1. Locate an available USB 3.0 port on your computer or laptop.
2. Plug the USB 3.0 connector of the adapter into the USB 3.0 port on your device.
3. Connect a standard RJ45 Ethernet cable from your router or network switch to the RJ45 port on the adapter.

Gigabit Ethernet

High speed up to 1000Mbps



10/100M Ethernet



100Mbps

Gigabit Ethernet 1000Mbps



1000Mbps

Figure 3.1: The adapter connected to a laptop's USB port, providing an RJ45 Ethernet connection.

3.2 Driver Installation

- **Plug and Play:** For most mainstream operating systems such as Chrome OS, Windows 10/8.1/8, the adapter is plug and play, requiring no manual driver installation.
- **Driver Installation Required:** For Windows 7/XP/Vista, macOS, and Linux systems, you may need to install a driver for first-time use. Typically, the necessary drivers are automatically detected and installed by the operating system upon connection. If not, please refer to the CableCreation support website for driver downloads.

4. OPERATING INSTRUCTIONS

Once the adapter is connected and drivers are installed (if necessary), your computer should automatically detect the wired network connection.

1. Verify the green connection indicator LED on the adapter is illuminated, indicating a successful physical connection to the network.
2. The yellow signal indicator LED will flash to show network activity (data transmission).
3. Your operating system's network settings should display a new wired connection. You can configure network preferences (e.g., IP address, DNS) through your system's network control panel if required by your network administrator.
4. Enjoy a stable and high-speed wired internet connection.

Devices



Computer



Laptop



Router



Network switch

Operating Systems



Windows 10/8/7



Mac OS



Linux



Chrome OS

Universal Compatibility



Figure 4.1: A laptop connected to a wired network via the USB to Ethernet adapter, illustrating a stable connection for tasks like data download or streaming.



Figure 4.2: Visual comparison demonstrating the potential speed and stability benefits of a wired connection (1000Mbps) over a typical Wi-Fi connection (3Mbps) for tasks like downloading large files.

5. COMPATIBILITY

The CableCreation USB 3.0 to Gigabit Ethernet Adapter offers broad compatibility with various devices and operating systems.

5.1 Supported Operating Systems

- Windows (32/64 bit) 10 / 8.1 / 8 / 7 / Vista / XP
- Mac OS X 10.5 or later
- Linux
- Chrome OS

5.2 Compatible Devices

The adapter is compatible with a wide range of devices including laptops, PCs, and tablets that have a USB 3.0 port. It is ideal for devices lacking a built-in RJ45 Ethernet port.

Note: This adapter is **NOT** compatible with Nintendo Switch, Wii, or Wii U.

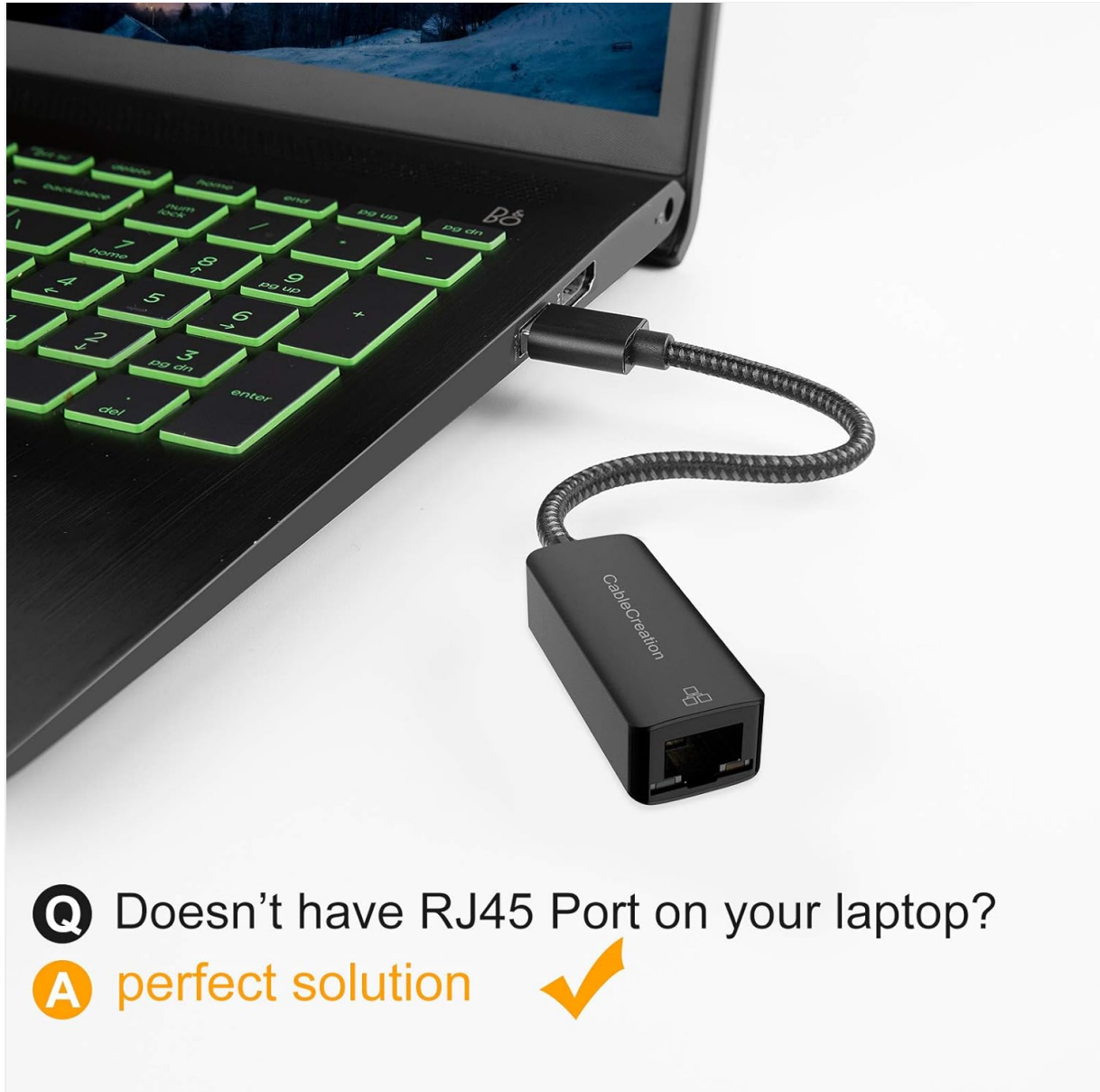


Figure 5.1: Visual representation of the adapter's universal compatibility with various devices (computers, laptops, routers, network switches) and operating systems (Windows, macOS, Linux, Chrome OS).

6. TROUBLESHOOTING

This section addresses common questions and issues you might encounter.

Q1: Does this LAN adapter require a driver?

A1: For most modern operating systems like Chrome OS, Windows 10/8.1/8, it is plug and play, meaning no driver software is required. However, for Windows 7/XP/Vista, macOS, and Linux systems, you may need to install a driver for first-time use. Your system usually handles this automatically. If not, check the CableCreation support website for specific driver downloads.

Q2: Will this work with Nintendo Switch?

A2: No, this adapter is not compatible with Nintendo Switch, Wii, or Wii U.

Q3: Will the Ethernet adapter overheat during operation?

A3: The adapter's temperature remains within a reasonable operating range. The aluminum housing is specifically designed to offer faster heat dissipation, preventing overheating.

7. SPECIFICATIONS

Model Number	CD0759
Brand	CableCreation
Hardware Interface	USB 3.0, Ethernet (RJ45)
Data Link Protocol	Ethernet, Fast Ethernet, IEEE 802.3, USB
Data Transfer Rate	1000 Megabits Per Second (Mbps)
Product Dimensions	18.49 x 11.71 x 1.7 cm
Item Weight	26 Grams
Housing Material	Aluminum
Cable Length	Approximately 12 cm (4.8 inches)



Figure 7.1: Diagram illustrating the compact dimensions of the adapter, highlighting its slim and portable design.

8. MAINTENANCE

To ensure the longevity and optimal performance of your CableCreation USB 3.0 to Gigabit Ethernet Adapter, follow these simple maintenance guidelines:




- **Cleaning:** Use a soft, dry cloth to gently wipe the adapter. Avoid using liquid cleaners or solvents, as they may damage the device.
- **Storage:** When not in use, store the adapter in a cool, dry place away from direct sunlight and extreme temperatures.
- **Handling:** Avoid bending the cable excessively or applying undue force to the connectors. Always grasp the plug when connecting or disconnecting, not the cable.
- **Environment:** Do not expose the adapter to water, moisture, or high humidity.



9. WARRANTY AND SUPPORT

CableCreation products are designed for reliability and performance. For specific warranty information, please refer to the documentation included with your purchase or visit the official CableCreation website.

For technical support, driver downloads, or further assistance, please visit the [CableCreation Store on Amazon](#) or their official support channels.

Related Documents - CD0759

	<p>CableCreation 6-in-1 USB-C Hub User Manual (Model CD0787)</p> <p>User manual for the CableCreation 6-in-1 USB-C Hub (Model CD0787), detailing its features, specifications, connection diagram, and troubleshooting for HDMI, USB-A, RJ45, and USB-C PD charging.</p>
	<p>CableCreation USB-C Hub User Manual: 7-in-1 Adapter with 4K@60Hz HDMI, PD Charging, Gigabit Ethernet</p> <p>Comprehensive user manual for the CableCreation 7-in-1 USB-C hub. Learn about its features including 4K@60Hz HDMI output, 100W PD charging, Gigabit Ethernet, USB 3.0 ports, and SD/Micro SD card reader capabilities for extending your Type-C or Thunderbolt 3 host.</p>
	<p>CableCreation USB-C Multiport Hub: Features, Specifications, Operation, and Troubleshooting Guide</p> <p>A comprehensive user manual for the CableCreation USB-C multiport hub, detailing its features, technical specifications, connection instructions, and common troubleshooting solutions. Covers models CD0395, CD0396, CD0441, CD0442, CD0443, and CD0444.</p>

<div>Type-C to HDMI Cable-6ft User Manual</div> <div></div>	<div>CableCreation Type-C to HDMI Cable (6ft) User Manual</div> <div>User manual for the CableCreation 6ft Type-C to HDMI cable, detailing features, specifications, package contents, and operation for connecting USB-C devices to HDMI displays.</div>
<div>CableCreation USB-C to HDMI Cable</div> <div>1. My HDMI monitor could not work. You can check the following steps to make it.</div> <div><p>1.1 Check the connection status of the HDMI cable. Please make sure the HDMI cable is connected to the HDMI port of the monitor and the HDMI port of the PC. If the HDMI cable is not connected, please connect it to the HDMI port of the monitor and the HDMI port of the PC.</p><p>1.2 Check the HDMI cable. Please make sure the HDMI cable is a high-speed HDMI cable. If the HDMI cable is not a high-speed HDMI cable, please replace it with a high-speed HDMI cable.</p><p>1.3 Check the HDMI port of the monitor. Please make sure the HDMI port of the monitor is not damaged. If the HDMI port of the monitor is damaged, please contact the manufacturer for replacement.</p><p>1.4 Check the HDMI port of the PC. Please make sure the HDMI port of the PC is not damaged. If the HDMI port of the PC is damaged, please contact the manufacturer for replacement.</p><p>1.5 Check the HDMI cable length. Please make sure the HDMI cable length is within the range of 15 meters. If the HDMI cable length is longer than 15 meters, please use a longer HDMI cable.</p><p>1.6 Check the HDMI cable type. Please make sure the HDMI cable is a Type-A to Type-A cable. If the HDMI cable is a Type-A to Type-C cable, please use a Type-A to Type-A cable.</p><p>1.7 Check the HDMI cable version. Please make sure the HDMI cable is a Version 2.0 cable. If the HDMI cable is a Version 1.4 cable, please use a Version 2.0 cable.</p><p>1.8 Check the HDMI cable color. Please make sure the HDMI cable is a black cable. If the HDMI cable is a red cable, please use a black cable.</p><p>1.9 Check the HDMI cable brand. Please make sure the HDMI cable is a CableCreation cable. If the HDMI cable is not a CableCreation cable, please use a CableCreation cable.</p><p>1.10 Check the HDMI cable price. Please make sure the HDMI cable is a low-price cable. If the HDMI cable is a high-price cable, please use a low-price cable.</p></div>	<div>CableCreation USB-C to HDMI Cable Troubleshooting Guide</div> <div>Troubleshooting guide for CableCreation USB-C to HDMI cable, covering common issues like monitor connection problems, display mirroring, sound issues, and compatibility with various devices.</div>
<div>Type-C to HDMI Cable User Manual</div> <div></div>	<div>CableCreation Type-C to HDMI Cable User Manual - 4K Resolution</div> <div>User manual for the CableCreation Type-C to HDMI Cable, providing details on its features, specifications, and operation for connecting USB-C devices to HDMI displays with support for 4K resolution.</div>