

[Manuals.plus](#) /

> [AILEO](#) /

> AILEO 2.5 inch Bi-Xenon HID Projector Lens with Silver Shroud and White Angel Eyes Instruction Manual

## AILEO 2.5 inch Bi-Xenon Projector lens

# AILEO 2.5 inch Bi-Xenon HID Projector Lens with Silver Shroud and White Angel Eyes Instruction Manual

Model: 2.5 inch Bi-Xenon Projector lens

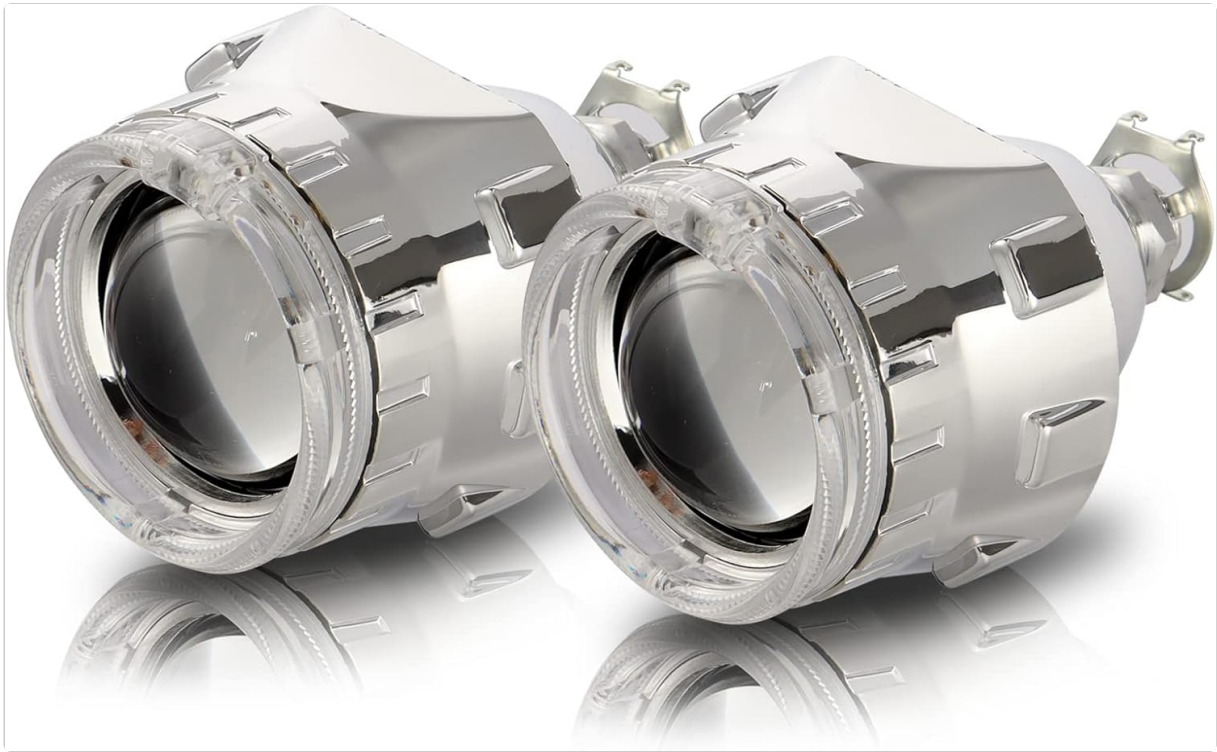
## 1. PRODUCT OVERVIEW

---

The AILEO 2.5 inch Bi-Xenon HID Projector Lens is designed to enhance vehicle lighting performance through a retrofit installation. This system provides both low beam and high beam functionality from a single projector, improving visibility and driving safety.

### Key Features:

- **HID Bi-xenon Projectors:** Offers uniform low beam and a powerful, extended high beam when activated by 12 Volts.
- **LED Angel Eyes:** Functions as Daytime Running Lights (DRL) for increased vehicle visibility and a stylish appearance.
- **Optimized Light Distribution:** Provides focused light without blinding oncoming traffic.
- **Durable Construction:** Made with a durable projector lens and metal housing for longevity.



*Figure 1: AILEO 2.5 inch Bi-Xenon HID Projector Lenses.*

This image displays two AILEO 2.5 inch Bi-Xenon HID Projector Lenses, featuring clear projector lenses and silver shrouds, ready for installation.

## **2. PACKAGE CONTENTS**

---

Verify that all components are present in your package:

- 2pcs 2.5 inch Bi-xenon projector lens
- 2pcs Projector Shrouds (Silver or Black, depending on variant)
- 2pcs H4 adapters
- 2pcs H7 adapters
- 2pcs Rubber spacers
- 2pcs Universal Installation fasteners
- 2pcs LED Angel Eye (White, Yellow, or Red, depending on variant)



Figure 2: Exploded view of projector lens components.

This image illustrates the various components of the projector lens kit, including the lens assembly, reflector bowl, anti-lock motor, and high-temperature resistant PC material.

### 3. SPECIFICATIONS

Feature	Detail
Brand	AILEO
Model	2.5 inch Bi-Xenon Projector lens
Color (Current Variant)	Silver Shroud with White Angel Eyes
Specific Uses For Product	Head Lights
Vehicle Service Type	Car (Universal Fit)
Special Feature	High Beam
Wattage	55 watts
Lens Color	White

Feature	Detail
UPC	789605755507
Item Weight	1 pounds
Package Dimensions	8.35 x 6.46 x 4.29 inches

#### 4. COMPATIBILITY

---

- **Required Bulb Type:** H1 (Xenon or LED).
- **Compatible Bulb Types:** This projector lens is designed for standard H1 xenon bulbs or AILEO 360° series H1 LED bulbs. It is **not** compatible with H1 Halogen bulbs or other socket bulbs.
- **Headlight Housing Compatibility:** This projector lens can fit H4, H7, H11, H8, H9, 9005 (HB3), and 9006 (HB4) headlight housings. It includes H4 and H7 adapters, along with universal adapters for other compatible housings.

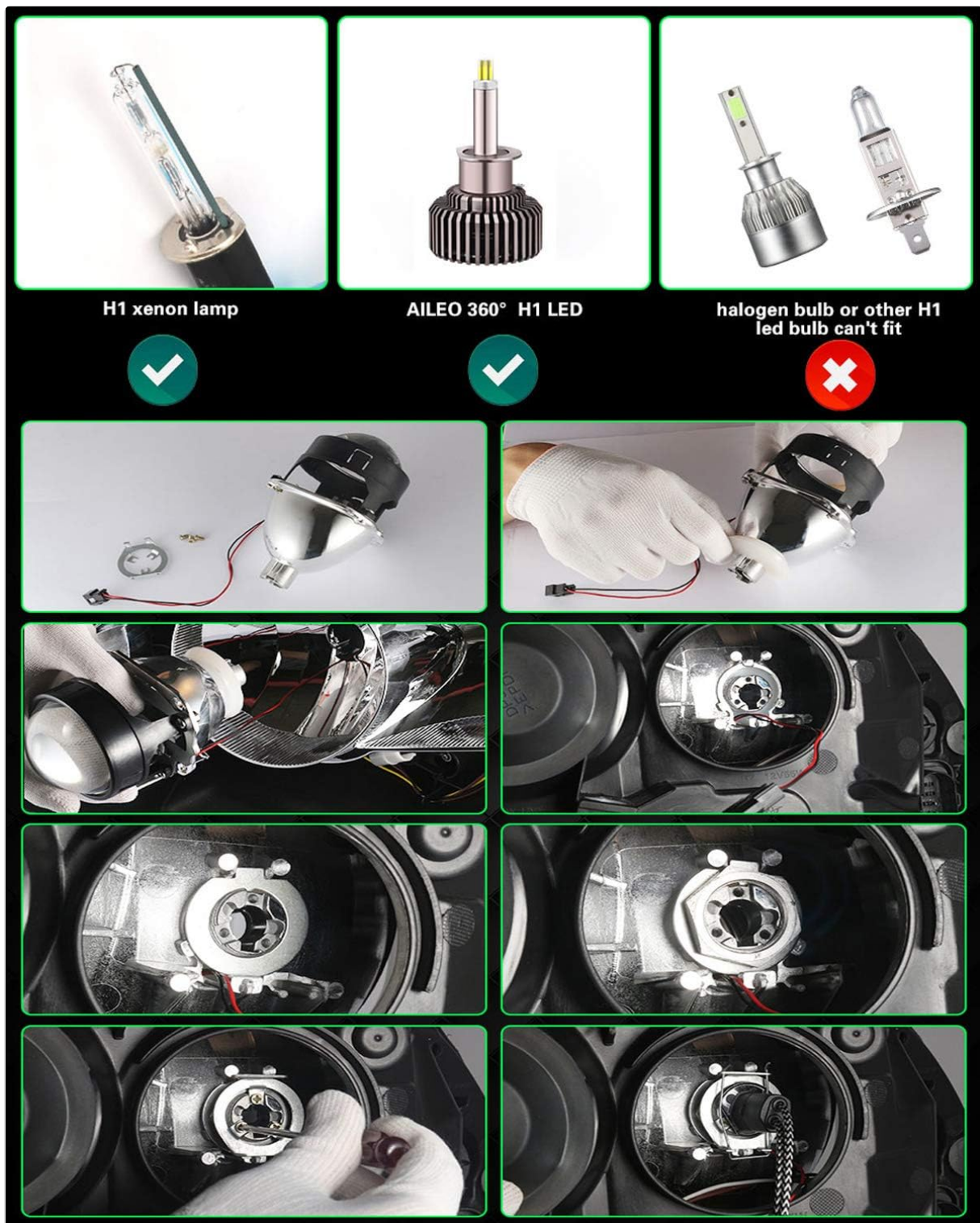


Figure 3: Compatible H1 bulb types.

This diagram illustrates that H1 Xenon lamps and AILEO 360° H1 LED bulbs are compatible, while standard H1 halogen bulbs and other H1 LED bulbs are not.

## 5. INSTALLATION

Installation of the AILEO Bi-Xenon Projector Lens requires opening the vehicle's headlamp assembly. Due to the complexity and potential need for modifications, **professional installation is highly recommended**

### General Installation Steps (Consult a professional or detailed vehicle-specific guides):

1. **Preparation:** Ensure the vehicle's power is off and the headlights are cool. Gather necessary tools.
2. **Headlight Removal:** Carefully remove the headlight assembly from the vehicle.
3. **Headlight Disassembly:** Heat the headlight assembly to soften the sealant and carefully separate

the lens from the housing.

4. **Original Reflector Removal:** Remove the existing reflector or projector from the headlight housing.
5. **Projector Lens Installation:** Mount the AILEO 2.5 inch Bi-Xenon Projector Lens into the headlight housing using the provided adapters (H4, H7, or universal fasteners) and rubber spacers. Ensure a secure fit.
6. **Bulb Insertion:** Insert the compatible H1 Xenon or LED bulb into the projector lens.
7. **Wiring:** Connect the wiring for the projector's solenoid (for high beam function) and the LED Angel Eyes (if applicable) to the vehicle's electrical system.
8. **Testing:** Before sealing, test the low beam, high beam, and Angel Eyes functionality. Adjust the projector for proper beam alignment.
9. **Reassembly:** Reseal the headlight assembly and reinstall it into the vehicle.

*Note: Install H8, H9, H11, 9005 (HB3), or 9006 (HB4) using the universal installation fasteners.*



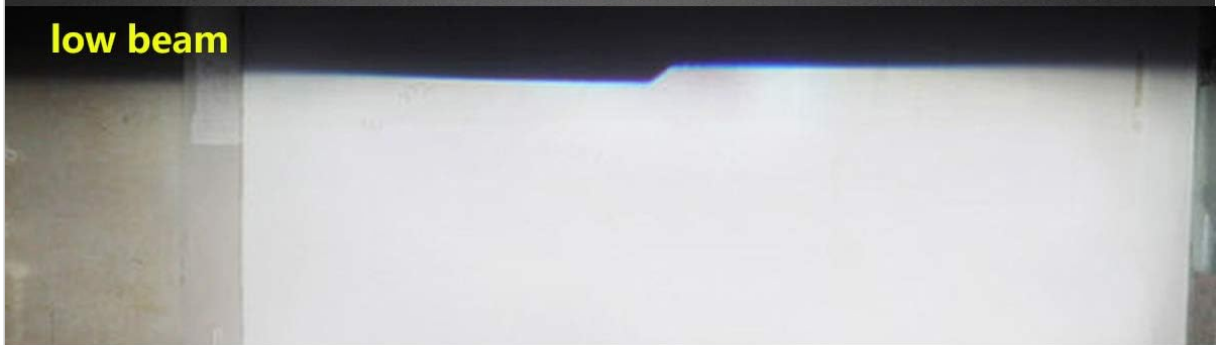
*Figure 4: Projector lens components and wiring.*

This image shows the projector lens, the H1 bulb socket, and the wiring for the bi-xenon function, highlighting the plug-and-play nature for high and low beam control.

# PRODUCT SIZE



**low beam**



**high beam**



Figure 5: H1 bulb installation steps.

A visual guide demonstrating the process of inserting and securing an H1 bulb into the projector lens assembly.

For a visual guide on the installation process, refer to this video:

Your browser does not support the video tag.

Video 1: This video demonstrates the installation process of a 2.5 inch projector lens car headlight retrofit kit, showing the steps involved in upgrading your vehicle's lighting.

## 6. OPERATING INSTRUCTIONS

The AILEO Bi-Xenon Projector Lens operates in two primary modes:

- **Low Beam:** By default, the projector provides a uniformly lit low beam pattern, designed to illuminate the road ahead without causing glare to oncoming drivers.

- **High Beam:** When the vehicle's high beam function is activated, the projector's solenoid engages, exposing more light through the lens to provide a full, extended high beam with a greater range of light.
- **LED Angel Eyes (DRL):** The integrated LED Angel Eyes function as Daytime Running Lights, enhancing the vehicle's presence during daylight hours.



*Figure 6: Improved light output with projector lenses.*

This image visually compares the light distribution on a road with standard headlights versus headlights equipped with projector lenses, demonstrating the improved focus and reduced scatter provided by the projector lenses.

## 2.5 PROJECTOR LENS

Crafted to ensure the greatest light projection without any dark spots. The Arc-Beam lens casts light more focused than any other headlights.



Figure 7: Product dimensions and beam patterns.

This image provides the dimensions of the 2.5-inch projector lens and illustrates the distinct cut-off line of the low beam and the broader illumination of the high beam.

### Demonstration Videos:

Observe the low beam and high beam functionality of a similar projector lens:

Your browser does not support the video tag.

Video 2: Demonstration of low beam and high beam functionality from a projector lens. This video shows the sharp cut-off of the low beam and the expanded light output when the high beam is activated.

View the light output and switching speed of a similar projector lens:

Your browser does not support the video tag.

Video 3: This video demonstrates the low beam and high beam effects, showcasing the clarity and quick switching response of the projector lens.

## 7. MAINTENANCE

To ensure optimal performance and longevity of your projector lenses:

- **Regular Cleaning:** Keep the outer surface of the projector lens clean from dirt and debris. Use a soft cloth and a mild cleaning solution.

- **Inspect Wiring:** Periodically check all wiring connections for any signs of wear, corrosion, or looseness.
- **Bulb Replacement:** If using HID bulbs, replace them as a pair to maintain consistent light output. Follow the bulb manufacturer's instructions for replacement.
- **Professional Inspection:** Consider having your lighting system professionally inspected annually to ensure proper alignment and function.

## 8. TROUBLESHOOTING (FREQUENTLY ASKED QUESTIONS)

---

**Q: Can I install an H4 bulb to this projector lens?**

A: No, this projector lens can only install standard H1 xenon bulbs and AILEO 360° series H1 LED bulbs. It is not compatible with H1 Halogen bulbs or other socket bulbs.

**Q: My headlight uses an H4 bulb, can this projector lens fit it?**

A: Yes, this projector lens can fit H4, H7, H11, H8, H9, 9005 (HB3), and 9006 (HB4) headlight housings. It comes with H4 and H7 adapters, and universal adapters for other compatible housings.

**Q: Should I install an LED bulb, Xenon HID Bulb, or Halogen bulb?**

A: This projector lens is compatible with xenon HID bulbs (H1 Xenon Kit is recommended) and H1 LED bulbs (AILEO 360° H1 LED Bulb is recommended). It cannot install H1 Halogen bulbs.

## 9. WARRANTY AND SUPPORT

---

AILEO is committed to customer satisfaction. If you encounter any problems with your product, please contact us for assistance. We are dedicated to helping resolve any issues you may experience.

For further support or inquiries, please refer to the contact information provided with your purchase or visit the official AILEO store page on Amazon: [AILEO Store](#).