

[Manuals.plus](#) /

> [Osmo](#) /

> [Osmo Math Wizard and the Magical Workshop for iPad: Addition & Subtraction Instruction Manual](#)

Osmo 902-00060

Osmo Math Wizard and the Magical Workshop for iPad: Addition & Subtraction Instruction Manual

Model: 902-00060

For ages 6-8 (Grades 1-2)

INTRODUCTION

The Osmo Math Wizard and the Magical Workshop is an interactive learning game designed to teach addition and subtraction to children aged 6-8 (Grades 1-2). This system combines physical game pieces with digital gameplay on an iPad or Fire Tablet, providing a hands-on approach to mathematical concepts. The game offers real-time feedback and adapts to the child's pace, fostering confidence in a stress-free environment. An Osmo Base and a compatible iPad or Fire Tablet are required for gameplay and are sold separately.



Image: The Osmo Math Wizard game combines digital gameplay with physical pieces for an engaging learning experience.

WHAT'S IN THE BOX

Your Osmo Math Wizard and the Magical Workshop package includes the following components:

- Mixing Mat (Double-Sided Number Bond Playmat)

- 2 Sticker Sheets
- Spell Book
- 28 Counting Cubes
- 6 Counting Rods (useful for place value & regrouping)
- 1 Game App: Math Wizard Magical Workshop (digital download)



Image: All physical components included in the Osmo Math Wizard and the Magical Workshop set.

SETUP INSTRUCTIONS

Follow these steps to set up your Osmo Math Wizard game:

1. **Ensure you have an Osmo Base and a compatible iPad or Fire Tablet.** These are required for gameplay and are not included in this package.
2. **Download the Math Wizard Magical Workshop app.** Search for "Osmo Math Wizard Magical Workshop" in your device's app store.
3. **Place your iPad or Fire Tablet into the Osmo Base.** Ensure it is securely seated.
4. **Place the red reflector over the device's camera.** This allows the Osmo system to "see" the physical game pieces.
5. **Follow the on-screen instructions** within the app to begin the game and calibrate if necessary.

6. **Use the physical components** (Mixing Mat, counting cubes, counting rods, spell book) as guided by the app to play the game.

How it Works



1

**Put your device
in the base.**



2

**Put the reflector
over the camera.**



3

**Play pieces in
front are seen!**

works with iPad and Fire Tablet

Image: Visual guide for setting up your Osmo device and game.



Requires Osmo Base* + tablet to play

*Purchase separately

Curriculum-inspired*



Image: The Osmo Base and tablet are essential for playing the Math Wizard game.

COMPATIBILITY

The Osmo Math Wizard and the Magical Workshop is compatible with specific iPad and Fire Tablet models. An Osmo Base is required for all compatible devices.

iPad Compatibility:

- Compatible with all iPads except: iPad (1st–4th gen), iPad Air (1st gen), iPad mini (1st–3rd gen).
- Requires iOS 15 or later.
- Newer iPad models in development include: iPad mini 7, iPad Air 11" M2, iPad Air 13" M2, iPad Pro 11" M4 (5th generation), and iPad Pro 13" M4.
- *Note: A 2021 Reflector for iPad may be required for some models and is sold separately.*

Fire Tablet Compatibility:

- Fire HD 8 (8th & 10th Gen)
- Fire HD 10 (9th & 11th Gen)
- Fire HD 8 (12th Gen)
- *Note: A 2021 Reflector for Fire Tablet may be required for some models and is sold separately. Fire 7*

(2022) is not compatible.

Osmo Compatibility

iPad®

iPad (Gen 5–9)	iPad Pro 9.7" & 10.5"
iPad Mini (Gen 4–5)	iPad Pro 11" (Gen 1–3)*
iPad Mini (Gen 6)*	iPad Pro 12.9" (Gen 1–2)
iPad Air (Gen 2–3)	iPad Pro 12.9" (Gen 3–5)*
iPad Air 4–5*	

*2021 Reflector for iPad Required. Sold Separately.

iPad models released in the Fall of 2022 are not currently compatible; compatibility coming later in 2023: iPad 10th Gen, iPad Pro 11" (4th Gen), and iPad Pro 12.9" (6th Gen).

fire tablets

Fire HD 8 (8th & 10th Gen**)
Fire HD 10 (9th & 11th Gen**)
Fire HD 8 (12th Gen**)

**2021 Reflector for Fire Required. Sold Separately.

Fire 7 (2022) will not be made compatible with Osmo products.

Image: Detailed compatibility chart for Osmo products with iPad and Fire Tablets.

OPERATING INSTRUCTIONS

Once the Osmo Base and app are set up, you can begin playing. The game is self-paced and guides children through various activities.

1. **Launch the Math Wizard Magical Workshop app** on your compatible device.
2. **Select a game mode or adventure.** The app will guide you through the story and challenges.
3. **Interact with the physical game pieces** (Mixing Mat, counting cubes, counting rods) as prompted by the on-screen instructions. The Osmo system uses the reflector to recognize your actions with the physical pieces.
4. **Brew potions in the "Potions" game** by using number bonds to add and subtract.
5. **Help dragons fly in "Dragon Drop"** by mastering place value with balloons.
6. **Engage in "Card Duel"** to practice greater than and less than equations.
7. **Adjust difficulty:** Adults can adjust the game's difficulty level within the app settings to match the child's skill level.
8. **No WiFi is necessary for gameplay** once the app is downloaded.



Learn and Practice Addition & Subtraction

Image: A child learning and practicing addition and subtraction with the Osmo Math Wizard game.



Learn at your own pace!



Image: The Osmo Math Wizard game allows children to learn at their own pace.



Image: A child interacting with the Osmo Math Wizard game, using physical pieces to solve on-screen challenges.

Your browser does not support the video tag.

Video: Official Osmo Math Wizard - Magical Workshop overview, demonstrating gameplay and features.

SKILLS LEARNED

This game is designed to develop and reinforce several key mathematical skills for 1st and 2nd graders:

- Adding & Subtracting within 20 using mental math
- Adding & Subtracting within 100
- Counting & Place Value
- Comparing Numbers
- Regrouping
- Understanding Two-Digit Numbers
- Understanding the relationship between addition (+) and subtraction (-)
- Algebraic Thinking
- Number Bonds



Image: Focus on addition and subtraction skills.

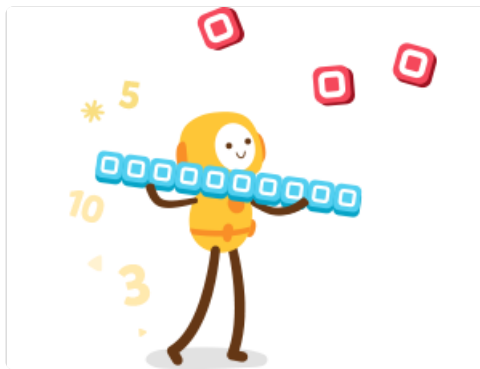


Image: Focus on place value concepts.

Your browser does not support the video tag.

Video: Introduction to the Math Wizard series, highlighting the five different games and their learning objectives.

SPECIFICATIONS

Brand	Osmo
Model Number	902-00060
UPC	850001161886, 850034854571
Age Range	6-8 years (Grades 1-2)
Educational Objective	Addition & Subtraction, Number Bonds, Place Value, Comparing Numbers, Hands-on Learning
Number of Players	1-2
Power Source	No batteries required (for physical pieces)
Operation Mode	Manual (with digital interaction)
Indoor/Outdoor Usage	Indoor
Assembly Required	No
Material Type	Plastic
Item Weight	0.7 Kilograms
Item Dimensions	2.13 x 8.9 x 10.24 inches

SAFETY INFORMATION

This product is designed with safety in mind and is not considered a choking hazard for its intended age group (6-8 years). Always supervise young children during play to ensure proper use of all components.

MAINTENANCE

To ensure the longevity of your Osmo Math Wizard components:

- Keep physical game pieces clean and dry. Wipe with a soft, damp cloth if necessary.
- Store all components in their original box or a designated storage area to prevent loss or damage.
- Ensure the iPad/Fire Tablet screen and the Osmo reflector are clean for optimal game recognition.
- Regularly check for app updates to ensure the best performance and access to new features.

TROUBLESHOOTING

If you encounter issues with your Osmo Math Wizard game, consider the following:

- **Game not recognizing pieces:**
 - Ensure the red reflector is correctly placed over the device's camera.
 - Check that the play area in front of the device is well-lit and clear of obstructions.
 - Clean the device screen and the reflector if smudges are present.
 - Verify that your device is compatible and running the latest version of the Osmo app.
- **App performance issues:**
 - Close other apps running in the background on your device.
 - Restart the Osmo app or your device.
 - Ensure your device's operating system is up to date.
- **Missing components:**
 - Refer to the "What's in the Box" section to confirm all items were received. Contact Osmo customer support if components are missing.

WARRANTY INFORMATION

Osmo provides a **90-Day Warranty Against Manufacturer Defects** for the Math Wizard and the Magical Workshop product. Please retain your proof of purchase. For warranty claims or further details, refer to the official Osmo website or contact their customer support.

CUSTOMER SUPPORT

For additional assistance, technical support, or inquiries regarding your Osmo Math Wizard and the Magical Workshop, please visit the official Osmo support website or contact their customer service team.

You can often find FAQs and troubleshooting guides online.

Official Osmo Website: www.playosmo.com

Your browser does not support the video tag.

Video: General Osmo video highlighting the fun and educational aspects of their learning system.

