

- › [EMAX](#) /
- › [EMAX ESP10V080V3PK Air Compressor and Dryer Bundle User Manual](#)

EMAX ESP10V080V3PK

EMAX ESP10V080V3PK Air Compressor and Dryer Bundle User Manual

Comprehensive instructions for setup, operation, and maintenance.

INTRODUCTION

This manual provides essential information for the safe and efficient operation of your EMAX ESP10V080V3PK 10 HP 80 Gallon Oil-Lube Stationary Air Compressor with 115V 7.2 Amp Refrigerated Corded Air Dryer Bundle. This industrial-grade system is designed for commercial and industrial applications, offering high performance and durability. Proper installation, operation, and maintenance are crucial for maximizing the lifespan and efficiency of your equipment.



Figure 1: The EMAX ESP10V080V3PK 10 HP 80 Gallon Oil-Lube Stationary Air Compressor with its accompanying Refrigerated Air Dryer.

SAFETY INFORMATION

Always observe the following safety precautions to prevent injury and equipment damage. This equipment operates under high pressure and with high voltage electricity.

- **Read the Manual:** Before operating, read and understand all instructions and warnings in this manual.
- **Electrical Safety:** Ensure the compressor and dryer are connected to a properly grounded electrical supply matching the specified voltage (115V or 460V, 3-Phase). Disconnect power before performing any maintenance or service.
- **Pressure Safety:** Never exceed the maximum operating pressure of the compressor or any attached tools/hoses. Always wear appropriate eye protection when operating.

- **Ventilation:** Operate the compressor in a well-ventilated area to prevent heat buildup and ensure proper air intake.
- **Maintenance:** Perform all maintenance as scheduled. Do not attempt repairs beyond your capability. Consult qualified personnel for complex issues.
- **Moving Parts:** Keep hands, hair, and clothing clear of moving parts, such as the belt and fan.
- **Proposition 65 Warning:** This product may expose you to chemicals known to the State of California to cause cancer and birth defects or other reproductive harm.

SETUP AND INSTALLATION

1. Unpacking and Inspection

Carefully remove the compressor and dryer from their packaging. Inspect both units for any shipping damage. Report any damage to your supplier immediately.

2. Placement

Place the compressor and dryer on a firm, level surface capable of supporting their combined weight (approximately 1073 pounds). Ensure adequate clearance around the units for ventilation and maintenance access. Avoid placing in direct sunlight or near heat sources.

3. Electrical Connection

The EMAX ESP10V080V3PK requires a 3-phase electrical supply, configurable for either 115 Volts or 460 Volts. Consult a qualified electrician for proper wiring and connection to ensure compliance with local electrical codes and safety standards. The system includes industrial TEFC electric motors and magnetic starters.



Figure 2: Example of an electrical connection component (Hubbell box) on the compressor.

4. Initial Checks

- **Oil Level:** Verify the oil level in the compressor pump. The pump is pressure lubricated. Refer to the sight glass or dipstick for correct levels.
- **Belt Tension:** Check the tension of the drive belt. The unit features a belt tensioner for easy adjustment. Ensure the belt is properly aligned and tensioned according to manufacturer specifications.



Figure 3: The belt tensioner mechanism, designed for easy adjustment.

5. Connecting the Air Dryer

Connect the refrigerated air dryer to the compressor's air outlet. Ensure all connections are secure and leak-free. The dryer is designed to remove moisture, oil, and dirt from the compressed air, improving air quality and protecting downstream equipment. Note that hydraulic hoses or connection lines are not included in this bundle.

OPERATION

1. Starting the Compressor

After ensuring all connections are secure and initial checks are complete, turn on the main power switch for the compressor. The compressor will begin to build pressure in the 80-gallon ASME tank (rated for 200 PSI). The unit delivers 38 CFM at 100 PSI, with a top PSI of 175.

2. Pressure Adjustment

Adjust the pressure regulator to the desired output pressure for your application. Always ensure the set pressure does not exceed the maximum rating of your air tools or accessories.

3. Continuous Run Function

The EMAX compressor features a continuous run option. To activate this, locate and engage the continuous run valve. This function allows the compressor to run continuously, maintaining a consistent air supply for demanding applications.

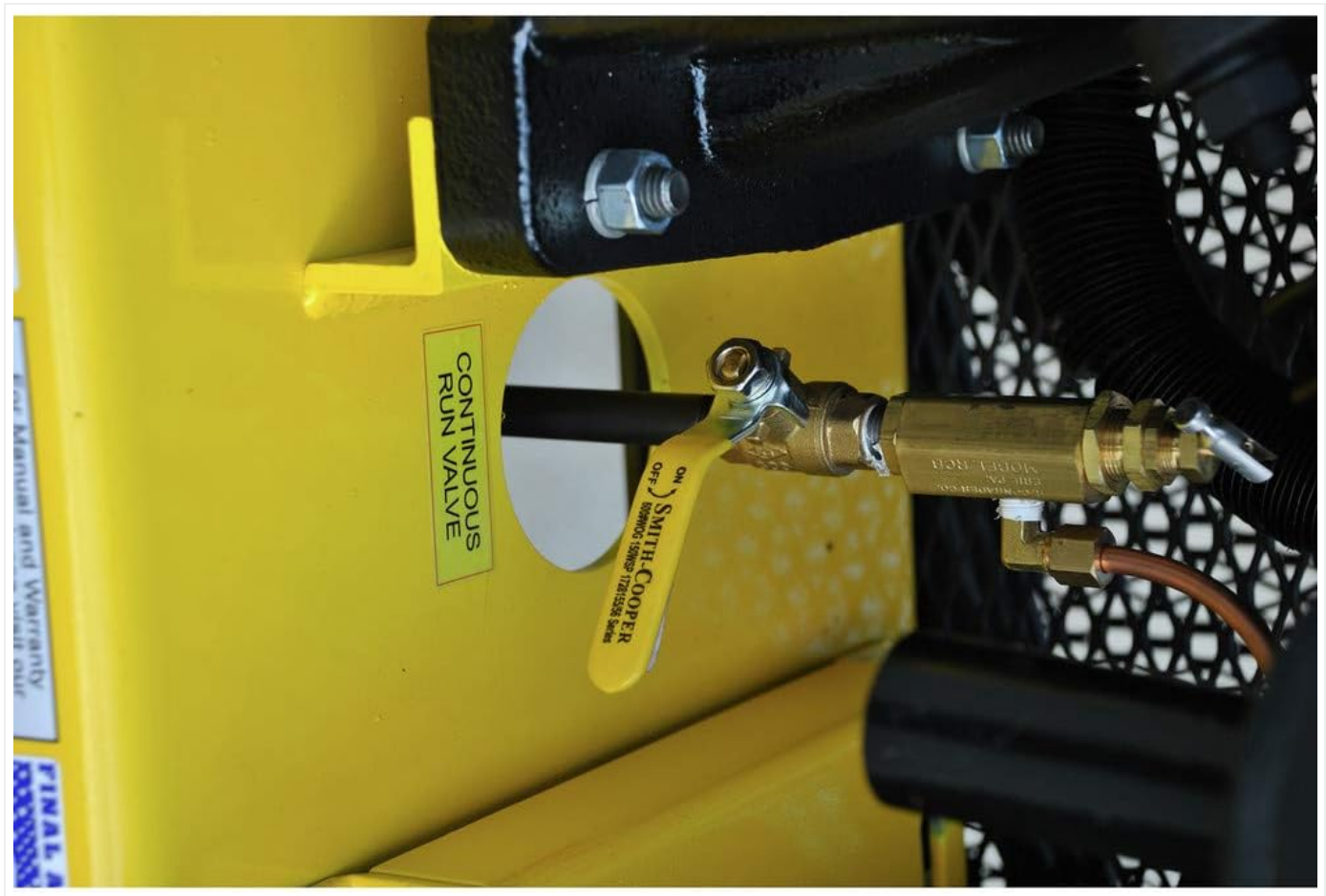


Figure 4: The continuous run valve, allowing for uninterrupted operation.

4. Air Dryer Operation

The 58 CFM refrigerated air dryer operates automatically to remove moisture. Monitor the filter change indicator on the dryer's control panel. A change in the indicator's color or position signals that the coalescing filters require attention or replacement.



Figure 5: Air dryer control panel with filter change indicator.

MAINTENANCE

Regular maintenance is essential for the longevity and optimal performance of your EMAX air compressor and dryer bundle. Always disconnect power before performing any maintenance.

1. Daily/Weekly Checks

- **Drain Tank:** The compressor features an automatic tank drain. Verify its proper operation to ensure condensate is regularly removed from the air tank.
- **Oil Level:** Check the compressor pump oil level. Add oil if necessary, using only recommended compressor oil.
- **Air Filter:** Inspect the compressor's air intake filter. Clean or replace if dirty to ensure proper airflow and prevent contamination.

2. Monthly/Quarterly Checks

- **Belt Tension and Condition:** Inspect the drive belt for wear, cracks, or fraying. Adjust tension using the belt tensioner if needed.
- **Air Dryer Filters:** Replace the coalescing filters in the refrigerated air dryer as indicated by the filter change indicator or according to the dryer's maintenance schedule.
- **General Cleaning:** Keep the compressor and dryer clean and free of dust and debris to ensure proper cooling and operation.



Figure 6: Internal components of the refrigerated air dryer, including filters.

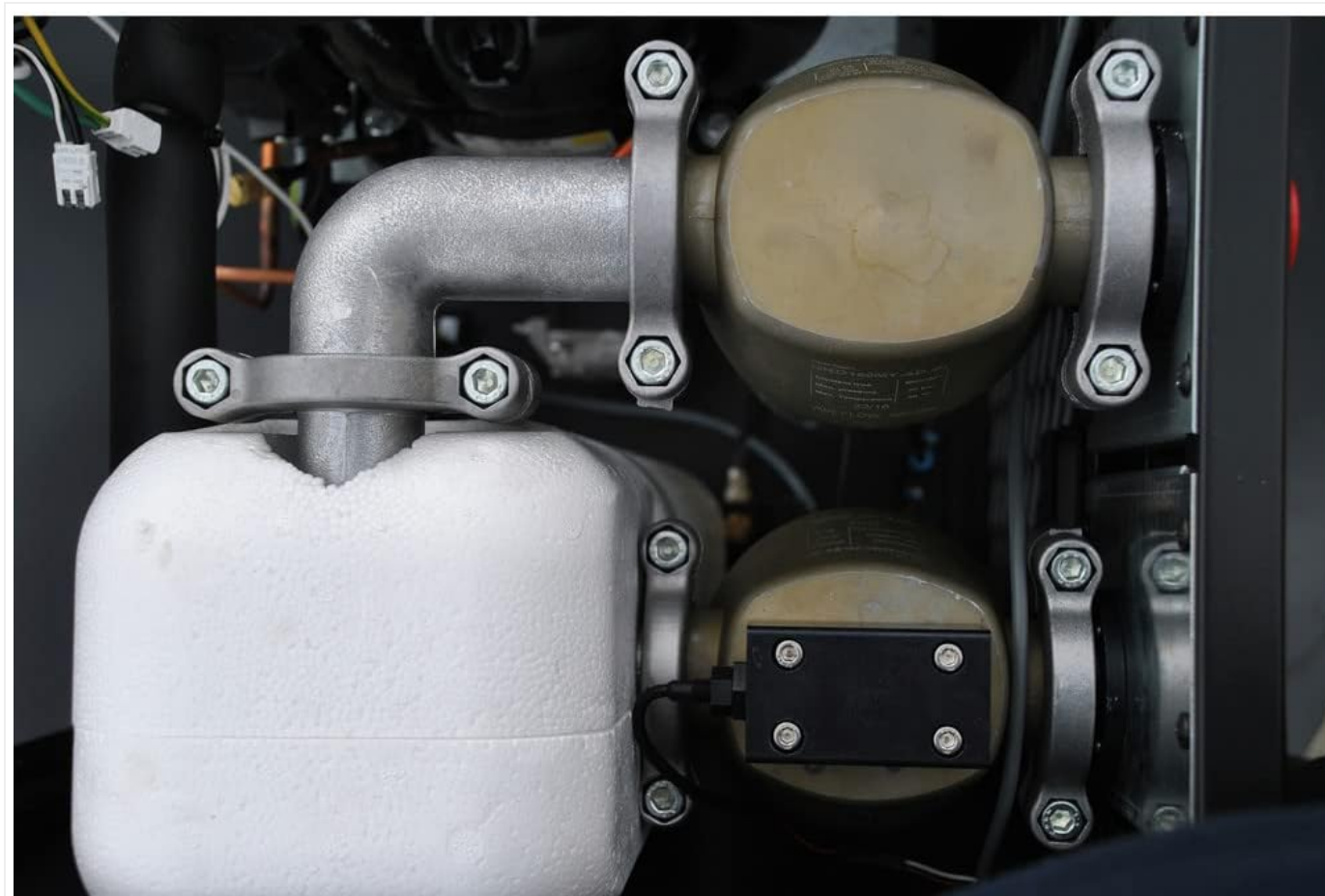


Figure 7: Detailed view of the air dryer's internal filtration and cooling system.

TROUBLESHOOTING

This section provides solutions to common operational issues. For problems not listed or if solutions do not resolve the issue, contact EMAX customer support.

Problem	Possible Cause	Solution
Compressor does not start	No power supply; tripped circuit breaker; faulty motor.	Check power connection and circuit breaker. Consult an electrician if motor is suspected faulty.
Low air pressure output	Air leaks; clogged air filter; worn piston rings.	Check all air connections for leaks. Clean or replace air filter. Contact service for internal component issues.
Excessive noise or vibration	Loose components; worn bearings; improper belt tension.	Inspect and tighten all fasteners. Check belt tension and condition. Consult service for internal component wear.
Air dryer not removing moisture	Clogged filters; refrigerant issue; improper ambient temperature.	Check and replace coalescing filters. Ensure proper ventilation around dryer. Contact service for refrigerant issues.

SPECIFICATIONS

Feature	Detail
Brand	EMAX
Model Name	ESP10V080V3PK
Motor Horsepower	10 HP
Compressor Capacity	80 Gallons
Air Flow Capacity (Dryer)	58 CFM
Compressor Air Delivery	38 CFM @ 100 PSI
Maximum Pressure	175 PSI
Voltage	115 Volts, 460 Volts (3-Phase)
Power Source	Electric-powered
Noise Level	35 dB (Whisper 100 silent air system)
Item Weight	1073 Pounds
Tank Rating	ASME 200PSI
Included Components	Filters
Special Features	Patented pressure lubricated pump, Continuous run option, Belt tensioner, Automatic tank drain, Industrial grade TEFC motor, Refrigerated Air Dryer with coalescing filters.
Recommended Uses	Powering Pneumatic Tools, Spraying, Air Brushing, Industrial Processes

Feature	Detail
UPC	815002014333

WARRANTY INFORMATION

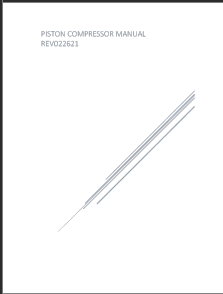
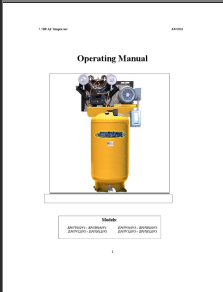

EMAX provides a **1-year warranty** on material and workmanship for the ESP10V080V3PK Air Compressor and Dryer Bundle. For detailed warranty terms and conditions, please refer to the documentation included with your product or contact EMAX customer support.


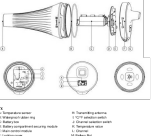

CUSTOMER SUPPORT

For technical assistance, parts, or service inquiries regarding your EMAX ESP10V080V3PK Air Compressor and Dryer Bundle, please contact EMAX customer support. Have your model number (ESP10V080V3PK) and purchase information ready when contacting support.

You can visit the official EMAX website for contact details and additional resources.[Visit the EMAX Store on Amazon](#) for more information.

Related Documents - ESP10V080V3PK

	<p>Piston Compressor Manual REV022621 - Operation, Maintenance, and Safety</p> <p>Comprehensive manual for the Piston Compressor REV022621, covering safety information, installation, operation, maintenance schedules, troubleshooting, and warranty details. Learn how to safely and effectively use and maintain your EMAX piston compressor.</p>
	<p>EMAX 7.5HP Air Compressor Operating Manual and Warranty</p> <p>Comprehensive operating manual and warranty information for the EMAX 7.5HP Air Compressor, covering installation, operation, maintenance, troubleshooting, and parts.</p>
	<p>EMAX 10HP Air Compressor Operating Manual</p> <p>Comprehensive operating manual for the EMAX 10HP Air Compressor, covering installation, operation, maintenance, and troubleshooting. Includes detailed parts lists and warranty information.</p>

 <p>EMAX ELECTRIC OPERATED, PISTON COMPRESSORS</p> <p>Operating Instructions</p> <p>EMAX Electric Operated Piston Compressors are designed for use in a variety of applications. They are built to last and are easy to maintain. They are also very quiet and efficient.</p> <p>EMAX Electric Operated Piston Compressors are available in a variety of sizes and capacities. They are also available in a variety of colors and finishes.</p> <p>EMAX Electric Operated Piston Compressors are a great choice for anyone who needs a reliable and efficient air compressor.</p>	<p>EMAX Electric Operated Piston Compressors: Operating Instructions, Specifications, and Safety</p> <p>This document provides comprehensive operating instructions, safety guidelines, detailed specifications, maintenance schedules, troubleshooting tips, and warranty information for EMAX electric operated piston air compressors.</p>
 <p>EMAX TX001 Wireless Pool Thermometer</p> <p>Operating Instructions</p> <p>The EMAX TX001 Wireless Pool Thermometer is a convenient and accurate way to monitor your pool's temperature. It features a wireless transmitter that sends temperature readings to a receiver, which can be placed in a convenient location. The thermometer also features a large, easy-to-read display and a variety of features, including a backlight and a battery indicator.</p> <p>EMAX TX001 Wireless Pool Thermometer is a great choice for anyone who wants to keep their pool at the perfect temperature.</p>	<p>EMAX TX001 Wireless Pool Thermometer User Manual</p> <p>User guide for the EMAX TX001 wireless pool thermometer, detailing its features for swimming pool temperature detection, selectable channels, and temperature display in °C/°F. Includes setup and operation instructions.</p>
 <p>EM3390 (W6) Professional Weather Station</p> <p>Operating Instructions</p> <p>The EM3390 (W6) Professional Weather Station is a comprehensive weather monitoring system. It features a variety of sensors, including a temperature sensor, a humidity sensor, a pressure sensor, a wind speed sensor, and a UV index sensor. The station also features a large, easy-to-read display and a variety of features, including a backlight and a battery indicator.</p> <p>EM3390 (W6) Professional Weather Station is a great choice for anyone who wants to monitor their weather.</p>	<p>EM3390 (W6) Professional Weather Station User Manual</p> <p>User manual for the EM3390 (W6) Professional Weather Station by Emax. This guide covers setup, features, Wi-Fi connectivity, and app integration with WeatherSense for monitoring temperature, humidity, air pressure, wind, and UV index.</p>