

[Manuals.plus](#) /

> [Xiaomi](#) /

> [Xiaomi Mi True Wireless Earbuds Basic 2 - Instruction Manual](#)

## Xiaomi Earbuds Basic 2

# Xiaomi Mi True Wireless Earbuds Basic 2 - Instruction Manual

Model: Earbuds Basic 2 | Brand: Xiaomi

## INTRODUCTION

The Xiaomi Mi True Wireless Earbuds Basic 2 offer a high-performance audio experience with advanced Bluetooth 5.0 technology. Designed for comfort and convenience, these earbuds provide seamless switching between single-ear and double-ear modes, clear call quality, and intuitive touch controls. With a lightweight design and extended battery life, they are ideal for daily use, whether for music, calls, or entertainment.



Image: The Xiaomi Mi True Wireless Earbuds Basic 2, showcasing both earbuds and their compact charging case.

## GETTING STARTED

---

### 1. Charging the Earbuds and Case

Before first use, ensure both the earbuds and the charging case are fully charged. Place the earbuds into the charging case. The indicator lights on the earbuds will show their charging status. The charging case itself can be charged using a standard micro USB cable (included). A full charge provides approximately 4 hours of continuous earbud use, with the charging case extending total battery life to about 12 hours.



Image: Top-down view of the Xiaomi Mi True Wireless Earbuds Basic 2 securely placed within their charging case.

### 2. Pairing with Your Device

1. Ensure the earbuds are in the charging case and the case lid is open.
2. On your device (smartphone, tablet, etc.), enable Bluetooth.
3. Search for available Bluetooth devices. You should see "Mi True Wireless Earbuds Basic 2" or a similar name.
4. Select the earbuds from the list to pair. Once paired, a confirmation sound will play, and the indicator lights on the earbuds will change.
5. The earbuds support seamless switching between single-ear and double-ear modes without needing to re-pair. Simply remove one earbud for mono sound, or both for stereo.

## CONTROLS AND FUNCTIONS

---

The Xiaomi Mi True Wireless Earbuds Basic 2 feature a single physical button on each earbud for easy control of various functions, designed to prevent accidental touches.

- **Play/Pause Music:** Press the button on either earbud once.
- **Answer/End Call:** Press the button on either earbud once.
- **Reject Call:** Press and hold the button on either earbud for approximately 1 second.
- **Activate Voice Assistant:** Double-press the button on either earbud. This will activate your device's voice assistant

(e.g., Siri, Google Assistant).

## COMFORT AND FIT

---

These earbuds are designed to be lightweight and comfortable for extended wear. They come with multiple sizes of silicone ear tips to ensure a secure and comfortable fit for different ear shapes. A proper fit is crucial for optimal sound quality and passive noise isolation.



Image: A Xiaomi Mi True Wireless Earbud Basic 2 comfortably seated in a person's ear, demonstrating its compact design.

## SOUND QUALITY

---

The Mi True Wireless Earbuds Basic 2 are equipped with a 7.2mm sound unit, meticulously tuned by acoustic experts to deliver balanced medium and low frequencies. Integrated DSP noise cancellation technology helps filter out ambient noise, providing crystal-clear sound for both music listening and phone calls.

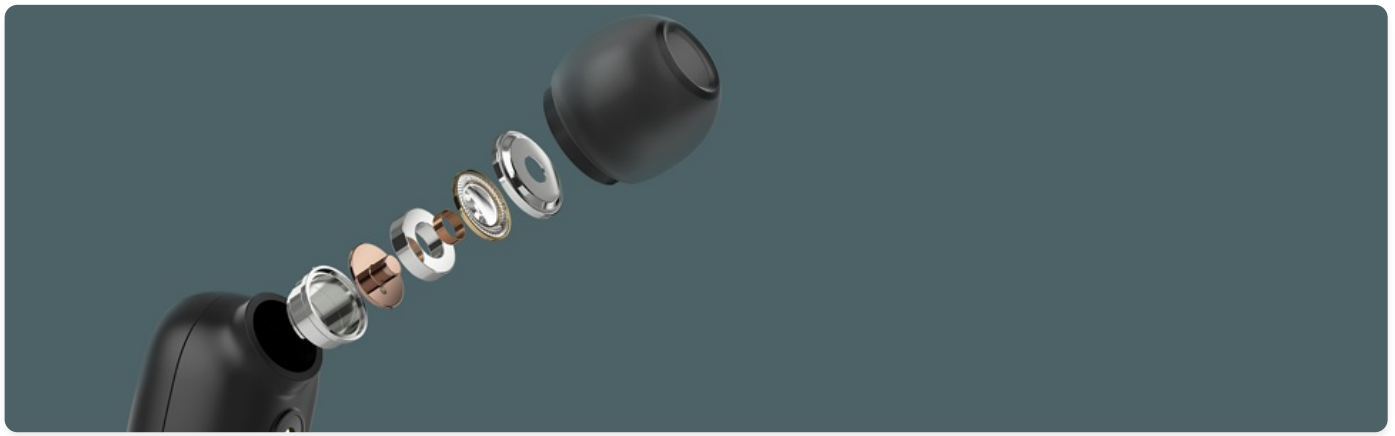


Image: An exploded diagram illustrating the internal components of a Xiaomi Mi True Wireless Earbud Basic 2, highlighting its sound unit.

## BATTERY LIFE

The earbuds provide approximately 4 hours of playback on a single charge. When used with the charging case, the total battery life extends to about 12 hours, allowing for multiple recharges on the go. The compact charging case makes it convenient to keep your earbuds powered throughout the day.

## CARE AND MAINTENANCE

To ensure the longevity and optimal performance of your Xiaomi Mi True Wireless Earbuds Basic 2, follow these care guidelines:

- Keep the earbuds and charging case clean and dry. Use a soft, dry cloth to wipe them down regularly.
- Avoid exposing the earbuds to extreme temperatures or direct sunlight for prolonged periods.
- While the earbuds are water-resistant, they are not waterproof. Avoid submerging them in water or exposing them to heavy rain.
- Store the earbuds in their charging case when not in use to protect them and keep them charged.

## SPECIFICATIONS

Feature	Detail
Model Name	Basic 2
Connectivity Technology	Wireless, Bluetooth 5.0
Battery Life (Earbuds)	Approx. 4 hours (single charge)
Battery Life (with Case)	Approx. 12 hours
Control Type	Touch Control (Physical Button)
Sound Unit	7.2mm Dynamic Driver
Noise Control	Sound Isolation, DSP Noise Cancellation
Water Resistance Level	Water Resistant
Item Weight	1.41 ounces (approx. 40 grams)
Dimensions	1.05 x 0.65 x 0.85 inches

## TROUBLESHOOTING

---

If you encounter issues with your earbuds, try the following common troubleshooting steps:

- **No Sound/Connection Issues:**

- Ensure earbuds are charged.
- Turn off and on Bluetooth on your device.
- Forget the device in your Bluetooth settings and re-pair.
- Place earbuds back in the case, close the lid, wait a few seconds, then open and try again.

- **Only One Earbud Working:**

- Ensure both earbuds are charged.
- Place both earbuds back in the charging case, close the lid, and then open it again. This often re-syncs them.
- Try resetting the earbuds (refer to official Xiaomi support for specific reset procedures if needed).

- **Poor Sound Quality:**

- Ensure the ear tips are clean and properly seated in your ears for a good seal.
- Check the audio source quality.
- Move closer to your connected device to avoid interference.

## WARRANTY AND SUPPORT

---

For detailed warranty information, technical support, or service inquiries, please refer to the official Xiaomi website or the warranty card included with your product. Keep your proof of purchase for warranty claims.

The product package includes the user manual and a charging cable/connector.