

## iPega PG-SW023

# iPega PG-SW023 Wireless Bluetooth Game Controller User Manual

Model: PG-SW023 | Brand: iPega

## 1. INTRODUCTION

Thank you for purchasing the iPega PG-SW023 Wireless Bluetooth Game Controller. This manual provides detailed instructions to help you set up, operate, and maintain your controller for an optimal gaming experience. This controller is designed for use with Nintendo Switch, PlayStation 3, Android devices, and Windows PCs (7/8/10).

## 2. SAFETY INFORMATION

- Keep the controller away from high temperatures, humidity, and direct sunlight.
- Do not expose the controller to liquids.
- Do not disassemble or attempt to repair the controller yourself. This will void the warranty.
- Use only the provided Type-C cable for charging.
- Keep out of reach of children.

## 3. PACKAGE CONTENTS

- 1 × iPega PG-SW023 Wireless Controller
- 1 × Type-C Charging Cable

- 1 × User Manual

## 4. PRODUCT OVERVIEW

---

The iPega PG-SW023 is a versatile wireless game controller designed for comfort and precision across multiple gaming platforms.



Figure 4.1: Front view of the iPega PG-SW023 Wireless Bluetooth Game Controller in blue.

### Key Features:

- **Wide Compatibility:** Suitable for Nintendo Switch, PlayStation 3, Android devices, and Windows PCs (7/8/10).

## Suitable for Games on N-S console /PS3/ Android and PC (Win 7 /8/10)



Figure 4.2: The controller's compatibility with various gaming platforms.

- **Vibration and Six-Axis Gyroscope:** Enhances gaming immersion with haptic feedback and precise motion control.
- **Macro Function:** Allows users to program complex button sequences to a single back button for ease of use.
- **Continuous Turbo Button:** Enables rapid-fire functionality for compatible games.
- **Ergonomic Design:** Provides a comfortable grip for extended gaming sessions.

# Wireless Game Controller



two motors  
vibrating



six axis  
design



high sensitive  
buttons



Turbo function

Figure 4.3: Overview of the controller's main features.

## 5. SETUP

### 5.1 Charging the Controller

Before first use, fully charge the controller. Connect the provided Type-C cable to the controller's charging port and the other end to a USB power source (e.g., computer USB port, USB wall adapter). The charging indicator lights will show the charging status. A full charge takes approximately 2 hours.

### 5.2 Pairing with Devices

The controller uses Bluetooth 3.0 for wireless connection. The transmission distance is up to 8 meters.

#### 5.2.1 Pairing with Nintendo Switch

1. On your Nintendo Switch, go to the HOME Menu.

2. Select 'Controllers' > 'Change Grip/Order'.
3. Press and hold the pairing button on the iPega controller until the indicator lights start flashing rapidly.
4. Once successfully paired, the indicator light will become solid.

### 5.2.2 Pairing with PlayStation 3 (PS3)

1. Connect the controller to the PS3 console using the Type-C cable.
2. Press the 'HOME' button on the controller.
3. Once the controller is recognized, unplug the cable. The controller should now be wirelessly connected.

### 5.2.3 Pairing with Android Devices

1. Enable Bluetooth on your Android device.
2. On your Android device, search for available Bluetooth devices.
3. Press and hold the pairing button on the iPega controller until the indicator lights start flashing rapidly.
4. Select 'PG-SW023' from the list of found devices to pair.
5. Once successfully paired, the indicator light will become solid.

### 5.2.4 Pairing with PC (Windows 7/8/10)

1. Ensure your PC has Bluetooth enabled.
2. Go to 'Bluetooth & other devices' settings on your PC.
3. Click 'Add Bluetooth or other device' > 'Bluetooth'.
4. Press and hold the pairing button on the iPega controller until the indicator lights start flashing rapidly.
5. Select 'PG-SW023' from the list of found devices to pair.
6. Once successfully paired, the indicator light will become solid.

## 6. OPERATING INSTRUCTIONS

---

### 6.1 Basic Controls

The controller features standard gaming buttons, joysticks, and a D-pad. Familiarize yourself with the layout for optimal gameplay.

### 6.2 Six-Axis Gyroscope Function

The built-in six-axis gyroscope provides precise motion control, enhancing the gaming experience in titles that support motion sensing.

# Six Axis Gyroscope Design

Built-in six axis chips,give you better body feeling and target accurately

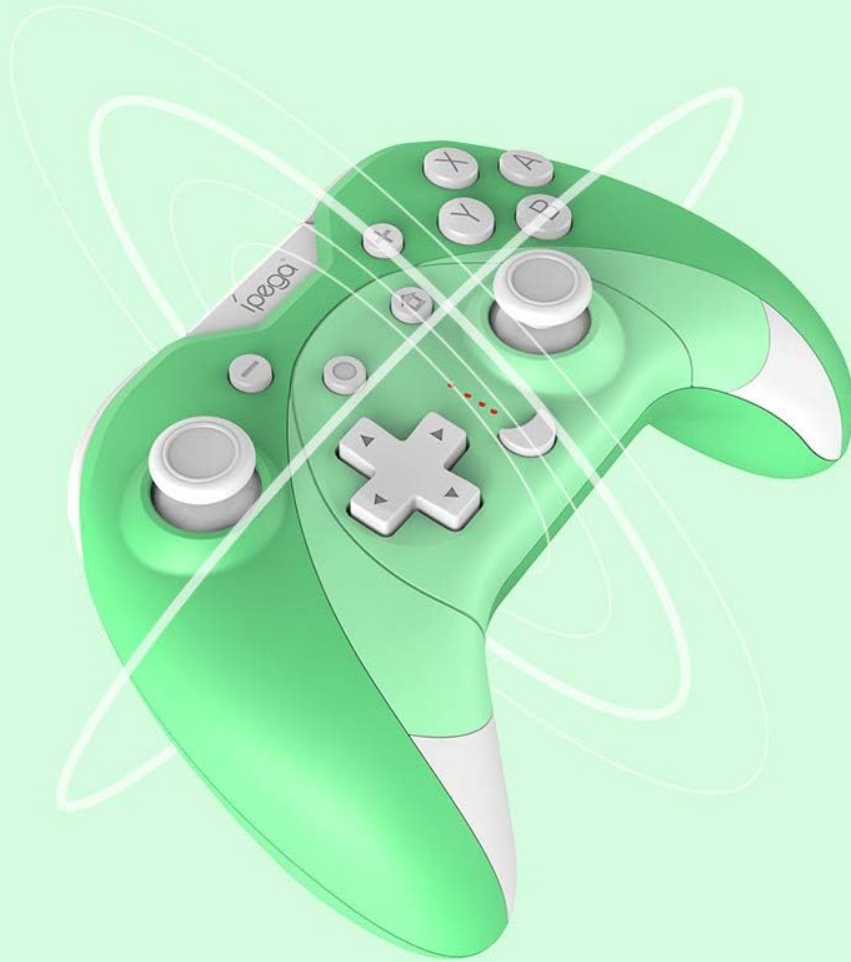


Figure 6.1: Illustration of the six-axis gyroscope functionality.

## 6.3 Macro Function

The controller includes programmable back buttons that can be assigned macro functions. This allows you to record a sequence of button presses and execute them with a single press of the macro button. Refer to the specific instructions in the included user manual for detailed macro programming steps.

## 6.4 Turbo Function

The Turbo button enables continuous rapid-fire for specific action buttons. This can be particularly useful in games requiring fast, repeated inputs.



# Auto Fire with Turbo Button

Continuous auto fire, you feel not tired when gaming



Figure 6.2: The Turbo button feature for continuous auto-fire.

To activate Turbo: Press and hold the desired action button (e.g., A, B, X, Y) and then press the Turbo button. To deactivate, repeat the process.

## 7. MAINTENANCE

- **Cleaning:** Use a soft, dry cloth to clean the controller. Do not use abrasive cleaners or solvents.
- **Storage:** Store the controller in a cool, dry place away from direct sunlight and extreme temperatures.
- **Battery Care:** If not used for an extended period, charge the controller at least once every three months to maintain battery health.

## 8. TROUBLESHOOTING

---

### 8.1 Controller Does Not Turn On

- Ensure the controller is fully charged. Connect it to a power source using the Type-C cable.

### 8.2 Unable to Pair Controller

- Ensure the controller is in pairing mode (indicator lights flashing rapidly).
- Make sure Bluetooth is enabled on your device.
- Move the controller closer to the device.
- Remove any previous pairings of the controller from your device's Bluetooth settings and try pairing again.
- Restart both the controller and your device.

### 8.3 Input Lag or Disconnections

- Ensure there are no strong electromagnetic interferences nearby.
- Move closer to the device.
- Ensure the controller is fully charged. Low battery can affect connection stability.

## 9. SPECIFICATIONS

---

Feature	Specification
Brand	iPega
Model	PG-SW023
Operating Voltage	DC 3.7V
Operating Current	<30mA
Static Current	<20uA
Continuous Play Time	Approx. 15 hours
Input Voltage/Current	DC 5V/500mA
Charging Duration	Approx. 2 hours
Bluetooth Version	3.0



Feature	Specification
Transmission Distance	≤8 meters
Battery Capacity	400mAh
Product Dimensions	15 x 10 x 5.5 cm (5.91 x 3.94 x 2.17 inches)
Product Weight	Approx. 215g (7.58 ounces)
Compatible Devices	Playstation 3, Android, Nintendo Switch, PC (Windows 7/8/10)
Connectivity Technology	Wireless (Bluetooth)
Special Features	Wireless, Comfortable, Vibration, Six-Axis Gyroscope, Macro Function, Turbo Function

© 2023 iPega. All rights reserved.

**Related Documents - PG-SW023**

--	--





iPega PG-9156 Bluetooth Gamepad with Smartphone Holder - User Manual

Detailed user manual for the iPega PG-9156 Bluetooth Gamepad, covering specifications, product overview, connection instructions for Android, iOS, PC, PS3, and Nintendo Switch, charging, and turbo mode features.



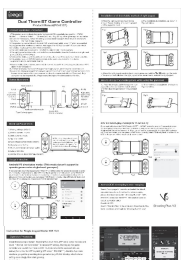
[iPega PG-9069 Bluetooth Gamepad with Touchpad User Manual](#)

Comprehensive user manual for the iPega PG-9069 Bluetooth Gamepad, detailing its features, setup, operation modes for Android, iOS, and PC, and advanced functions like Macro and Turbo.



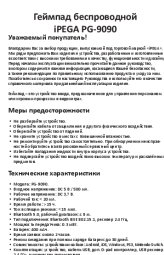
## iPega Wolverine Bluetooth Game Controller (PG-9099) User Manual

User manual for the iPega Wolverine Bluetooth Game Controller (PG-9099), detailing setup, operation, features, and troubleshooting for Android, iOS, and Windows devices.



## iPega PG-9167 Dual Thorn BT Game Controller Manual &amp; Setup Guide

Comprehensive user manual for the iPega PG-9167 Dual Thorn Bluetooth Game Controller. Learn about setup, modes, button mapping, TURBO function, and compatibility for Android, iOS, PC, PS3, and Nintendo Switch.



[Беспроводной геймпад iPEGA PG-9090: Руководство пользователя и технические характеристики](#)

Подробное руководство пользователя для беспроводного геймпада iPEGA PG-9090. Узнайте о мерах предосторожности, технических характеристиках, способах подключения к Android, iOS, ПК и Nintendo Switch, а также о функциях TURBO и переназначении кнопок. Включает информацию о гарантии и производителе.