

manuals.plus /

- › [EMKE](#) /
- › [EMKE 24 x 32 Inch LED Bathroom Vanity Mirror User Manual](#)

EMKE B08GP9WCT3

EMKE LED Bathroom Vanity Mirror User Manual

Model: B08GP9WCT3

INTRODUCTION

Thank you for choosing the EMKE LED Bathroom Vanity Mirror. This manual provides essential information for the safe installation, operation, and maintenance of your new mirror. Please read these instructions thoroughly before installation and keep them for future reference.



Image: EMKE LED Bathroom Vanity Mirror, showcasing its design and illumination.

SAFETY INFORMATION

WARNING: To reduce the risk of burns, fire, electric shock, or injury to persons, install this mirror according to these instructions. Always disconnect power at the circuit breaker before installation or servicing. This product is intended for indoor use only.

- Ensure all electrical connections comply with local codes and ordinances.
- Do not modify the mirror or its electrical components.
- Keep packaging materials away from children.
- Handle the mirror with care to prevent breakage.

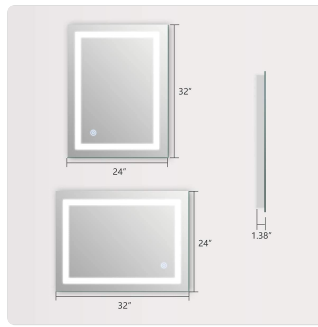


Image: A yellow warning triangle with an exclamation mark, symbolizing general caution.

PRODUCT FEATURES

- **Dimmable LED Lighting:** Adjust brightness from 10% to 100%.
- **Adjustable Color Temperature:** Select between 3000K (Warm Light), 4500K (Natural Light), and 6000K (White Light).
- **High Color Rendering Index (CRI 90+):** Provides accurate color reflection.
- **IP44 Waterproof Rating:** Suitable for humid bathroom environments.
- **Memory Function:** Retains your last brightness setting.
- **Copper-free and Mercury-free Silver Mirror:** Ensures clear reflections and environmental safety.
- **Flexible Installation:** Can be mounted horizontally or vertically.

Enhanced Lighting Experience

Copper-free and mercury-free silver mirrors provide HD reflections



OURS
CRI > 90

OTHERS
CRI < 90

Image: A visual comparison demonstrating the enhanced color accuracy of a mirror with CRI > 90 compared to one with CRI < 90.

Safe And Energy Saving

Bright, Durable and Low Cost Save 80% energy than standard bulbs. Our LED lights have a longer life.



More Durable

Silicone protective cover wraps the led light belt



IP44 Waterproof

Ensure safety lighting in a humid bathroom environment

Image: Details highlighting the durable silicone protective cover for the LED light belt and the IP44 waterproof rating of the power supply, ensuring safety in humid conditions.

Your browser does not support the video tag.

Video: An official product video demonstrating various features and applications of the EMKE LED Bathroom Vanity Mirror.

SETUP AND INSTALLATION

This mirror can be installed either horizontally or vertically. Professional installation is recommended for electrical wiring.

Mounting Steps:

1. **Prepare the Wall:** Mark the desired position for the mirror. Ensure the wall can support the mirror's weight (approximately 20.3 lbs).
2. **Drill Holes:** Drill holes at the marked positions for the mounting screws. Insert wall anchors if necessary.
3. **Secure Mounting Plate:** Attach the mounting plate to the wall using the provided screws.
4. **Electrical Connection:** Connect the mirror's electrical wires to your household wiring. Ensure power is off at the circuit breaker before making connections. Consult a qualified electrician if you are unsure.

5. **Hang the Mirror:** Carefully hang the mirror onto the mounting plate, ensuring it is securely seated.

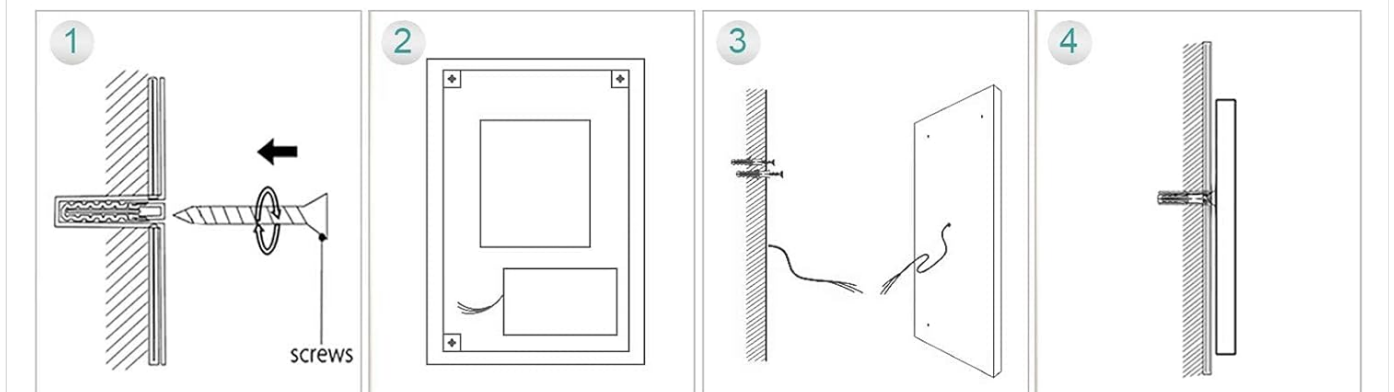


Image: A visual guide illustrating both horizontal and vertical mounting options, along with a four-step diagram for securing the mirror to the wall.

OPERATING INSTRUCTIONS

Touch Switch Operation:

- **Power On/Off:** Double-tap the touch switch to turn the light on or off.
- **Adjust Color Temperature:** Short press the touch switch to cycle through color temperatures: 6000K (White Light), 4500K (Natural Light), and 3000K (Warm Light).
- **Adjust Brightness:** Long press the touch switch to adjust the brightness continuously from 10% to 100%. Release when the desired brightness is reached.

Wall Switch Recommendation:

For convenience, it is recommended to connect the mirror to a wall switch to control the light and defogger (if applicable) ON/OFF. The mirror's internal memory function will retain your last brightness setting when powered off via a wall switch.

Short Press The Touch Switch To Adjust Color Temperature.



White Light

6000K



Natural Light

4500K



Warm Light

3000K



Single Touch

Long Press To Adjust Brightness.



10%



50%



100%



Press and hold

Image: Instructions on how to use the touch switch for adjusting color temperature (short press) and brightness (long press).

Wall Switch Recommended

Using wall switch to turn the mirror light and defogger ON/OFF.

*Switch is not included in the scope of supply



Memory function

Remember your personal brightness settings for the led mirror



Image: Illustration recommending the use of a wall switch for controlling the mirror light and defogger, and highlighting the mirror's memory function for brightness settings.

MAINTENANCE

To maintain the mirror's appearance and functionality, follow these cleaning guidelines:

- Always disconnect power before cleaning.
- Use a soft, damp cloth with a mild glass cleaner.
- Avoid abrasive cleaners, solvents, or harsh chemicals that may damage the mirror surface or electrical components.
- Wipe dry immediately with a clean, lint-free cloth to prevent water spots.

TROUBLESHOOTING

Problem	Possible Cause	Solution
---------	----------------	----------

Problem	Possible Cause	Solution
Mirror light does not turn on.	No power supply; loose wiring; faulty touch switch.	Check circuit breaker. Ensure all wiring connections are secure. Contact customer support if the touch switch is unresponsive.
Light flickers or is dim.	Low voltage; faulty LED driver.	Verify power supply voltage. Contact customer support for LED driver replacement.
Touch switch is unresponsive.	Power issue; sensor malfunction.	Ensure power is connected. Try cycling power at the circuit breaker. If issue persists, contact customer support.

SPECIFICATIONS

Feature	Detail
Model Number	B08GP9WCT3
Dimensions	24"L x 32"W (or 32"L x 24"W)
Thickness	1.38 inches (35mm)
Color Temperature	3000K-6500K (Adjustable)
Brightness	10%-100% (Dimmable)
CRI	90+
Waterproof Rating	IP44
Material	Copper-free, silver-backed mirror
Item Weight	20.3 pounds
Mounting Type	Wall Mount (Horizontal/Vertical)

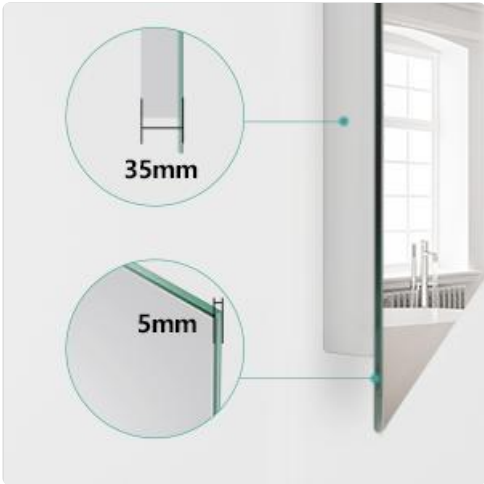


Image: Detailed dimensions of the mirror, including length, width, and thickness.

WARRANTY AND SUPPORT

EMKE products are manufactured to high-quality standards. For warranty information or technical support, please refer to the

warranty card included with your purchase or contact EMKE customer service directly. Please have your model number (B08GP9WCT3) and purchase date available when contacting support.

For further assistance, visit the [EMKE Store on Amazon](#).