

Manuals+

[Q & A](#) | [Deep Search](#) | [Upload](#)

Manuals.plus /

- › [Lifelong](#) /
- › Lifelong LLPCM17 Ace Pro Rechargeable Hair Clipper User Manual

Lifelong LLPCM17

Lifelong LLPCM17 Ace Pro Rechargeable Hair Clipper User Manual

Model: LLPCM17

1. INTRODUCTION

Thank you for choosing the Lifelong LLPCM17 Ace Pro Rechargeable Hair Clipper. This manual provides essential information for the safe and effective use, maintenance, and troubleshooting of your new grooming device. Please read it thoroughly before first use and retain it for future reference.

2. PRODUCT OVERVIEW & WHAT'S IN THE BOX

The Lifelong LLPCM17 Ace Pro is designed for precise hair and beard trimming. Its ergonomic design and advanced features ensure a comfortable and efficient grooming experience.



Figure 1: Lifelong LLPCM17 Ace Pro Hair Clipper

Package Contents:

- 1 x Lifelong LLPCM17 Ace Pro Hair Clipper Unit
- 6 x Guide Combs (3mm, 6mm, 9mm, 12mm, Left Precision, Right Precision)
- 1 x USB Charging Cable
- 1 x Cleaning Brush
- 1 x Lubricating Oil Bottle
- 1 x User Manual

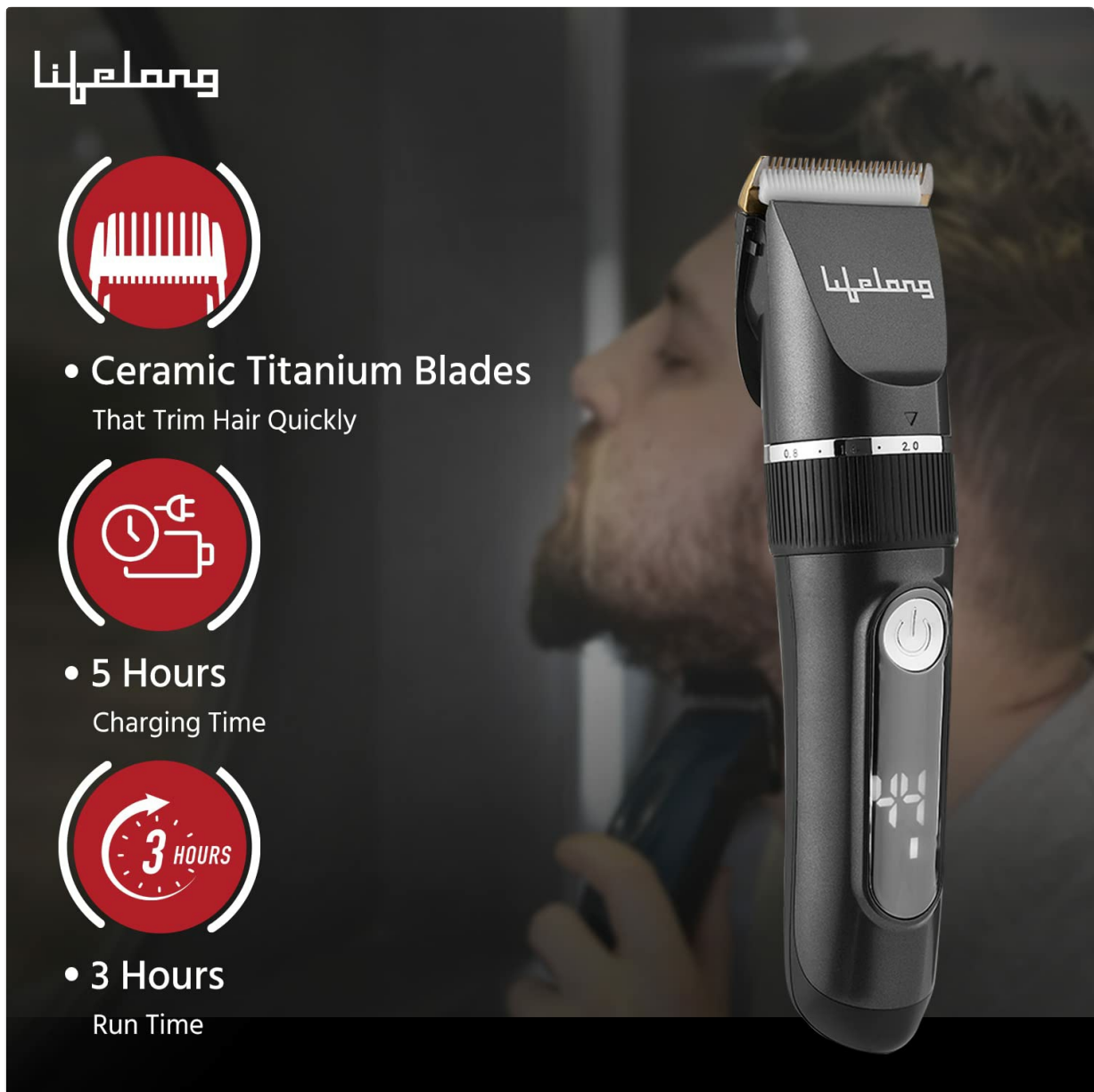


Figure 2: Hair Clipper with all accessories

3. KEY FEATURES

- **Digital LED Display:** Shows battery status (low, empty, full, or charging) for convenient monitoring.
- **Long Runtime:** Provides up to 3 hours of cordless operation after a 5-hour charge.
- **IPX7 Waterproof:** Allows for quick and easy cleaning under running water.
- **Multiple Speed Options:** Offers complete control over hair styling with adjustable speed settings.
- **Titanium Ceramic Blades:** Durable and sharp blades for efficient and precise cutting.
- **Precision Adjuster:** Integrated dial for fine-tuning blade length without guide combs.
- **Ergonomic Design:** Lightweight and comfortable to hold for extended grooming sessions.



Figure 3: Digital LED Display and Speed Options

4. SETUP

4.1 Charging the Clipper

1. Ensure the clipper is switched off before charging.
2. Connect the small end of the USB charging cable to the charging port at the bottom of the clipper.
3. Plug the other end of the USB cable into a compatible USB power adapter (not included) or a computer's USB port.
4. The digital LED display will show the charging status. A full charge typically takes 5 hours, providing approximately 3 hours of runtime.

4.2 Attaching Guide Combs

The clipper comes with 6 guide combs for various hair lengths:

- 3mm, 6mm, 9mm, 12mm
- Left Precision Comb
- Right Precision Comb

To attach a comb, align the comb with the clipper blade and slide it on until it clicks into place. To remove, gently push the comb upwards from the back of the clipper.



Figure 4: Included Guide Combs

4.3 Blade Adjustment

The clipper features a precision adjuster dial located below the blade. Rotate this dial to fine-tune the cutting length of the blade when not using a guide comb. This allows for precise trimming and detailing.

5. OPERATING INSTRUCTIONS

5.1 Powering On/Off

Press the power button once to turn the clipper on. Press it again to cycle through speed settings. To turn off, press and hold the power button for a few seconds.

5.2 Speed Settings

The clipper offers multiple speed settings. Press the power button repeatedly to switch between the available speeds. The digital display will indicate the current speed level.

5.3 Hair & Beard Trimming

1. Select the appropriate guide comb based on your desired hair length.
2. For a closer trim or detailing, use the precision adjuster without a guide comb.
3. Hold the clipper with the blade flat against the skin and move it against the direction of hair growth.
4. Use smooth, even strokes for consistent results.
5. Regularly clean the blades during use to prevent hair buildup.

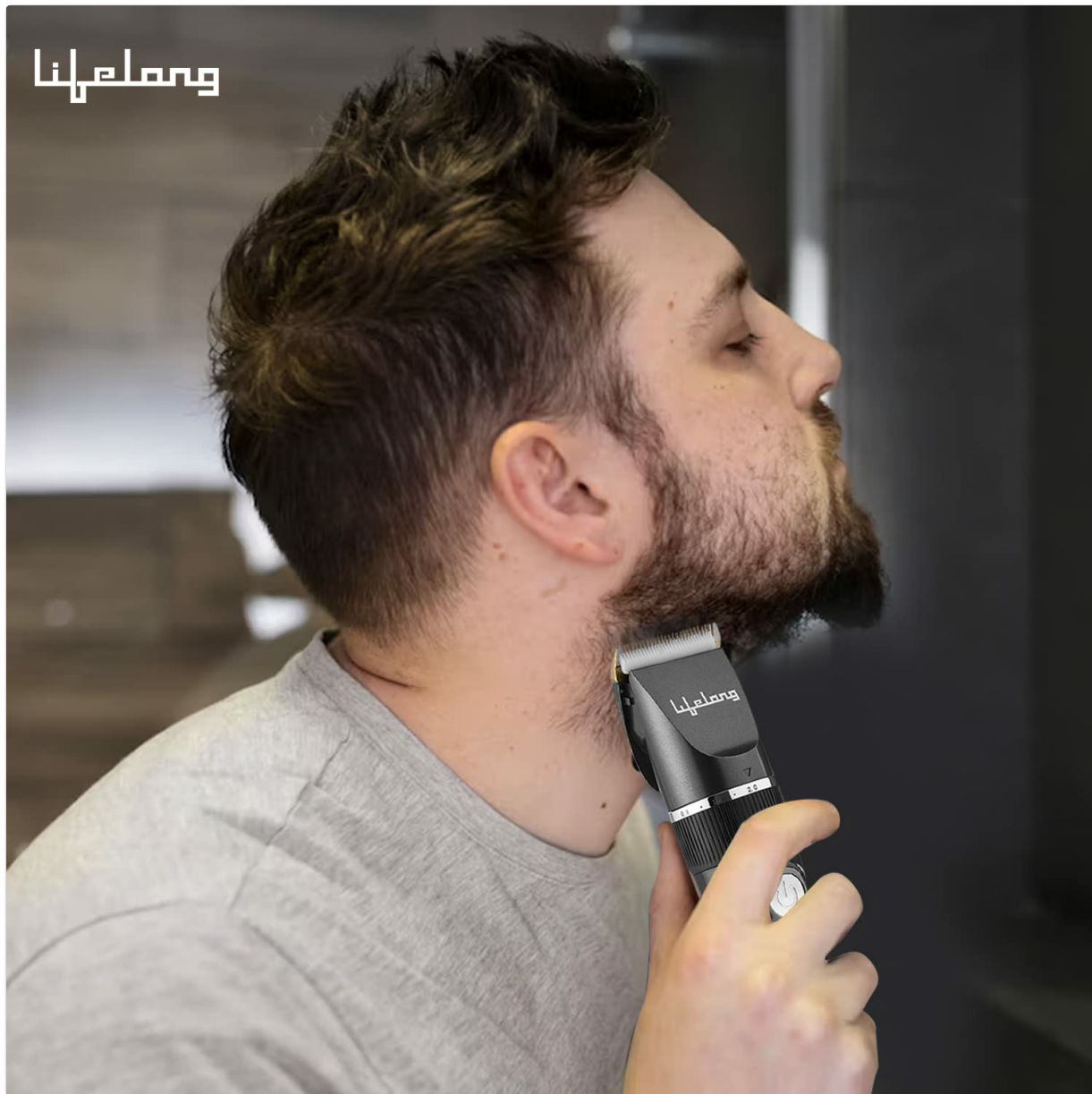


Figure 5: Using the Hair Clipper for beard trimming

Official Product Video: Features & Usage

Video 1: A short overview of the Lifelong LLPCM17 Ace Pro Hair Clipper's key features and usage.

Video 2: Another brief demonstration of the Lifelong LLPCM17 Ace Pro Hair Clipper's features.

Video 3: Detailed presentation of the Lifelong LLPCM17 Ace Pro Hair Clipper, showcasing its design, features, and practical application.

6. MAINTENANCE

6.1 Cleaning

The Lifelong LLPCM17 Ace Pro is IPX7 waterproof, allowing for easy cleaning.

1. After each use, switch off the clipper and detach any guide comb.
2. Use the provided cleaning brush to remove loose hairs from the blades and the clipper body.
3. Rinse the blade head under running water. Ensure the clipper is completely dry before storage or next use.



Figure 6: IPX7 Waterproof for easy cleaning

6.2 Lubrication

To maintain optimal performance and blade longevity, regular lubrication is essential.

1. Apply a few drops of the provided lubricating oil onto the blades after cleaning and drying.
2. Turn on the clipper for a few seconds to distribute the oil evenly.
3. Wipe off any excess oil with a soft cloth.

7. TROUBLESHOOTING

Problem	Possible Cause	Solution
Clipper does not turn on.	Low battery or no charge.	Charge the clipper fully (approx. 5 hours).
Poor cutting performance.	Blades are dull, dirty, or not lubricated.	Clean blades thoroughly and apply lubricating oil. Consider replacing blades if dull.
Clipper stops during use.	Battery is depleted or motor is overloaded.	Recharge the clipper. Ensure blades are clean and free of tangled hair.
Excessive noise or vibration.	Blades are not properly aligned or lubricated.	Check blade alignment and lubricate. If problem persists, contact customer support.

8. SPECIFICATIONS

- **Model:** LLPCM17
- **Blade Material:** Titanium Ceramic
- **Power Source:** Electric (Rechargeable)
- **Battery Type:** 1 Lithium Ion (included)
- **Charge Time:** Approximately 5 hours
- **Run Time:** Approximately 3 hours
- **Waterproof Rating:** IPX7
- **Product Dimensions (LxWxH):** 17.9 x 4.5 x 4.5 cm
- **Item Weight:** 191 g
- **Guide Combs:** 3mm, 6mm, 9mm, 12mm, Left Precision, Right Precision
- **Target Audience:** Men
- **Hair Type:** All

9. WARRANTY AND SUPPORT

9.1 Warranty Information

The Lifelong LLPCM17 Ace Pro Rechargeable Hair Clipper comes with a **1 Year Brand Warranty** from the date of purchase. Please retain your purchase receipt as proof of warranty.

9.2 Customer Support

For any queries, assistance, or warranty claims, please contact Lifelong customer support:

- **Website:** www.lifelongindiaonline.com/contact-us
- **Phone:** +91 9711558877
- **Email:** customercare@lifelongindia.com