

## Conair 910NR

# INFINITIPRO BY CONAIR SmoothWrap Hair Dryer with Diffuser

## MODEL 910NR USER MANUAL

### 1. IMPORTANT SAFETY INFORMATION

---

When using electrical appliances, especially when children are present, basic safety precautions should always be followed, including the following:

- Always unplug the appliance immediately after use.
- Do not use while bathing or in a shower.
- Do not place or store appliance where it can fall or be pulled into a tub or sink.
- Do not place in or drop into water or other liquid.
- Do not reach for an appliance that has fallen into water. Unplug immediately.
- Keep away from water.

**WARNING:** To reduce the risk of burns, electrocution, fire, or injury to persons:

- An appliance should never be left unattended when plugged in.
- Close supervision is necessary when this appliance is used by, on, or near children or individuals with certain disabilities.
- Use this appliance only for its intended use as described in this manual. Do not use attachments not recommended by the manufacturer.
- Never operate this appliance if it has a damaged cord or plug, if it is not working properly, or if it has been dropped or damaged, or dropped into water.
- Keep the cord away from heated surfaces. Do not pull, twist, or wrap cord around appliance.
- Never block the air openings of the appliance or place it on a soft surface, such as a bed or couch, where the air openings may be blocked. Keep the air openings free of lint, hair, and the like.
- Never use while sleeping.
- Never drop or insert any object into any opening.
- Do not use outdoors or operate where aerosol (spray) products are being used or where oxygen is

being administered.

- Do not use an extension cord with this appliance.
- Do not direct hot air toward eyes or other heat-sensitive areas.
- Attachments may be hot during use. Allow them to cool before handling.
- Do not place appliance on any surface while it is operating.
- While using the appliance, keep your hair out of the air inlets.

Safety warnings apply, please refer to product packaging for details.

## 2. PRODUCT OVERVIEW

The INFINITIPRO BY CONAIR SmoothWrap Hair Dryer is designed to provide an efficient and conditioning hair drying experience. It incorporates advanced technologies to help reduce frizz and enhance hair's natural body and shine.



Image: The SmoothWrap Hair Dryer shown with its concentrator and diffuser attachments.

### Key Features:

- **Advanced Plasma Technology:** Emits both positive and negative ions to rebalance the natural charge of your hair, promoting moisturized, conditioned, and smooth results with enhanced shine.

- **Ceramic Technology:** Provides even heat distribution to minimize hot spots and reduce heat damage, ensuring a consistent drying experience.
- **Multiple Heat and Speed Settings:** Features 3 heat settings and 2 speed settings, offering 6 total combinations for customized drying suitable for various hair types.
- **High-Torque DC Motor:** Delivers powerful airflow for fast drying while maintaining a lightweight design for comfortable handling.
- **Cool Shot Button:** Locks in your hairstyle with a burst of cool air.
- **Attachments:** Includes a concentrator for sleek, smooth styles and a diffuser for enhancing curls and waves.



Image: Visual representation of positive and negative ions interacting with a hair strand, illustrating the Advanced Plasma Technology.

**A New Treatment for All Hair Types**  
that focuses on maximizing a more balanced absorption of conditioning ions. The positive and negative ions bring an equilibrium to your hair, giving it volume and body with less frizz, leaving your hair feeling healthy and conditioned. Ceramic Technology minimizes heat damage for the best, healthy-looking hair.

**ions condition hair, leaving it feeling healthy & shinier**  
with Advanced Plasma Technology

**dries hair fast**  
with a lightweight, powerful, high-torque DC motor

**customize for every hair type**  
3 heat/2 speed settings

**lock your style in place**  
using the cool shot button

**increase performance life**  
with the removable filter

**for focused airflow**  
concentrator attachment included

**to create volume & curls**  
diffuser attachment included

Image: A close-up view of the hair dryer's outlet grille, showing the blue LED light that illuminates when the ion port is active.

### 3. SETUP AND ASSEMBLY

---

Before first use, ensure all packaging materials are removed and inspect the hair dryer for any visible damage.

#### **Attaching Accessories:**

Your SmoothWrap Hair Dryer comes with two styling attachments: a concentrator and a diffuser. These can be easily attached or removed as needed.

1. Ensure the hair dryer is unplugged and cool before attaching or removing accessories.
2. Align the desired attachment (concentrator or diffuser) with the nozzle of the hair dryer.
3. Gently push the attachment onto the nozzle until it is securely in place. Do not force it.
4. To remove, gently pull the attachment off the nozzle.

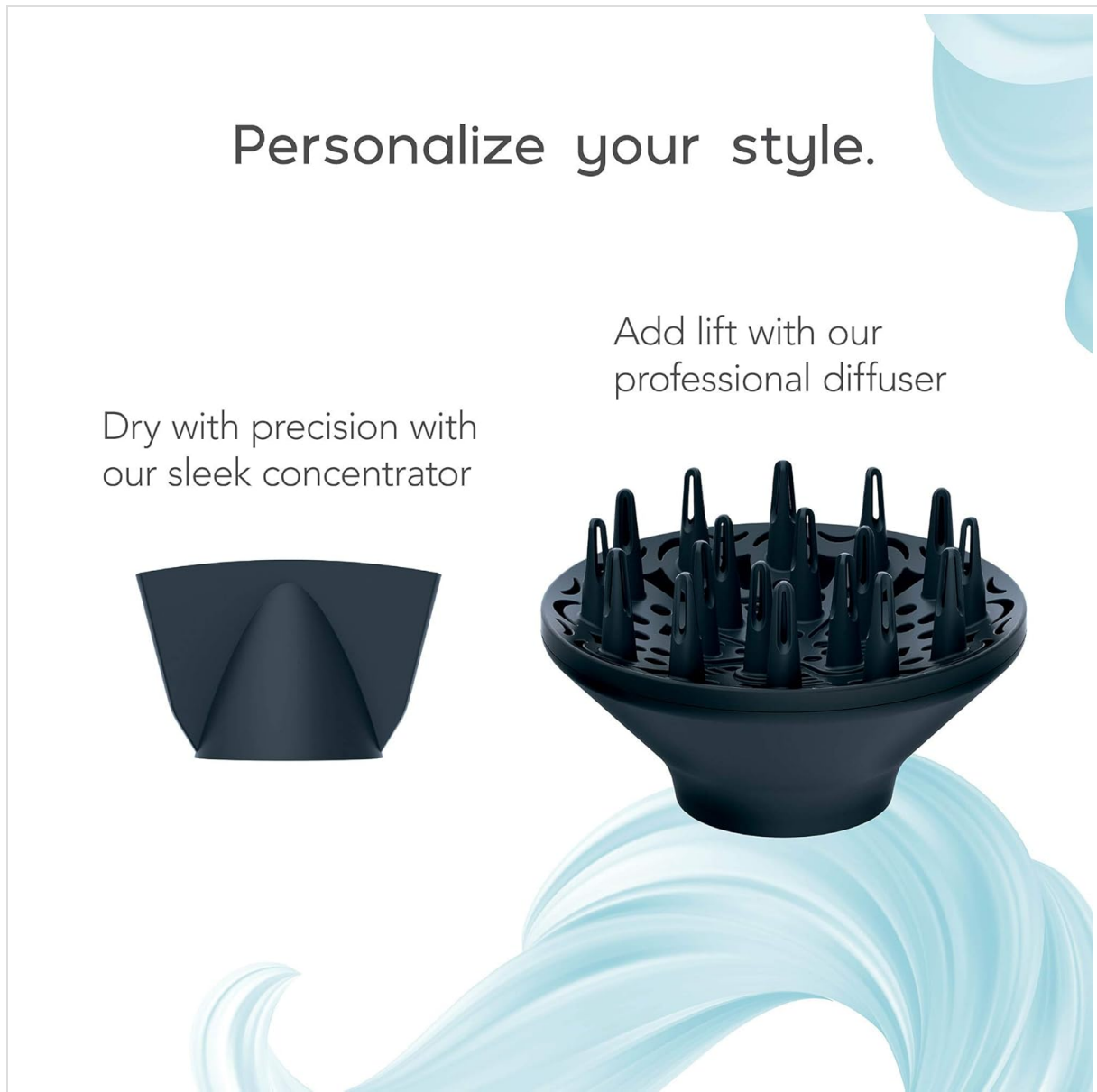


Image: The sleek concentrator and professional diffuser attachments, ready for use with the hair dryer.

### 4. OPERATING INSTRUCTIONS

---

Follow these steps for effective and safe use of your SmoothWrap Hair Dryer:

1. **Plug In:** Ensure your hands are dry, then plug the hair dryer into a standard 110V electrical outlet.
2. **Select Settings:** Use the switches on the handle to choose your desired heat and speed settings. The hair dryer offers 3 heat settings (High, Medium, Low/Cool) and 2 speed settings (High, Low).
3. **Attach Nozzle or Diffuser (if desired):** For focused airflow or curl enhancement, attach the appropriate accessory as described in the Setup section.
4. **Dry Your Hair:** Direct the airflow towards your hair, moving the dryer continuously to prevent concentrating heat in one area. Use a brush or your fingers to style as you dry.
5. **Use Cool Shot:** Press and hold the cool shot button to deliver a burst of cool air. This helps to set your style and add shine. Release the button to return to the selected heat setting.
6. **Power Off and Unplug:** Once finished, switch the hair dryer off and unplug it from the outlet. Allow the appliance to cool down before storing.

### Tips for Best Results:

- For fast drying, use high heat and high speed.
- For styling, use medium heat and low speed.
- For delicate, fine, or color-treated hair, use the low heat setting.
- When using the concentrator, direct the airflow to specific sections for smooth, sleek results.
- When using the diffuser, gently cup sections of hair in the diffuser bowl and lift towards the scalp to enhance natural curls and waves.

## 5. MAINTENANCE AND CLEANING

---

Regular maintenance ensures optimal performance and extends the life of your hair dryer.

### Cleaning the Rear Filter:

The rear filter should be cleaned regularly to prevent lint and hair buildup, which can restrict airflow and cause overheating.

1. Ensure the hair dryer is unplugged and completely cool.
2. Grip the rear filter cover and twist it counter-clockwise to unlock and remove it.
3. Use a soft brush or a vacuum cleaner to remove any accumulated lint, dust, or hair from the filter screen.
4. Replace the filter cover by aligning it and twisting clockwise until it clicks into place.

**Note:** Do not operate the hair dryer without the rear filter securely in place.

### General Cleaning:

- Wipe the exterior of the hair dryer with a soft, damp cloth. Do not use abrasive cleaners or solvents.
- Ensure no water enters the internal components.
- Clean attachments with a damp cloth and allow them to dry completely before reattaching.

## 6. TROUBLESHOOTING

---

If you encounter issues with your SmoothWrap Hair Dryer, refer to the following common problems and solutions:

Problem	Possible Cause	Solution
Hair dryer does not turn on.	No power to the outlet; tripped circuit breaker; faulty plug/cord.	Check the power outlet with another appliance. Reset the circuit breaker if necessary. Inspect the cord and plug for damage. If damaged, do not use and contact customer support.
Airflow is weak or unit overheats.	Blocked air intake filter.	Unplug the dryer and allow it to cool. Clean the rear air intake filter as described in the Maintenance section.
Attachments (concentrator/diffuser) fall off easily.	Attachment not securely fastened; wear and tear.	Ensure the attachment is pushed firmly onto the nozzle until it clicks or feels secure. If the issue persists, the attachment may be worn and require replacement.
Hair dryer is not getting hot enough.	Incorrect heat setting; internal heating element issue.	Verify the heat setting is on 'High' or 'Medium'. If the problem persists, contact customer support.

If the problem persists after attempting these solutions, please contact Conair Customer Service for further assistance.

## 7. SPECIFICATIONS

Feature	Detail
Model Number	910NR
Brand	Conair
Power Source	Corded Electric
Wattage	1875 watts
Material	Ceramic
Product Dimensions	13 x 4.25 x 10.63 inches
Item Weight	1.32 Pounds
UPC	074108428158

## 8. WARRANTY AND SUPPORT

Conair provides a limited warranty for this product. Please refer to the warranty information included with your purchase or visit the official Conair website for details regarding warranty coverage, terms, and conditions.

For customer support, service, or to inquire about replacement parts, please contact Conair Customer Service. Contact information can typically be found on the product packaging or the official Conair website.

An official User Manual (PDF) is also available for download: [Download PDF Manual](#)

