

## EZVIZ T30-B

# EZVIZ T30-B Smart Plug Instruction Manual

## 1. INTRODUCTION

The EZVIZ T30-B Smart Plug is designed to integrate seamlessly into your smart home, offering convenient control over your electronic devices. This manual provides essential information for setting up, operating, and maintaining your smart plug, ensuring safe and efficient use.

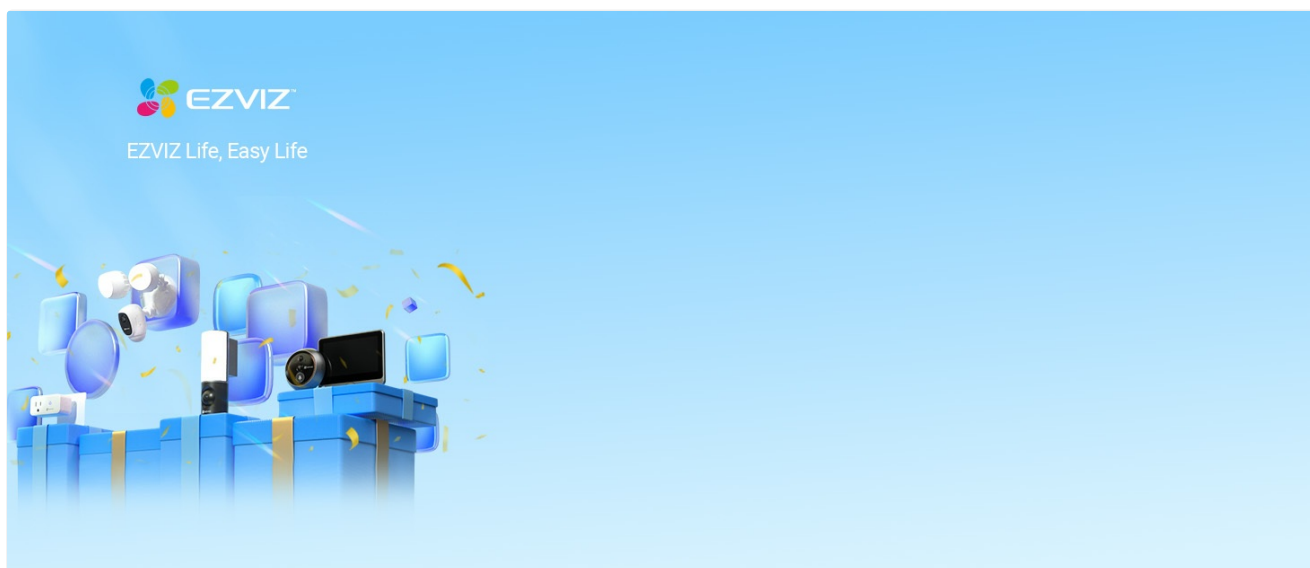


Image: The EZVIZ T30 Smart Plug, a compact white device with a power button and the EZVIZ logo, shown in a home setting.

## 2. PRODUCT FEATURES

- **Remote Control via Mobile App:** Manage connected devices from anywhere using the EZVIZ mobile application.
- **2.4 GHz Wi-Fi Support:** Connects to your home network for smart functionality.
- **Energy Usage Tracking:** Monitor real-time power consumption of plugged-in appliances to help manage electricity costs.
- **Customizable Schedules and Timers:** Automate device operation by setting specific on/off times.
- **Voice Control Compatibility:** Works with popular voice assistants like Google Home and Amazon Echo for hands-free operation.

- **Flame-Resistant Materials:** Constructed from materials designed to withstand temperatures up to 750°C for enhanced safety.
- **Controllable Indicator Light:** The LED indicator light can be turned off via the EZVIZ App for undisturbed environments.



Image: An overview of the EZVIZ T30 Smart Plug's key features, including electricity statistics, remote control, 2.4 GHz Wi-Fi, schedule & timer, 750°C flame resistance, energy saving, and voice control.

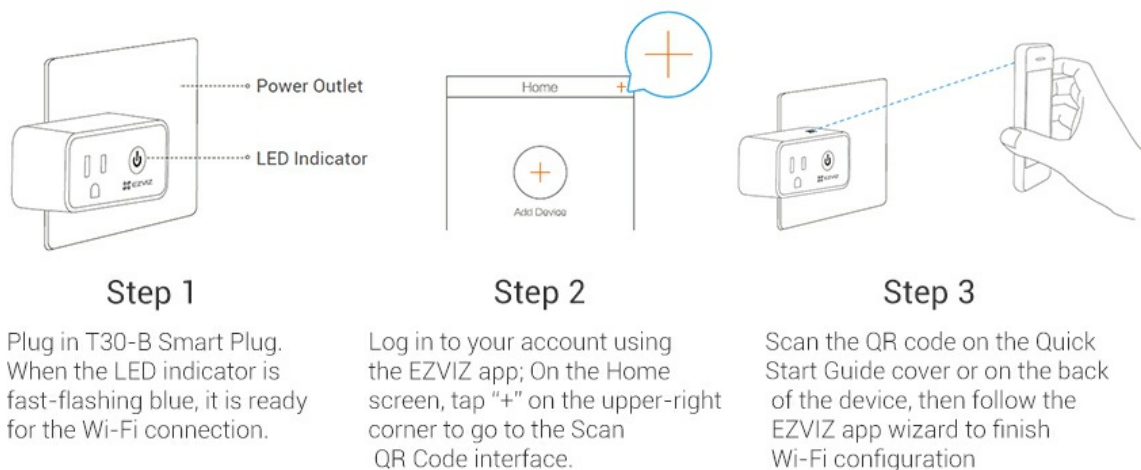
### 3. SETUP INSTRUCTIONS

Follow these steps to set up your EZVIZ T30-B Smart Plug:

1. **Step 1: Plug in the Smart Plug.** Insert the T30-B Smart Plug into a standard power outlet. The LED indicator will flash blue rapidly, indicating it is ready for Wi-Fi connection.
2. **Step 2: Log into the EZVIZ App.** Download and open the EZVIZ App on your mobile device. Log in to your existing account or create a new one.
3. **Step 3: Scan the QR Code.** On the Home screen of the app, tap the "+" icon in the upper-right corner to access the Scan QR Code interface. Scan the QR code located on the Quick Start Guide or on the back of the device. Follow the in-app wizard to complete the Wi-Fi configuration.

**Note:** The device operates on 2.4GHz Wi-Fi signals. If you have a dual-band router with separate 2.4GHz and 5GHz networks, ensure your phone is connected to the 2.4GHz network during setup.

## Simple to set up and use



Notes: The device works with 2.4GHz Wi-Fi signals.  
If you have a dual-band router with separate 2.4GHz and 5GHz networks, make sure your phone is connected to the 2.4GHz one.

Image: A visual guide illustrating the three steps for setting up the EZVIZ T30 Smart Plug: plugging it into an outlet, logging into the EZVIZ app, and scanning the QR code for Wi-Fi configuration.

## 4. OPERATING INSTRUCTIONS

### 4.1 Remote Control

Once configured, you can control the smart plug remotely via the EZVIZ App. Open the app, select your T30-B Smart Plug, and use the on/off toggle to power your connected device. This allows you to manage appliances even when you are away from home.

## Control Your Home Anytime and Anywhere

Make life a little easier by scheduling devices to turn on and off at just the right time. No more worrying about whether you left something on at home - now you can check on it remotely using your mobile device

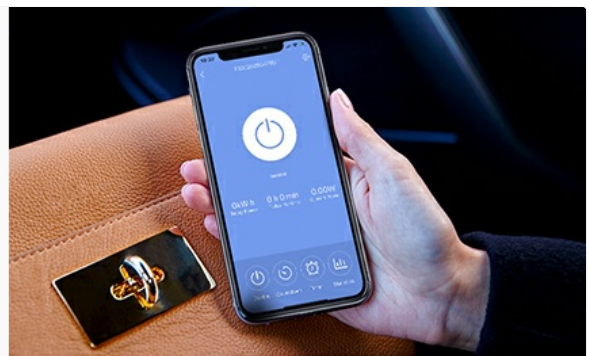


Image: A person using the EZVIZ app on a smartphone to remotely control a smart plug, demonstrating the 'Control from Anywhere' feature.

## 4.2 Scheduling and Timers

To set up schedules or timers:

1. Open the EZVIZ App and select your T30-B Smart Plug.
2. Navigate to the 'Schedule' or 'Timer' settings.
3. Set desired on/off times for specific days or create countdown timers. The smart plug will automatically follow these settings.

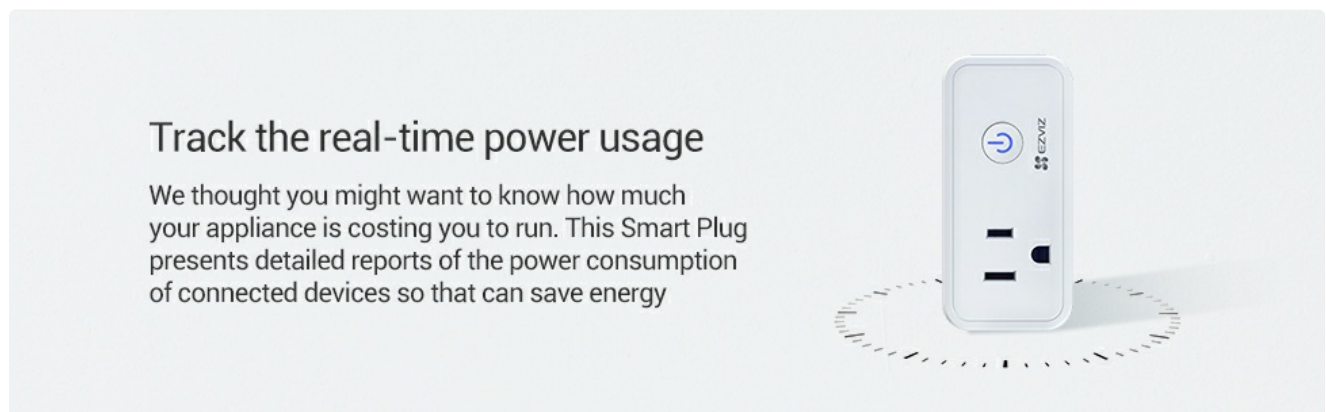


Image: A smartphone screen displaying options to customize schedules and timers for the smart plug, with examples like '08:00 AM ON' and '2:00 PM OFF'.

## 4.3 Voice Control

Integrate your smart plug with Amazon Alexa or Google Home for voice commands. Follow the instructions within your voice assistant's app to link your EZVIZ account. Once linked, you can use commands like "Hey Alexa, turn on the light!" or "Hey Google, turn on the air purifier."

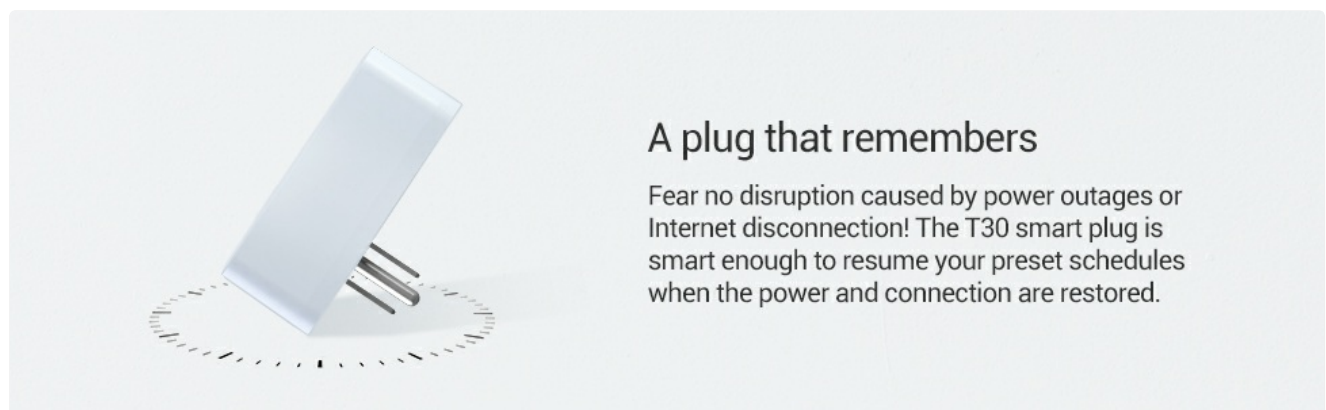


Image: Various smart speakers (Amazon Echo, Google Home) in a bedroom setting, illustrating voice control functionality with the EZVIZ Smart Plug.

## 4.4 Energy Monitoring

The EZVIZ App provides detailed reports on the power consumption of devices connected to the T30-B Smart Plug. Access the 'Statistics' section within the app to view daily, weekly, or monthly energy usage data.

## Works with voice assistants

Hands-full? No problem. Ask Google Home or Amazon Echo to turn on or off a connected device for you

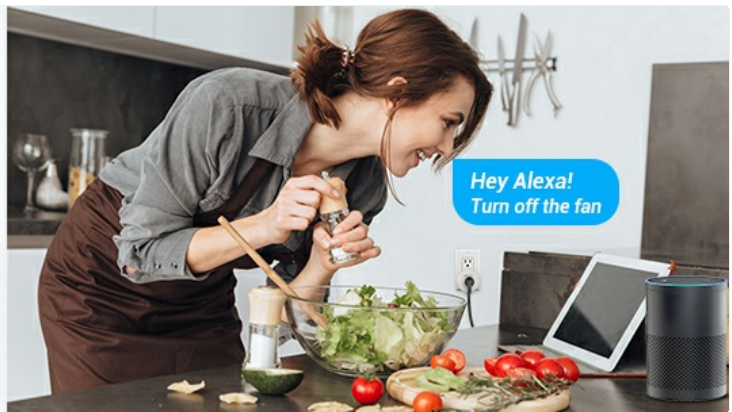


Image: A smartphone displaying energy usage statistics, showing real-time power consumption in kilowatt-hours, with a smart plug connected to an appliance in the background.

### 4.5 Indicator Light Control

If the indicator light is disruptive, you can turn it off through the EZVIZ App settings for the specific smart plug.

## 5. MAINTENANCE

To ensure optimal performance and longevity of your EZVIZ T30-B Smart Plug:

- Keep the device clean and free from dust. Use a dry, soft cloth for cleaning.
- Avoid exposing the smart plug to extreme temperatures, humidity, or direct sunlight.
- Do not attempt to disassemble or repair the device yourself. Contact customer support for assistance.

## 6. TROUBLESHOOTING

### 6.1 Connectivity Issues

- **Cannot connect to Wi-Fi:** Ensure your router is broadcasting a 2.4GHz Wi-Fi signal. During setup, your phone must be connected to the 2.4GHz network. Verify the Wi-Fi password is correct.
- **Frequent disconnections:** Check the distance between the smart plug and your Wi-Fi router. Obstacles like thick walls can interfere with the signal. Consider relocating the plug or using a Wi-Fi extender.

### 6.2 Device Not Responding

- **App control unresponsive:** Verify your mobile device has an active internet connection. Ensure the EZVIZ App is updated to the latest version.
- **Power outage/reconnection:** The T30-B Smart Plug is designed to resume its preset schedules when power and connection are restored. If a device does not automatically reconnect after a power interruption, manually press the power button on the plug or toggle it via the app.

### 6.3 Voice Assistant Issues

- **Voice commands not working:** Confirm that your EZVIZ account is correctly linked to your Amazon Alexa or Google Home account. Ensure the device name in the EZVIZ App matches the name used in your voice assistant app.

## 7. SPECIFICATIONS



Model Number	EZT3010B
Connector Type	Plug-in
Number Of Poles	3
No. of Wires	3
Plug Format	Type B
Specification Met	ETL/CETL
UPC	810042430211
Product Dimensions	2.01"D x 2.01"W x 2.01"H (4 x 2.9 x 2.9 inches)
Item Weight	3.35 ounces
Voltage	125 Volts (AC)
Material	Copper

## 8. WARRANTY AND SUPPORT

EZVIZ is committed to providing reliable products and services. For warranty information, technical support, or any inquiries regarding your T30-B Smart Plug, please refer to the official EZVIZ website or contact their customer service directly. Keep your purchase receipt for warranty claims.