

JYS NS200

JYS-NS200 Keyboard and Mouse Converter

Instruction Manual

1. INTRODUCTION

The JYS-NS200 is a versatile keyboard and mouse converter designed to enhance your gaming experience across multiple console platforms. It converts keyboard and mouse signals into controller signals, allowing you to use your preferred input devices for game operation. This manual provides detailed instructions for setup, operation, and maintenance of your JYS-NS200 converter.

2. KEY FEATURES

- Converts keyboard and mouse signals into controller signals for game operation. Requires matching the appropriate gamepad for the host console (e.g., N-SWITCH gamepad for Nintendo Switch).
- Supports Nintendo Switch, PS4, Xbox One, PS3, and Xbox 360 platforms.
- Allows custom key mapping: any keyboard or mouse key can be assigned to any controller button function, using the original gamepad as a guide.
- Designed for users who prefer keyboard and mouse input for gaming. Features a compact design for easy placement.
- Offers broad compatibility with most keyboards, mice, and third-party wired controllers. Supports firmware upgrades.
- Includes a 3.5mm audio jack for connecting headphones or headsets.

3. PRODUCT OVERVIEW

The JYS-NS200 converter features a compact design with essential ports for connecting your peripherals and console.



Image: JYS-NS200 converter with connected peripherals and console setup.



KEYBOARD AND MOUSE ADAPTER WITH 3.5 MM AUDIO JACK

3.5MM AUDIO PORT:

For connecting device that use 3.5mm audio port, enjoy surround sound and bass response, clear voice in games



Image: Front view of the JYS-NS200 converter highlighting the USB ports and 3.5mm audio jack.

Component Identification:

- **USB-A Ports (x2):** For connecting your keyboard and mouse.
- **3.5mm Audio Jack:** For connecting headphones or headsets.
- **Integrated USB Cable:** Connects the converter to your console.
- **LED Indicator:** Provides status feedback (e.g., connection status).

4. COMPATIBILITY

The JYS-NS200 converter is compatible with a wide range of gaming consoles:

- Nintendo Switch
- PlayStation 4 (PS4 / PS4 Pro / PS4 Slim)
- PlayStation 3 (PS3 / PS3 Slim)
- Xbox One (Xbox One / Xbox One S / Xbox One X)
- Xbox 360 (Xbox 360 / Xbox 360 Slim)



Image: Console compatibility overview.

5. SETUP INSTRUCTIONS

Follow these steps to connect your JYS-NS200 converter to your gaming console and peripherals.

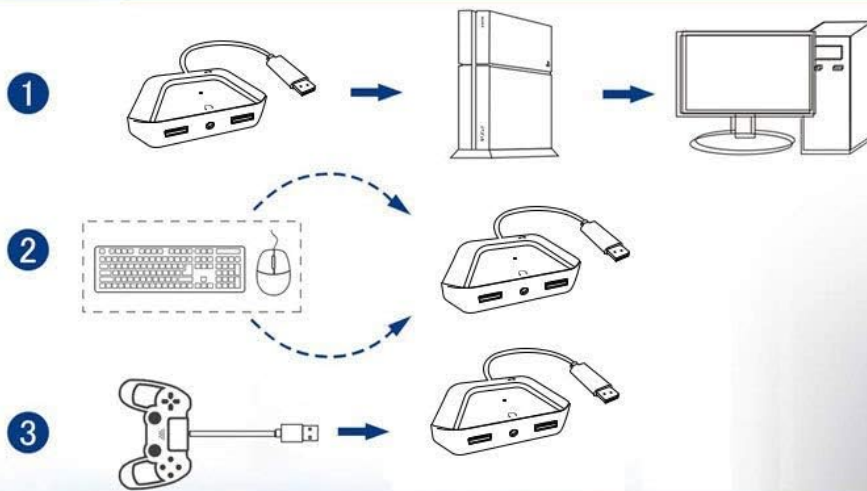
General Connection Steps:

1. Connect the integrated USB cable of the JYS-NS200 converter to an available USB port on your console.
2. Connect your wired keyboard to one of the USB-A ports on the converter.
3. Connect your wired mouse to the other USB-A port on the converter.
4. Connect the original wired controller for your console to the converter's designated controller port (if applicable for specific consoles, see below). This controller acts as a guide for the converter.

Specific Console Connection Methods:



Connection Method for PS4 (Pro/Slim) Console



Connection Method for PS3 (Pro/Slim) Console

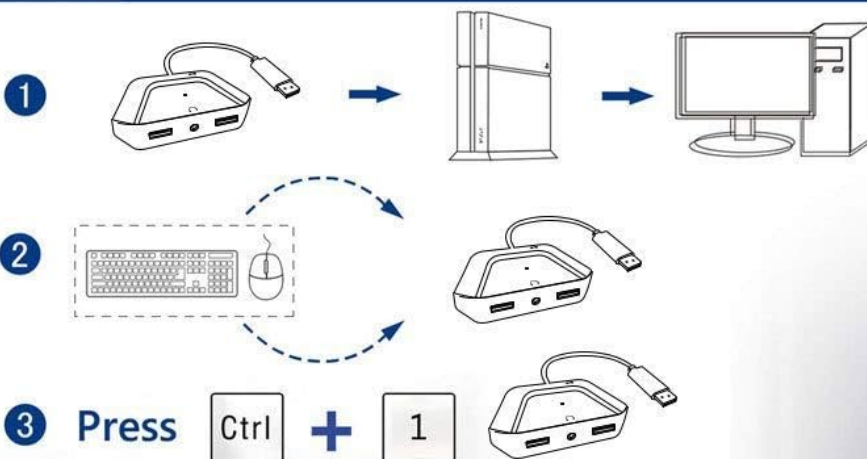


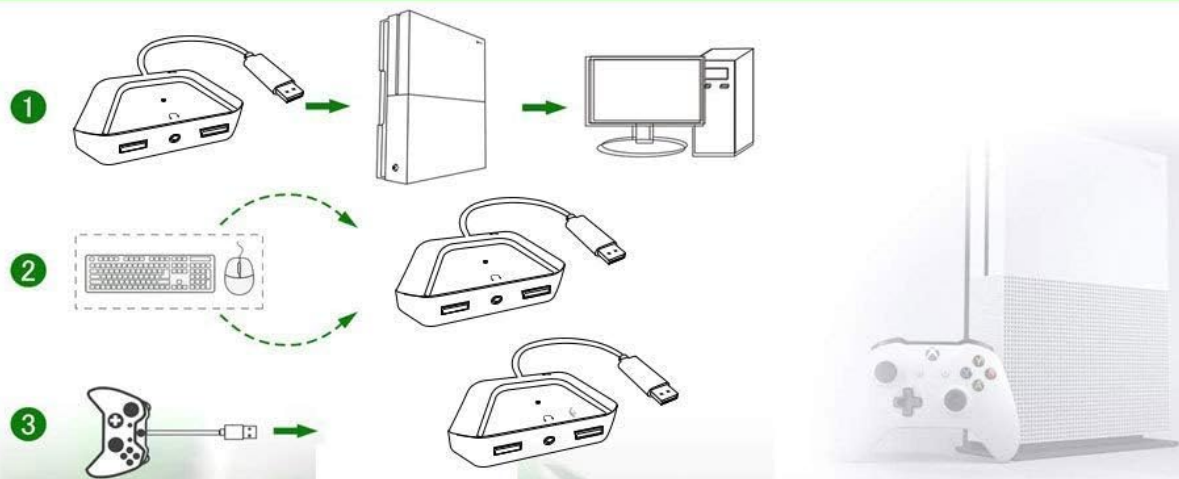
Image: Connection method for PS4 (Pro/Slim) Console.

5.1. PlayStation 4 (PS4 / PS4 Pro / PS4 Slim)

1. Connect the JYS-NS200 converter to a USB port on your PS4 console.
2. Connect your keyboard and mouse to the USB-A ports on the converter.
3. Connect your original PS4 wired controller to the converter's dedicated controller port.



Connection Method for Xbox One (X/S) Console



Connection Method for Nintendo Switch



Image: Connection method for PS3 (Pro/Slim) Console.

5.2. PlayStation 3 (PS3 / PS3 Slim)

1. Connect the JYS-NS200 converter to a USB port on your PS3 console.
2. Connect your keyboard and mouse to the USB-A ports on the converter.
3. Press **Ctrl + 1** on your connected keyboard to activate the converter for PS3.



Image: Connection methods for Xbox One (X/S) and Nintendo Switch.

5.3. Xbox One (Xbox One / Xbox One S / Xbox One X) / Xbox 360

1. Connect the JYS-NS200 converter to a USB port on your Xbox console.
2. Connect your keyboard and mouse to the USB-A ports on the converter.
3. Connect your original Xbox wired controller to the converter's dedicated controller port.

5.4. Nintendo Switch

1. Connect the JYS-NS200 converter to a USB port on your Nintendo Switch dock.
2. Connect your keyboard and mouse to the USB-A ports on the converter.
3. On your Nintendo Switch, navigate to **System Settings** → **Controllers and Sensors** → and enable the option: **Pro Controller Wired Communication**.

6. OPERATION

Once the converter is properly connected and configured for your console, your keyboard and mouse will function as the primary input devices for gaming.

Key Mapping:

- The converter allows you to map any key on your keyboard and mouse to any function of the original controller.
- Refer to your game's control settings or the converter's specific key mapping instructions (if provided separately) for customization.
- The original gamepad connected to the converter serves as a reference for button functions during mapping.

7. AUDIO FUNCTIONALITY

The JYS-NS200 converter includes a 3.5mm audio jack, allowing you to connect your headphones or headset directly to the converter for in-game audio.

- Connect any device that uses a standard 3.5mm audio port (e.g., earphones, headphones, gaming headsets) to the audio jack on the converter.
- This port provides surround sound and bass response, enhancing the audio experience during gameplay.

8. TROUBLESHOOTING

If you encounter issues with your JYS-NS200 converter, please refer to the following common troubleshooting steps:

- **Converter Not Recognized:** Ensure all cables are securely connected. Try unplugging and re-plugging the converter from the console. Verify that the original controller is properly connected to the converter (if required for your console).
- **Keyboard/Mouse Not Responding:** Check if your keyboard and mouse are wired and functioning correctly when connected directly to a computer. Ensure they are firmly plugged into the converter's USB ports.
- **Input Lag:** Ensure your console's display settings are optimized for gaming (e.g., Game Mode on TVs). Some wireless keyboards/mice may introduce additional latency; using wired peripherals is recommended for optimal performance.
- **Nintendo Switch Specific Issue:** Confirm that "Pro Controller Wired Communication" is enabled in the Switch's System Settings.
- **PS3 Specific Issue:** Ensure you have pressed **Ctrl + 1** on the keyboard after connecting to the PS3.
- **Firmware Update:** If issues persist, check the manufacturer's website for any available firmware updates for the JYS-NS200 converter.

9. SPECIFICATIONS

Model	JYS-NS200
Manufacturer	JYS
Package Dimensions	17.4 x 10.69 x 3.1 cm
Weight	141 g
Connectivity	USB (for console), 2x USB-A (for keyboard/mouse), 3.5mm Audio Jack
Supported Platforms	Nintendo Switch, PS4, Xbox One, PS3, Xbox 360

10. CARE AND MAINTENANCE

- Keep the converter in a dry environment, away from moisture and extreme temperatures.
- Avoid dropping or subjecting the device to strong impacts.
- Clean the surface with a soft, dry cloth. Do not use chemical cleaners.

- Do not attempt to disassemble or repair the converter yourself. Contact customer support if service is required.

11. WARRANTY AND SUPPORT

For warranty information or technical support, please refer to the documentation provided with your purchase or contact the retailer/manufacturer directly. Keep your proof of purchase for warranty claims.