

[manuals.plus](#) /

› [Sinperne](#) /

› [Sinperne 3-in-1 Hair Dryer & Volumizer Instruction Manual](#)

Sinperne B08G4QLP3L

Sinperne 3-in-1 Hair Dryer & Volumizer Instruction Manual

Model: B08G4QLP3L

PRODUCT OVERVIEW

The Sinperne 3-in-1 Hair Dryer & Volumizer is a versatile styling tool designed to dry, straighten, curl, and volumize hair. It features interchangeable brush heads, negative ion technology, and ceramic coating for enhanced hair care.

Key Features:

- **Interchangeable Brush Heads:** Includes a blow dryer head, a 32mm brush head for straightening and curling, and a 25mm curly hair brush head.
- **Multifunctional Styling:** Capable of straightening, curling, volumizing, and scalp massaging.
- **Safety Features:** Equipped with an ALCI safety plug for automatic power-off and advanced noise reduction.
- **Ionic and Ceramic Technology:** Utilizes 360° negative ions to reduce frizz and enhance shine, with a ceramic coating for even heat distribution.
- **User-Friendly Design:** Features a tangle-free 360° swivel cord, anti-static nylon bristles, and an ergonomic oval design.

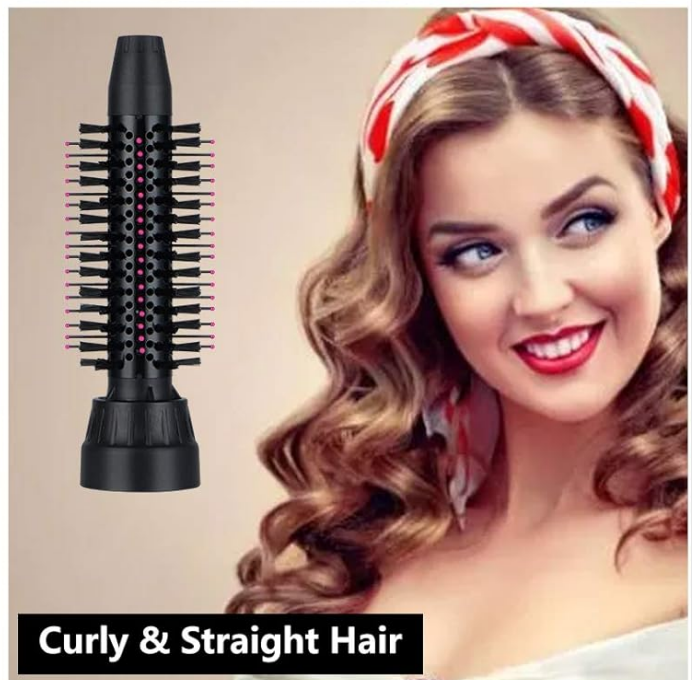


Image: The Sinperne 3-in-1 Hair Dryer and Volumizer showing its main handle and three distinct interchangeable brush heads, including a large oval brush, a medium round brush, and a smaller round brush.

Safety Information

This section contains important safety guidelines for the Sinperne Hair Dryer & Volumizer. Please read carefully before use.

- The hot air brush features an ALCI safety plug that automatically powers off to ensure user protection.
- Always check the product before each use. If there is any damage, discontinue use immediately.
- Do not use near water or while bathing.
- Unplug the appliance when not in use.
- Keep out of reach of children.
- Allow the appliance to cool down completely before storing.
- Statements regarding dietary supplements have not been evaluated by the FDA and are not intended to diagnose, treat, cure, or prevent any disease or health condition.

SETUP AND ASSEMBLY

Follow these steps to set up your Sinperne Hair Dryer & Volumizer and attach the desired brush head.

Attaching Brush Heads:

1. Select the desired brush head and align it with the card slot on the handle.
2. Twist the brush head left with slight effort until it clicks securely into place.

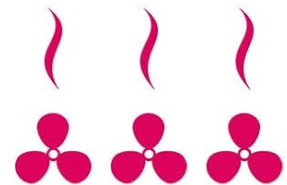
Detaching Brush Heads:

1. Ensure the device is unplugged and cooled down.
2. Press the release button located on the handle.
3. Twist the brush head right to remove it from the handle.

3 TEMPRRETURE LEVEL SETTING



Negative Ion Technology
Smooth & Reduce Frizz and Static



High Temperature
for Blow Drying Winter Long Hair Style



Middle Temperature
for Styling Comb Blowing



Low Temperature
for Summer Blowing



Image: Visual guide illustrating the installation and disassembly process for the interchangeable brush heads.

Power Connection:

1. Plug the ALCI safety plug into a suitable power outlet.
2. Press the yellow "test" button on the plug to turn off the power.
3. Press the red "reset" button to connect power and ensure the device is ready for use.

HOW TO START TO WORK



Image: A step-by-step visual guide on how to properly connect the hair dryer to power using its ALCI safety plug.

Installation Video:

Your browser does not support the video tag.

Video: This video demonstrates the installation process for the interchangeable brush heads, showing how to securely attach them to the main unit.

OPERATING INSTRUCTIONS

Achieve your desired hairstyle by following these operating guidelines.

General Usage:

1. For best results, towel dry hair to remove excess water before styling.
2. Use the blow dryer head for quick drying of wet hair.
3. Select and install the appropriate brush head for your desired hair style (straightening, curling, volumizing).
4. To curl ends, place the hair brush **UNDER** the ends and hold for 2 to 3 seconds before rotating.

Temperature and Speed Settings:

The device features three temperature/speed levels:

- **HIGH:** For blow drying, suitable for winter or long hair styles.
- **MIDDLE:** For styling and combing.
- **LOW:** For summer drying or gentle styling.
- **OFF:** To power off the device.

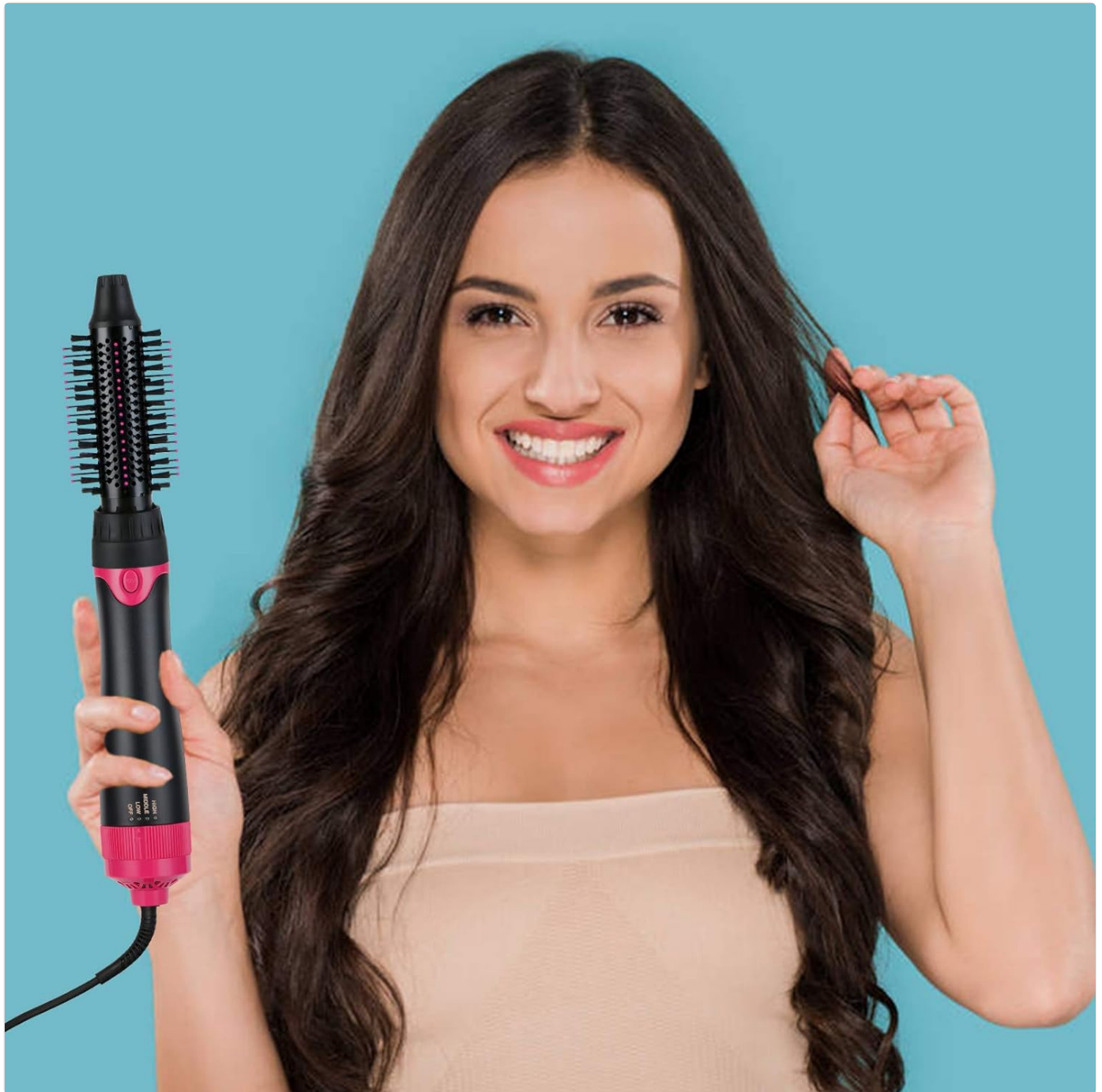


Image: A visual representation of the three temperature and speed settings available on the hair dryer, indicating their recommended uses.

Styling Demonstration Video:

Your browser does not support the video tag.

Video: This video provides a demonstration of the hair dryer brush in action, showcasing its ability to style hair.

MAINTENANCE AND CARE

Proper maintenance ensures the longevity and optimal performance of your hair dryer and volumizer.

- Always unplug the device from the power outlet before cleaning.
- Allow the appliance to cool down completely before cleaning or storing.
- Wipe the main body and brush heads with a soft, damp cloth. Do not use abrasive cleaners or solvents.
- Regularly remove any hair or debris from the brush bristles to maintain airflow and prevent overheating.
- Store the hair dryer and its attachments in a dry, safe place, away from moisture and extreme temperatures.

TROUBLESHOOTING

If you encounter any issues with your Sinperne Hair Dryer & Volumizer, refer to the following common troubleshooting tips.

Problem	Possible Cause	Solution
Device does not turn on.	Not properly plugged in; ALCI safety plug tripped; Power outage.	Ensure plug is fully inserted. Press the red "reset" button on the ALCI plug. Check household power supply.
Brush head detaches during use.	Brush head not securely locked.	Ensure the brush head is twisted left until it clicks firmly into place during installation.
Reduced airflow or overheating.	Air vents blocked by dust or hair.	Unplug and allow to cool. Clean any debris from the air intake and brush bristles.
Hair not styling as desired.	Incorrect temperature setting; Hair too wet; Improper technique.	Adjust temperature setting. Towel dry hair more thoroughly. Review operating instructions for proper technique.

SPECIFICATIONS

Detailed technical specifications for the Sinperne 3-in-1 Hair Dryer & Volumizer.

Specification	Detail
Product Dimensions	19 x 25 x 34 inches; 2.36 Pounds
Wattage	1000 watts
Voltage	110 volts
Material	Ceramic
Power Source	Corded Electric
Model Number (ASIN)	B08G4QLP3L
Manufacturer	Dongguan Shengming Industrial Co., Ltd
First Available Date	August 18, 2020

Instruction of Replace The Brush Head

INSTALLATION



Step1

Select the brush and match the card slot of brush head and handle



Step2

Twist left with some effort till it clicks

DISASSEMBLY



Step3

Press the Button



Step4

Twist right to remove the brush

Image: A detailed diagram illustrating the dimensions of the hair dryer handle and each of its three interchangeable brush heads.

WARRANTY AND SUPPORT

For warranty information or product support, please contact Sinperne customer service through their official channels. Refer to your purchase documentation for specific warranty terms and conditions.

You can visit the [Sinperne Store on Amazon](#) for more information and contact options.