

Manuals.plus /

- › mifo /
- › mifo O4 TWS Wireless Earbuds User Manual

mifo O4

mifo O4 TWS Wireless Earbuds User Manual

Model: O4



INTRODUCTION

Thank you for choosing the mifo O4 TWS Wireless Earbuds. This manual provides detailed instructions on how to set up, operate, and maintain your earbuds to ensure optimal performance and longevity. Please read this manual thoroughly before using the product.

PACKAGE CONTENTS

Ensure all items are present in the package:

- mifo O4 TWS Wireless Earbuds (Left and Right)
- Charging Case
- Ear Cushions (Multiple sizes for optimal fit)
- USB-C Charging Cable
- User Manual (This document)

SETUP

1. Charging the Earbuds and Case

Before first use, fully charge the mifo O4 earbuds and their charging case. The charging case supports both USB-C cable charging and wireless charging.

- **USB-C Charging:** Connect the provided USB-C cable to the charging port on the case and to a power source.
- **Wireless Charging:** Place the charging case on a compatible wireless charging pad.

The earbuds offer approximately 6-7 hours of use on a single charge. The portable charging case provides 3 additional full charges, extending total playtime to about 28 hours.

2. Pairing with Your Device

The mifo O4 earbuds feature one-step pairing for convenience.

1. Open the charging case and remove both earbuds. They will automatically enter pairing mode.
2. On your device (smartphone, tablet, etc.), navigate to the Bluetooth settings.
3. Turn on Bluetooth and select "mifo O4" from the list of available devices.
4. Once connected, you will hear an audible confirmation, and the earbuds will be ready for use.



LOW LATENCY & STABLE CONNECTION

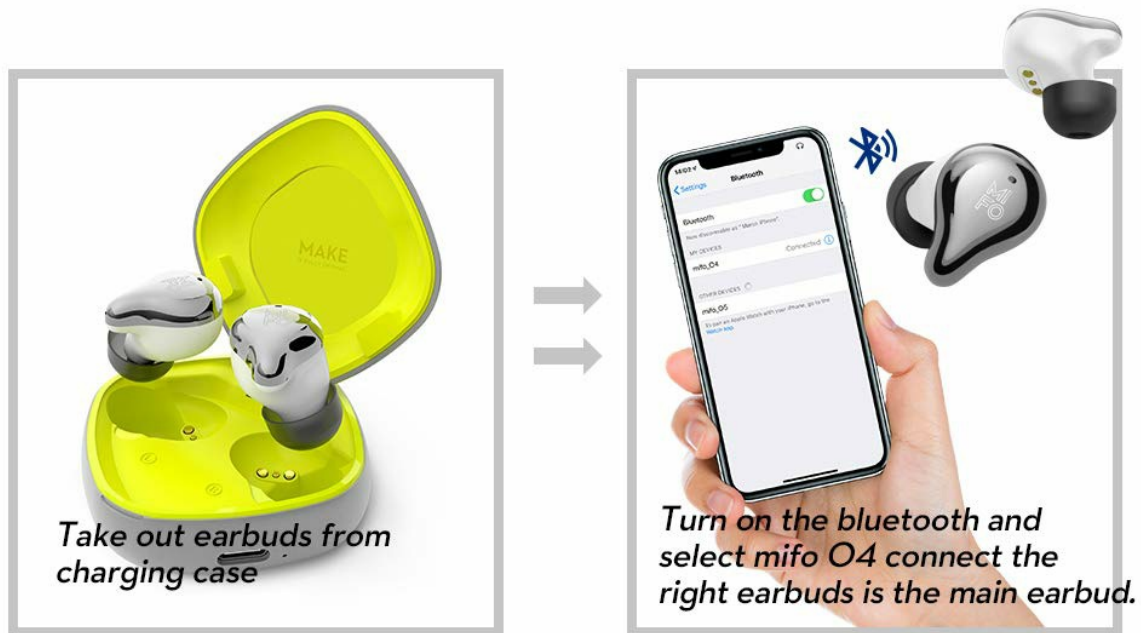


Figure 2: Pairing the mifo O4 Earbuds. Remove earbuds from the case, then select "mifo O4" in your device's Bluetooth settings.

The earbuds will automatically reconnect to the last paired device when removed from the case.

OPERATING INSTRUCTIONS

1. Touch Controls

The mifo O4 earbuds feature intuitive touch controls on each earbud. Specific functions may vary slightly by device, but general controls are as follows:

- **Play/Pause:** Single tap on either earbud.
- **Next Track:** Double tap on the right earbud.
- **Previous Track:** Double tap on the left earbud.
- **Answer/End Call:** Single tap on either earbud during an incoming call or active call.
- **Reject Call:** Press and hold either earbud for 2 seconds during an incoming call.
- **Activate Voice Assistant:** Triple tap on either earbud (functionality depends on device support).

2. Transparent Hearing Mode

This mode allows you to hear ambient sounds around you, enhancing situational awareness. It is

particularly useful for activities like driving or cycling.

- **Activate/Deactivate:** Press and hold either earbud for 3 seconds. You will hear an audible cue indicating the mode change.

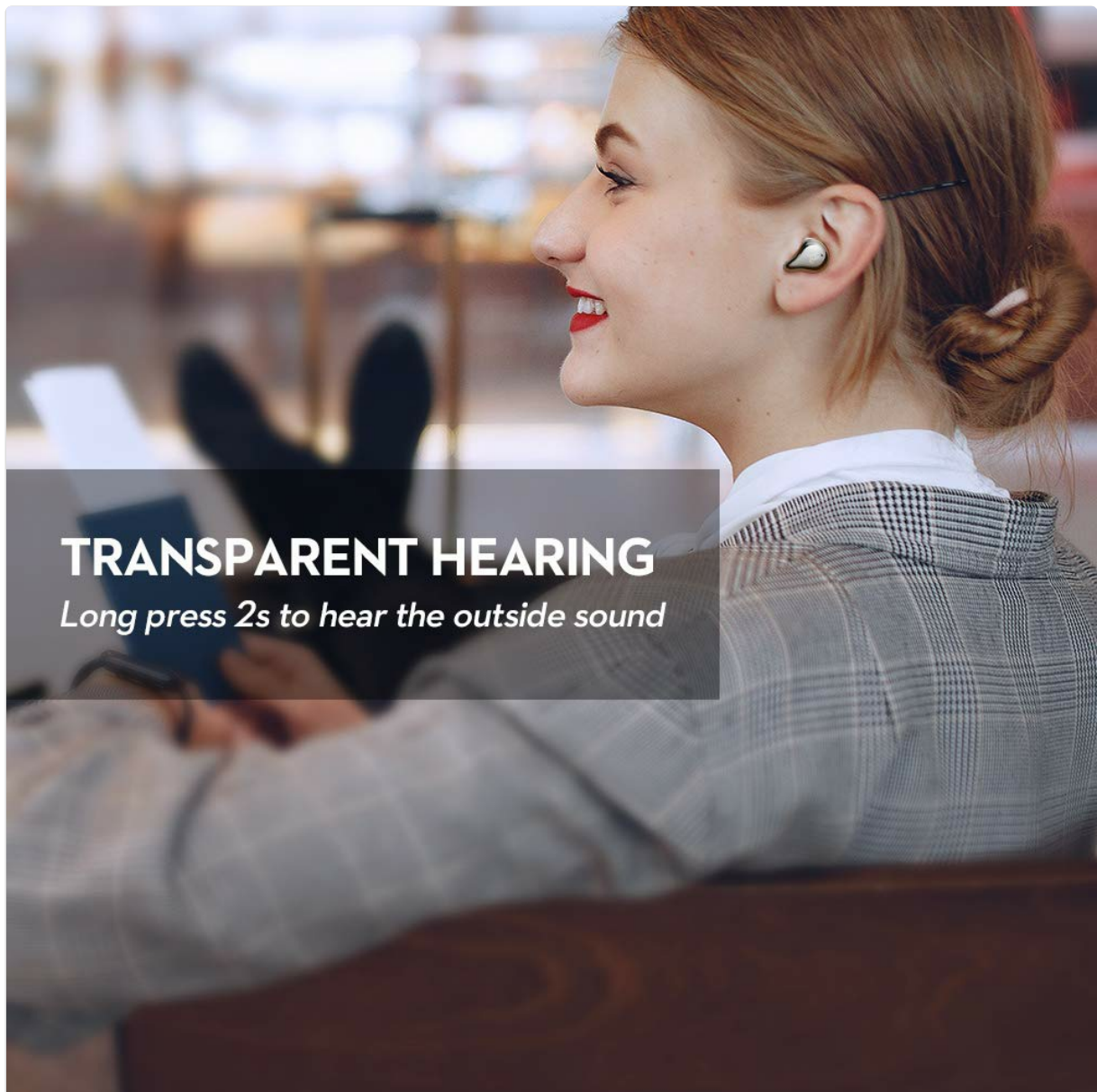
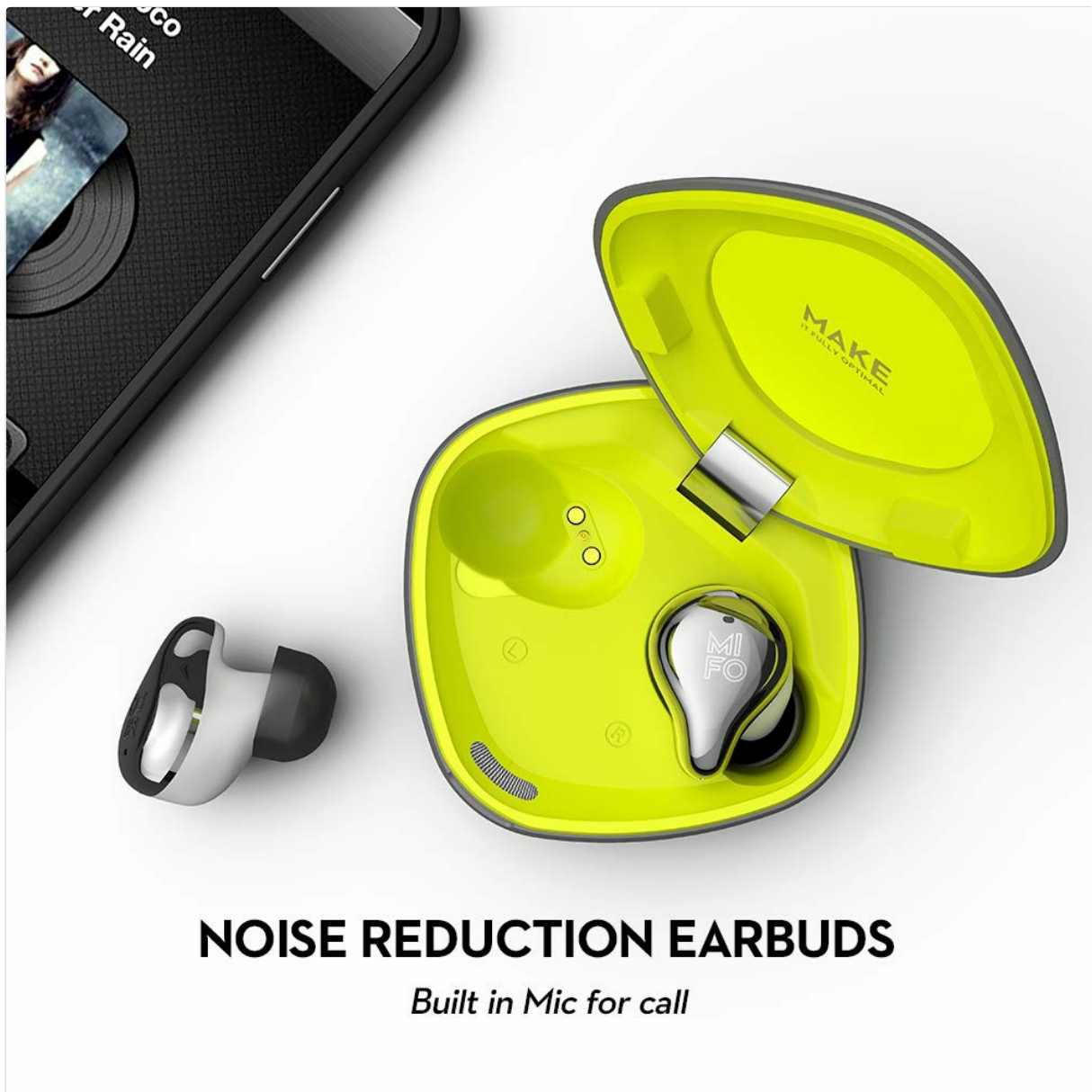


Figure 3: Activating Transparent Hearing Mode. Press and hold an earbud to hear ambient sounds.

3. Call Functions and Noise Reduction

The mifo O4 earbuds are equipped with two built-in microphones and intelligent noise cancellation technology to ensure clear phone calls.

- **Answering/Ending Calls:** Single tap on either earbud.
- **Rejecting Calls:** Press and hold either earbud for 2 seconds.



NOISE REDUCTION EARBUDS

Built in Mic for call

Figure 4: Noise Reduction and Built-in Microphones. Ensures clear communication during calls.

4. Deep Bass Mode

Experience powerful, balanced sound with dynamic audio drivers. The earbuds are designed to deliver an incredible listening experience with enhanced deep bass.

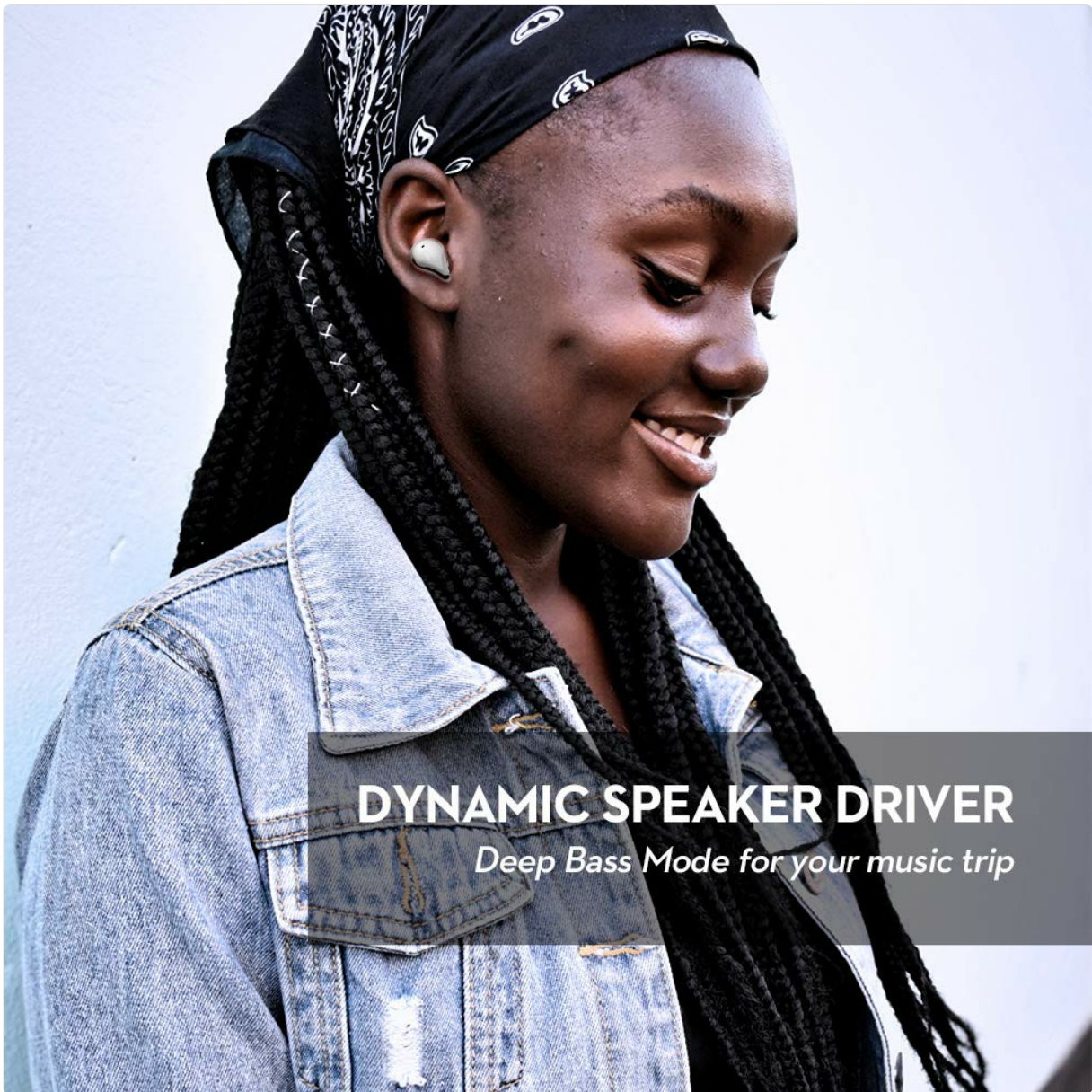


Figure 5: Dynamic Speaker Driver. Enjoy rich audio with deep bass.

MAINTENANCE

1. Cleaning Your Earbuds

Regular cleaning helps maintain sound quality and hygiene.

- Gently wipe the earbuds and charging case with a soft, dry, lint-free cloth.
- Remove ear tips and clean them separately with mild soap and water if necessary. Ensure they are completely dry before reattaching.
- Do not use abrasive materials, alcohol, or chemical cleaners.

2. Water and Dust Resistance (IP67)

The mifo O4 earbuds are rated IP67, meaning they are protected against dust ingress and can withstand immersion in water up to 1 meter for 30 minutes. This makes them suitable for sports and workouts.



Figure 6: IP67 Water and Dust Resistance. Earbuds are protected against sweat and rain.

Important: While IP67 rated, the charging case is not waterproof. Do not expose the charging case to water or moisture. Ensure earbuds are completely dry before placing them back into the charging case to prevent damage.

TROUBLESHOOTING

If you encounter issues with your mifo O4 earbuds, refer to the following common solutions:

Problem	Solution
Earbuds not pairing	<ul style="list-style-type: none"> • Ensure earbuds are charged. • Place earbuds back in the case, close it, then open again and remove them. • Turn off and on Bluetooth on your device. • Forget "mifo O4" in your device's Bluetooth settings and try pairing again.
No sound from one earbud	<ul style="list-style-type: none"> • Ensure both earbuds are charged. • Place both earbuds back in the case, close it, then open again and remove them to re-establish connection. • Clean any debris from the earbud's speaker mesh.
Earbuds not charging	<ul style="list-style-type: none"> • Ensure the charging cable is securely connected to both the case and the power source. • Try a different USB-C cable or power adapter. • If using wireless charging, ensure the case is correctly positioned on the charging pad. • Clean the charging contacts on both the earbuds and inside the case.
Poor sound quality	<ul style="list-style-type: none"> • Ensure earbuds are properly seated in your ears for a good seal. Try different ear tip sizes. • Clean the earbud speaker mesh. • Ensure your device is within the Bluetooth range (typically 10 meters/33 feet) and there are no major obstructions.

SPECIFICATIONS

Feature	Detail
Model	O4
Wireless Technology	Bluetooth 5.0
Playtime (Earbuds)	6-7 hours per charge
Total Playtime (with Case)	Up to 28 hours
Charging Port	USB-C
Wireless Charging	Supported (Qi-compatible)
Water Resistance	IP67 (Earbuds only)
Control Type	Touch Control
Microphone	Built-in (2 Mics for clear calls)
Special Features	Transparent Hearing Mode, Deep Bass Mode, Intelligent Noise Cancellation
Weight	209 g (Total package weight)
Material	Plastic

WARRANTY INFORMATION

mifo products are designed and manufactured to the highest quality standards. For detailed warranty

information, please refer to the warranty card included with your purchase or visit the official mifo website. Keep your proof of purchase for warranty claims.

CUSTOMER SUPPORT

If you have any questions, require technical assistance, or need further support, please contact mifo customer service through the official mifo website or the contact information provided with your product packaging. Please have your product model (O4) and purchase details ready when contacting support.