

LEPOTEC TL030-2

LEPOTEC 30-LED Motion Sensor Cabinet Light Instruction Manual

Model: TL030-2 | Brand: LEPOTEC

1. INTRODUCTION

Thank you for choosing the LEPOTEC 30-LED Motion Sensor Cabinet Light. This manual provides detailed instructions for the proper installation, operation, and maintenance of your new lighting product. Please read this manual thoroughly before use and retain it for future reference.

Package Contents:

- LEPOTEC 30-LED Motion Sensor Cabinet Light (2 units)
- USB Charging Cable
- Adhesive Magnetic Strips
- User Manual

2. PRODUCT FEATURES

- **Advanced LED Technology:** Features 30 side-emitting LED lamp beads for bright (up to 200 lumens) yet soft, non-glare illumination. Constructed from durable aluminum alloy.
- **Easy Installation:** Built-in magnet allows direct attachment to iron surfaces. For non-iron surfaces, use the included adhesive tape and metal sheet for secure mounting. Lights can be easily removed for charging or relocation.
- **Three Working Modes:** Equipped with a 3-mode switch (ON-OFF-G) for continuous illumination, off, or motion sensor mode.
- **USB Rechargeable:** Integrated 1000mAh high-capacity rechargeable battery, easily charged via the included USB cable. Offers approximately 3 hours of continuous light or 2-4 weeks in motion sensor mode (based on 10 activations per day) on a full charge.
- **Wide Application:** Suitable for various indoor locations such as closets, cabinets, corridors, workshops, basements, garages, and stairwells.



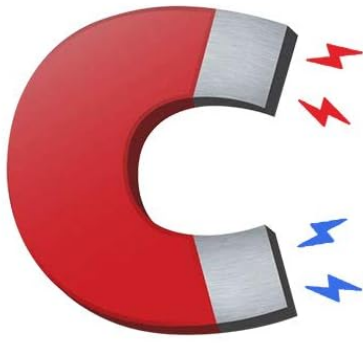
Image: Two LEPOTEC 30-LED Motion Sensor Cabinet Lights, illustrating the product design.

3. SETUP AND INSTALLATION

The LEPOTEC cabinet light offers flexible installation options due to its magnetic design.

Installation Steps:

1. **Direct Magnetic Attachment:** If installing on an iron surface (e.g., refrigerator, metal cabinet), simply place the light directly onto the surface. The built-in magnet will secure it.
2. **Adhesive Magnetic Strip Installation (for non-iron surfaces):**
 - Clean the desired installation surface to ensure it is dry and free of dust or grease.
 - Peel off the protective film from one side of the adhesive tape and attach it to the metal plate.
 - Peel off the protective film from the other side of the adhesive tape and firmly press the metal plate onto the cleaned surface.
 - Attach the LEPOTEC cabinet light to the metal plate. The light will magnetically adhere to the plate.



BUILT-IN MAGNET

EASY TO INSTALL

Be directly absorbed
on the iron object



Be fixed on the non-metal object
through the double faced
adhesive tape and metal plate

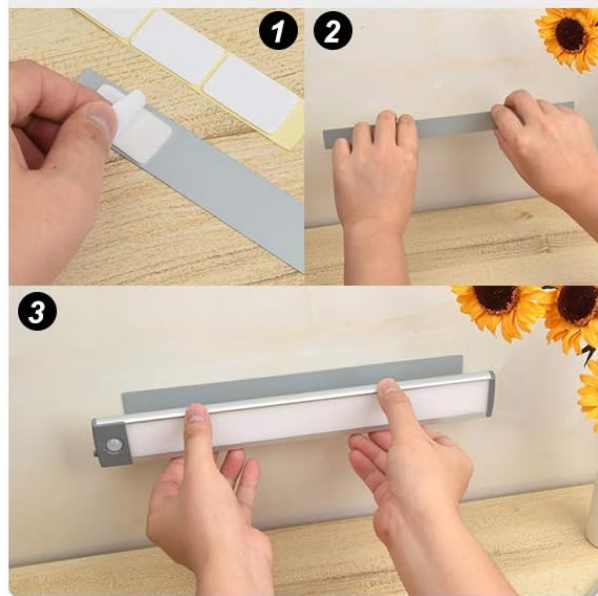


Image: Illustration of the built-in magnet for direct attachment and the adhesive magnetic strip method for non-metal surfaces.

4. OPERATING INSTRUCTIONS

The LEPOTEC cabinet light features a versatile 3-mode switch and motion sensing capabilities.

Mode Selection:

Locate the switch on the side of the light bar. Slide the switch to select one of the following modes:

- **ON:** The light will remain continuously on.
- **OFF:** The light will be turned off.
- **G (Motion Sensor Mode):** In a dark environment, the light will automatically detect human motion within a 10ft/120° range. It will turn on when motion is detected and automatically turn off after 20 seconds of no movement. The motion sensor is designed to activate only in low-light conditions to conserve battery life.

3 Mode switches



Image: Detailed view of the 3-mode switch (G, OFF, ON) and the Type-C charging port.



Auto-induction Condition



In bright light environment (Daytime)

The inductor will not be triggered and the light will be off

In low light environment (Night)

It turns on automatically if people passing by has been sensed, and extinguishes automatically 20s after there is no movement

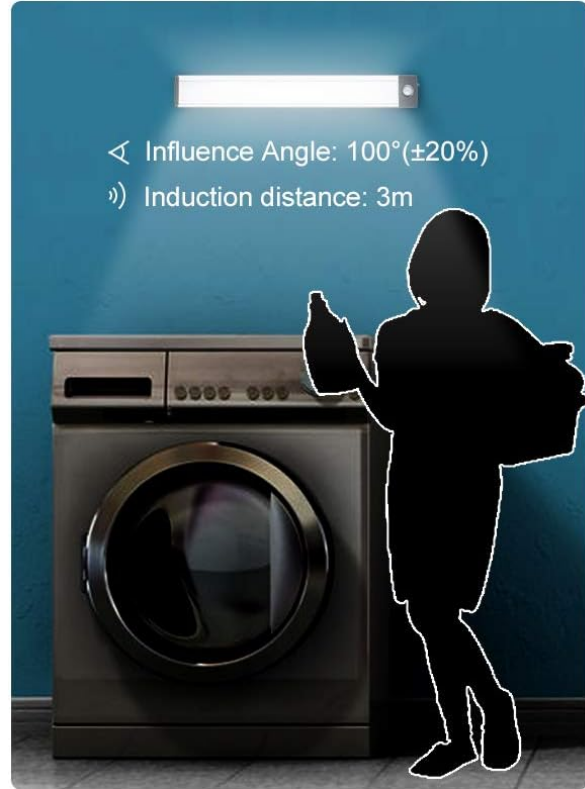


Image: Explanation of the auto-induction condition, showing the motion sensor activates only in low light (night) and not in bright light (daytime).

5. MAINTENANCE

Charging the Battery:

The light is equipped with a built-in rechargeable battery. When the battery is low, the light output may diminish. To charge:

1. Connect the included USB charging cable to the Type-C charging port on the light bar.
2. Connect the other end of the USB cable to a standard USB power adapter (not included) or a computer USB port.
3. The charging indicator light will illuminate red during charging.
4. Once fully charged (approximately 3 hours), the indicator light will turn green.
5. Disconnect the charging cable.



| | | | |
|--|---|---|---|
| <p>1000mAh</p> <p>Battery capacity 1000mAh strong endurance</p> | <p>NOT BATTERY EXCHANGE</p> <p>Can be cyclically recharged, free of the trouble of frequently exchanging the battery</p> | <p>QUICK CHARGE</p> <p>Fast charging speed be fully charged in three hours</p> | <p>CHARGING STATUS</p> <p>Red indicates charging Green indicates fully charged</p> |
| | | | |

Image: Visual representation of the 1000mAh battery, quick charge capability, and charging status indicators (red for charging, green for fully charged).

Cleaning:

To clean the light, gently wipe the surface with a soft, dry cloth. Do not use abrasive cleaners or solvents, as these may damage the finish or electronic components.

6. TROUBLESHOOTING

If you encounter issues with your LEPOTEC cabinet light, please refer to the following common problems and solutions:

| Problem | Possible Cause | Solution |
|--|---|--|
| Light does not turn on in 'G' (Motion Sensor) mode. | Insufficient darkness; battery low; sensor obstructed. | Ensure the environment is dark enough for the sensor to activate. Charge the battery. Check if the sensor is clean and unobstructed. |
| Light stays on continuously in 'G' mode or flickers. | Constant motion detected; sensor malfunction; switch issue. | Ensure no continuous motion is within the sensor's range. Try switching to 'OFF' and then back to 'G' mode. If the issue persists, contact customer support. |

| Problem | Possible Cause | Solution |
|--|---|--|
| Light does not charge. | Faulty cable; power source issue; charging port damage. | Try a different USB cable and power adapter. Ensure the charging port is clean and undamaged. |
| Battery life is shorter than expected. | Frequent activation; continuous 'ON' mode usage. | Battery life varies with usage frequency. Reduce activations in 'G' mode or use 'OFF' mode when not needed. Ensure the light is fully charged. |

7. SPECIFICATIONS

| Feature | Detail |
|----------------------|--|
| Brand | LEPOTEC |
| Model Number | TL030-2 |
| Light Source | 30 LED Beads |
| Light Color | White Light |
| Brightness | 200 Lumens |
| Wattage | 2 Watts |
| Voltage | 3.7 Volts |
| Battery Capacity | 1000mAh Lithium Polymer |
| Charging Time | Approx. 3 hours |
| Motion Sensor Range | 10ft / 120° |
| Auto-off Time | 20 seconds (after no motion in 'G' mode) |
| Material | Aluminum, Iron |
| Product Dimensions | 8.2"L x 3.5"W x 0.6"H (7.8 inch length for the light bar itself) |
| Item Weight | 9.12 ounces |
| Installation Type | Magnetic, Adhesive Mount |
| Indoor/Outdoor Usage | Indoor |

8. WARRANTY AND SUPPORT

LEPOTEC is committed to providing high-quality products. For any questions, concerns, or technical support regarding your LEPOTEC 30-LED Motion Sensor Cabinet Light, please contact our customer service team.

Please refer to your purchase documentation or the retailer's website for specific warranty details and contact information.

