

SOICARE USB02

SOICARE Car Essential Oil Diffuser (Model USB02) Instruction Manual

Brand: SOICARE | Model: USB02

1. SAFETY INFORMATION

Please read all safety instructions carefully before using the SOICARE Car Essential Oil Diffuser. Retain this manual for future reference.

- Do not leave the device unattended while in use.
- Although the device features an automatic shut-off, avoid using essential oils near open flames or certain electrical appliances.
- Keep the device out of reach of children and pets.
- The diffuser is powered by a USB 3.0 port/hub with an output of 5V 1A. Ensure the power source meets these specifications.
- The device includes a low water level shut-off feature to prevent dry burning.
- The well-sealed design provides spill-proof protection, making it safe for use near laptops, desktops, and in vehicles.
- Use light essential oils to protect the machine and for optimal olfactory health.

2. PRODUCT OVERVIEW

The SOICARE Car Essential Oil Diffuser is a compact and portable aromatherapy device designed for use in various environments, including vehicles, offices, and homes. It utilizes ultrasonic vibrations to produce a fine mist, dispersing essential oils into the air.



Image: The SOICARE Car Essential Oil Diffuser in elegant black, showcasing its sleek design.

Key Features:

- **Ultrasonic Technology:** Produces a fine, consistent mist for effective essential oil diffusion.
 - **Compact and Portable:** Designed to fit in vehicle cup holders and easily carried for travel.
 - **Dual Power Buttons:** Features power buttons on both the USB cord and the unit's base for convenient operation.
 - **Built-in USB Cable:** Includes a retractable USB cord organizer at the bottom.
 - **Color-Changing LED Lights:** Provides ambient lighting with a ring of color-changing lights.
 - **Automatic Shut-off:** Activates when water levels are low to ensure safety.
-

3. SETUP AND FIRST USE

Follow these steps to set up your SOICARE Car Essential Oil Diffuser:

1. **Open the Diffuser:** Hold the bottom of the diffuser with one hand and gently rotate the top cover counter-clockwise with the other hand to remove it.
2. **Add Water:** Fill the water tank with clean water. Do not exceed the maximum fill line marked "MAX" inside the reservoir. The capacity is 60 milliliters.
3. **Add Essential Oil:** Add a few drops of your preferred essential oil directly into the water tank.
4. **Close the Diffuser:** Replace the top cover by aligning it and rotating clockwise until securely closed.
5. **Connect Power:** Plug the built-in USB cable into a compatible USB 3.0 port/hub (5V 1A output). The diffuser can be powered by various USB sources, including car chargers, power banks, or laptops.
6. **Power On:** Press either the power button on the USB cord or the button on the base of the unit to turn on the diffuser.



Image: Visual guide demonstrating the four steps to prepare the diffuser for use: opening, adding water, adding essential oil, and powering on.



Image: The SOICARE diffuser positioned in a car's cup holder, actively diffusing essential oils.

4. OPERATING INSTRUCTIONS

Once set up, the diffuser is ready for operation. It features simple controls for mist and lighting.

Power On/Off:

- Press the power button on the unit's base or on the USB cord to turn the diffuser on or off.
- The diffuser will begin emitting mist and the color-changing LED lights will activate.

Mist Output:

The diffuser uses ultrasonic vibrations to produce a steady mist. This technology helps to fully resolve essential oils for consistent scent dispersion and can help maintain humidity in small spaces.

LED Lighting:

The diffuser features a ring of color-changing LED lights on the top. These lights cycle through 7 different colors, providing ambient illumination.

Other Service



Principle	Ultrasonic vibration at 3.0MHZ
Material	PP
Time	6H
Power	5V/1.0A

NOTE

- *The water level will decrease as the fog diffuses. Please do not add water above the horizontal scale marked "MAX".*
- *The machine will automatically sense off without water or little water in the container.*
- *This product is convenient and safe enough, while the fog is rich enough, but we still recommend that you use light essential oils, so as to better protect the machine and your olfactory health.*

Image: An overview of the diffuser's user-friendly design, highlighting its color options, single button control, dual switches, and integrated USB cable.



Image: A display of several diffusers showcasing the variety of LED light colors available.

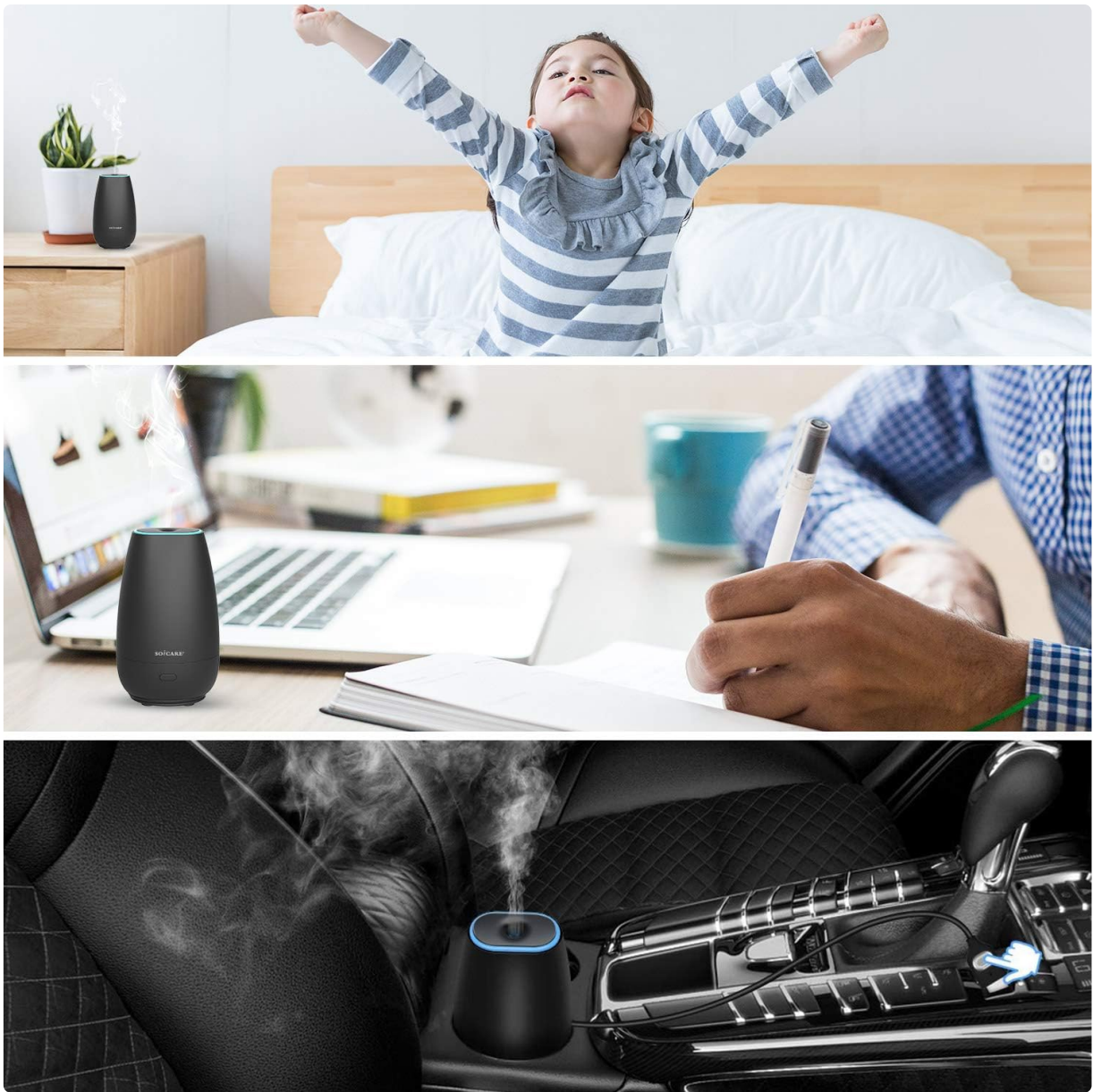


Image: The diffuser demonstrated in multiple environments, including a bedroom, office, and car interior.

5. MAINTENANCE AND CARE

Proper maintenance ensures the longevity and optimal performance of your diffuser.

Cleaning the Reservoir:

- The reservoir is designed for easy cleaning without the need for cotton swabs.
- To clean, simply use a soft, damp cloth to wipe the interior of the water tank.
- Ensure the device is unplugged before cleaning.

Important Notes:

- The water level will naturally decrease as the diffuser operates. Do not add water above the horizontal scale marked "MAX".
- The machine will automatically shut off if the water level is too low or if the tank is empty.
- Regularly clean the reservoir to prevent essential oil residue buildup, which can affect performance.

6. TROUBLESHOOTING

If you encounter issues with your diffuser, refer to the following common solutions:

Problem	Possible Cause	Solution
Diffuser does not turn on	No power, loose connection, or faulty USB port.	Ensure the USB cable is securely connected to a 5V 1A power source. Try a different USB port or power adapter.
No mist or weak mist	Insufficient water, water level too high, essential oil residue, or unit is tilted.	Check water level; refill if low (do not exceed MAX line). Clean the reservoir. Ensure the diffuser is on a flat, stable surface.
Automatic shut-off activates frequently	Low water level.	This is a safety feature. Refill the water tank when the water level is low.
Lights not working	Internal malfunction.	Ensure the unit is powered on. If the issue persists, contact customer support.

7. SPECIFICATIONS

Detailed technical specifications for the SOICARE Car Essential Oil Diffuser:

Feature	Detail
Brand	SOICARE
Model Name	USB02
Color	Black
Power Source	USB Cable
Input Voltage	5V 1A
Wattage	5 watts
Capacity	60 Milliliters
Product Dimensions	2.99"L x 2.99"W x 5.04"H
Item Weight	5.6 ounces (0.16 Kilograms)
Material	Polypropylene (PP), BPA Free
Special Features	Built-in USB Cord, Fits Cup Holder, Auto Shutoff, LED Lights
Coverage Area	Small room or Vehicle

Feature	Detail
Ultrasonic Vibration	3.0MHZ

Structural Drawing

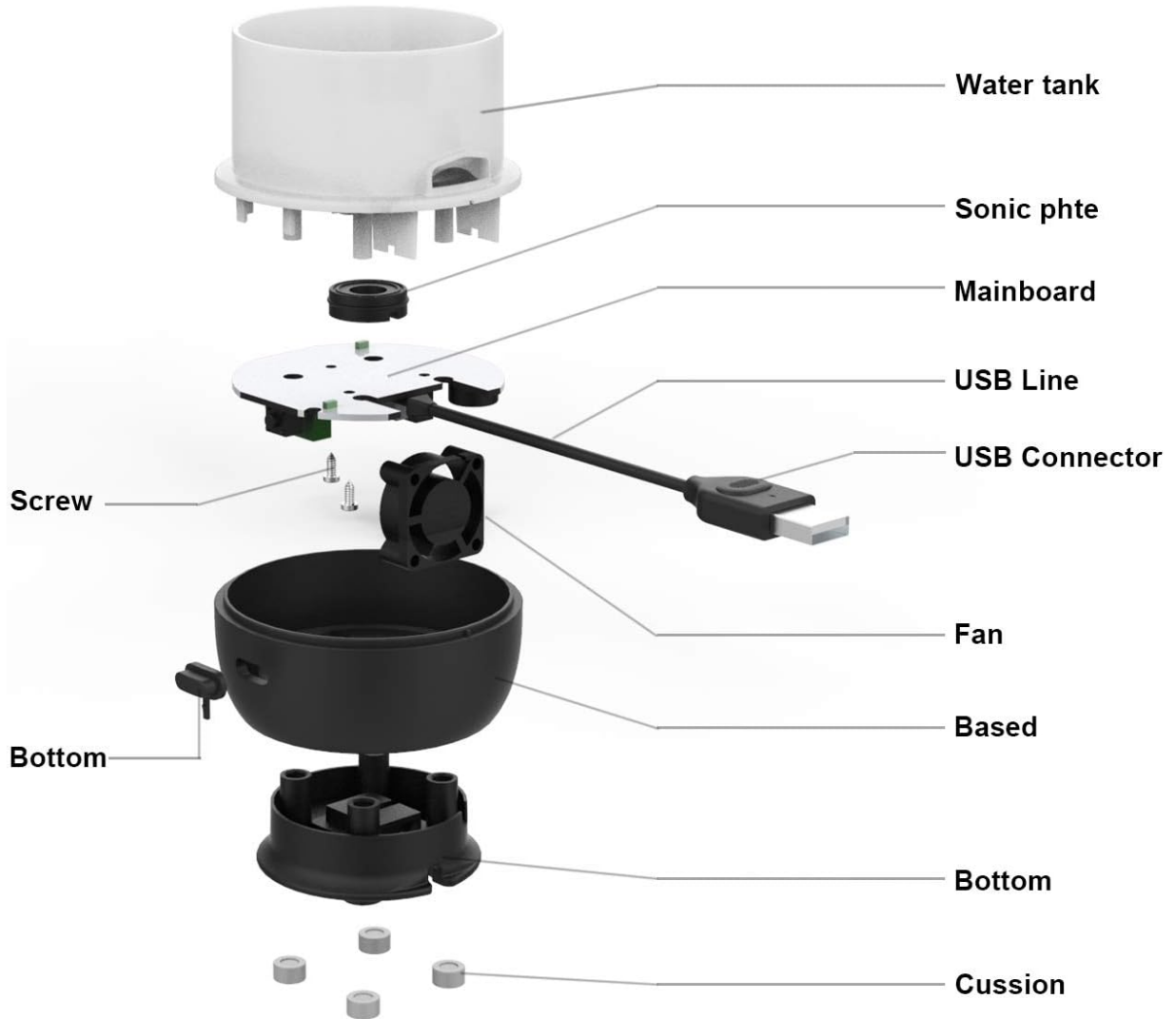


Image: Visual representation of the diffuser's dimensions and key technical specifications.

Easy to Carry



Image: An exploded diagram illustrating the internal components and structure of the diffuser.

8. WARRANTY AND SUPPORT

Warranty Information:

The SOICARE Car Essential Oil Diffuser comes with a **2-year warranty** from the date of delivery. Please retain your proof of purchase for warranty claims.

Customer Support:

For any questions, technical assistance, or warranty claims, please contact SOICARE customer support through the retailer where the product was purchased.