

Manuals+

[Q & A](#) | [Deep Search](#) | [Upload](#)

manuals.plus /

- › [BaBylissPRO](#) /
- › [BaBylissPRO Ceramix Xtreme 2000-Watt Hair Dryer Instruction Manual](#)

BaBylissPRO BX2000

BaBylissPRO Ceramix Xtreme 2000-Watt Hair Dryer Instruction Manual

MODEL: BX2000



Image: BaBylissPRO Ceramix Xtreme 2000-Watt Hair Dryer, showcasing its sleek black design.

INTRODUCTION

Thank you for choosing the BaBylissPRO Ceramix Xtreme 2000-Watt Hair Dryer. This professional-grade appliance is designed to provide efficient and gentle hair drying, utilizing advanced ceramic technology and negative ions for optimal results. Please read this manual thoroughly before use to ensure safe and effective operation.

IMPORTANT SAFETY INSTRUCTIONS

WARNING: To reduce the risk of electric shock, fire, injury to persons, or damage to property:

- Keep away from water. Do not use while bathing or in a shower.
- Always unplug the appliance immediately after use.
- Do not place or store the appliance where it can fall or be pulled into a tub or sink.
- Do not place in or drop into water or other liquid.
- If the appliance falls into water, unplug it immediately. Do not reach into the water.
- This appliance is not intended for use by persons (including children) with reduced physical, sensory or mental capabilities, or lack of experience and knowledge, unless they have been given supervision or instruction concerning use of the appliance by a person responsible for their safety.
- Children should be supervised to ensure that they do not play with the appliance.
- Never block the air openings of the appliance or place it on a soft surface, such as a bed or couch, where the air openings may be blocked. Keep the air openings free of lint, hair, and the like.
- Never use while sleeping.
- Never drop or insert any object into any opening.
- Do not use outdoors or operate where aerosol (spray) products are being used or where oxygen is being administered.
- Do not use an extension cord with this appliance.
- Do not direct hot air towards eyes or other heat-sensitive areas.

PRODUCT FEATURES

The BaBylissPRO Ceramix Xtreme Hair Dryer combines power and technology for professional styling results.

- **Ceramic Technology:** Provides extra-gentle, even far-infrared heat to protect hair from damage.
- **Negative Ions:** Reduce static electricity, promoting shiny, silky hair and faster drying times.
- **Powerful Motor:** Equipped with a 2000-watt long-life AC motor for professional strength and exceptional air pressure.
- **Multiple Settings:** Features 6 heat/speed settings for versatile styling control.
- **Cool Shot Button:** Locks in styles with a burst of cool air.
- **Design:** Soft, rubberized housing for comfortable grip.
- **Maintenance:** Removable rear filter for easy cleaning.
- **Accessories:** Includes a micro concentrator nozzle for precise airflow.

BaBylissPRO®

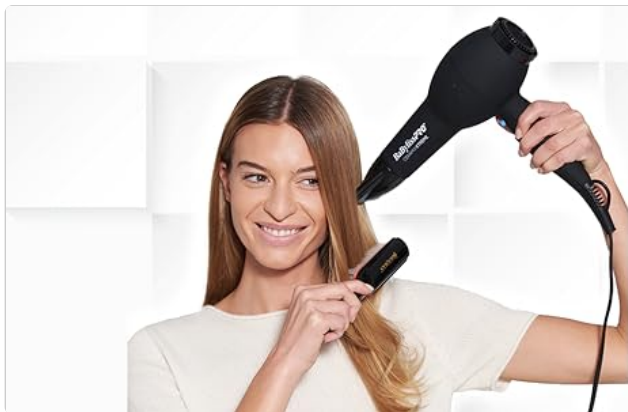
BEFORE



AFTER



Image: Diagram highlighting key features of the BaBylissPRO Ceramix Xtreme Hair Dryer, including the ceramic grill, cold shot button, 3 heat settings, 2 speed settings, and removable filter.



- Ceramic technology
- Professional strength, long-lasting AC motor
- 2000 watts
- 6 heat/speed settings
- Cold shot button
- Soft, rubberized housing
- Removable rear filter
- Includes concentrator nozzle

Image: Text describing the benefits of ceramic technology for even heat distribution and negative ions for reducing static electricity, resulting in shiny, silky hair.

SETUP

1. Unpack the hair dryer and all accessories.
2. Ensure the power cord is untangled and free from damage.
3. If desired, attach the concentrator nozzle by aligning it with the front of the dryer and pushing it firmly into place.
4. Plug the hair dryer into a standard electrical outlet. Ensure the outlet voltage matches the appliance's requirements.



Image: The BaBylissPRO Ceramix Xtreme Hair Dryer shown with its concentrator nozzle attached.

OPERATING INSTRUCTIONS

Follow these steps for effective hair drying:

1. Towel-dry hair to remove excess moisture before blow-drying.
2. Select your desired speed setting using the switch on the handle **LOW** for gentle drying or **HIGH** for fast

drying.

3. Choose your preferred heat setting using the other switch: **COOL** for setting styles, **WARM** for general drying, or **HOT** for quick drying.
4. For best results, section your hair and dry one section at a time. Direct the airflow from roots to ends.
5. To finish and set your style, press and hold the **COOL SHOT** button for a burst of cool air.
6. After use, switch the dryer to **OFF** and unplug it from the outlet.



Image: A person using the BaBylissPRO Ceramix Xtreme Hair Dryer to dry their hair, demonstrating typical usage.

MAINTENANCE

Regular maintenance ensures optimal performance and longevity of your hair dryer.

- **Cleaning the Rear Filter:** The removable rear filter should be cleaned periodically to prevent lint and hair buildup, which can reduce airflow and potentially damage the motor. To clean, twist and remove the rear filter cover. Gently brush away any accumulated debris. Replace the filter cover by twisting it back into place.
- **Storage:** When not in use, ensure the appliance is cool. Store it in a dry location, out of reach of children. Do

not wrap the cord around the appliance, as this can cause premature wear and breakage of the cord.

BaBylissPRO



Negative ionic technology reduces drying time and eliminates frizz for shiny, silky hair

Image: Rear view of the BaBylissPRO Ceramix Xtreme Hair Dryer, highlighting the removable rear filter for maintenance.

TROUBLESHOOTING

If you experience issues with your BaBylissPRO Ceramix Xtreme Hair Dryer, refer to the following common solutions:

- **No Power:** Ensure the power cord is securely plugged into a working electrical outlet. Check your circuit breaker.
- **Reduced Airflow:** Clean the removable rear filter as described in the Maintenance section. Lint and hair buildup can restrict airflow.
- **Overheating:** If the dryer stops during use, it may have overheated. Unplug it and allow it to cool down for several minutes. Check the air intake and outlet for any blockages before restarting.
- **Unusual Noise:** If the dryer makes an unusual noise, unplug it immediately and check the rear filter for any

foreign objects. If the noise persists, discontinue use and contact customer support.

For issues not covered here, please contact BaBylissPRO customer support.

SPECIFICATIONS

Product Dimensions	3.75 x 10.75 x 11.13 inches
Weight	2.25 Pounds
Item Model Number	BX2000
UPC / GTIN	074108415424
Brand	BaBylissPRO
Color	Black
Material	Ceramic
Wattage	2000 Watts
Power Source	Corded Electric



Image: Close-up of the BaBylissPRO Ceramix Xtreme Hair Dryer, indicating its ceramic material.

WARRANTY AND SUPPORT

The BaBylissPRO Ceramix Xtreme Hair Dryer comes with a **Limited 2-Year Warranty**. This warranty covers defects in materials and workmanship under normal use.

For warranty claims, technical support, or any questions regarding your product, please refer to the contact information provided with your purchase documentation or visit the official BaBylissPRO website.



The definitive professional brand

At BaBylissPRO, we're committed to creating innovative, high-performance, professional styling tools and have spent the last 50 years doing just that. We pride ourselves on versatile tools that are crafted with care and built to last. Chosen and preferred by hairdressers, barbers, and their clients again and again, BaBylissPRO tools deliver the results you want and the professional standard you can depend on.

2 YEAR WARRANTY

Image: Information highlighting BaBylissPRO's commitment to professional styling tools and the included 2-year warranty.

© 2025 BaBylissPRO. All rights reserved.