

VITCOCO 1926P FHD Wireless Otoscope

VITCOCO Ear Wax Removal Tool User Manual

MODEL: 1926P FHD WIRELESS OTOSCOPE

1. Introduction

The VITCOCO 1926P FHD Wireless Otoscope is an advanced ear wax removal tool designed to provide a clear, high-definition view of the ear canal. Equipped with a 1920P FHD camera and smart features, it allows for precise visual inspection and safe ear cleaning. This manual provides essential information on how to set up, operate, maintain, and troubleshoot your device to ensure optimal performance and user safety.

2. Safety Information

Please read all safety instructions carefully before using the device. Improper use can lead to injury.

- **Adult Supervision:** Children must use the otoscope only when accompanied by an adult.
- **Focal Length:** The optimal camera focal length for clear viewing is 1.5-2 cm.
- **Caution with Earwax Removal:** This device is primarily for visual inspection. While it aids in removal, extreme caution is advised. Do not dig deep into the ear canal. The eardrum is delicate and can be easily damaged. If significant earwax buildup is present, consult a medical professional or use a water blast method (e.g., syringe with warm water) after visual confirmation.
- **Sterilization:** Always sterilize all ear picks and accessories before and after each use. The IP67 waterproof lens can be wiped with water or alcohol.
- **Temperature Control:** The device features an intelligent temperature control chip to maintain a safe lens temperature (25-34°C) during use, preventing discomfort or burns.

3. Package Contents

Verify that all items are present in your package:

- VITCOCO 1926P FHD Wireless Otoscope
- Silicone Ear Picks/Scoops (various sizes)
- USB Type-C Charging Cable
- User Manual

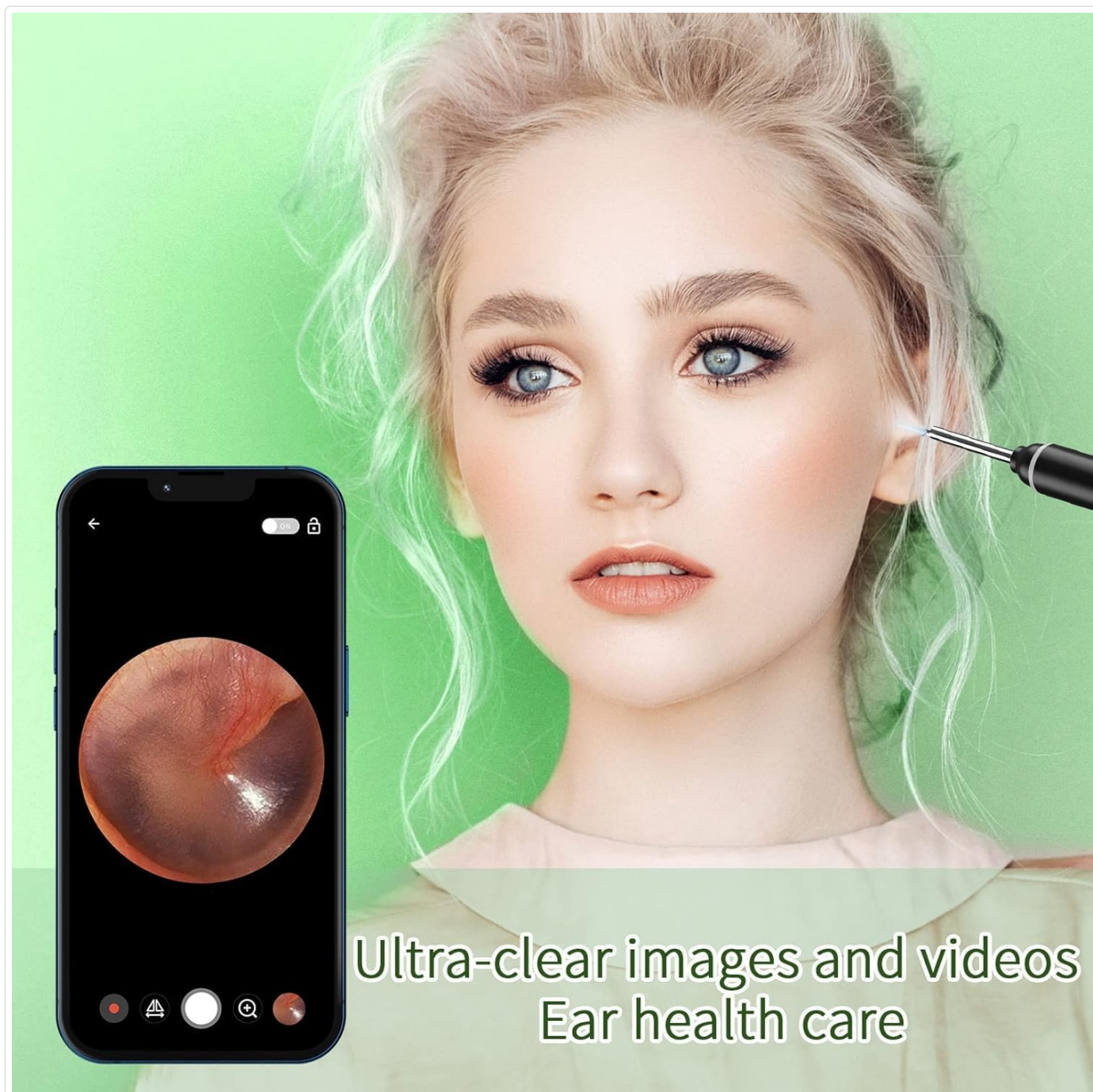


Image: The VITCOCO otoscope, various ear picks, and silicone tips, alongside a smartphone displaying the ear canal view.

4. Product Overview

The VITCOCO Otoscope is designed for ease of use and effective visual inspection. Key components and features include:

- **High-Definition Camera:** Features a 1920P FHD lens for clear, detailed images and videos of the ear canal.
- **Compact 3.0mm Diameter Lens:** Designed to safely access the ear canal.
- **6 Adjustable LED Lights:** Provide bright illumination for clear visibility in dark ear canals.
- **Smart WiFi Chip:** Ensures smooth and stable image transmission to your connected device.
- **360° Wide Angle View:** Offers a comprehensive view of the ear canal.
- **IP67 Waterproof Lens:** Allows for easy cleaning and maintenance.
- **Type-C Rechargeable Battery:** Built-in 230mAh battery for long standby and quick charging.



Ultra-clear images and videos
Ear health care

Image: Diagram illustrating the 3.0mm lens and 1920P FHD camera resolution, showing the clarity difference compared to 720P.

Merkmale



Image: Visual representation of key features including 6 LEDs, intelligent constant temperature control, 3.0mm diameter, and Type-C charging port.



Smart Wifi Chip

Ear-picking images are smooth
and not stuck

Image: Diagram showing the 360° wide-angle view, 20 frames per second (Fps) image transmission rate, 2.4GHZ working frequency, and 230mAh battery capacity.

IP67 waterproof lens



Image: Close-up view of the smart WiFi chip integrated into the otoscope, ensuring smooth image transmission.

5. Setup

Follow these steps to set up your VITCOCO Wireless Otoscope and connect it to your smartphone or tablet:

1. **Download the App:** Scan the QR code provided in the manual or on the product packaging, or visit <http://download.wuyihang.com/app/download/#!/> to download the "EndoscopeTool" app from your device's app store (available for iPhone, iPad, and Android Smart Phones).
2. **Power On:** Long press the power button on the otoscope to turn it on. A blue indicator light will illuminate.
3. **Connect to WiFi:** Go to your phone's WiFi settings and connect to the otoscope's WiFi network, typically named "softish-xxx" (where xxx is a unique identifier).
4. **Open App:** Launch the "EndoscopeTool" app and click "Start" to begin viewing the live feed from the otoscope camera.



Image: Step-by-step guide for connecting the otoscope to your smartphone via the "EndoscopeTool" app, including QR code for download.

6. Operating Instructions

Once connected, you can use the otoscope for various visual inspections:

- **Ear Inspection:** Carefully insert the otoscope into the ear canal. Observe the live feed on your connected device to view the ear canal and eardrum. Use the silicone ear picks attached to the otoscope for gentle wax removal, always maintaining a clear view and avoiding contact with the eardrum.
- **Multi-Purpose Use:** The otoscope can also be used to examine other body parts such as nasal passages, throat, teeth, and even for pet inspections.



Image: Collage demonstrating the versatile applications of the otoscope for inspecting ears, nose, mouth, and even pets.

7. Maintenance

Proper maintenance ensures the longevity and hygiene of your device:

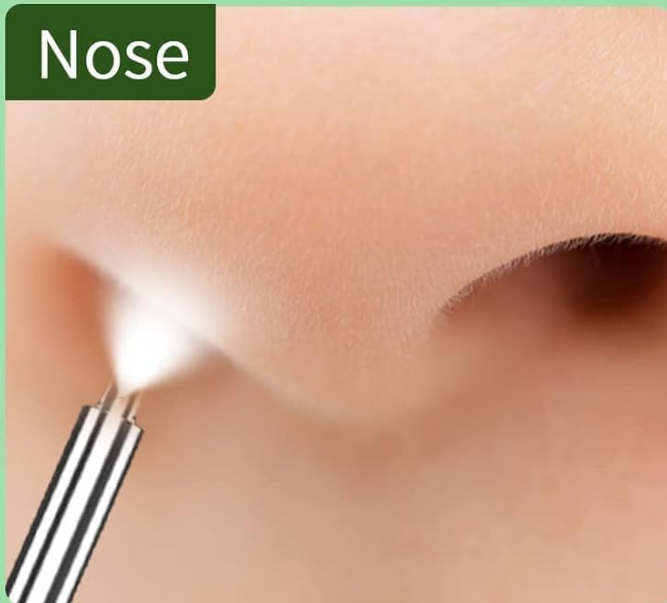
- **Cleaning the Lens:** The otoscope lens is IP67 waterproof. After each use, the lens can be wiped with water or alcohol to remove any debris. Ensure it is dry before storage.
- **Cleaning Accessories:** All ear picks and silicone tips should be thoroughly cleaned and sterilized with alcohol before and after each use.
- **Storage:** Store the device and its accessories in a clean, dry place away from direct sunlight and extreme temperatures.

Multiple Uses

Ear



Nose



Mouth



Pets



Image: The IP67 waterproof lens of the otoscope being rinsed under running water, demonstrating its easy-to-clean design.

8. Troubleshooting

If you encounter issues with your VITCOCO Otoscope, refer to the following common problems and solutions:

Problem	Possible Cause	Solution
Cannot connect to WiFi.	Otoscope not powered on; incorrect WiFi network selected; app not open.	Ensure otoscope is powered on. Select the correct "softish-xxx" WiFi network. Open the "EndoscopeTool" app.
Image is blurry or unclear.	Lens is dirty; incorrect focal length; insufficient lighting.	Clean the lens with water or alcohol. Adjust the distance to the ear canal (optimal 1.5-2 cm). Ensure LED lights are on.
Device not charging.	Charging cable faulty; charging port obstructed.	Try a different USB Type-C cable. Ensure the charging port is clean and free of debris.

Problem	Possible Cause	Solution
Difficulty maneuvering inside the ear.	Unfamiliarity with mirror image; unique ear canal shape.	Practice gentle movements outside the ear first. Be aware that the image on screen is a mirror view. Some ear canal shapes may make visual inspection challenging.
Images/videos not saving to phone's gallery.	App saves to its own folder.	Access saved media directly through the "EndoscopeTool" app.

9. Specifications

Feature	Detail
Model	1926P FHD Wireless Otoscope
Manufacturer	VITCOCO
Camera Resolution	1920P FHD
Lens Diameter	3.0mm
Waterproof Rating	IP67 (Lens only)
Battery Capacity	230mAh
Charging Time	Approx. 30 minutes
Working Time	Approx. 70 minutes
Working Frequency	2.4GHZ
Temperature Control	Intelligent constant temperature (25-34°C)
Product Dimensions	18 x 8 x 3 cm
Product Weight	80 g
ASIN	B08FMJCH85
Date First Available	Aug. 11, 2020

10. Warranty and Support

Specific warranty details are not provided in this manual. For warranty information, technical support, or any inquiries regarding your VITCOCO Ear Wax Removal Tool, please contact VITCOCO customer service through their official website or the retailer where the product was purchased.