



[Manuals.plus](#) /

> [VSDISPLAY](#) /

> VSDISPLAY 10.3-inch LCD Screen HSD103KPW2-A10 User Manual

## VSDISPLAY HSD103KPW2-A10

# VSDISPLAY 10.3-inch LCD Screen HSD103KPW2-A10 User Manual

Model: HSD103KPW2-A10

[Introduction](#)   [Package Contents](#)   [Product Features](#)   [Setup Instructions](#)   [Operating Instructions](#)  
[Maintenance](#)   [Troubleshooting](#)   [Specifications](#)   [Warranty & Support](#)

## 1. INTRODUCTION

This manual provides detailed instructions for the setup, operation, and maintenance of your VSDISPLAY 10.3-inch LCD Screen with USB SD LCD Controller Board (Model HSD103KPW2-A10). Please read this manual thoroughly before using the product to ensure proper functionality and to prevent damage.

## 2. PACKAGE CONTENTS

Verify that all items listed below are included in your package. If any items are missing or damaged, please contact customer support.

- 1 × 10.3" HSD103KPW2-A10 1920x720 LCD Screen
- 1 × USB SD LCD Controller Board (AV input unavailable by default)
- 1 × Converter Board
- 1 × Signal Cable
- 1 × Keyboard with Cable

**Note: A power adapter is NOT included in the packing list. A 12Vdc, 2A or more power adapter is recommended.**



Figure 2.1: Included components in the package.

### 3. PRODUCT FEATURES

---

- **Display:** 10.3-inch HSD103KPW2-A10 LCD Screen with 1920x720 resolution.
- **Brightness:** 850 cd/m<sup>2</sup> (Typical).
- **Contrast Ratio:** 1000:1 (Typical).
- **Viewing Angle:** 85/85/85/85 (Typical) [Left / Right / Up / Down].
- **Controller Board:** USB SD LCD Controller Board for LVDS LCD Screens.
- **Audio:** USB SD Audio Input, Speaker and Earphone Audio Output.
- **Multimedia Support:** Supports MP4 and various other multimedia formats via USB and SD card.
- **Power Consumption:** Standby mode consumes less than 0.3W.

### 4. SETUP INSTRUCTIONS

---

Follow these steps to correctly assemble and connect your VSDISPLAY LCD screen and controller board.

#### 4.1 Controller Board Overview

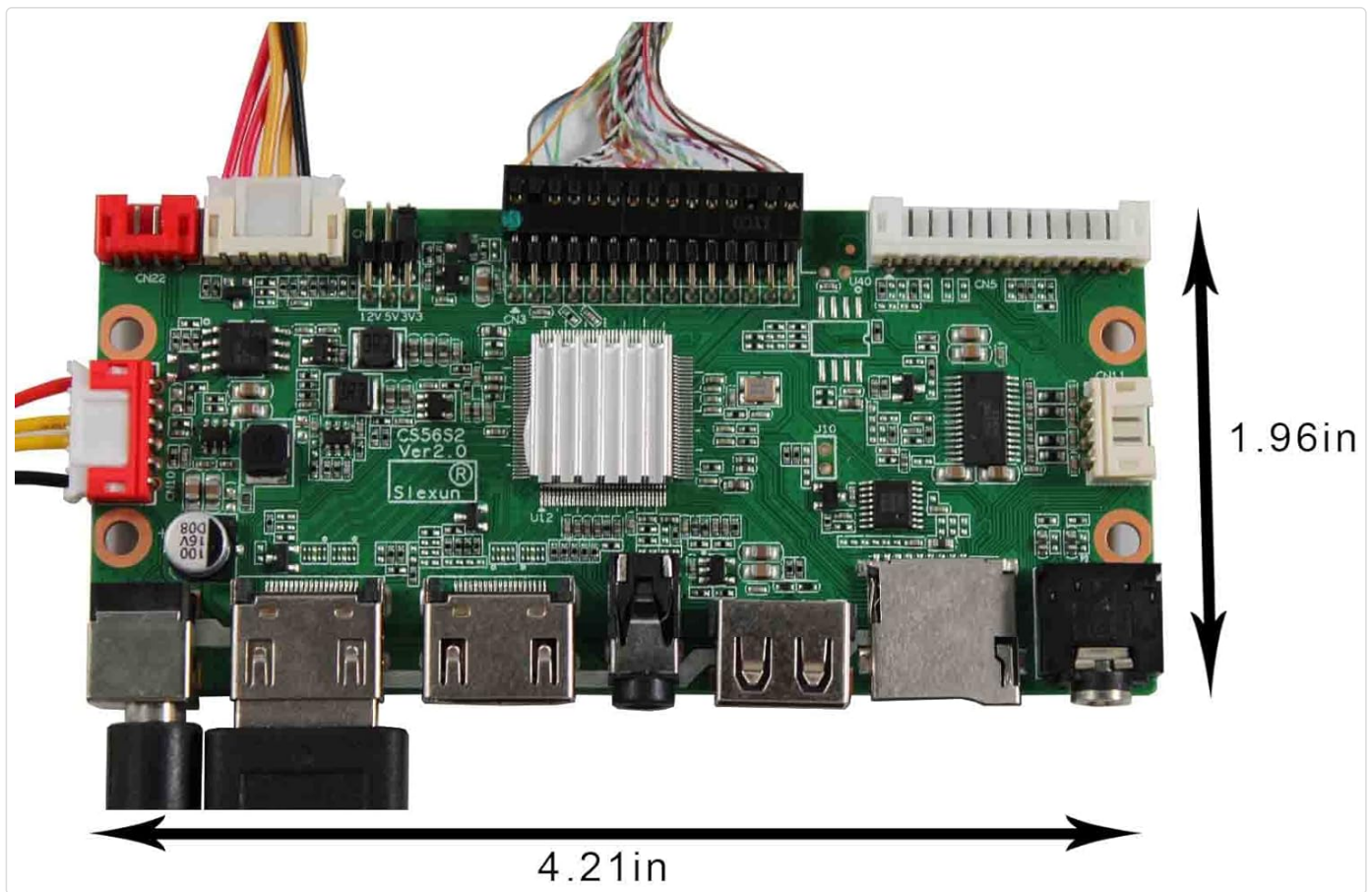


Figure 4.1: VSDISPLAY LCD Controller Board layout with labeled ports (DC-IN, Keyboard, LVDS Interface, VGA, Speaker, Earphone, HD1, HD2, CVBS, USB, SD Card, Inverter).

Familiarize yourself with the various ports and connectors on the controller board as shown in Figure 4.1.

## 4.2 Connecting the Components

1. **Connect the Keyboard Cable:** Attach the keyboard cable to the designated "Keyboard" port on the controller board.
2. **Connect the Inverter Cable:** Connect the inverter cable to the "Inverter" port on the controller board.
3. **Connect the Signal Cable (LVDS):** Carefully connect the signal cable to the "LVDS Interface" on the controller board. Ensure the orientation is correct: the circle dot on the cable port should correspond to the circle dot on the board. The dot on the back of the cable is square.
4. **Connect the Signal Cable to LCD Panel:** Attach the other end of the signal cable to the LCD panel. Ensure the black side of the connector is "up" and the metal side is "down" when inserting.
5. **Connect the Converter Board:** Connect the converter board to the appropriate port on the LCD panel.
6. **Connect Power:** Connect a 12Vdc power adapter (not included) to the DC-IN port on the controller board.
7. **Connect Video Source:** Connect your video source (e.g., PC, laptop, PS5) to one of the HDMI ports (HD1 or HD2) on the controller board.

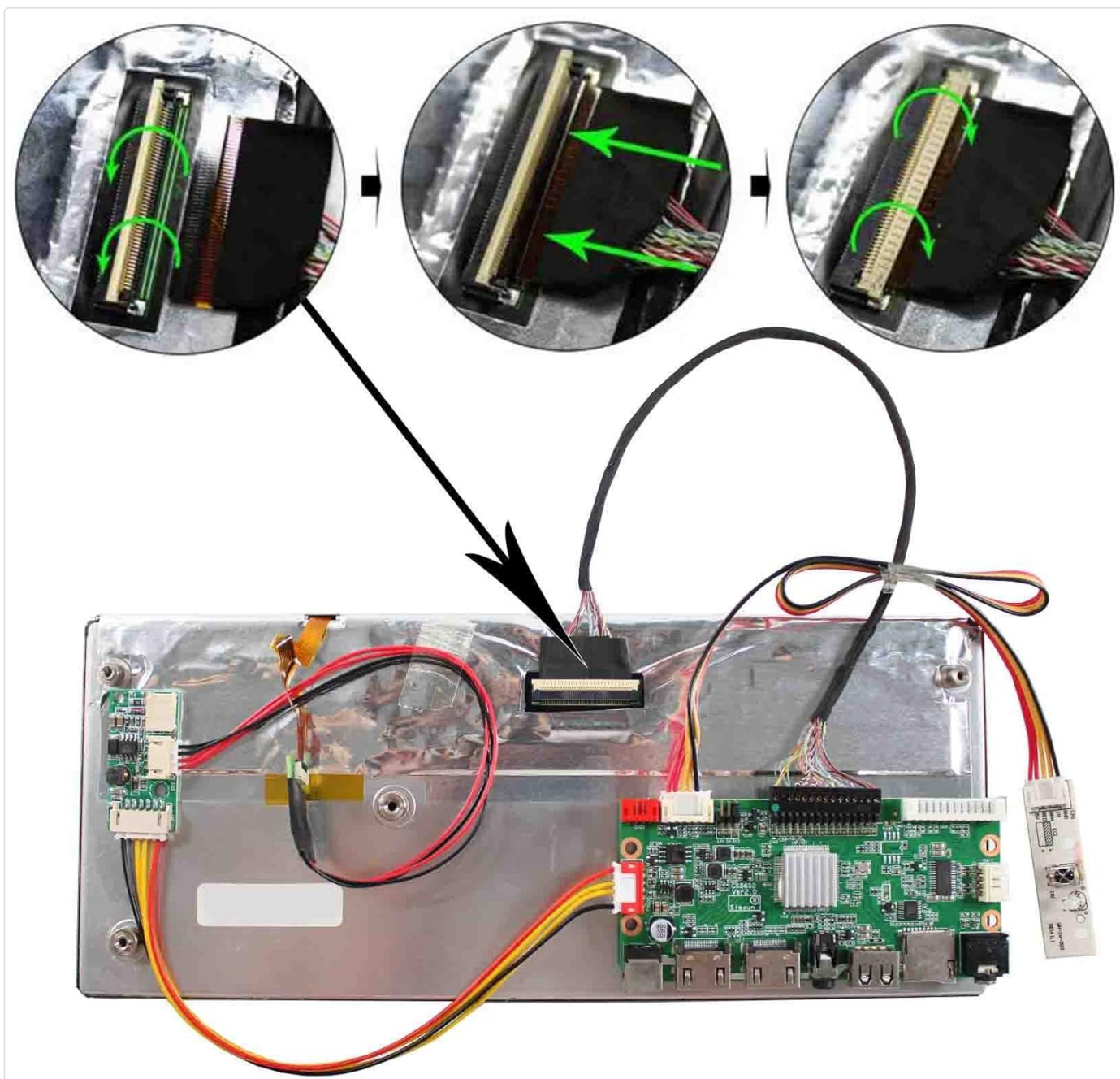


Figure 4.2: Detailed view of LCD panel ribbon cable connection.

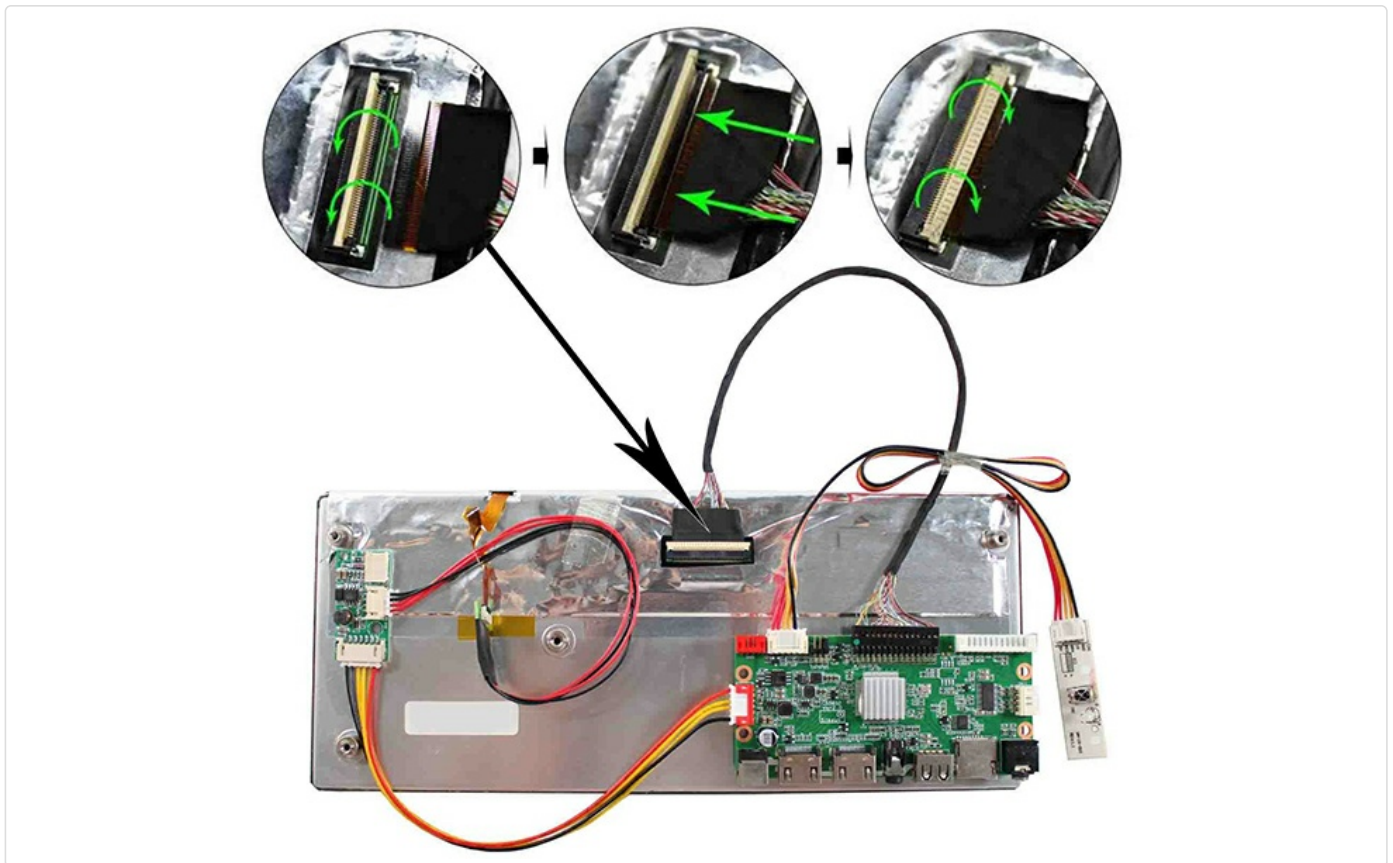


Figure 4.3: Overall connection diagram for the LCD screen kit.

### 4.3 Video Guide: Connecting the Controller Board

For a visual guide on connecting the controller board to the LCD display, please watch the video below.

Your browser does not support the video tag.

Video 4.1: This video demonstrates the step-by-step process of connecting the VSDISPLAY controller board to the 10.3-inch LCD display, including cable orientation and proper insertion techniques.

**Important: The controller board must not touch any conductive surfaces when powered on to prevent short circuits or damage.**

## 5. OPERATING INSTRUCTIONS

### 5.1 Power On/Off

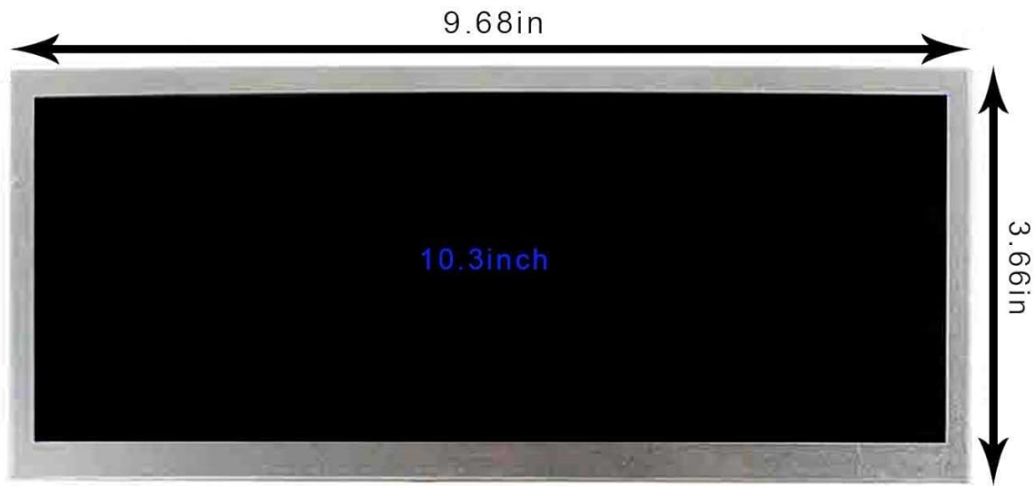
- To power on the display, ensure all connections are secure and plug in the 12Vdc power adapter.
- The display will enter standby mode if no signal is detected.
- To power off, disconnect the power adapter.

### 5.2 Input Selection

Use the provided keyboard with cable to navigate the display's menu and select input sources (HDMI, USB, SD Card, VGA).

### 5.3 Multimedia Playback (USB/SD Card)

The controller board supports multimedia playback directly from USB drives and SD cards. Insert your storage device into the respective port. Use the keyboard to browse and select media files.



## Shipping list



Figure 5.1: Supported Multimedia Playback Formats.

Refer to Figure 5.1 for a comprehensive list of supported video and audio formats, including maximum resolutions and data rates.

## 6. MAINTENANCE

### 6.1 Cleaning

- Always disconnect power before cleaning.
- Use a soft, dry cloth to wipe the screen and controller board.
- For stubborn marks on the screen, lightly dampen the cloth with water or a screen-safe cleaning solution. Do not spray liquid directly onto the screen or components.
- Avoid using abrasive cleaners, solvents, or alcohol-based solutions, as these can damage the surfaces.

### 6.2 Storage

When not in use for extended periods, store the display and components in a cool, dry place away from direct sunlight and extreme temperatures.

## 7. TROUBLESHOOTING

If you encounter issues with your VSDISPLAY LCD screen, refer to the following common problems and solutions:

Problem	Possible Cause	Solution
No display/Black screen	<ul style="list-style-type: none"><li>No power or incorrect power adapter.</li><li>Loose or incorrect cable connections (LVDS, HDMI).</li><li>No signal from the source device.</li></ul>	<ul style="list-style-type: none"><li>Ensure a 12Vdc, 2A or higher power adapter is used and properly connected.</li><li>Check all cable connections, especially the LVDS cable, for proper seating and orientation (refer to Section 4.2).</li><li>Verify the source device is powered on and outputting a signal. Try a different HDMI cable or source.</li></ul>
Display flickers or loses connection intermittently	<ul style="list-style-type: none"><li>Loose video cable connection.</li><li>Incompatible video signal or resolution.</li><li>Power supply instability.</li></ul>	<ul style="list-style-type: none"><li>Securely re-connect the HDMI or VGA cable.</li><li>Ensure your source device's output resolution is compatible with 1920x720.</li><li>Use a stable power supply that meets the recommended specifications (12Vdc, 2A+).</li></ul>
Image is not centered or has incorrect aspect ratio	<ul style="list-style-type: none"><li>Source device output resolution mismatch.</li><li>Display settings.</li></ul>	<ul style="list-style-type: none"><li>Adjust the output resolution on your source device to 1920x720.</li><li>Check the display's OSD (On-Screen Display) menu for image positioning or aspect ratio settings.</li></ul>
Light areas at the edge of the screen	<ul style="list-style-type: none"><li>Manufacturing variation.</li></ul>	<ul style="list-style-type: none"><li>This can sometimes be a characteristic of LCD panels. If it significantly impacts usability, contact customer support.</li></ul>
No audio output	<ul style="list-style-type: none"><li>No speakers connected or earphone not properly inserted.</li><li>Audio source not configured.</li></ul>	<ul style="list-style-type: none"><li>Ensure speakers are connected to the "Speaker" port or earphones to the "Earphone" port.</li><li>Verify the audio output settings on your source device.</li><li>Note: If earphones are connected, external speaker output is muted.</li></ul>

## 8. SPECIFICATIONS

Feature	Detail
Brand	VSDISPLAY
Model Number	HSD103KPW2-A10
Screen Size	10.3 Inches
Resolution	1920x720
Display Type	LCD
Brightness	850 cd/m <sup>2</sup> (Typical)
Contrast Ratio	1000:1 (Typical)

Feature	Detail
Viewing Angle	85/85/85/85 Degrees (Left/Right/Up/Down)
Refresh Rate	60 Hz
Response Time	5 Milliseconds
Power Input (Recommended)	12Vdc, >2A
Standby Power Consumption	<0.3W
Multimedia Support	MP4, various video/audio formats via USB/SD card
Item Dimensions (D x W x H)	0.62"D x 10.23"W x 4.41"H

## 9. WARRANTY AND SUPPORT

### 9.1 Warranty Information

Specific warranty details for the VSDISPLAY 10.3-inch LCD Screen (Model HSD103KPW2-A10) are typically provided at the point of purchase or can be obtained directly from the manufacturer. Please retain your proof of purchase for warranty claims.

### 9.2 Customer Support

For technical assistance, troubleshooting not covered in this manual, or warranty inquiries, please contact VSDISPLAY customer support through their official website or the retailer where the product was purchased.