

## MaxAuto 24X12.00-12

# MaxAuto 24x12.00-12 Super Lug Ag Farm Tractors Rear Tires Instruction Manual

Model: 24X12.00-12 | Brand: MaxAuto

## 1. INTRODUCTION

---

This manual provides essential information for the proper installation, operation, and maintenance of your MaxAuto 24x12.00-12 Super Lug Ag Farm Tractors Rear Tires. These heavy-duty 6-ply tubeless tires are designed for maximum pulling and pushing power, featuring sharp angled tread elements. They are commonly used on garden tractors, tillers, trenchers, and other farm equipment.

### Key Features:

- **Enhanced Traction:** Sharp angled tread elements provide superior grip for various terrains.
- **Durable Construction:** Heavy-duty 6-ply rating ensures longevity and resistance to punctures.
- **Versatile Application:** Ideal for a wide range of agricultural and lawn care machinery.
- **Tubeless Design:** Simplifies maintenance and reduces the risk of sudden deflation.
- **Non-Highway Service (NHS):** Designed specifically for off-road and low-speed applications.



Image 1.1: A pair of MaxAuto 24x12.00-12 Super Lug Ag Farm Tractor Rear Tires.

## 2. SETUP & INSTALLATION

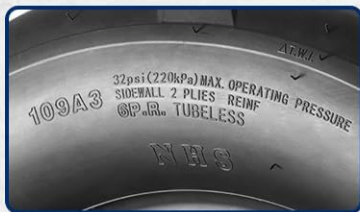
---

Proper installation is crucial for optimal performance and safety. Please follow these guidelines carefully.

### 2.1 Pre-Installation Check

- **Verify Tire Size:** Before purchase and installation, confirm that the tire size 24x12.00-12 matches the original tire specifications on your vehicle. Refer to your mower or tractor manual for recommended tire dimensions.
- **Inspect Tires:** Ensure tires are free from any visible damage or defects upon arrival.

# 24X12.00-12



## LAWN TRACTOR TIRES

Lawn &  
Garden



Image 2.1: Close-up view of the tire sidewall indicating the size 24x12.00-12.

### 2.2 Package Contents

This product includes a set of two 24x12.00-12 lawn tractor tires. Wheels are not included. Please note that tires may arrive in separate packages on different days. If you receive only part of your order, please allow 1-2 additional days for the remaining package(s) to arrive.



## PLEASE NOTE:

This set includes **2 tires** shipped in **2 packages**. One of them may arrive earlier, the other one may come later.



Image 2.2: Illustration depicting the delivery of two tires in separate packages.

## 2.3 Tire Inflation

Inflate the tires to the pressure specified in your mower or tractor manual. The maximum load for these tires is 2270 lbs at 32 psi. Proper inflation is essential for the sunken tread design to make optimal contact with the ground, providing maximum grip.

Video 2.1: This video demonstrates how to find the correct tire replacement for your mower, emphasizing size verification.

Video 2.2: This video clarifies the quantity of tires included in a typical package.

## 3. OPERATING INSTRUCTIONS

---

These tires are designed for specific applications to maximize their performance and lifespan.

### 3.1 Intended Use

MaxAuto 24x12.00-12 Super Lug tires are primarily intended for:

- Garden Tractors
- Tillers
- Trenchers
- Riding Lawn Mowers
- Other Farm Equipment

## MAJOR APPLICATIONS

Garden Tractors; Tillers; Trenchers;  
Other Farm equipment.



Image 3.1: Examples of major applications for MaxAuto Super Lug tires.

### 3.2 Traction Performance

The super lug tread pattern provides excellent traction, especially on soft ground, slopes, and uneven terrain. This design helps prevent slipping and spinning, improving control and efficiency during operation.



Image 3.2: Illustration of the V-shaped directional tread pattern for improved water dispersion and low rolling resistance, unique rubber compound for durability, and 6-ply construction for heavy-duty applications.

### 3.3 Speed Limitations

These tires belong to the NHS (Non-Highway Service) series and are not suitable for high-speed service. Always operate your equipment within safe speed limits appropriate for the terrain and conditions.

## 4. MAINTENANCE

---

Regular maintenance ensures the longevity and safe operation of your MaxAuto tires.

### 4.1 Tire Pressure

Check tire pressure regularly before each use. Maintain the recommended pressure as specified in your vehicle's manual. Incorrect tire pressure can lead to premature wear, reduced traction, and potential safety hazards.

### 4.2 Cleaning and Inspection

After each use, inspect the tires for any embedded debris, cuts, or punctures. Remove any grass, mud, or foreign objects from the tread. Clean the tires with water and a mild detergent if necessary. Store equipment with clean tires in a cool, dry place away from direct sunlight and harsh chemicals.

## 5. TROUBLESHOOTING

---

Here are some common issues and their potential solutions:

- **Poor Traction:** Ensure tires are inflated to the correct pressure. Verify that the tire type is appropriate for the terrain (e.g., Super Lug for soft ground/slopes).
- **Tire Damage:** For minor punctures, tubeless tires may be repaired. For significant cuts or sidewall damage, replacement is recommended. Consult a professional for tire repair or

replacement.

- **Difficulty During Installation:** Tire installation can be challenging due to stiffness. Using appropriate tire spoons and bead lubricant can assist. If you lack the necessary tools or experience, professional installation is advised.

## 6. SPECIFICATIONS

---

Specification	Value
Tire Size	24x12.00-12"
Tire Load Range	6PR/C
Tread Depth	0.62" / 15.8mm
Rim Width	9.5"
Section Width	11.9" / 304mm
Outer Diameter	23.79" / 610mm
Speed Index	9A3
Max Load	2270lbs @ 32 psi
Tread Type	Directional
Construction Type	B
Tubeless	Yes
Item Weight	51.4 pounds (23330 Grams)

# TIRE SPECIFICATIONS

Tire Size:	24x12.00-12
Rim Diameter(in):	12
Section Width(mm):	304
Rim Width(in):	9.5
Tire Load Range:	C/6PR
Load Rating:	109
Speed Index:	A3
Tread Depth(mm):	15.8
Max PSI:	32
TL:	Tubeless Tire



Image 6.1: Detailed tire specifications for the 24x12.00-12 model.

## 7. WARRANTY AND SUPPORT

Your MaxAuto tires are eligible for returns until January 31, 2026. For any product-related inquiries, technical assistance, or warranty claims, please contact MaxAuto customer support. Detailed contact information can typically be found on the product packaging or the official MaxAuto website.

Video 7.1: This video provides insight into the MaxAuto tire production process, highlighting quality and manufacturing standards.

Video 7.2: A general overview of MaxAuto Lawn & Garden Tires, showcasing their features and benefits.