

- › [SIIG](#) /
- › [SIIG 4K DisplayPort 2-Port KVM Switch \(CE-DP0F11-S1\) User Manual](#)

SIIG CE-DP0F11-S1

SIIG 4K DisplayPort 2-Port KVM Switch User Manual

Model: CE-DP0F11-S1 | Brand: SIIG

- [Overview](#)
- [Setup](#)
- [Operation](#)
- [Features](#)
- [Maintenance & Support](#)
- [Introduction](#)
- [Product](#)
- [Troubleshooting](#)
- [Specifications](#)
- [Warranty](#)

1. INTRODUCTION

The SIIG 4K DisplayPort 2-Port KVM Switch (Model: CE-DP0F11-S1) allows you to control two DisplayPort 1.2 computers using a single set of keyboard, mouse, and monitor. This device supports 4K video resolution at 60Hz, USB 3.0 peripherals, and audio/microphone connections, enhancing productivity and workspace organization.



Image: The KVM switch facilitates efficient switching between multiple 4K UHD devices using front panel buttons or keyboard hotkeys.

2. PRODUCT OVERVIEW

2.1 Front Panel

The front panel provides convenient access for switching between connected computers and connecting USB peripherals.

- **PC Switch Buttons (PC1, PC2):** Press these buttons to manually switch control between Computer 1 and Computer 2.
- **USB 3.0 Ports (x2):** Connect USB 3.0 devices such as flash drives, external hard drives, or other high-speed peripherals.

2.2 Rear Panel

The rear panel houses all the primary connection ports for your computers, monitor, keyboard, mouse, and audio devices.

- **DC 12V Power Jack:** Connect the included power adapter here.
- **Power LED:** Indicates the power status of the KVM switch.
- **Micro USB Port (FW):** Used for firmware updates.
- **USB 3.0 Ports (x2):** Connect additional USB 3.0 peripherals.
- **Audio Out (3.5mm):** Connect speakers or headphones.
- **Mic In (3.5mm):** Connect a microphone.
- **PC1/PC2 DisplayPort In (x2):** Connect DisplayPort cables from Computer 1 and Computer 2.
- **PC1/PC2 USB 3.0 / Mic / Audio (x2):** Connect USB 3.0 cables and audio/mic cables from Computer 1 and Computer 2.
- **DisplayPort Output:** Connect your monitor's DisplayPort cable here.
- **DIP Switch:** Used for signal level enhancement (EQ settings).
- **Keyboard/Mouse Port (USB 2.0):** Dedicated USB ports for connecting your keyboard and mouse.



Image: Detailed diagram of the KVM switch's front and rear panel connections.

3. SETUP INSTRUCTIONS

Follow these steps to set up your SIIG 4K DisplayPort 2-Port KVM Switch:

1. **Power Off Devices:** Ensure both computers and your monitor are powered off before making any connections.
2. **Connect Monitor:** Connect your DisplayPort monitor to the **DisplayPort Output** port on the rear panel of the KVM switch.
3. **Connect Keyboard & Mouse:** Connect your USB keyboard and mouse to the dedicated **Keyboard/Mouse Port** (USB 2.0) on the rear panel.
4. **Connect Computers (PC1 & PC2):**
 - Connect a DisplayPort cable from Computer 1 to the **PC1 DisplayPort In** port. Repeat for Computer 2 to **PC2 DisplayPort In**.

- Connect a USB 3.0 cable from Computer 1 to the **PC1 USB 3.0 / Mic / Audio** port. Repeat for Computer 2 to **PC2 USB 3.0 / Mic / Audio**.
5. **Connect Audio Devices:** If using external speakers/headphones and a microphone, connect them to the **Audio Out** and **Mic In** ports on the rear panel.
 6. **Connect USB Peripherals:** Connect any additional USB 3.0 peripherals (e.g., printer, flash drive) to the **USB 3.0 ports** on either the front or rear panel.
 7. **Power On:** Connect the included power adapter to the **DC 12V Power Jack** and then plug it into a power outlet. The Power LED will illuminate.
 8. **Power On Computers & Monitor:** Power on your computers and monitor. The KVM switch should automatically detect the active computer.

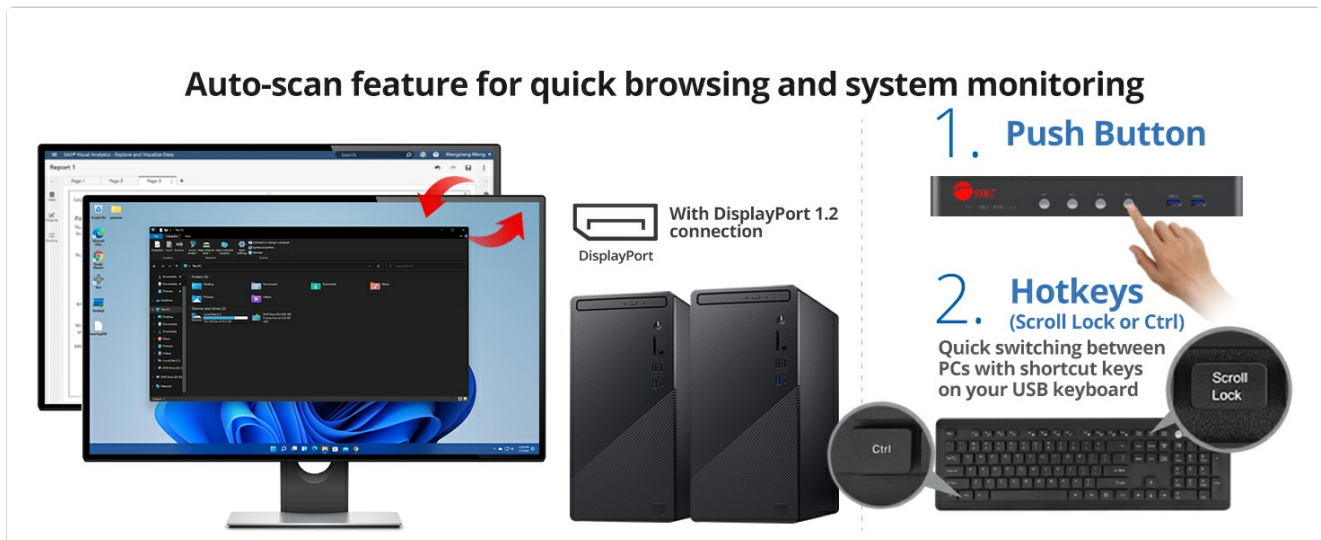


Image: The KVM switch allows connection of various devices including keyboard, mouse, USB peripherals, headphones, microphone, and a display.

4. OPERATING INSTRUCTIONS

4.1 Switching Between Computers

You can switch between connected computers using two methods:

- **Front Panel Push Buttons:** Press the **PC1** or **PC2** button on the front panel to switch to the corresponding computer. The LED indicator will show which computer is active.
- **Keyboard Hotkeys:** Use the following hotkey sequence on your connected keyboard:
[Scroll Lock] + [Scroll Lock] + [Number] + [Enter]
 Replace **[Number]** with '1' for PC1 or '2' for PC2. For example, to switch to PC1, press Scroll Lock twice, then '1', then Enter.

4.2 Auto-Scan Feature

The KVM switch supports an auto-scan feature for quick browsing and system monitoring.

- **Activate Auto-Scan:** Press the hotkey sequence:
[Scroll Lock] + [Scroll Lock] + [S]
 This will initiate an automatic scan, cycling through the connected computers.
- **Exit Auto-Scan:** Press any key to stop the auto-scan function.

4.3 Signal Level Enhancement (EQ)

The DIP switch on the rear panel allows for signal level enhancement (EQ) to optimize DisplayPort signal quality, especially with longer cables or specific display setups. Refer to the product's full manual for detailed settings and recommendations for the DIP switch positions.

5. KEY FEATURES

- **High-Performance Workstation:** Control two DisplayPort 1.2 computers with a single keyboard, mouse, and monitor.
- **Superior Video Quality:** Supports resolutions up to 3840x2160 @60Hz YUV 4:4:4 8-bit, 3D, and Deep Color.
- **MST Passthrough:** Allows for multiple displays when supported by the connected graphics card and monitor.
- **High Bandwidth:** Offers a true 21.6Gbps video bandwidth.
- **Advanced Audio Support:** Supports 7.1ch surround sound or stereo audio, including PCM, DTS-HD, Dolby Digital, and Dolby TrueHD.
- **Multiple USB Ports:** Features 4x USB 3.0 Type-A ports for various USB peripherals (flash drives, printers) and 2x USB 1.1 ports for keyboard and mouse.
- **Hotkey & Push Button Control:** Easy switching between computers via front panel buttons or USB keyboard hotkeys.
- **Firmware Updatable:** Includes a Micro USB port for future firmware updates.
- **Robust Construction:** Durable metal housing for enhanced longevity and ESD protection.
- **TAA Compliant:** Meets Trade Agreements Act requirements.

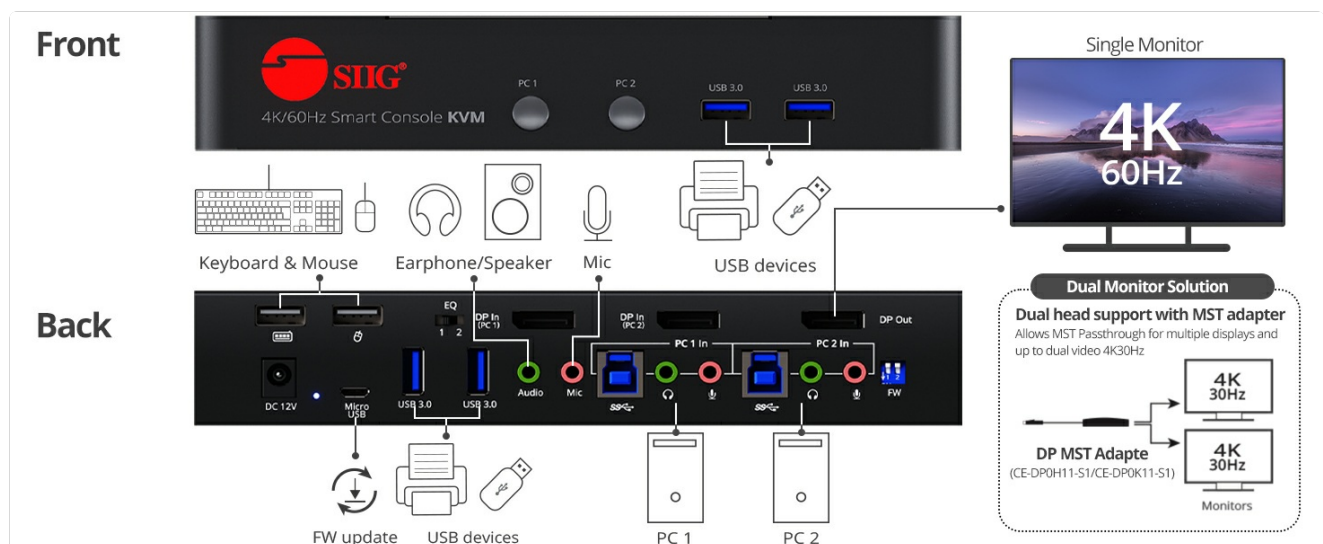


Image: The KVM switch supports a true 21.6Gbps video bandwidth and 7.1 channel surround sound or stereo audio.



Image: The KVM switch features a sturdy metal construction.



Image: The KVM switch is TAA Compliant.

6. MAINTENANCE

- **Cleaning:** Use a soft, dry cloth to clean the device. Avoid liquid cleaners or solvents.
- **Firmware Updates:** Periodically check the SIIG website for available firmware updates to ensure optimal performance and compatibility. Firmware updates can be applied via the Micro USB port on the rear panel.
- **Cable Management:** Ensure all cables are securely connected and organized to prevent accidental disconnections or damage.

7. TROUBLESHOOTING

If you encounter issues with your KVM switch, refer to the following common troubleshooting steps:

- **No Display:**
 - Ensure all DisplayPort cables are securely connected between the computers, KVM, and monitor.
 - Verify the monitor is powered on and set to the correct input source.

- Try restarting the KVM switch and computers.
- Check the DIP switch settings for signal level enhancement.

- **Keyboard/Mouse Not Responding:**

- Ensure the keyboard and mouse are connected to the dedicated **Keyboard/Mouse Port** on the rear panel.
- Try connecting the keyboard/mouse directly to the computer to confirm they are functional.
- Some advanced gaming keyboards/mice may require direct connection to a computer or may not fully support KVM hotkeys. Use the front panel buttons for switching if hotkeys are problematic.

- **USB Peripherals Not Detected:**

- Ensure the USB 3.0 cables from the computers are connected to the KVM's **PC1/PC2 USB 3.0 / Mic / Audio** ports.
- Try connecting the peripheral to a different USB port on the KVM or directly to the computer.

- **No Audio/Microphone:**

- Verify audio cables are correctly connected to the **Audio Out** and **Mic In** ports on the KVM and to your speakers/headphones/microphone.
- Check audio settings on your operating system to ensure the correct output/input device is selected.

8. SPECIFICATIONS

Brand	SIIG
Model Number	CE-DP0F11-S1
Operation Mode	Push Button, Slide Switch
Current Rating	2 Amps
Operating Voltage	12 Volts
Connector Type	USB, DisplayPort, 3.5mm Audio
Material	Metal
Item Dimensions (L x W x H)	4.38 x 7.95 x 1.43 inches
Item Weight	1.54 pounds
Color	Black
Wattage	24 watts
International Protection Rating	IP54
Temperature Rating (Lower)	32 Degrees Fahrenheit
Temperature Rating (Upper)	104 Degrees Fahrenheit

9. WARRANTY & SUPPORT

9.1 Warranty Information

This SIIG KVM Switch is backed by a **3-year warranty**. This warranty covers defects in materials and workmanship under normal use. Please retain your proof of purchase for warranty claims.

9.2 Technical Support & Firmware Upgrades

SIIG provides continuous service for firmware upgrades to ensure your product performs at its best for an extended period. For technical assistance, updated drivers, or the latest firmware, please visit the official SIIG website or contact their customer support.

Your browser does not support the video tag.

Video: An overview of the SIIG CE-DP0F11-S1 4K DisplayPort 2-Port KVM Switch, demonstrating its features, connections, and switching capabilities.