

Philips AWP212/10

Philips AWP212/10 Micro X-Clean Water Filter Instruction Manual

1. INTRODUCTION AND OVERVIEW

The Philips AWP212/10 Micro X-Clean water filter is designed to provide cleaner, better-tasting water by reducing various impurities. This filter is compatible with all Philips Micro X-Clean filter jugs, Brita Maxtra, Maxtra+, and most other oval-shaped filter jugs.

Key benefits include:

- **Enhanced Water Taste:** Enjoy crisp and pure-tasting water for drinking and preparing beverages.
- **Reduced Contaminants:** Effectively reduces microplastics, chlorine, limescale, heavy metals, PFOA, lead, and pesticides.
- **Appliance Protection:** Helps prevent limescale build-up, prolonging the lifetime of kitchen appliances such as kettles and coffee machines.
- **Environmental Benefit:** Provides great-tasting water at a fraction of the cost and waste associated with bottled water.



Figure 1: Philips Micro X-Clean Water Filter



The advertisement features a white Philips water filter against a blue background. The filter has a grey top with the 'PHILIPS' logo. To the right of the filter is an orange circular badge with the text 'BRITA compatible' and a circular arrow icon. Below the filter, the text '20 % faster' is highlighted in bold. Further down, a visual equation shows '100 l' followed by a glass icon, then '= 200 x' followed by a small bottle icon labeled '0,5 l PET'.

PHILIPS

BRITA compatible

20 % **faster** filtration compared to other models on the market

= 100 l  = 200 x 

Figure 2: Filter compatibility and performance overview



Figure 3: Contaminants reduced by the filter

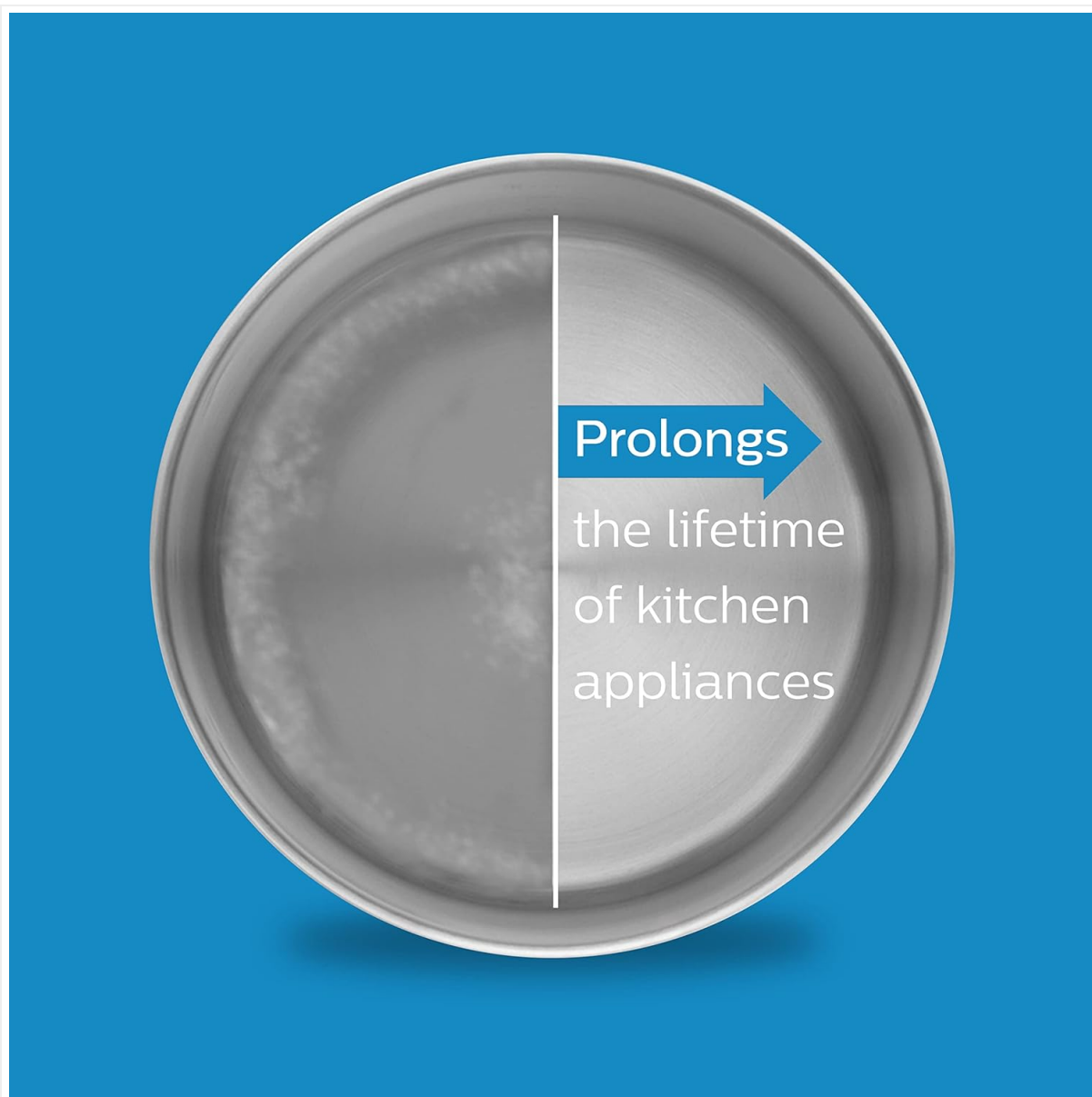


Figure 4: Appliance protection benefit

2. SETUP AND FIRST USE

Follow these steps to activate your Philips Micro X-Clean filter before its first use:

1. **Step 1: Prepare the Filter.** Submerge the new filter completely in cold tap water for approximately 15 minutes. Gently shake the filter while submerged to release any air bubbles.
2. **Step 2: Insert the Filter.** Insert the activated filter firmly into the designated compartment of your water filter jug. Ensure it is seated correctly to prevent unfiltered water from bypassing the filter.
3. **Step 3: Flush the Filter.** Fill the jug with water and allow it to filter through. Discard the first two filtered batches of water. This flushes out any loose carbon particles and prepares the filter for optimal performance.
4. **Step 4: Ready for Use.** Your filter is now ready for regular use.

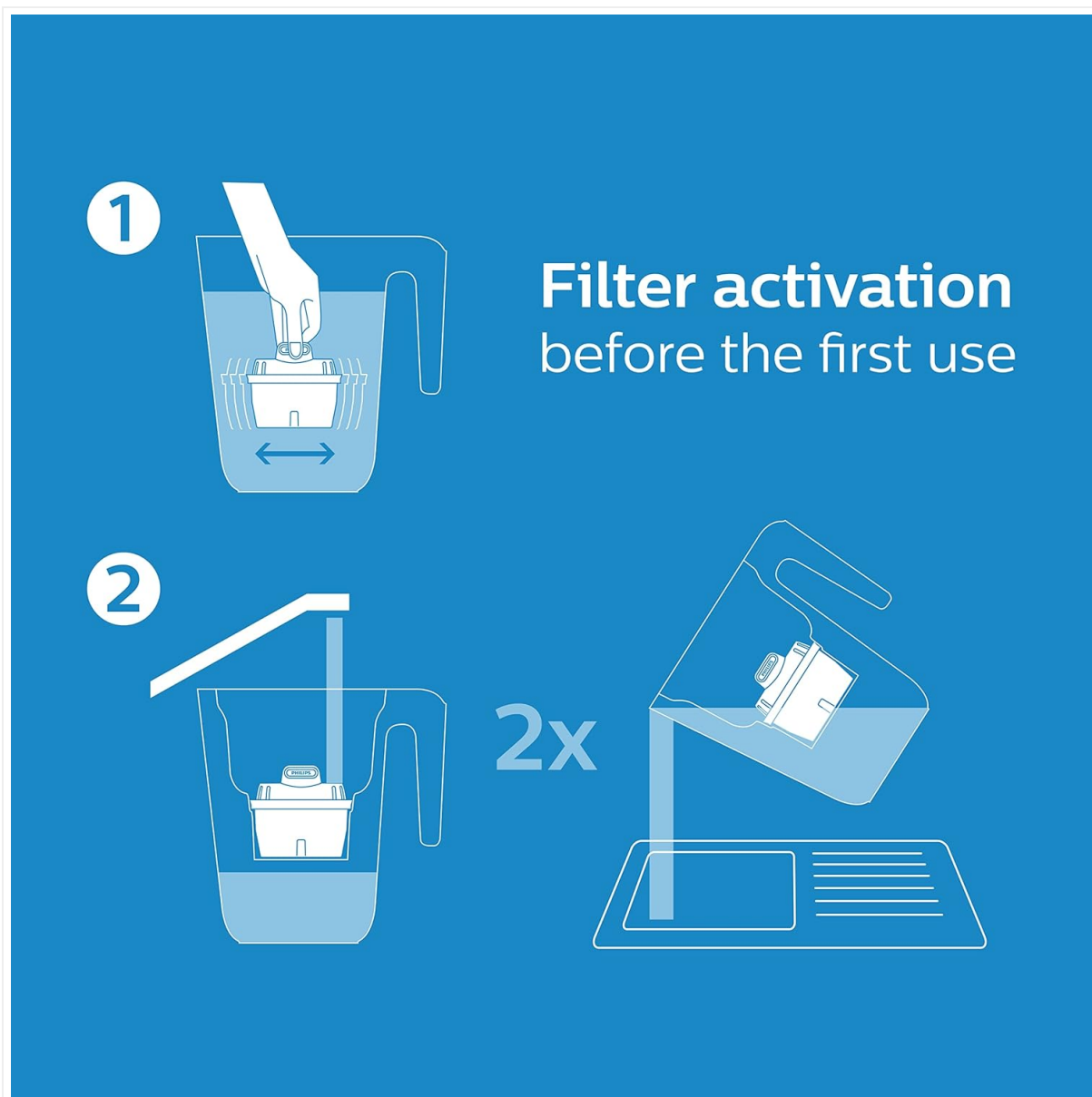


Figure 5: Filter activation before first use

3. OPERATING INSTRUCTIONS

Once the filter is activated and installed, simply fill your water filter jug with cold tap water. The water will pass through the Micro X-Clean filter, which utilizes advanced filtration technology, including activated carbon derived from coconut shells, to remove impurities.



Figure 6: Filter technology utilizing activated carbon

The filter is designed for fast flow, providing filtered water efficiently. Each filter cartridge has a capacity of up to 100 liters or lasts for approximately 30 days, whichever comes first. For optimal performance and water quality, adhere to the recommended replacement schedule.

4. MAINTENANCE

Filter Replacement

Replace the Philips Micro X-Clean filter cartridge every 30 days or after filtering 100 liters of water, depending on which occurs first. Regular replacement ensures consistent water quality and filtration efficiency.

1. Remove the old filter from the jug.
2. Dispose of the used filter responsibly according to local regulations.
3. Follow the 'Setup and First Use' instructions (Section 2) for the new filter.

Cleaning the Water Jug

Regularly clean your water filter jug according to the manufacturer's instructions for the jug itself. This typically involves washing with mild detergent and rinsing thoroughly. Do not wash the filter cartridge with soap or detergent.

5. TROUBLESHOOTING

If you experience issues with your Philips Micro X-Clean filter, consider the following:

- **Slow Filtration:** Ensure the filter was properly activated by submerging and shaking it to remove air bubbles. If the filter is old, it may be clogged and require replacement.
- **Unusual Taste or Odor:** This indicates the filter may be exhausted or improperly installed. Re-check installation or replace the filter if it has reached its capacity or age limit.
- **Water Leaking Around Filter:** Ensure the filter is securely seated in the jug's compartment. Remove

and re-insert it firmly.

If problems persist after following these steps, please contact Philips customer support.

6. SPECIFICATIONS

Model Number	AWP212/10
Brand	Philips
Material	Plastic
Filter Capacity	100 Liters or 30 Days
External Testing Certification	NSF
Compatibility	Philips Micro X-Clean jugs, Brita Maxtra, Maxtra+ and most other oval-shaped filter jugs

7. SAFETY INFORMATION

- Use the filter only with cold tap water. Do not use with hot water.
- Do not filter water that is microbiologically unsafe or of unknown quality without adequate disinfection before or after the system.
- Do not expose the filter to direct sunlight or extreme temperatures.
- Keep out of reach of children.
- If the filter has been frozen, discard it and replace with a new one.

8. WARRANTY AND SUPPORT

For warranty information or technical support regarding your Philips AWP212/10 Micro X-Clean water filter, please refer to the documentation provided with your purchase or visit the official Philips website. You can also contact Philips customer service directly for assistance.

Please retain this instruction manual for future reference.