

[Manuals.plus](#) /

> [GLEDOPTO](#) /

> GLEDOPTO Zigbee RGB CCT USB LED Strip Light 2M User Manual

GLEDOPTO GL-C-001

GLEDOPTO Zigbee RGB CCT USB LED Strip Light 2M User Manual

Model: GL-C-001

PRODUCT OVERVIEW

The GLEDOPTO Zigbee RGB CCT USB LED Strip Light 2M Smart Kit provides versatile smart lighting for various applications. This kit includes a mini USB Zigbee RGB CCT LED controller and a 2-meter waterproof RGB CCT LED tape light. It is designed to work with standard Zigbee gateways, offering extensive compatibility with smart home systems.

Key features include 16 million RGB color options, tunable white light (warm white to cool white), brightness adjustment, and control via smartphone apps or voice commands through compatible Zigbee hubs.

5V Waterproof IP65 RGB+WW+CW LED Strip Light



Image: The GLEDOPTO Zigbee RGB CCT LED Strip Light Kit, showing the mini controller, LED strip, and smartphone app interface.



Image: A coiled GLEDOPTO 5V Waterproof IP65 RGB+W+W+CW LED Strip Light, highlighting its flexible design and individual LED chips.

PACKAGE CONTENTS

Please verify that all items are present in your package:

- 1x Zigbee RGCCT Mini Controller
- 1x 2-meter USB RGCCT LED Strip Light
- 1x Operating Instruction Manual

Scene display

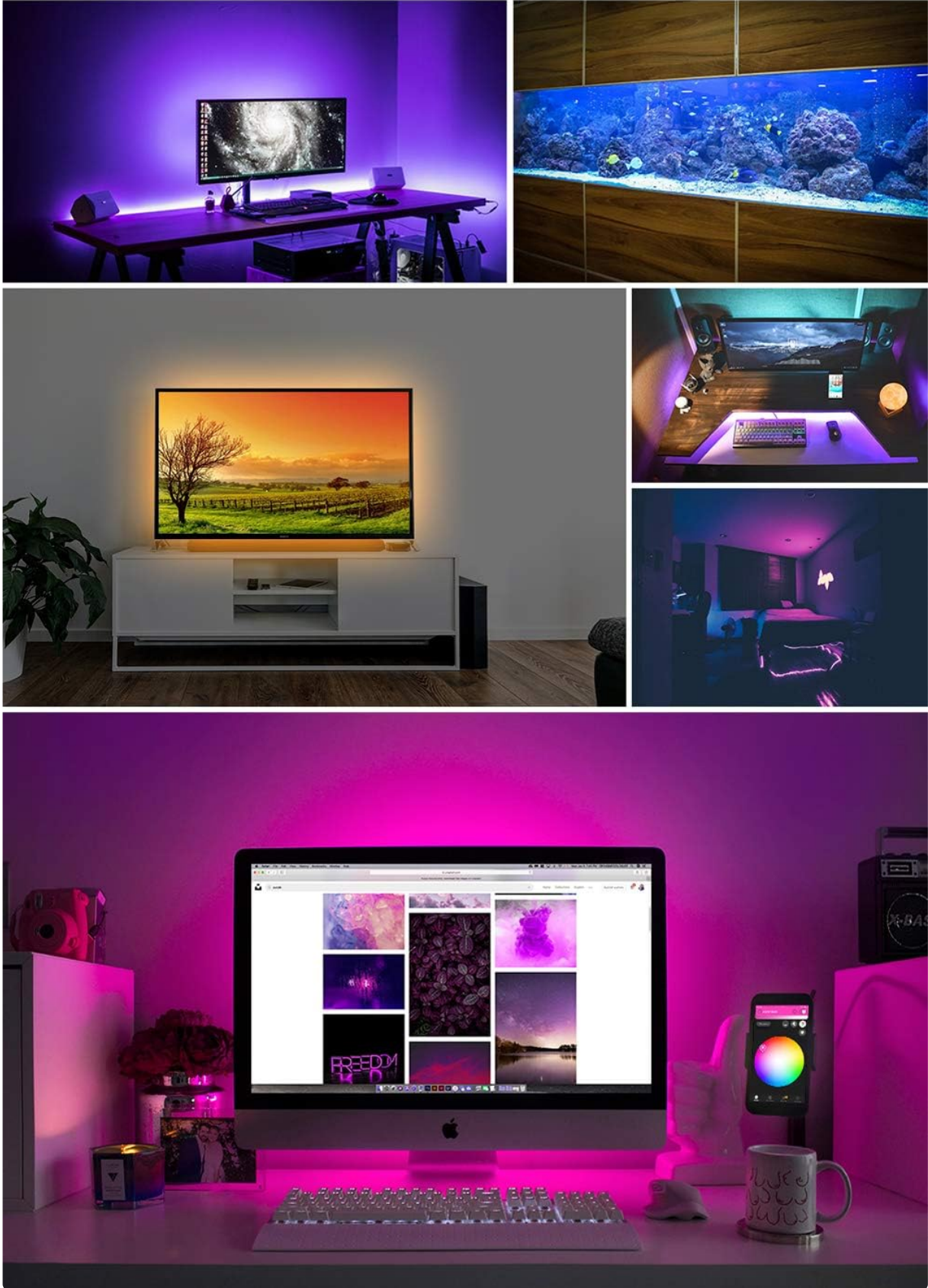


Image: The contents of the GLEDOPTO LED Strip Kit, including the mini controller, 2-meter LED strip, and user manual.

SAFETY INFORMATION

Please read and follow these important safety guidelines:

- **Power Supply:** The kit uses USB DC 5V power. Do NOT attempt to use higher voltage power sources, as this will damage the device.
- **Zigbee Hub Required:** A Zigbee hub or gateway is essential for the controller to function. The controller will not operate independently.
- **Compatibility:** The adapter is designed for Zigbee communication and is not compatible with Wi-Fi or Bluetooth-only devices. For example, the 2nd and 3rd generation Amazon Echo Dot models are not supported unless they have a built-in Zigbee hub (like Echo Plus).
- **Water Resistance:** The LED strip light is IP65 waterproof, suitable for indoor use where it might encounter splashes. However, the mini controller is NOT waterproof and must be protected from moisture.

SETUP INSTRUCTIONS

Follow these steps to set up your GLEDOPTO LED Strip Light:

1. **Connect the LED Strip:** Plug the 2-meter LED strip light into the output port of the Zigbee mini controller. Ensure the connection is secure.
2. **Power the Controller:** Connect the mini controller's USB input to a 5V USB power source. This can be a computer USB port, a TV USB port, or a standard USB phone charger.
3. **Prepare your Zigbee Gateway:** Ensure your Zigbee hub (e.g., Philips Hue Bridge, Samsung SmartThings Hub, Amazon Echo Plus) is powered on and in pairing mode. Refer to your specific gateway's instructions for how to initiate pairing.
4. **Pair the Device:** Once your gateway is in pairing mode, the GLEDOPTO controller should be discovered automatically. If not, you may need to initiate a device search within your gateway's app. The LED strip will typically flash or change color to indicate successful pairing.
5. **Mount the Strip:** The LED strip has 3M adhesive tape on its backside. Clean the desired surface thoroughly before peeling off the protective layer and firmly pressing the strip into place.

OPERATING INSTRUCTIONS

Voice Control

Once paired with a compatible Zigbee hub that supports voice assistants (e.g., Amazon Echo Plus for Alexa, or Google Home via a compatible hub), you can control your LED strip using voice commands.

- **Turn On/Off:** "Alexa, turn on the [Light Name]" or "Alexa, turn off the [Light Name]".
- **Change Color:** "Alexa, set [Light Name] to blue" or "Alexa, change [Light Name] to red."
- **Adjust Brightness:** "Alexa, dim [Light Name] to 50%" or "Alexa, brighten [Light Name]."

Mini Controller

ZIGBEE

» RGB CCT STARTER KIT «



16 million colors
changing



Color temp
2700K-6500K



Brightness
adjustment



Voice
control



Smart phone
APP control

5V 2M LED Strip light



Image: An Amazon Echo Plus device responding to a voice command to change the LED strip light color to blue, demonstrating voice control functionality.

Smartphone App Control

Control your LED strip light using the dedicated app for your Zigbee gateway (e.g., Philips Hue app, SmartThings app). The app allows for comprehensive control over various lighting aspects.

- **Color Selection:** Choose from over 16 million colors to create your desired ambiance.
- **Tunable White:** Adjust the white light temperature from warm white to cool white (2700K-6500K).
- **Brightness Adjustment:** Dim or brighten the lights to any desired level.
- **Scene Creation:** Create and save custom lighting scenes for different moods or activities.

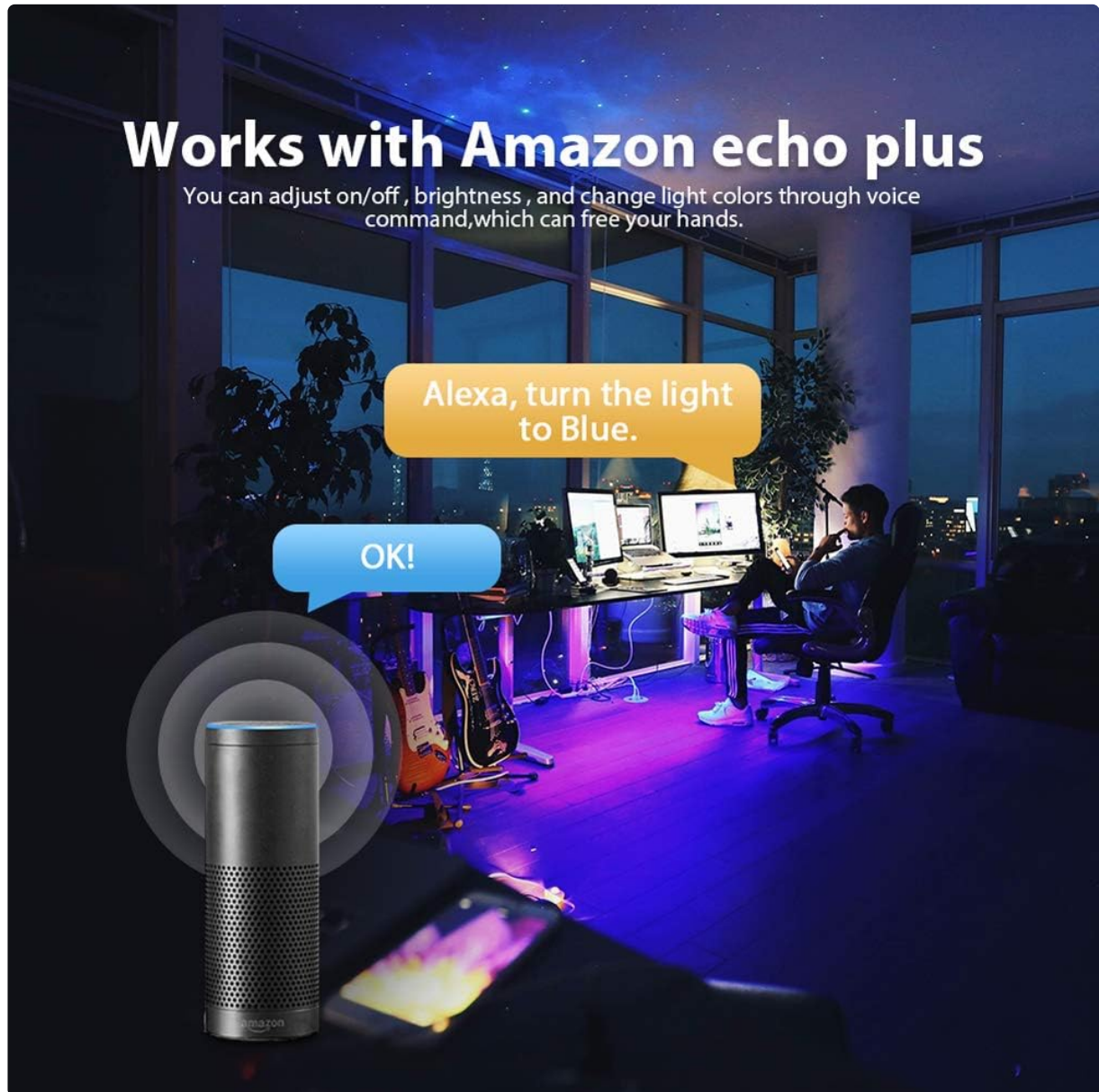
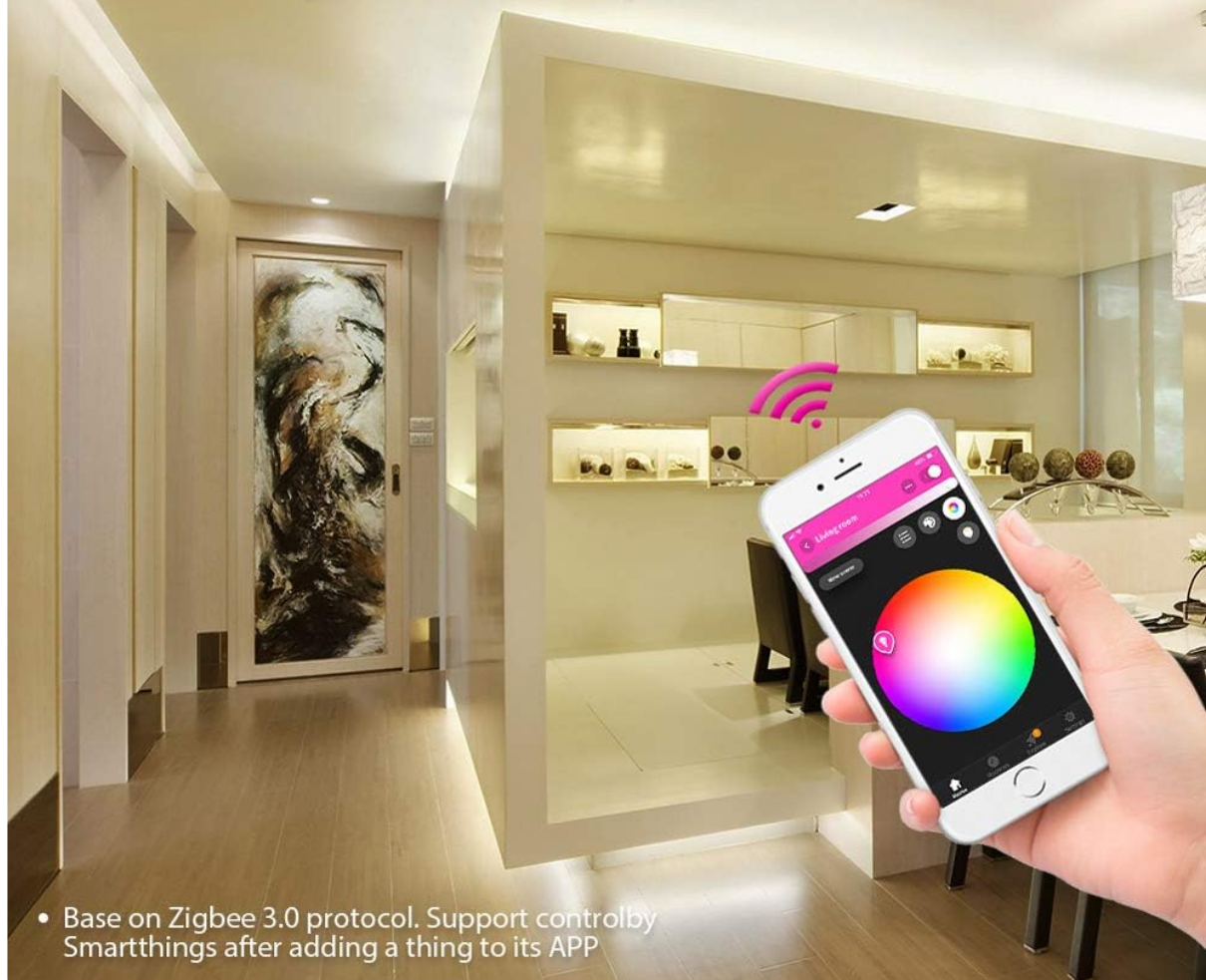


Image: A smartphone displaying an app interface for controlling LED lights, showing a color wheel and brightness slider, indicating smart app control.

Smart phone APP control

You can control the lights of all the rooms by mobile phone APP, which will make your life more convenient.



- Base on Zigbee 3.0 protocol. Support control by Smarthings after adding a thing to its APP

Image: A desk setup with a monitor and laptop, illuminated by a GLEDOPTO LED strip light displaying vibrant purple and blue colors, illustrating the 16 million color options.

Application Scenarios

The GLEDOPTO LED strip light is suitable for various ambient lighting applications, including:

- TV or monitor backlighting
- Under-cabinet lighting in kitchens
- Bedroom accent lighting
- Decorative lighting for parties and events

16 million colors changing

16 million colors for you to choose and make
your life colorful.



Image: A collage of various scenes demonstrating the GLEDOPTO LED strip light in different settings, such as behind a TV, under a desk, and in a bedroom, showcasing its versatility.

MAINTENANCE

To ensure the longevity and optimal performance of your GLEDOPTO LED Strip Light, follow these maintenance guidelines:

- **Cleaning:** Gently wipe the LED strip with a dry, soft cloth to remove dust. Avoid using harsh chemicals or abrasive cleaners. For the mini controller, ensure it remains dry and clean.
- **Storage:** If storing the LED strip light for an extended period, ensure it is clean, dry, and coiled loosely to prevent damage to the strip or adhesive. Store in a cool, dry place away from direct sunlight.
- **Avoid Excessive Bending:** While the strip is flexible, avoid sharp bends or creases that could damage the internal circuitry.

TROUBLESHOOTING

If you encounter issues with your GLEDOPTO LED Strip Light, refer to the following troubleshooting steps:

- **Light Not Turning On:**

- Check if the USB power source is active and providing 5V.
- Ensure all connections between the LED strip, controller, and USB power are secure.
- Verify that the Zigbee hub is powered on and functioning correctly.

- **Cannot Pair with Zigbee Hub:**

- Confirm your Zigbee hub is in pairing mode.
- Ensure the controller is powered by a stable 5V USB source.
- Move the LED strip closer to the Zigbee hub during the pairing process.
- If issues persist, try resetting the GLEDOPTO controller (refer to specific reset instructions for your controller model if available, typically involves power cycling or a button press).

- **Incorrect Colors or Brightness:**

- Check the settings in your smartphone app or voice assistant.
- Ensure the device is properly recognized by your Zigbee hub as an RGB CCT device.

- **Controller Not Responding:**

- Power cycle the controller by unplugging and re-plugging the USB power.
- Verify the Zigbee network is stable and the hub is online.

SPECIFICATIONS

Model	GL-C-001
Input Voltage	USB DC 5V
LED Type	SMD 5050 + SMD 2835
LED Strip Length	2 meters (6.56 feet)
LEDs per Meter	90
LED Color	RGB + Warm White + Cool White (RGB CCT)
Waterproof Rating (Strip)	IP65
Waterproof Rating (Controller)	Not waterproof
Connectivity Protocol	Zigbee
Control Method	App, Voice
Wattage	10 watts
Material	Metal, Resin, Vinyl
UPC	761270861110

WARRANTY AND SUPPORT

GLEDOPTO products come with a commitment to quality and customer satisfaction:

- **Money-Back Guarantee:** Enjoy a 30-day money-back guarantee for any reason.

- **Warranty:** A 12-month warranty is provided for quality-related issues.
- **Customer Support:** If you have any questions about the product, setup, operation, or other concerns, please contact our service team for assistance.