

## PlayStation 3005837

# PlayStation DualSense Charging Station Instruction Manual

Model: 3005837

## INTRODUCTION

This manual provides essential instructions for the safe and efficient use of your PlayStation DualSense Charging Station. Please read this manual thoroughly before use and retain it for future reference. The DualSense Charging Station allows you to charge up to two DualSense wireless controllers simultaneously, freeing up USB ports on your PlayStation 5 console.

## WHAT'S IN THE BOX

- 1 x DualSense Charging Station
- 1 x AC Power Adapter
- 2 x Charging slots (controllers not included)

## SETUP

### 1. Connecting the Power Adapter

Connect the supplied AC power adapter to the charging station and then plug it into a wall outlet. Ensure the connection is secure. The charging station uses its own dedicated power adapter, so it does not require a USB port from your PS5 console.

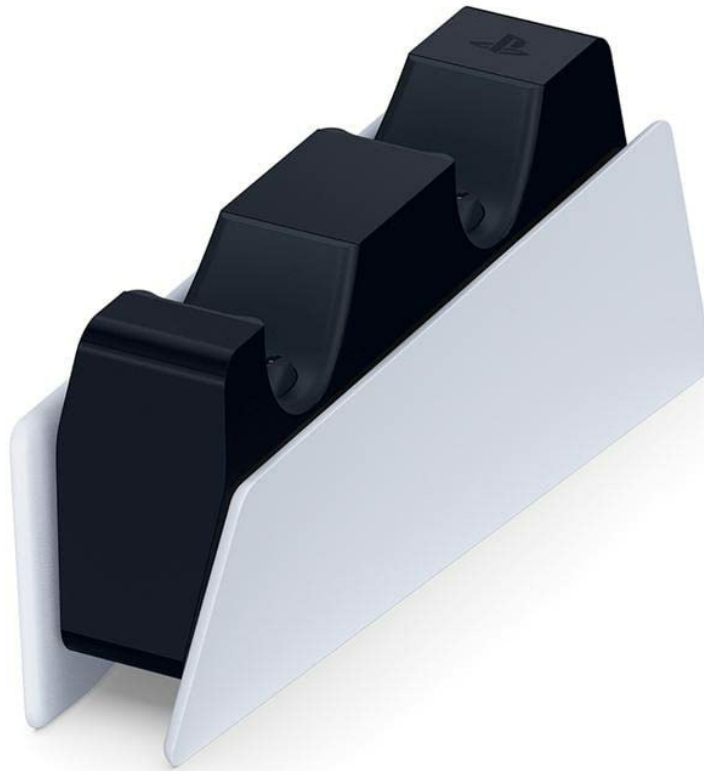


Image: The DualSense Charging Station with its power cable connected, ready for use.

## 2. Placing the Charging Station

Place the charging station on a flat, stable surface. Its compact design allows for flexible placement, keeping your gaming area organized.



Image: The DualSense Charging Station positioned on a flat surface, showcasing its sleek design.

## OPERATING INSTRUCTIONS

---

### 1. Charging DualSense Wireless Controllers

1. Align the charging port on the bottom of your DualSense wireless controller with the connector on the charging station.
2. Gently slide the controller onto the charging station until it clicks into place.
3. The light bar on the controller will pulse orange to indicate that it is charging.
4. Once fully charged, the light bar will turn off.
5. You can charge up to two controllers simultaneously.



Image: Two DualSense wireless controllers docked and charging on the station, illustrating the click-in design.

## 2. Charging Speed

Your controllers charge as quickly on the DualSense Charging Station as when connected directly to your PS5 console. This allows you to maintain optimal performance without occupying console USB ports.

## 3. Indicator Lights

The light bar on the DualSense controller indicates its charging status:

- **Pulsing Orange:** Controller is charging.
- **Off:** Controller is fully charged.

Your browser does not support the video tag.

Video: A demonstration of how to dock a DualSense controller onto the charging station and observe the orange charging indicator light.

Your browser does not support the video tag.

Video: This video illustrates the compact size of the charging station and how easily controllers can be placed for charging, highlighting its space-saving design.

## MAINTENANCE

- Keep the charging station and controllers clean and free of dust. Use a soft, dry cloth for cleaning.
- Avoid exposing the device to extreme temperatures, humidity, or direct sunlight.
- Do not attempt to disassemble or modify the charging station.

## TROUBLESHOOTING

### Controller Not Charging:

- Ensure the AC power adapter is securely connected to both the charging station and a working wall

outlet.

- Verify that the controller is properly seated in the charging slot and has clicked into place.
- Check the controller's light bar for the pulsing orange indicator. If no light appears, try re-seating the controller.
- Test with a different DualSense controller if available to rule out a controller issue.

### Slow Charging:

- Ensure you are using the original AC power adapter supplied with the charging station. Third-party adapters may not provide sufficient power.
- Avoid charging in excessively hot environments, as this can affect charging efficiency.

## SPECIFICATIONS

Model Number	3005837
Manufacturer	Sony
Product Dimensions	11.81 x 3.94 x 7.87 inches
Item Weight	12.7 ounces
Charging Capacity	2 DualSense Wireless Controllers
Power Source	AC Adapter (dedicated)

## WARRANTY AND SUPPORT

For warranty information and customer support, please refer to the documentation included with your PlayStation DualSense Charging Station or visit the official PlayStation support website.