

## Tiny Love TO1120700

# Tiny Love Wonder Buddies Thomas Interactive Toy Instruction Manual

Model: TO1120700

---

## INTRODUCTION

The Tiny Love Wonder Buddies Thomas is an interactive toy designed to engage and stimulate toddlers aged 12 months and older. This toy features smart sensors that enable various interactive play patterns, promoting developmental wonders such as emotional intelligence, fine motor skills, imagination, creativity, gross motor skills, cognition, language, communication, and sensory development.

This manual provides essential information for the safe and effective use of your Wonder Buddy Thomas, including setup, operation, maintenance, and troubleshooting.

---

## WHAT'S INCLUDED

- 1 x Tiny Love Wonder Buddy Thomas (Rabbit)
- 1 x Interactive Carrot Accessory
- 7 x Developmental Play Cards (not physically included, but referenced for play ideas)



Image: Tiny Love Wonder Buddy Thomas with its interactive carrot accessory.

## SAFETY INFORMATION

---

- Always supervise children during play.
- Inspect the toy regularly for any damage or loose parts. Discontinue use if damaged.
- Keep batteries out of reach of children.
- Do not immerse the toy in water. Clean with a damp cloth only.
- This toy is intended for children aged 12 months and up.

## SETUP

---

### Battery Installation

1. Locate the battery compartment on the underside of the Wonder Buddy Thomas.
2. Using a small screwdriver, open the battery compartment cover.
3. Insert 2 x AA batteries, ensuring correct polarity (+/-).
4. Replace the battery compartment cover and secure it with the screw.

*Note: Batteries are not included and must be purchased separately.*

## OPERATING INSTRUCTIONS

The Wonder Buddy Thomas features 7 interactive activities designed to engage your child. Each activity triggers unique sounds and responses.

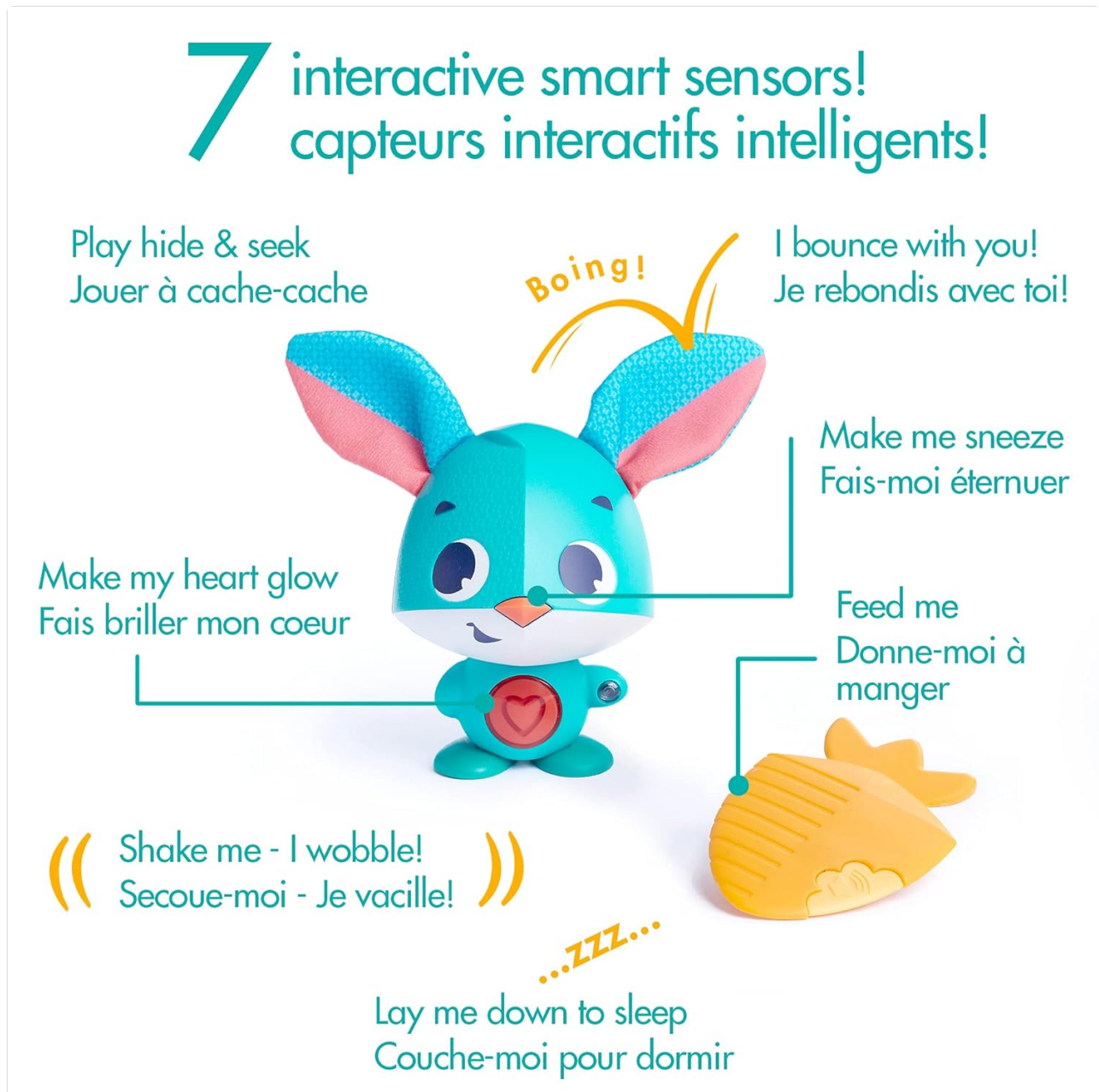


Image: Overview of the 7 interactive smart sensors and their corresponding actions.

### Interactive Activities:

- **Play Hide & Seek:** Cover Thomas with a cloth or hide him in a box. He will make sounds indicating he is hidden, and when uncovered, he will respond with cheerful sounds. This encourages object permanence and cause-and-effect understanding.



Image: A child discovers Thomas hidden in a box, playing peek-a-boo.

- **Bounce & Wobble:** Gently bounce or shake Thomas to hear him make playful 'boing' and wobbling sounds. This promotes gross motor skills and understanding of motion.



Image: A child holds Thomas and bounces it, triggering a 'boing' sound.

- **Tickle My Heart:** Press the heart button on Thomas's chest to make it glow and hear a happy sound. This encourages fine motor skills and sensory exploration.





**Tickle me**  
and make my  
heart glow

**Chatouille-moi**  
et fais briller  
mon coeur

Image: A child presses the heart button on Thomas, making it glow.

- **Feed Me:** Bring the interactive carrot accessory to Thomas's mouth to hear him make nibbling sounds. This encourages imaginative play and role-playing.



Image: A child holds the carrot to Thomas's mouth, activating nibbling sounds.

- **Touch My Nose:** Gently touch Thomas's nose to hear him sneeze. This simple interaction teaches cause and effect.



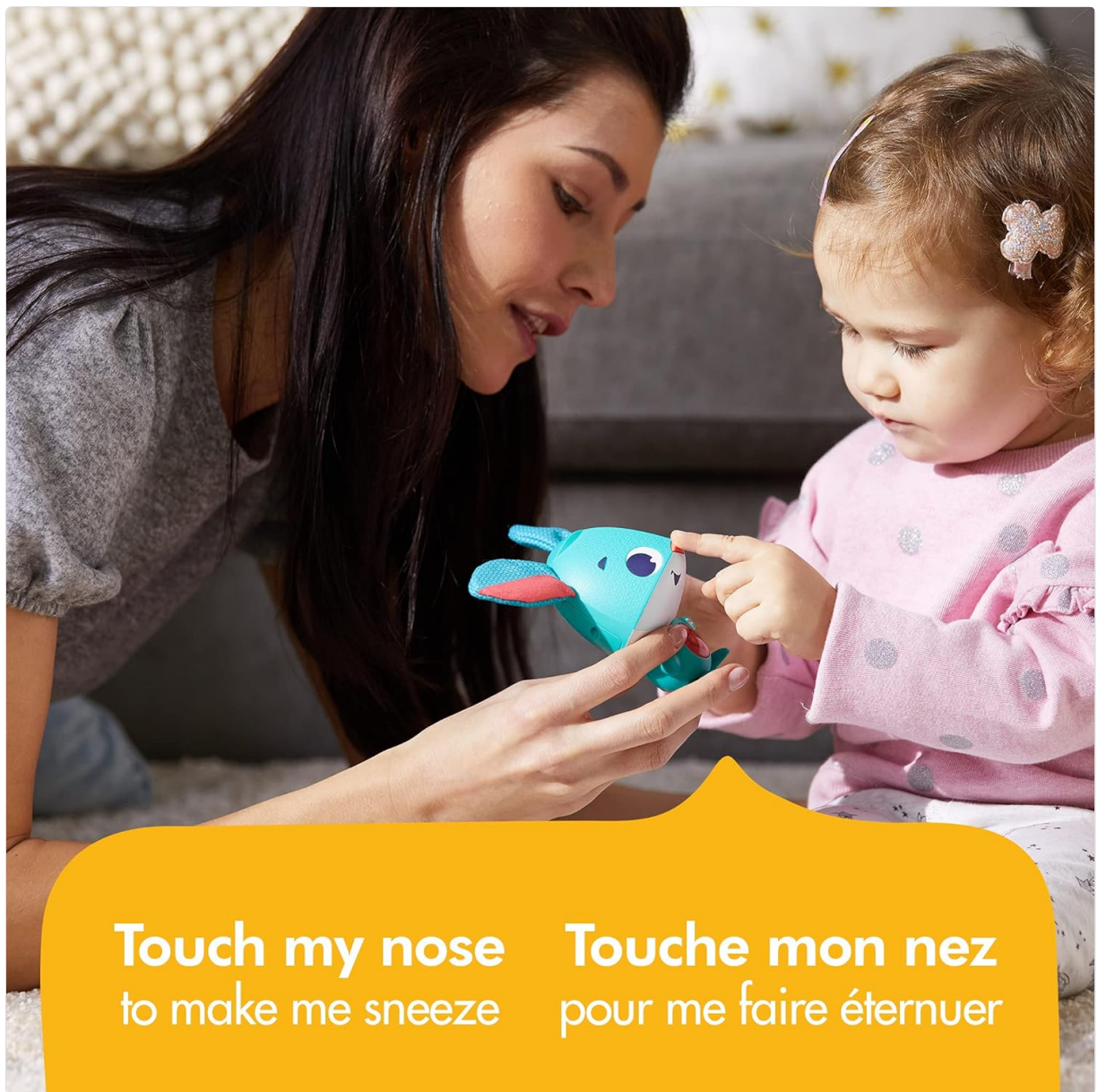


Image: A child touches Thomas's nose, triggering a sneeze sound.

- **Shake Me:** Shake Thomas to hear him wobble and make sounds. This encourages active play and sensory feedback.





**Shake me**  
and hear me wobble

**Secoue-moi**  
et entends-moi vaciller

Image: A child shakes Thomas, causing it to wobble and make sounds.

- **Put Me to Bed:** Lay Thomas down on his back to hear him snore. This activity encourages nurturing play and understanding of routines.



Image: A child places Thomas in a toy bed, triggering snoring sounds.

## Official Product Video

Video: This video demonstrates the various interactive features and benefits of the Tiny Love Wonder Buddies, including Thomas, Coco, and Leonardo. It showcases how children can engage with the toys through actions like peek-a-boo, tickling, feeding, and more, highlighting their developmental advantages.

## MAINTENANCE

### Cleaning Instructions

- To clean the Wonder Buddy Thomas, wipe the surface with a soft, damp cloth.
- Do not use harsh chemicals or abrasive cleaners.
- Do not submerge the toy in water, as this may damage the electronic components.
- Allow the toy to air dry completely before storing or allowing a child to play with it.

## TROUBLESHOOTING

Problem	Possible Cause	Solution
---------	----------------	----------

Problem	Possible Cause	Solution
Toy is not responding or making sounds.	Low or dead batteries. Incorrect battery installation.	Replace with fresh AA batteries, ensuring correct polarity. Check that the battery compartment is securely closed.
Sounds are distorted or too quiet.	Low battery power.	Replace batteries.
Specific interactive feature not working.	Sensor obstruction or malfunction.	Ensure the sensor area is clean and unobstructed. Try resetting the toy by removing and reinserting batteries. If the issue persists, contact customer support.

## SPECIFICATIONS


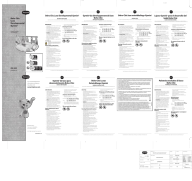
- **Model Number:** TO1120700
- **Product Dimensions:** 7.11 x 5.85 x 3.74 inches
- **Item Weight:** 9.2 ounces
- **Material Type:** Plastic
- **Batteries Required:** 2 AA batteries (not included)
- **Target Gender:** Unisex
- **Recommended Age:** 12 months +

## WARRANTY AND SUPPORT





Tiny Love products are manufactured to high-quality standards. For warranty information, product support, or to inquire about replacement parts, please visit the official Tiny Love website or contact their customer service department directly. Please retain your proof of purchase for any warranty claims.

For further assistance, you may visit the [Tiny Love Store on Amazon](#).

## Related Documents - TO1120700

	<p><a href="#">Tiny Love Classic Mobile - Instruction Manual</a></p> <p>Comprehensive instruction manual for the Tiny Love Classic Mobile, including assembly, usage, safety warnings, and maintenance tips. Suitable for babies 0-24 months.</p>
	<p><a href="#">Tiny Love Boho Chic Luxe Developmental Gymini - Instruction Guide</a></p> <p>Comprehensive instruction manual for the Tiny Love Boho Chic Luxe Developmental Gymini, covering assembly, battery safety, cleaning, storage, and usage guidelines. Features multiple languages.</p>



	<p><a href="#"><u>Tiny Love Gymini Deluxe &amp; Tiny Princess Tales Gymini Deluxe Instruction Guide</u></a></p> <p>Comprehensive instruction guide for the Tiny Love Gymini Deluxe and Tiny Princess Tales Gymini Deluxe baby play mat. Covers assembly, safety, battery care, cleaning, storage, and electronic feature operation. Includes model numbers and manufacturer details.</p>
	<p><a href="#"><u>Tiny Love Magical Tales Take-Along Mobile Instruction Guide</u></a></p> <p>Instruction guide for the Tiny Love Magical Tales Take-Along Mobile, detailing assembly, operation, safety warnings, and care instructions. Includes model numbers 130590E001 and TO 075.</p>
	<p><a href="#"><u>Tiny Love Magical Tales Black &amp; White Gymini® Instruction Guide</u></a></p> <p>Instruction guide for the Tiny Love Magical Tales Black &amp; White Gymini® play mat, including assembly, safety, battery, and cleaning instructions. Model 120590E001.</p>
	<p><a href="#"><u>Tiny Love Luxe Musical Mobile - Instruction Guide</u></a></p> <p>Instruction guide for the Tiny Love Luxe Musical Mobile (Model 130710E001), detailing safety warnings, usage instructions, battery requirements, product features, and care instructions.</p>