

Thermaltake W7

Thermaltake Pacific W7 Plus CPU Water Block Instruction Manual

Model: W7 Plus (CL-W279-CU00SW-A)

INTRODUCTION

The Thermaltake Pacific W7 Plus is a high-performance CPU water block designed for custom liquid cooling systems. It features a copper base with 0.15mm internal fin construction for efficient heat transfer, anti-corrosive nickel plating for durability, and a built-in temperature sensor for real-time monitoring. The integrated 16.8 million color RGB illumination is software-enabled via TT RGB Plus, offering extensive customization options.

KEY FEATURES

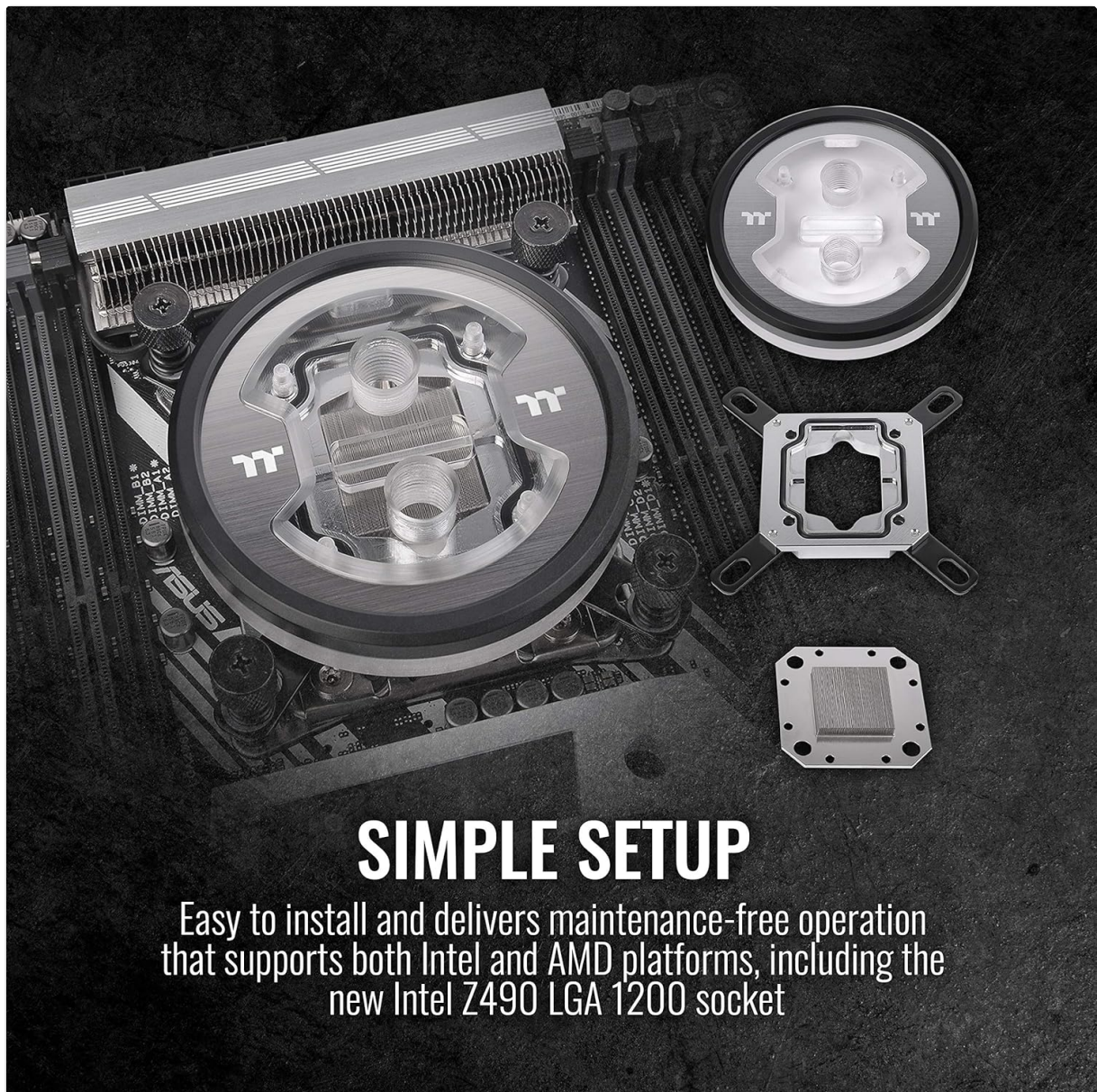
- **Transparent Water Block:** Features a unique upper cover and 12 customizable RGB LEDs to showcase coolant and lighting effects.
- **Built-in Temperature Sensor:** Monitors real-time water temperature, with readings transmitted to TT RGB Plus Software for display and LED customization.
- **Premium Copper Base:** Specially machined and nickel-plated for exceptional heat transfer and anti-corrosion protection.
- **RGB PLUS Ecosystem:** The digital controller provides four additional ports for syncing with other TT RGB PLUS compatible products.
- **Universal Compatibility:** Supports Intel LGA 1200, 2066, 2011v3, 2011, 115X, 1366, 775 and AMD AM4, AM3+, AM3, AM2+, AM2, FM2, FM1 sockets. An LGA1700 kit (P/N CL-O031-ST00BL-A) is available separately for upgrade.

PACKAGE CONTENTS

The Thermaltake Pacific W7 Plus CPU Water Block package includes:

- Thermaltake W7 Water Block
- Mounting hardware for various Intel and AMD sockets (brackets, screws, spacers, springs)

- Thermal compound (syringe)
- Q-tips for thermal compound application
- Adhesive materials for mounting



SIMPLE SETUP

Easy to install and delivers maintenance-free operation that supports both Intel and AMD platforms, including the new Intel Z490 LGA 1200 socket

Image: Included mounting hardware for the Pacific W7 Plus water block.

SETUP AND INSTALLATION

Proper installation is crucial for optimal performance and system stability. Follow these general steps for installing your Thermaltake Pacific W7 Plus CPU Water Block. Refer to your motherboard and CPU manuals for specific socket preparation.

1. Prepare the CPU and Motherboard

1. Ensure your CPU is securely seated in its socket on the motherboard.
2. Clean the CPU's integrated heat spreader (IHS) surface thoroughly with isopropyl alcohol to remove any dust or residue.
3. Apply a small amount of thermal compound (included) to the center of the CPU's IHS. Spread it evenly into a thin layer using a Q-tip or spreader.

2. Install Mounting Hardware

1. Identify the correct mounting brackets and screws for your CPU socket (Intel or AMD) from the included hardware kit.
2. Attach the appropriate backplate to the rear of your motherboard, aligning it with the CPU socket holes.
3. Secure the standoffs through the motherboard from the front, threading them into the backplate.



THERMALTAKE PACIFIC W7 PLUS

A copper base CPU water block with 0.15mm internal fin construction, anti-corrosive nickel plating and a built-in temperature sensor for monitoring temperature

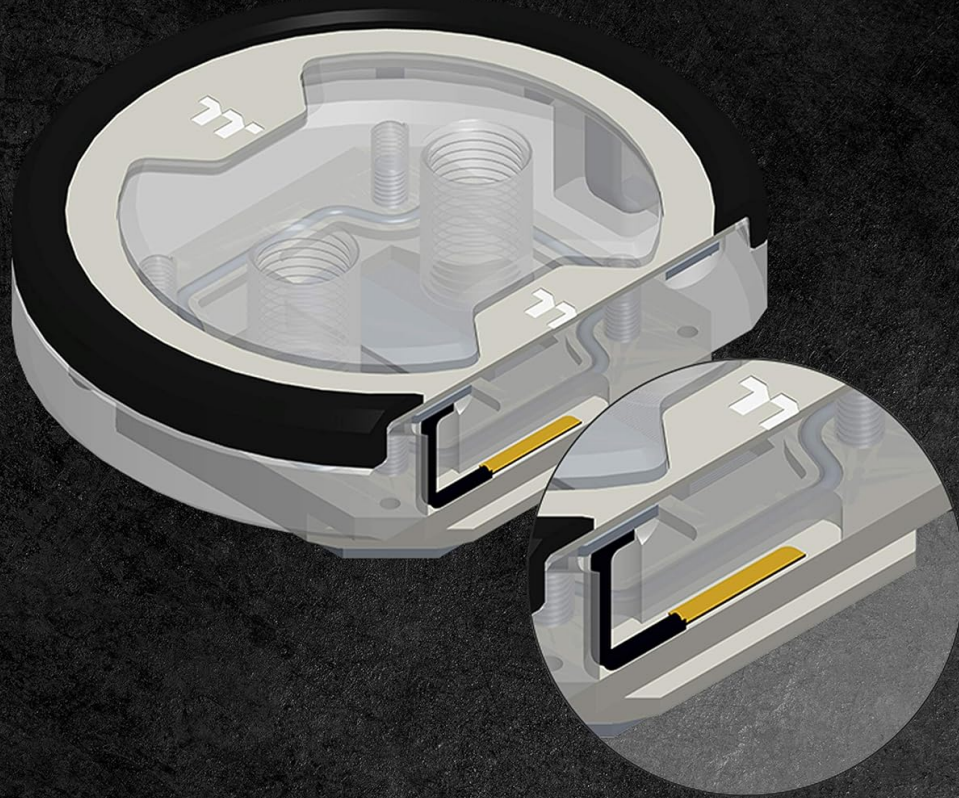
Image: The Thermaltake Pacific W7 Plus CPU Water Block with its integrated RGB lighting.

3. Mount the Water Block

1. Carefully remove the protective film from the copper base of the water block.
2. Position the water block onto the CPU, ensuring the mounting holes align with the standoffs.
3. Place the spring-loaded thumb screws onto the standoffs and tighten them in a diagonal pattern until snug. Do not overtighten.
4. Connect the 4-pin Molex power connector from the water block to your power supply.
5. Connect the RGB cable from the water block to the included digital controller.



Image: Close-up of the transparent water block design, highlighting the internal coolant channels and addressable LEDs.



BUILT-IN TEMPERATURE SENSOR

The sensor measures the coolant temperature as it flows through the block and transmits the readings to TT RGB Plus Software

Image: Diagram illustrating the integrated temperature sensor within the water block, which measures coolant temperature.



ANTI-CORROSION COPPER BASE

An absolute mirror finish with anti-corrosive nickel plating, providing exceptional heat transfer and anti-corrosion protection

Image: View of the anti-corrosion nickel-plated copper base, designed for optimal heat transfer.

OPERATING INSTRUCTIONS

TT RGB Plus Software

The Thermaltake Pacific W7 Plus water block is controlled via the TT RGB Plus Software. This software allows you to:

- Customize the 16.8 million color RGB illumination.
- Monitor the real-time water temperature detected by the built-in sensor.
- Synchronize lighting effects with other TT RGB PLUS compatible products connected to the digital controller.

Download the latest version of the TT RGB Plus Software from the official Thermaltake website. Install and launch the software to access control and monitoring features.

MAINTENANCE

Regular maintenance helps ensure the longevity and optimal performance of your liquid cooling system.

- **Coolant Check:** Periodically inspect your coolant for discoloration or particulate matter. Replace coolant every 6-12 months, or as recommended by the coolant manufacturer.
- **System Flush:** When replacing coolant, it is recommended to flush the entire loop to remove any accumulated debris or old coolant residue.
- **Block Inspection:** Every 1-2 years, or if performance degrades, disassemble the water block to inspect the micro-fins for buildup. Clean gently with a soft brush and distilled water if necessary.
- **Leak Check:** After any maintenance involving opening the loop, perform a thorough leak test before powering on your system.

TROUBLESHOOTING

- **No RGB Lighting:**
 - Ensure the 4-pin Molex power connector is securely connected to the power supply.
 - Verify the RGB cable is correctly connected to the digital controller.
 - Check the TT RGB Plus Software for proper device detection and lighting settings.
- **High CPU Temperatures:**
 - Confirm the water block is securely mounted and making good contact with the CPU. Re-apply thermal paste if necessary.
 - Ensure the pump in your liquid cooling loop is functioning correctly and coolant is flowing.
 - Check for air bubbles trapped in the water block or radiator. Tilt your system gently to help dislodge them.
 - Verify that your radiator fans are operating at appropriate speeds.
- **Leaks:**
 - Immediately power off your system if a leak is detected.
 - Inspect all fittings and connections for tightness.
 - Ensure O-rings are properly seated and not damaged.

SPECIFICATIONS

Model Number	CL-W279-CU00SW-A
Dimensions (L x W x H)	93.4 L x 93.4 W x 22 H mm (3.68" x 3.68" x 0.87")
Weight	670 g (1.48 lbs)
Material	Copper Base, Nickel Plating
Compatibility (Intel)	LGA 2066/20113/2011/1366/1200/1156/1155/1151/1150/775
Compatibility (AMD)	AM4/FM2/FM1/AM3+/AM3/AM2+/AM2
Power Input	2.4 W
Rated Voltage	5 V
Connector	4-Pin Molex
Threads	G 1/4"

WARRANTY AND SUPPORT

The Thermaltake Pacific W7 Plus CPU Water Block comes with a **2-year manufacturer's warranty**. For technical support, warranty claims, or further assistance, please visit the official Thermaltake website or contact their customer service department. Keep your proof of purchase for warranty validation. For returns or replacements, please refer to the retailer's return policy, which typically allows for returns within 30 days of purchase.