

YIHUA 939-II

YIHUA 939-II Pyrography Station Wood Burning Kit

Instruction Manual

Model: 939-II | Brand: YIHUA

1. IMPORTANT SAFETY INFORMATION

Please read and understand all safety instructions before operating the YIHUA 939-II Pyrography Station. Failure to follow these instructions may result in electric shock, fire, or serious injury.

- **Ventilation:** Always operate the pyrography station in a well-ventilated area to avoid inhaling smoke and fumes produced during wood burning.
- **Hot Surfaces:** The pyrography pen and nibs become extremely hot during operation. Avoid direct contact with skin. Use the stable pen holder provided.
- **Flammable Materials:** Keep flammable materials away from the working area. Ensure your workspace is clean and free of debris.
- **Unplug When Not in Use:** Always unplug the unit from the power outlet when not in use, before changing nibs, or before cleaning.
- **Children and Pets:** Keep the pyrography station and all accessories out of reach of children and pets.
- **Power Supply:** This model is designed to operate on 110-127V 60Hz with a US-standard power plug. Do not use with incompatible power sources.

2. PACKAGE CONTENTS

Verify that all items listed below are included in your package:

- YIHUA 939-II Pyrography Station Unit
- Pyrography Pen
- 20 Wire Nibs (various types including Skew, Wire, Shader)
- Stable Pen Holder
- 2 Stencils

- 2 Scrap Wood pieces for practice
- Stainless Steel Tweezers
- Pliers



Image 2.1: Overview of the YIHUA 939-II Pyrography Station and its complete set of accessories.

3. SETUP INSTRUCTIONS

3.1 Connecting the Pyrography Pen

1. Locate the pen's connector cable.
2. Roll back the protective sleeve on the connector.
3. Align the connector with the port on the main unit and push it in firmly.
4. Tighten the fastener to secure the connection.

Correct Installation Prevents Heating Issue

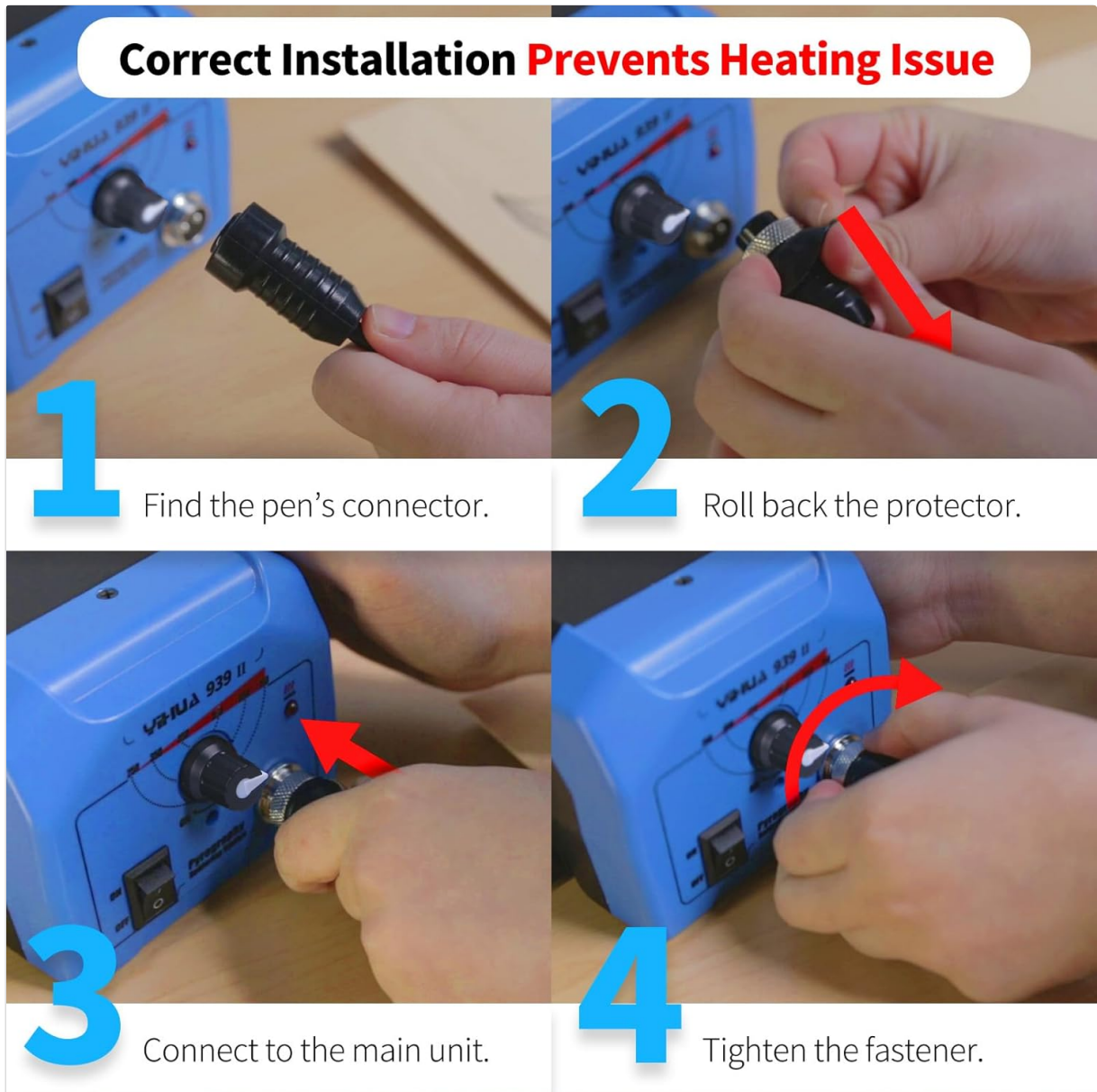


Image 3.1: Visual guide for connecting the pyrography pen to the YIHUA 939-II station.

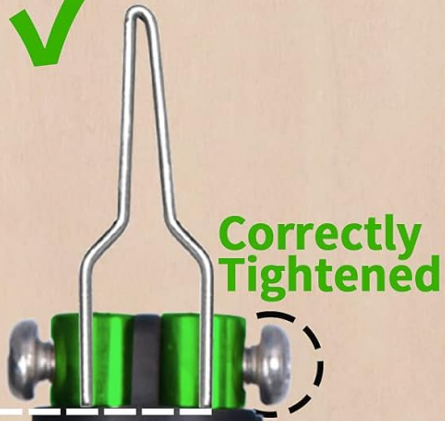
3.2 Installing Nibs

Ensure the unit is unplugged and the pen is cool before installing or changing nibs.

1. Select the desired nib from the provided assortment.
2. Carefully insert the nib into the pen's tip receptacle. Ensure the nib is inserted 100% and is correctly tightened.
3. **Important:** Verify that the two wires of the nib are not in contact with each other. A small gap is necessary for proper heating. If the wires are touching, gently adjust them with pliers when the nib is cool.

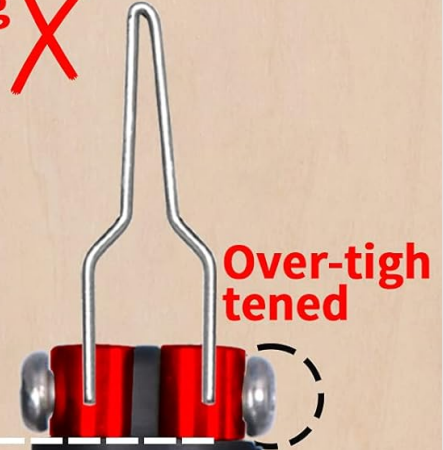
NOTE: Install the pyrography tip CORRECTLY to get consistent performance, and INCORRECT tip installation may result in no heat, inconsistent colors, and other negative impacts.

Correct ✓



**Pyrography Tip
Inserted 100%**

Wrong ✗



**Pyrography Tip
Incorrectly Inserted**

**Correct Installation:
Consistent Color**

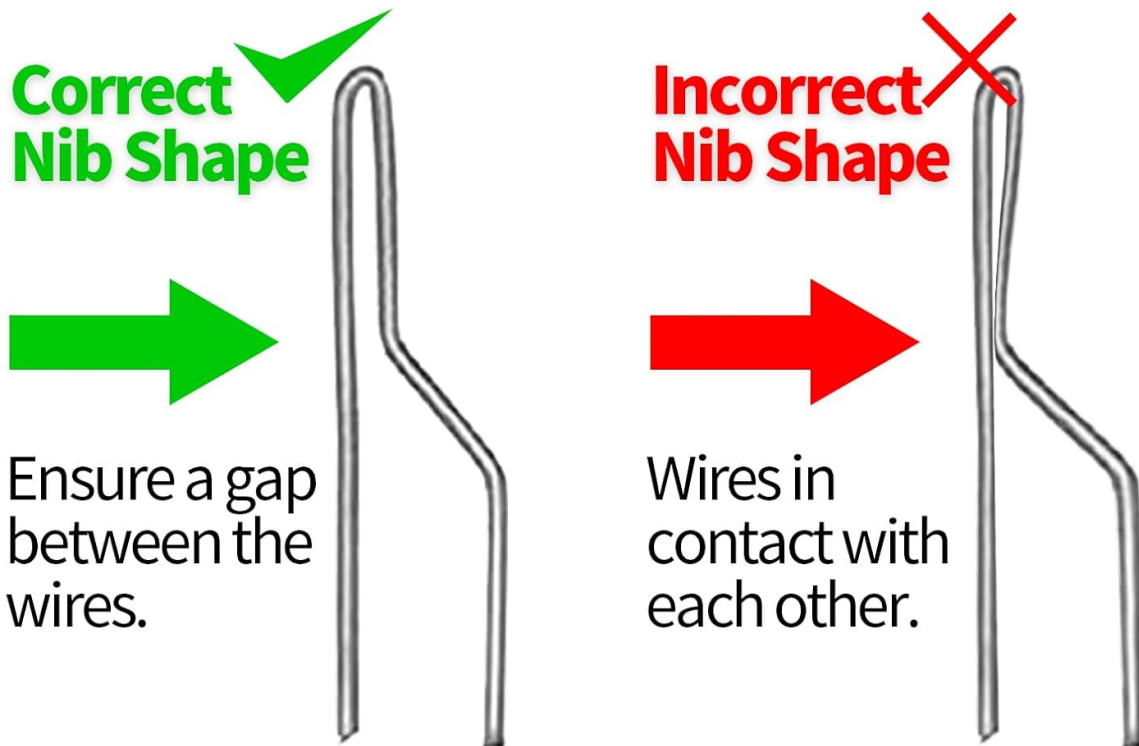


**Incorrect Installation: No
heat, inconsistent heating**



Image 3.2: Illustration of correct and incorrect pyrography tip installation, highlighting the importance of proper tightening and alignment for consistent heating.

Correct Installation Prevents Heating Issue



NOTE: DO NOT apply excessive force while using, bending the nib may cause heating issues. (due to the contact between wires)

If the nib is bent, allow the pyrography pen to cool completely before correcting the bend with a plier tool.

Image 3.3: Demonstrates the correct nib shape with a gap between wires versus an incorrect shape where wires are in contact, which can prevent proper heating.

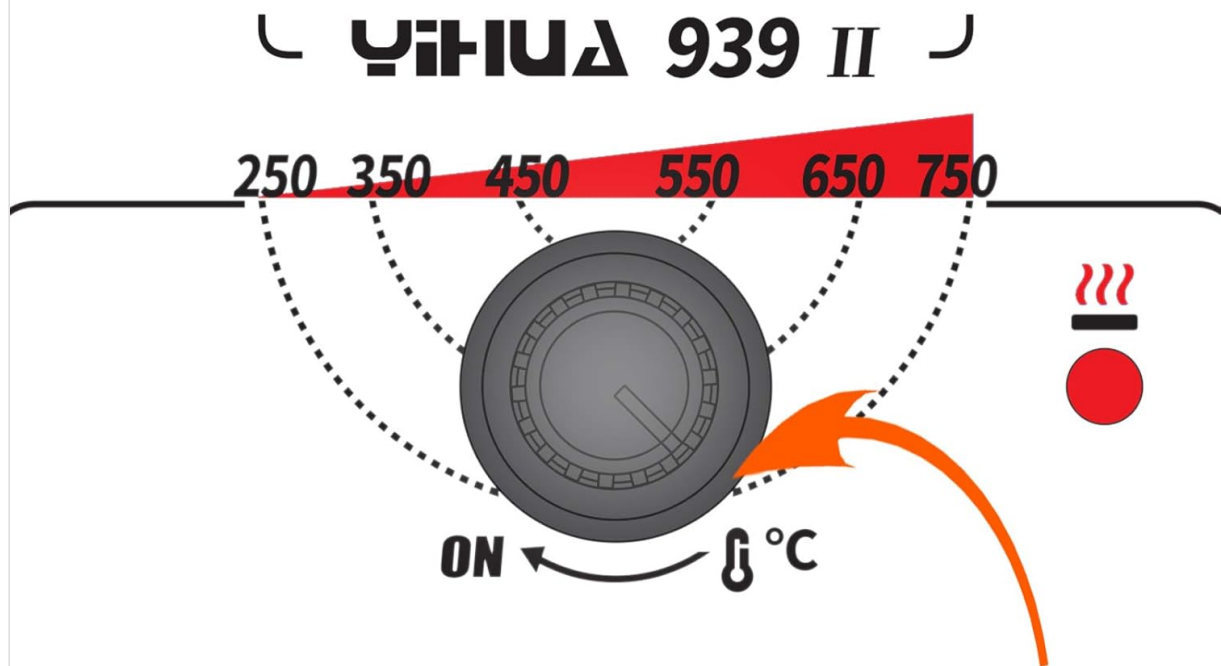
4. OPERATING INSTRUCTIONS

4.1 Powering On and Temperature Adjustment

1. Place the pyrography pen securely in the stable pen holder.
2. Plug the power cord into a compatible 110-127V 60Hz outlet.
3. Turn the power switch to the 'ON' position.
4. Turn the temperature control knob to the MAXIMUM setting and allow the station to heat up for approximately 1 minute.
5. Gradually decrease the temperature as you test the color of the burn on a practice wood or scrap wood piece to find the desired shade. The adjustable temperature range is 482~1382°F (250~750°C).

TEMPERATURE RECOMMENDATIONS

(Figures for reference only, please adjust the temperature in accordance to the materials at work)



When ready to draw, **turn the station temperature to MAXIMUM** and allow the station to heat up for approximately 1-minute. Then, gradually decrease the temperature as you test the color of the burn on a practice-wood / scrap-wood piece to find the color you're most comfortable with.

Image 4.1: Guide to temperature recommendations and how to adjust the dial for optimal burning results.

4.2 Pyrography Techniques and Tips

- **Practice:** Use the included scrap wood to familiarize yourself with different nibs and temperature settings.
- **Consistent Burn:** If the burn becomes lighter as you draw, either increase the temperature slightly or lift the pen from the wood for a few seconds to allow it to reheat, then continue drawing.
- **Nibs:** Experiment with the 20 different nibs for various effects such as straight lines, curves, calligraphy, stippling, feathering, hair effects, outlining, and crosshatching.



If the burn gets lighter as you draw

- A** Turn the temperature to a higher setting to maintain the burn/shade color.
- B** Lift off the pen from the wood and allow the pen to heat up for a few seconds. Then, begin drawing again.

Image 4.2: Instructions on how to adjust temperature or pause to reheat the pen if the burn color becomes lighter during use.

Patience and Practice

Try different temperature settings and wire nibs on scrap wood.



Image 4.3: Encourages users to practice with different temperature settings and wire nibs on scrap wood to develop skill and familiarity.



Image 4.4: Displays the variety of 20 wire nibs included in the kit, suitable for different burning techniques and effects.

5. MAINTENANCE

- **Cleaning Nibs:** Allow nibs to cool completely before cleaning. Use a soft brush or fine-grit sandpaper to gently remove carbon buildup. Avoid harsh chemicals.
- **Storage:** Store the pyrography station and all accessories in a dry, safe place away from dust and moisture. Keep nibs organized in the provided collector tin.
- **Cable Care:** Do not bend or crimp the power cord or pen cable excessively. Inspect cables regularly for any signs of damage.

6. TROUBLESHOOTING

Refer to the table below for common issues and their solutions.

Issue	Possible Cause	Solution
Nib not heating up	<ul style="list-style-type: none"> • Nibs wires are touching. • Nib not fully inserted or tightened. • Faulty connection to the main unit. 	<ul style="list-style-type: none"> • Ensure a gap between nib wires (adjust with pliers when cool). • Re-insert and tighten the nib completely. • Check pen connection to the main unit and tighten fastener.
Inconsistent burn color	<ul style="list-style-type: none"> • Temperature setting too low. • Pen not allowed to reheat. • Incorrect nib installation. 	<ul style="list-style-type: none"> • Increase temperature setting. • Lift pen from wood periodically to allow reheating. • Verify nib is correctly installed and tightened (refer to Section 3.2).
Excessive smoke	<ul style="list-style-type: none"> • Temperature setting too high. • Burning material is too wet or contains impurities. 	<ul style="list-style-type: none"> • Reduce temperature setting. • Ensure wood is dry and suitable for pyrography.

7. SPECIFICATIONS

Feature	Specification
Model Number	YIHUA 939-II
Temperature Range	250~750°C / 482~1382°F
Voltage	110-127 Volts
Wattage	25 watts
Product Dimensions	5.67 x 4.92 x 3.54 inches
Item Weight	3.83 pounds
Display Type	LED

8. WARRANTY AND SUPPORT

The YIHUA 939-II Pyrography Station comes with a **12-month US-exclusive manufacturer technical coverage**. For any technical assistance or support, please contact YIHUA customer service. Professional assistance is available 24/7 on Amazon.

For further inquiries or to access support resources, please visit the official YIHUA store on Amazon or refer to the contact information provided with your purchase.

