

Yamaha Audio SR-C20A

Yamaha Audio SR-C20A Compact Sound Bar User Manual

Model: SR-C20A

1. INTRODUCTION

This manual provides essential instructions for the safe and efficient use of your Yamaha Audio SR-C20A Compact Sound Bar. Please read this manual thoroughly before using the product and retain it for future reference.

Product Overview

The Yamaha SR-C20A is a compact sound bar designed to enhance your audio experience with a built-in subwoofer and Bluetooth connectivity. It features Clear Voice technology for improved dialogue clarity and offers flexible placement options, including wall mounting.

Package Contents

Verify that all items listed below are included in your package:

- Yamaha SR-C20A Compact Sound Bar
- Remote Control
- Power Cord
- Optical Digital Audio Cable
- Wall Mounting Template
- Quick Start Guide
- Safety Brochure

2. SAFETY INFORMATION

Always follow basic safety precautions when using this product to reduce the risk of fire, electric shock, and injury.

- Do not expose this apparatus to rain or moisture.
- Do not block any ventilation openings. Install in accordance with the manufacturer's instructions.
- Do not install near any heat sources such as radiators, heat registers, stoves, or other apparatus (including amplifiers) that produce heat.
- Protect the power cord from being walked on or pinched, particularly at plugs, convenience receptacles, and the point where they exit from the apparatus.
- Only use attachments/accessories specified by the manufacturer.
- Refer all servicing to qualified service personnel.

3. SETUP

Placement

The SR-C20A sound bar can be placed on a TV stand or mounted on a wall. Ensure the sound bar is placed on a stable, level surface or securely mounted.

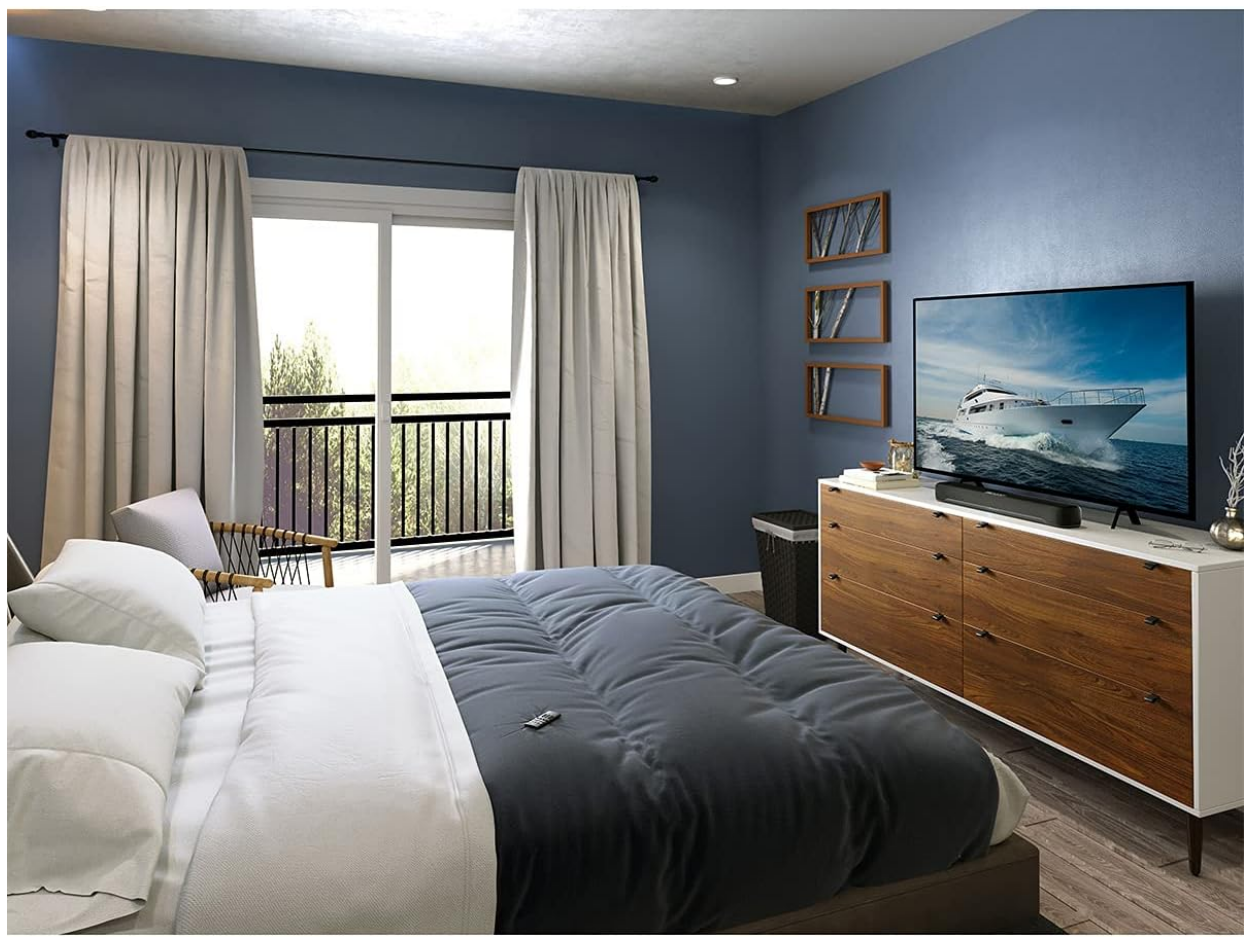


Image: The Yamaha SR-C20A sound bar positioned on a media console beneath a television in a modern bedroom. This illustrates a typical placement scenario for the device.

Connections

Connect the sound bar to your television and power source using the following steps:

1. **HDMI (ARC) Connection:** For optimal audio quality and control, connect an HDMI cable (not included) from the TV (ARC) port on the sound bar to the HDMI ARC port on your television. This allows your TV remote to control the sound bar's power and volume.
2. **Optical Digital Connection:** If your TV does not have an HDMI ARC port, use the included optical digital

audio cable to connect the OPTICAL port on the sound bar to the optical digital output on your television.

3. **Analog Connection:** For devices with analog audio output, connect a 3.5mm stereo mini-plug cable (not included) from the ANALOG port on the sound bar to the audio output of your device.
4. **Power Connection:** Connect the supplied power cord to the DC IN 20V port on the sound bar, then plug the other end into an AC wall outlet.



Image: A close-up view of the rear panel of the Yamaha SR-C20A sound bar, highlighting the various input ports including USB (for update only), Analog, Optical, TV (HDMI ARC), and DC IN 20V power input.

Wall Mounting

The SR-C20A can be wall-mounted using the built-in keyholes. Use the provided wall mounting template to mark the screw positions accurately. Ensure appropriate screws and wall anchors (not included) are used for your wall type to securely support the sound bar's weight.

4. OPERATING

Basic Controls

The sound bar can be operated using the touch controls on the top panel or the included remote control.





Image: The remote control for the Yamaha SR-C20A sound bar, featuring buttons for power, input selection (TV, Optical, Bluetooth, Analog), sound enhancements (Clear Voice, Bass Ext), sound modes (Stereo, Standard, Movie, Game), subwoofer level, volume, info, dim, and mute.

Input Selection

Press the 'Input' button on the sound bar or the corresponding input button (TV, OPTICAL, BLUETOOTH, ANALOG) on the remote control to switch between audio sources. The indicator lights on the front of the sound bar will show the currently selected input.

Sound Modes

The SR-C20A offers various sound modes to optimize your listening experience:

- **STEREO:** Standard stereo playback.
- **STANDARD:** General purpose sound mode.
- **MOVIE:** Optimized for cinematic content, enhancing dialogue and effects.
- **GAME:** Tailored for gaming audio, providing immersive sound.

Press the respective sound mode button on the remote control to select your desired mode.

Clear Voice and Bass Extension

- **Clear Voice:** Press the 'CLEAR VOICE' button on the remote to enhance dialogue clarity, making voices easier to hear in movies and TV shows.
- **Bass Extension:** Press the 'BASS EXT' button to boost low-frequency output for a more impactful bass response.

Bluetooth Pairing

To connect a Bluetooth device:

1. Press the 'BLUETOOTH' button on the remote or the input button on the sound bar until the Bluetooth indicator lights up.
2. On your mobile device, enable Bluetooth and search for available devices.
3. Select 'Yamaha SR-C20A' from the list of devices.
4. Once connected, the Bluetooth indicator will remain steadily lit.

5. MAINTENANCE

Cleaning

To maintain the appearance and performance of your sound bar:

- Wipe the exterior surfaces with a soft, dry cloth.
- Do not use liquid cleaners, aerosol cleaners, or solvents, as these may damage the finish.
- Ensure the sound bar is unplugged from the power outlet before cleaning.

Storage

If storing the sound bar for an extended period, unplug it from the power outlet and store it in a cool, dry place away from direct sunlight and extreme temperatures.

6. TROUBLESHOOTING

If you encounter issues with your SR-C20A sound bar, refer to the following common problems and solutions:

Problem	Possible Cause / Solution
No sound from the sound bar.	<ul style="list-style-type: none">• Ensure the sound bar is powered on.• Check that the correct input source is selected (TV, Optical, Bluetooth, Analog).• Verify all cables are securely connected.• Increase the volume on both the sound bar and your TV/device.• If using HDMI ARC, ensure ARC is enabled in your TV's audio settings.
Bluetooth device cannot connect.	<ul style="list-style-type: none">• Ensure the sound bar is in Bluetooth pairing mode.• Make sure the Bluetooth device is within range (approx. 10 meters).• Turn off and on Bluetooth on your device, then try pairing again.• Clear the sound bar from your device's Bluetooth list and re-pair.
Remote control not working.	<ul style="list-style-type: none">• Check the battery orientation and replace if necessary (1 Lithium Metal battery included).• Ensure there are no obstructions between the remote and the sound bar.• Point the remote directly at the sound bar's remote sensor.
Sound is distorted or unclear.	<ul style="list-style-type: none">• Reduce the volume level.• Check audio settings on your TV or connected device.• Try a different sound mode.• Ensure cables are not damaged or loose.

7. SPECIFICATIONS

Detailed technical specifications for the Yamaha SR-C20A Compact Sound Bar:



Image: An overhead view of the Yamaha SR-C20A sound bar with dimension labels indicating a depth of 6 inches, a width of 26 inches, and a height of 6 inches.

Feature	Detail
Model Name	SR-C20A
Speaker Type	Soundbar, Built-in Subwoofer
Connectivity Technology	Wired, Wireless (Bluetooth)
Wireless Communication Technology	Bluetooth
Bluetooth Range	10 Meters
Audio Output Mode	Stereo, Standard, Movie, Game
Speaker Maximum Output Power	100 Watts
Product Dimensions (D x W x H)	6"D x 26"W x 6"H
Item Weight	3.97 Pounds
Material	Plastic
Color	Black
Included Components	Remote
Power Source	Corded Electric
Control Method	Remote, Voice
Mounting Type	Wall Mount
UPC	027108959245

8. WARRANTY INFORMATION

The Yamaha SR-C20A Compact Sound Bar comes with a limited warranty. For specific details regarding warranty coverage, duration, and terms, please refer to the warranty card included with your product or visit the official Yamaha Audio website. Keep your proof of purchase for warranty claims.

9. SUPPORT

For further assistance, technical support, or inquiries about your Yamaha SR-C20A, please visit the official Yamaha Audio support website or contact their customer service department. Contact information can typically be found on the Yamaha Audio website or in the documentation provided with your product.

Online Support: www.yamaha.com/audio