

MAIDeSITe T1 Pro

MAIDeSITe T1 Pro Electric Height Adjustable Sit-Stand Desk Frame User Manual

Model: T1 Pro

INTRODUCTION

The MAIDeSITe T1 Pro Electric Height Adjustable Desk Frame is designed to provide a versatile and ergonomic workspace. This frame features an all-steel structure and a robust support system, ensuring stability and durability. Its powerful motor system allows for smooth and quiet height adjustments, promoting a healthier work environment by enabling seamless transitions between sitting and standing postures. This manual provides essential information for the proper assembly, operation, and maintenance of your MAIDeSITe T1 Pro desk frame. Please read it thoroughly before use to ensure safe and efficient operation.

MAIDESITE T1 Pro



Image: The MAIDESITE T1 Pro desk frame integrated into a modern workspace.

SAFETY WARNINGS

Important Safety Information:

- Do not exceed the total authorized weight capacity of 80 kg (176 lbs). Overloading can cause damage to the desk frame and potential injury.
- Ensure the desk frame is properly assembled according to the instructions to guarantee stability and safety during use.
- The desk frame is designed to be water-resistant, but it is not waterproof. Avoid exposing the electrical components or the frame to direct water or excessive moisture.
- Keep children and pets away from the desk during height adjustments to prevent accidents.
- Before adjusting the height, ensure there are no obstacles above or below the desk that could impede its

movement.

SETUP AND ASSEMBLY

The MAIDeSiTe T1 Pro desk frame is designed for straightforward assembly. It is recommended to have two people for certain steps, especially when positioning the desktop and flipping the assembled desk.

Package Contents:

- Desk Frame Components (legs, crossbar, feet)
- Control Box
- Control Panel with LED display
- Power Adapter and Cable
- Assembly Hardware (screws, bolts, Allen wrench)
- Instruction Manual

Assembly Steps:

1. **Unpack Components:** Carefully remove all parts from the packaging and verify against the parts list in the included manual.
2. **Assemble Legs and Feet:** Attach the feet to the bottom of each leg using the provided screws.
3. **Connect Crossbar:** Secure the crossbar between the two leg assemblies. Ensure all connections are tight.
4. **Install Motor and Control Box:** Mount the motor and control box to the designated positions on the frame using the appropriate hardware.
5. **Attach Control Panel:** Secure the control panel to the underside of the desktop (desktop sold separately) in an easily accessible location.
6. **Mount Desktop:** Carefully place your chosen desktop (recommended size: 120-140 cm long, 60-70 cm wide) onto the assembled frame. Align and secure it using screws.
7. **Connect Cables:** Connect all motor and control panel cables to the control box, and then connect the power adapter.
8. **Initial Calibration:** Follow the specific calibration instructions in the included manual for first-time use. This typically involves lowering the desk to its lowest point and holding the down button for a few seconds.

Easy to Assemble



Image: Detail of the desk frame assembly process, highlighting ease of installation.

OPERATING INSTRUCTIONS

The MAIDeSITe T1 Pro features an intuitive control panel for easy height adjustment and memory functions.

Control Panel Functions:

Premium Touch Panel

LCD screen. Smarter. Smooth



Image: The advanced touchscreen control panel with its various functions.

- **LCD Screen:** Displays the current desk height in centimeters.
- **Up/Down Arrows (▲ / ▼):** Press and hold to manually adjust the desk height up or down. Release to stop.
- **Memory Presets (1, 2, 3, 4):** These buttons allow you to save and recall up to four preferred desk heights.
- **Memory Set Button (M):** Used to program a desired height into a memory slot.
- **Child Safety Lock:** Activates or deactivates the control panel to prevent accidental adjustments.
- **USB Port:** Provides a convenient charging point for mobile devices.

Setting Memory Presets:

1. Adjust the desk to your desired height using the Up/Down arrows.

2. Press the 'M' button. The LCD display will flash 'S-'.
3. Within 3 seconds, press the desired memory button (1, 2, 3, or 4). The display will show 'S-1', 'S-2', etc., indicating the height is saved.

Recalling Memory Presets:

Simply press the corresponding memory button (1, 2, 3, or 4). The desk will automatically move to the saved height.

Anti-Collision Feature:

The desk frame is equipped with a highly sensitive anti-collision system. If the desk encounters an obstacle during adjustment, it will automatically stop and reverse slightly to prevent damage. This feature is adjustable for sensitivity.

MAINTENANCE

Regular maintenance ensures the longevity and optimal performance of your MAIDeSiTe T1 Pro desk frame.

- **Cleaning:** Wipe the desk frame with a soft, damp cloth. Avoid using abrasive cleaners or solvents that could damage the powder-coated finish.
- **Cable Management:** Periodically check all cables for any signs of wear or damage. Ensure cables are neatly routed and not pinched or tangled.
- **Fastener Check:** Every few months, inspect all screws and bolts to ensure they are tight. Re-tighten if necessary.
- **Weight Distribution:** Distribute weight evenly across the desktop. Avoid placing heavy items predominantly on one side.
- **Environmental Conditions:** Operate the desk in a dry environment. Avoid extreme temperatures or high humidity.

TROUBLESHOOTING

If you encounter issues with your MAIDeSiTe T1 Pro desk frame, refer to the following common problems and solutions:

Problem	Possible Cause	Solution
Desk does not move	Power cable disconnected; Control panel locked; Overload; Motor error.	Check power connections; Unlock control panel; Reduce weight on desk; Perform reset (see manual).
Desk moves unevenly	Uneven weight distribution; Loose connections.	Distribute weight evenly; Check and tighten all assembly screws.
Anti-collision feature triggers frequently	High sensitivity setting; Obstacles.	Adjust anti-collision sensitivity (refer to full manual); Clear any potential obstacles.
Noise during operation	Normal motor sound; Loose components.	A slight motor sound is normal (<45 dB); Check for any loose screws or components and tighten.

If the problem persists after attempting these solutions, please refer to the comprehensive troubleshooting guide in your full product manual or contact customer support.

SPECIFICATIONS

Detailed technical specifications for the MAIDeSiTe T1 Pro Electric Height Adjustable Desk Frame.

- **Brand:** MAIDeSiTe
- **Model Number:** T1 Pro
- **Material:** Powder-coated steel
- **Height Adjustment Range:** 72 cm to 120 cm (28.3 inches to 47.2 inches)
- **Width Adjustment Range:** 96 cm to 160 cm (37.8 inches to 63 inches)
- **Lifting Speed:** 30 - 60 mm/sec
- **Maximum Load Capacity:** 80 kg (176 lbs)
- **Noise Level:** <45 dB
- **Lifting Column:** 2-stage
- **Recommended Desktop Size:** 100-180 cm (length) x 50-80 cm (depth)
- **Features:** Electric height adjustment, 4 programmable memory presets, anti-collision system, child safety lock, USB charging port.

15% More Height Range

Flexible and adjustable for all people



Image: Visual representation of the desk's height adjustment capabilities.

Extra Large Retractable Range

Suitable desktop size:

↔ W:50-80cm

↕ L:100-180cm

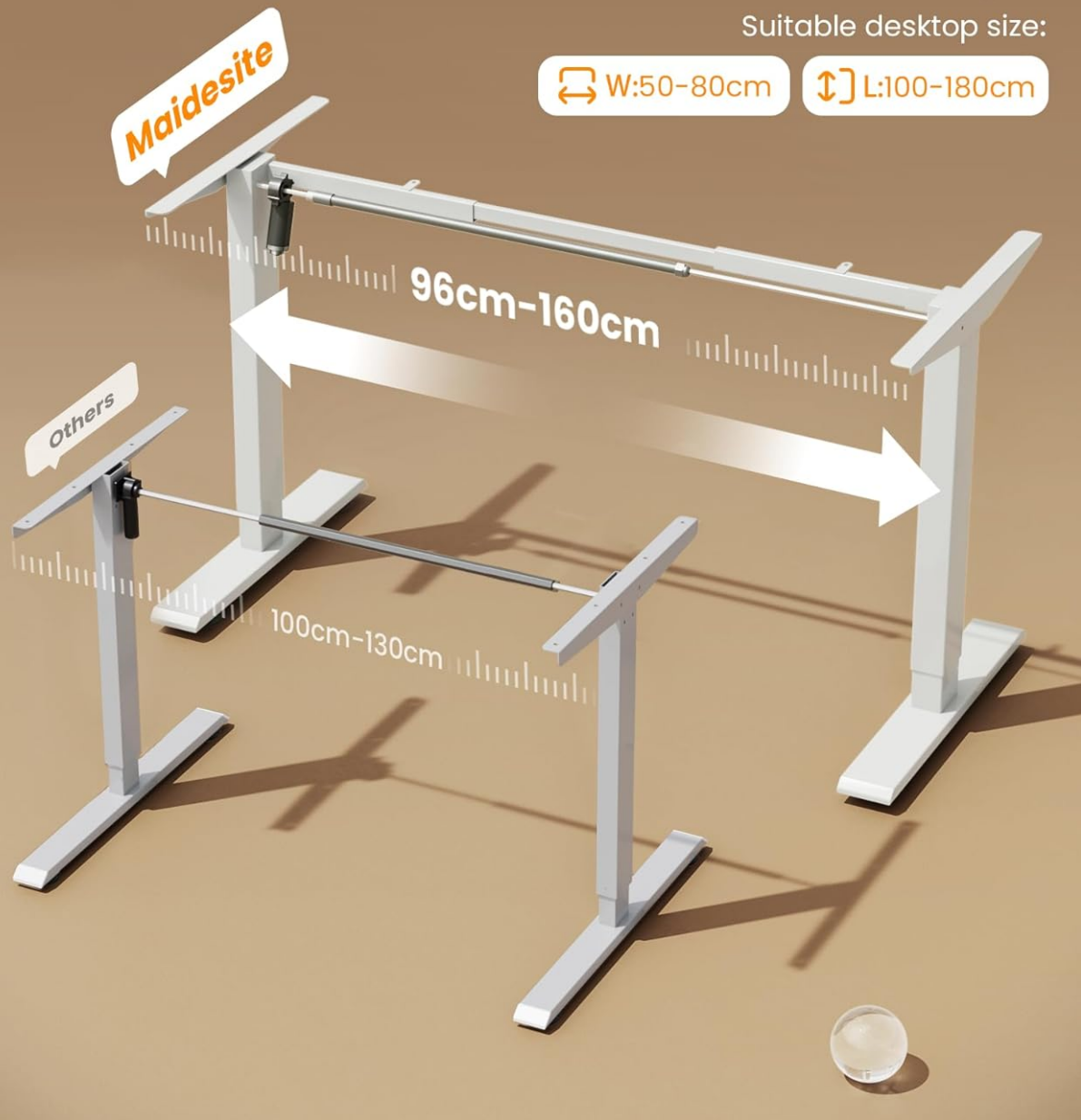


Image: Illustration of the adjustable width range for various desktop sizes.

Superior Load Capacity

Upgraded to 80KG, strongest in its class



Image: The desk frame supporting a significant load, highlighting its 80 kg capacity.

Powerful Motor

Faster, Quieter, Longer-Lasting

Longer-Lasting



5 Years



After-sales

Faster

Maidesite 30mm/s

Other 20mm/s

Quieter

Maidesite 48dB

Others 55dB

Image: Infographic detailing the powerful and quiet motor system.

WARRANTY AND SUPPORT

Warranty Information:

The MAIDeSiTe T1 Pro Electric Height Adjustable Desk Frame comes with a **5-year full warranty**. This warranty covers manufacturing defects and ensures reliable performance under normal use conditions. Please retain your proof of purchase for warranty claims.






Customer Support:

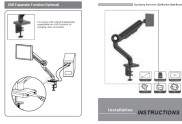
For any questions, technical assistance, or warranty claims, please contact MAIDeSiTe customer support. Refer to the contact information provided in your product packaging or visit the official MAIDeSiTe website for the most up-to-date support details.

Our support team is available to assist you with any issues you may encounter during the setup or operation of your desk frame.

© 2025 MAIDeSiTe. All rights reserved.

Related Documents - T1 Pro

	<p>MAIDESITE Electric Height Adjustable Desk User Manual</p> <p>Comprehensive user manual for the MAIDESITE Electric Height Adjustable Desk, detailing assembly, operation, safety guidelines, and troubleshooting for optimal use. Includes parts list and package contents.</p>
	<p>Maidesite Electric Height Adjustable Desk User Manual</p> <p>User manual for the Maidesite Electric Height Adjustable Desk, covering assembly, operation, and troubleshooting.</p>
	<p>MAIDESITE T1 Pro Standing Desk Frame User Guide</p> <p>This user guide provides instructions and safety information for the MAIDESITE T1 Pro standing desk frame, including assembly steps, part lists, and product specifications.</p>
	<p>Maidesite Standing Desk T2 Pro/T2 Pro Plus User Guide</p> <p>Comprehensive user guide for the Maidesite Standing Desk T2 Pro and T2 Pro Plus, covering safety, assembly, and control panel instructions.</p>
	<p>Maidesite Ergonomic Office Chair: Installation and Adjustment Guide</p> <p>Detailed instructions for assembling and adjusting your Maidesite ergonomic office chair. Includes parts list, hardware guide, step-by-step assembly, and functional adjustments for optimal comfort and ergonomics.</p>



[Maidesite Gas Spring Aluminum LCD Monitor Desk Mount Installation Guide](#)

Comprehensive installation instructions for the Maidesite Gas Spring Aluminum LCD Monitor Desk Mount, covering clamp and grommet base installation, monitor attachment, tilt, swivel, rotation, and cable management.