

BIG RED AT83502T-3AB

BIG RED AT83502T-3AB Torin Hydraulic Jack Pad Instruction Manual

Model: AT83502T-3AB | Brand: BIG RED

INTRODUCTION

This manual provides essential information for the safe and effective use of your BIG RED AT83502T-3AB Torin Hydraulic Jack Pad. This durable rubber pad is designed to protect vehicle frame rails and undercarriages when using a hydraulic floor jack. It features a universal fit and a dual-sided design for various jacking points.

SAFETY INFORMATION

- **Always ensure the vehicle is on a flat, stable surface** before attempting to lift it.
- **Never work under a vehicle supported only by a jack.** Always use appropriate jack stands to support the vehicle after lifting.
- **Verify the jack pad is correctly seated** on both the jack saddle and the vehicle's jacking point before applying load.
- **Inspect the jack pad for wear or damage** before each use. Do not use if cracked, torn, or excessively worn.
- **Do not exceed the load capacity** of your floor jack or the jack pad.
- **Keep hands and feet clear** of the jack and vehicle during lifting and lowering operations.

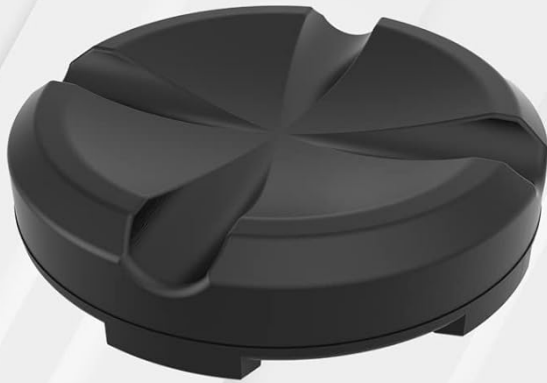
PRODUCT FEATURES

- **Durable Rubber Construction:** Made from robust rubber for enhanced cushioning and crush resistance.
- **Dual-Sided Design:** Features a slotted side for frame rails and a reverse side for flat surfaces, offering versatile application.
- **Paint and Metal Protection:** Designed with a special pattern to prevent damage to vehicle paint, metal gouging, and scraping.

- **Universal Fit:** Compatible with most standard hydraulic floor jacks and vehicles.
- **Increased Jack Height:** Adds approximately one inch (2.54 cm) to the jack's height, providing additional clearance.

Dual Sided

**Slotted Side
For
Frame Rail**



**Reverse Side
For
Flat Surface**

Image: The BIG RED AT83502T-3AB jack pad illustrating its dual-sided design. One side features slots for frame rails, and the reverse side is flat for other jacking points.

SETUP AND INSTALLATION

1. **Prepare the Jack:** Ensure your hydraulic floor jack is clean and in good working order.
2. **Select the Correct Side:**
 - For vehicles with pinch welds or frame rails, use the slotted side of the jack pad.
 - For flat jacking points, such as subframes or differential housings, use the flat reverse side.
3. **Position the Pad:** Place the selected side of the jack pad securely onto the saddle of your hydraulic floor jack. The groove at the bottom of the pad is designed to fix it to the jack's saddle.
4. **Verify Stability:** Ensure the pad is stable on the jack saddle before positioning the jack under the vehicle.

Universal Fit



Image: The BIG RED AT83502T-3AB jack pad positioned on the saddle of a red hydraulic floor jack, demonstrating its universal fit.

OPERATING INSTRUCTIONS

1. **Vehicle Preparation:** Park the vehicle on a firm, level surface. Engage the parking brake and block the wheels that will remain on the ground.
2. **Position the Jack:** Roll the hydraulic floor jack, with the pad installed, under the designated jacking point of the vehicle. Ensure the pad is directly under the jacking point and properly aligned.
3. **Lift the Vehicle:** Operate your hydraulic floor jack according to its manufacturer's instructions to slowly raise the vehicle. Observe the jack pad to ensure it remains stable and securely grips the vehicle's jacking point.
4. **Install Jack Stands:** Once the vehicle is at the desired height, immediately place appropriately rated jack stands under the vehicle's designated support points. Lower the vehicle slowly onto the jack stands.
5. **Lower the Vehicle:** When work is complete, raise the vehicle slightly with the jack to remove the jack stands. Then, slowly lower the vehicle to the ground using the jack's release mechanism.
6. **Remove Jack:** Once the vehicle is fully on the ground, remove the hydraulic floor jack and the jack pad.



Image: A hydraulic jack with the BIG RED AT83502T-3AB jack pad lifting a vehicle, demonstrating proper application.

MAINTENANCE

- **Cleaning:** Wipe the jack pad clean with a damp cloth after each use to remove dirt, grease, or debris.
- **Inspection:** Regularly inspect the rubber pad for any signs of wear, cracks, tears, or deformation. Replace the pad immediately if any damage is observed.
- **Storage:** Store the jack pad in a clean, dry place away from direct sunlight and extreme temperatures to prolong its lifespan.

TROUBLESHOOTING

The BIG RED AT83502T-3AB jack pad is a simple accessory. Most issues relate to improper use or compatibility.

Problem	Possible Cause	Solution
---------	----------------	----------

Problem	Possible Cause	Solution
Pad slips or is unstable on jack saddle.	Incorrect placement; saddle or pad is dirty/greasy; pad not compatible with jack saddle shape.	Ensure pad is fully seated and clean. Verify compatibility with your specific jack model.
Pad damages vehicle jacking point.	Incorrect side of pad used; pad is worn/damaged; excessive load.	Use the appropriate side (slotted for frame rails, flat for flat surfaces). Inspect pad for damage. Ensure load capacity is not exceeded.
Pad deforms or cracks prematurely.	Exceeding load capacity; improper storage (e.g., extreme temperatures, chemicals); manufacturing defect.	Adhere to load limits. Store properly. If new and damaged, contact support for warranty.

SPECIFICATIONS

Attribute	Detail
Model Number	AT83502T-3AB
Material	Durable Rubber
Color	Black
Diameter	Approximately 10 cm (4 inches)
Thickness	Approximately 2.54 cm (1 inch)
Item Dimensions (L x W x H)	10.6 x 10.6 x 2.7 Centimetres
Item Weight	178.6 g (6.3 Ounces)
Compatible Vehicle Type	Car (Universal Fit for most floor jacks and vehicles)



Image: A diagram illustrating the key dimensions of the jack pad, including its 4-inch diameter and 1-inch thickness.

WARRANTY AND SUPPORT

This BIG RED AT83502T-3AB Torin Hydraulic Jack Pad includes a **limited 1-year manufacturer warranty**. For warranty claims, technical assistance, or product inquiries, please contact Torin customer support. Refer to your purchase documentation for specific contact details or visit the official BIG RED/Torin website.

Manufacturer Contact Information: ISSAQUAH, WA, 98027 US