



[Manuals.plus](#) /

> [Bonnlo](#) /

> Bonnlo Low Loft Bed Full Size Instruction Manual

Bonnlo B08DRKBTPN

Bonnlo Low Loft Bed Full Size Instruction Manual

Model: B08DRKBTPN

INTRODUCTION

This manual provides detailed instructions for the assembly, operation, and maintenance of your Bonnlo Low Loft Bed Full Size. Please read all instructions carefully before beginning assembly and retain this manual for future reference. This low loft bed is designed to maximize space in smaller rooms, offering an elevated sleeping area with ample room underneath for various activities or storage.

SAFETY INFORMATION

- Do not jump off, on, or hang from the bed.
- The surface of the mattress must be at least 5 inches below the upper edge of the guardrails to ensure user safety.
- Ensure all connections are securely tightened before use and periodically check for tightness.
- This bed is constructed from 100% solid pine wood and is designed for stability.
- Maximum weight capacity: 264.55 LBS.

COMPONENTS LIST

Before assembly, verify that all components listed below are present and undamaged. If any parts are missing or damaged, please contact customer support.

- Footboard
- Guardrails (Full-length)
- Headboard
- Slats (Thick solid wood slats with 2 central beams and mute felter strips for noise reduction)
- Inclined Ladder
- Hardware (screws, L-shaped metal plates, etc.)

SETUP AND ASSEMBLY

Assembly of the Bonnlo Low Loft Bed is designed to be straightforward. All parts are labeled, and detailed instructions are provided. It is recommended to have two people for assembly.

1. Unpack all components and lay them out on a clean, soft surface to prevent scratching.
2. Identify each part using the provided labels and cross-reference with the parts list in your included assembly guide.
3. Follow the step-by-step instructions in the assembly guide. Pay close attention to the orientation of each board.
4. Secure all connections firmly. For enhanced stability, ensure all screws are fully tightened.
5. Attach the inclined ladder securely using the provided L-shaped metal plates for additional solidity.
6. Install the thick solid wood slats, ensuring the mute felter strips are correctly positioned to reduce noise.
7. Once assembled, ensure the bed is stable and all guardrails are properly installed.



Image: The Bonnlo Low Loft Bed, fully assembled, featuring its low profile and inclined ladder, providing space underneath.



Image: Detailed dimensions of the Bonnlo Low Loft Bed, including length, width, height, and under-bed clearance.

OURS

OTHERS

Inclined Ladder Design



**The slant angle will fit with user body,
More safer when climbing**

Vertical Ladder Design



**This could be dangerous since the feet
could easy slip off rungs**

VS

Image: A visual comparison highlighting the safety and comfort benefits of the inclined ladder design compared to a vertical ladder.

Extra L-Shaped Metal Plate for More Solid Ladder



Image: Close-up view of the L-shaped metal plate, demonstrating how it reinforces the ladder for increased stability.

OPERATING INSTRUCTIONS

The Bonnlo Low Loft Bed is designed for sleeping and providing additional space underneath. It is suitable for kids, young teens, and adults within the specified weight limit.

- Use a full-size mattress with a recommended thickness of 8 inches. Ensure the mattress surface is at least 5 inches below the top of the guardrails.
- Utilize the space underneath the bed for storage, a play area, or a study nook. The 33-inch clearance from bed slat to floor provides ample room.
- Always use the inclined ladder for safe access to and from the bed.



Image: The Bonnlo Low Loft Bed configured with a second bed placed underneath, showcasing its space-saving versatility.

MAINTENANCE

Regular maintenance will help prolong the life and appearance of your Bonnlo Low Loft Bed.

- **Cleaning:** Wipe down the wooden surfaces with a soft, damp cloth. Avoid harsh chemicals or abrasive cleaners that could damage the paint finish.
- **Tightness Check:** Periodically (e.g., every 3-6 months) check all screws and bolts to ensure they remain tight. Re-tighten as necessary to maintain stability.
- **Slat Inspection:** Inspect the wooden slats for any signs of wear or damage. The bed features sturdy 100% wood slats with a noise-free design.
- **Floor Protection:** The bed legs are equipped with pads to protect your floor from scratches. Ensure these pads remain intact.

Sturdy Loft Bed

1

Sturdy Slats

Made of 100%
Wood Slats



2

Noise Free Design

Non-woven strip to
reduce noise



3

Leg with Pads

Protecting the floor
from scratch

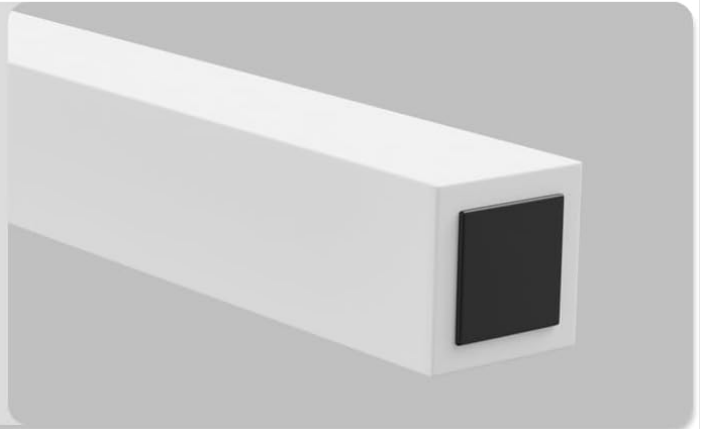


Image: Close-up details of the bed's construction, highlighting the sturdy slats, noise-free design elements, and protective leg pads.

TROUBLESHOOTING

Problem	Possible Cause	Solution
Bed wobbles or feels unstable	Loose screws or improper assembly.	Re-check all connections and tighten all screws firmly. Ensure all parts are correctly aligned according to the assembly instructions.
Squeaking noises	Loose connections or friction between wood parts/slats.	Tighten all bolts and screws. The bed is designed with mute felter strips on slats to reduce noise; ensure these are properly placed.

Problem	Possible Cause	Solution
Missing or damaged parts upon delivery	Shipping damage or packaging error.	Contact Bonnlo customer service immediately with your order details and a description of the missing/damaged parts for replacement.
Mattress does not fit properly	Incorrect mattress size or thickness.	Ensure you are using a Full-size mattress. The recommended mattress thickness is 8 inches, and it must be at least 5 inches below the guardrail top.

SPECIFICATIONS

Feature	Detail
Brand	Bonnlo
Model	Low Loft Bed Full Size
Size	Full
Product Dimensions	78.7"L x 56.7"W x 47.2"H
Color	White
Material	100% Solid Pine Wood
Finish Type	Painted
Special Feature	Inclined ladder, High Guard Rail, Space Saving Design
Ground To Item Distance	33 Inches (under-bed clearance)
Weight Capacity	264.55 LBS
Assembly Required	Yes
Recommended Mattress Thickness	8 inches

WARRANTY AND SUPPORT

For any questions, concerns, or to report missing/damaged parts, please contact Bonnlo customer support. While specific warranty details are not provided in this manual, please refer to your purchase documentation or the seller's website for warranty information.

Contact Information: Please refer to the contact details provided at the point of purchase or on the official Bonnlo website.