

Manuals+

[Q & A](#) | [Deep Search](#) | [Upload](#)

manuals.plus /

- › [HERCHR](#) /
- › [HERCHR Digital Sports Stopwatch with Alarm Function - User Manual](#)

HERCHR HERCHRmucts67edn

HERCHR Digital Sports Stopwatch with Alarm Function - User Manual

Model: HERCHRmucts67edn

1. INTRODUCTION

This manual provides comprehensive instructions for the operation and maintenance of your HERCHR Digital Sports Stopwatch. Designed for coaches, referees, and athletes, this stopwatch offers precise timing, a large LCD display, and an alarm function. Please read this manual thoroughly before using the device to ensure proper functionality and longevity.

Digital Stopwatch with Clock Calendar Alarm



Figure 1: HERCHR Digital Sports Stopwatch. This image shows the stopwatch displaying a time of 9:35:57, held in a hand with a track runner in the background, illustrating its use in sports.

2. KEY FEATURES

- **Large LCD Screen:** Provides clear and easy-to-read digital display.
- **Time Display:** Shows calendar, clock (hour, minute, second, week, month, day) with 12/24 hour format selection.
- **Lap and Split Measurement:** Records both lap and split times, measuring up to 10 hours in 1/100 second increments.
- **Durable Construction:** Made from high-quality Acrylonitrile Butadiene Styrene (ABS) material, ensuring robustness and long service life.
- **Water Resistance:** Designed for daily water resistance.
- **Ergonomic Design:** Pocket-sized and comfortable to hold, with responsive buttons.
- **Shockproof and Anti-magnetic:** Enhanced durability and reliability.

3. SETUP

3.1 Initial Power On

The stopwatch is typically ready for use upon arrival. If the screen is blank, ensure the battery is correctly installed. No specific power-on button is usually required; the device activates when a button is pressed or when the battery is inserted.

3.2 Setting Time and Date

1. In normal time display mode, press the **MODE** button until the time setting interface appears.
2. Use the **START/STOP** button to adjust the flashing digit (hours, minutes, seconds, month, day, week).
3. Press the **RESET** button to move to the next setting.
4. Once all settings are complete, press **MODE** again to exit the setting mode.



Figure 2: Stopwatch button layout. This image highlights the three main buttons: Start/Stop, Record/Reset, and Reading Timing, essential for setup and operation.

4. OPERATING INSTRUCTIONS

4.1 Stopwatch Mode

1. From the normal time display, press the **MODE** button to enter stopwatch mode. The display will show "0:00:00".
2. Press **START/STOP** to begin timing.
3. Press **START/STOP** again to pause timing.
4. To resume timing, press **START/STOP**.
5. To reset the stopwatch to zero, press **RESET** while the stopwatch is paused.

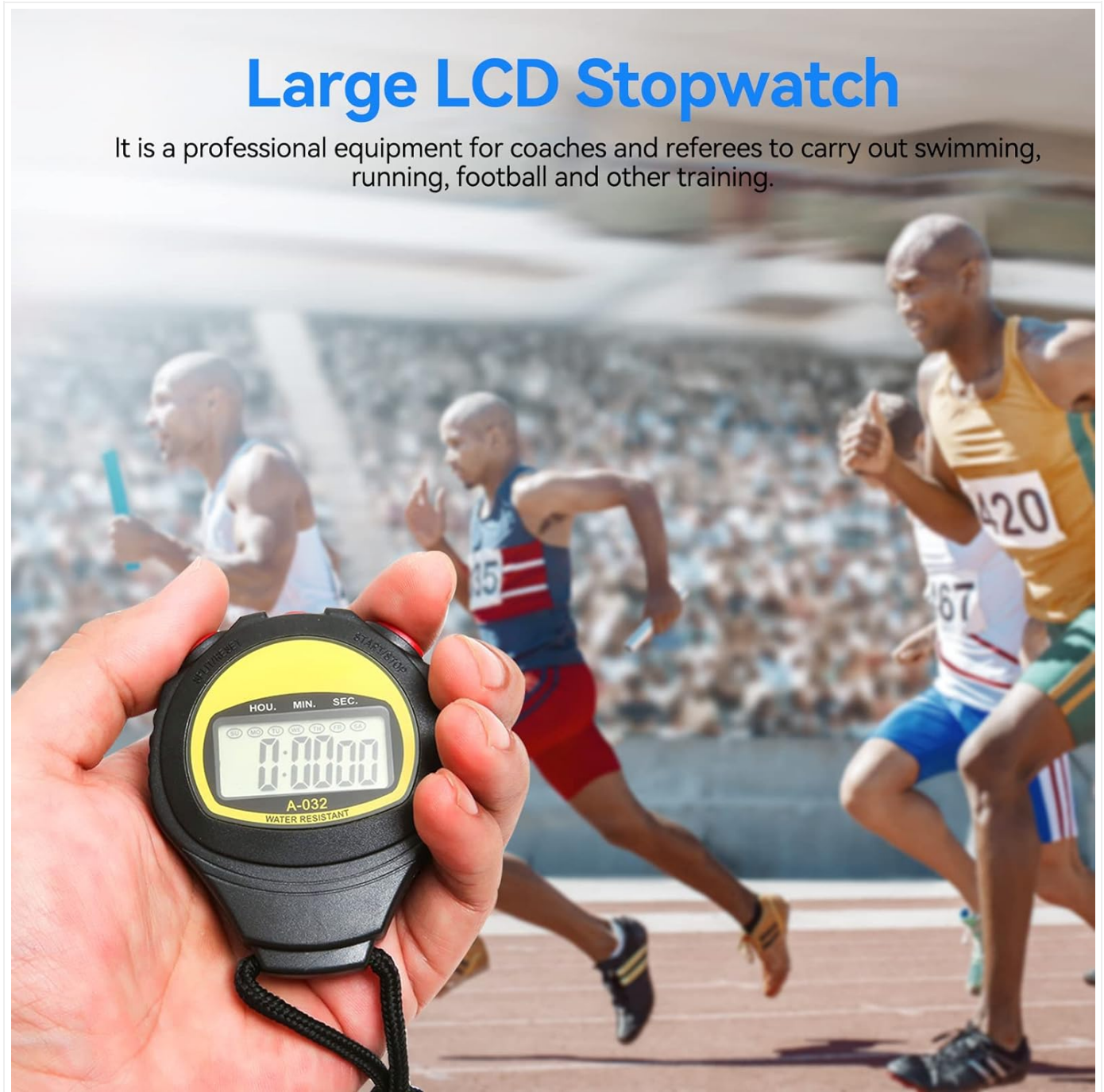


Figure 3: Stopwatch in timing mode. The large LCD screen clearly shows the time, ready for precise measurement.

4.2 Lap and Split Timing

This stopwatch can record both lap and split times. The device can measure up to 10 hours with 1/100 second accuracy.

1. In stopwatch mode, press **START/STOP** to begin timing.
2. To record a split time (time elapsed from start to a specific point), press **RECORD/RESET**. The split time will be displayed temporarily. The stopwatch continues to run in the background.

3. To view the running time again, press **RECORD/RESET**.
4. To record a lap time (time for a segment of an event), press **RECORD/RESET** at the end of each lap. The lap time will be displayed.
5. To stop the overall timing, press **START/STOP**.
6. To review recorded lap/split times, use the **READING TIMING** button (if available, otherwise refer to the general reset/mode button for reviewing).

4.3 Alarm Function

The stopwatch includes an alarm function.

1. From the normal time display, press **MODE** twice to enter alarm setting mode.
2. Use the **START/STOP** button to adjust the flashing hour.
3. Press the **RESET** button to move to the minute setting.
4. Use the **START/STOP** button to adjust the flashing minute.
5. Press **MODE** to activate/deactivate the alarm and exit setting mode. An alarm icon will typically appear on the display when activated.

5. MAINTENANCE

- **Cleaning:** Wipe the stopwatch with a soft, dry cloth. For stubborn dirt, a slightly damp cloth can be used. Avoid abrasive cleaners or solvents.
- **Water Resistance:** The stopwatch is designed for daily water resistance. Avoid submerging it in water or exposing it to high-pressure water jets. Do not press buttons underwater.
- **Storage:** Store the stopwatch in a cool, dry place away from direct sunlight and extreme temperatures.
- **Battery Replacement:** When the display dims or becomes erratic, it's time to replace the battery. This typically requires opening the back casing. Refer to a professional if unsure.
- **Impact:** While shockproof, avoid dropping the stopwatch or subjecting it to severe impacts to prevent damage.

6. TROUBLESHOOTING

Problem	Possible Cause	Solution
Display is blank or dim.	Low or dead battery.	Replace the battery.
Buttons are unresponsive.	Battery issue or internal malfunction.	Replace battery. If problem persists, contact customer support.
Incorrect time/date displayed.	Time/date not set correctly.	Refer to Section 3.2 "Setting Time and Date" to adjust.
Stopwatch not timing accurately.	Internal error or extreme conditions.	Reset the device by removing and reinserting the battery. Avoid extreme temperatures.

7. SPECIFICATIONS

- **Brand:** HERCHR
- **Model Number:** HERCHRmucts67edn
- **Material:** Acrylonitrile Butadiene Styrene (ABS)
- **Color:** Black

- **Product Dimensions (L x W x H):** 7.2 x 6.3 x 1.8 cm (2.83 x 2.48 x 0.71 inches)
- **Item Weight:** 45 grams (1.59 ounces)
- **Display Size:** 7.4 Centimeters (2.91 inches)
- **Timing Accuracy:** 1/100 second
- **Maximum Timing Capacity:** 10 hours
- **Features:** Stopwatch, Clock, Calendar, Alarm, Lap/Split Timing, Daily Water Resistant, Shockproof, Anti-magnetic.
- **UPC:** 782943506664



Figure 4: Product dimensions. This image provides a visual representation of the stopwatch's size with measurements.

8. WARRANTY AND SUPPORT

Information regarding specific warranty terms is not available in the provided product details. For warranty claims or technical support, please contact your retailer or the manufacturer, HERCHR, directly. Keep your purchase receipt as proof of purchase.

Return Policy: The product typically comes with a 30-day return/replacement policy from the date of purchase, subject to retailer terms.



© 2026 HERCHR. All rights reserved.

This manual is for informational purposes only. Specifications are subject to change without notice.