

[manuals.plus](#) /

› [Gillette](#) /

› [King C. Gillette Cordless Beard Trimmer for Men, Kit includes 1 Trimmer, 3 Interchangeable Combs, 1 Cleaning Brush, 1 Charger, 1 Travel Bag, BLUE 6 Piece Set Beard Trimmer](#)

## Gillette 5513

# King C. Gillette Cordless Beard Trimmer Instruction Manual

Model: 5513

## INTRODUCTION

The King C. Gillette Cordless Beard Trimmer is engineered for precise and efficient beard grooming. This device combines over a century of styling expertise with modern technology to provide a superior trimming experience. Its cordless design offers flexibility, while the long-lasting sharp blades ensure consistent, barber-quality results. The trimmer is designed for versatility, accommodating various beard styles from stubble to long, thanks to its interchangeable comb attachments.



Image: The King C. Gillette Cordless Beard Trimmer, showcasing its sleek design and ergonomic grip.

## WHAT'S INCLUDED

Your King C. Gillette Cordless Beard Trimmer kit includes the following components:

- 1 x Cordless Beard Trimmer
- 1 x Short Beard Comb (for 1mm stubble)
- 1 x Long Beard Comb (for 3-11mm lengths)
- 1 x Stubble Comb (for 13-21mm lengths)
- 1 x Charger
- 1 x Cleaning Brush
- 1 x Travel Bag/Storage Pouch

# WHAT'S IN THE BOX



Image: A visual representation of all items included in the King C. Gillette Beard Trimmer package: the trimmer, three comb attachments, a cleaning brush, a charger, and a zip pouch.

## SETUP

### Charging the Trimmer

Before first use, fully charge your King C. Gillette Beard Trimmer. Connect the charger to the trimmer and plug it into a power outlet. The charging indicator light will illuminate. A full charge provides up to 50 minutes of cordless trimming time. For optimal battery life, avoid overcharging and allow the battery to fully deplete occasionally before recharging.





## WASHABLE HEAD & COMBS



**1 CHARGE =  
1 MONTH\***

\*based on 3-5 minutes trim, 3 times a week

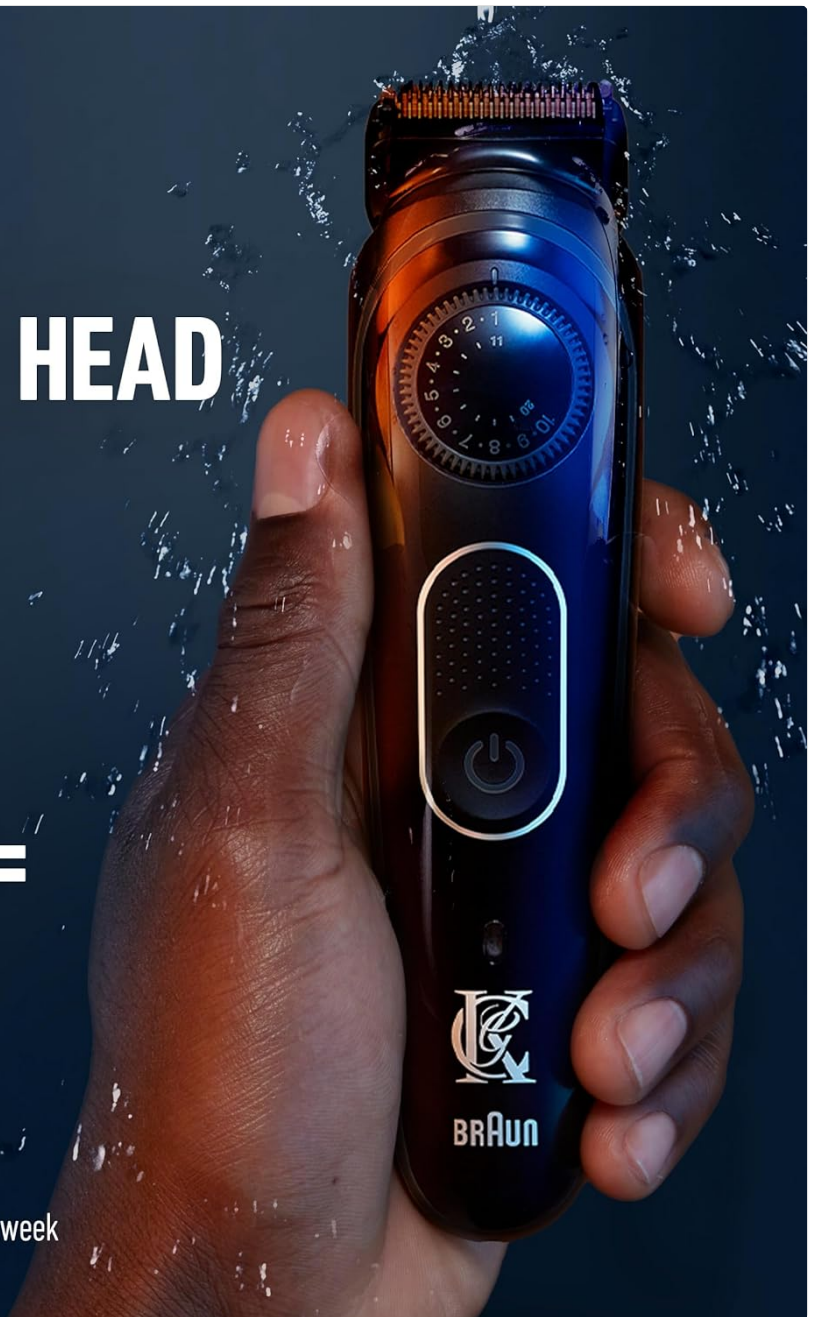


Image: The trimmer being held under running water, illustrating its washable design, and a battery icon indicating its long charge life.

### Attaching and Removing Comb Attachments

To attach a comb, align the comb with the trimmer head and push it firmly until it clicks into place. To remove, gently pull the comb away from the trimmer head. Ensure the trimmer is turned off before attaching or removing any combs.

## OPERATING INSTRUCTIONS

### Adjusting Trim Length

The King C. Gillette Beard Trimmer features a precision wheel with 40 length settings, allowing for precise adjustments in 0.5mm steps. Rotate the precision wheel to select your desired beard length. The selected length will be displayed on the trimmer body.

# PRECISION WHEEL

## 40 LENGTH SETTINGS

in precise 0.5 mm steps  
for all beard styles



Image: A close-up of the trimmer's precision wheel, highlighting the 40 length settings in 0.5mm steps for various beard styles.

### Trimming Techniques

For best results, ensure your beard is clean and dry before trimming. Use smooth, even strokes against the direction of hair growth. Start with a longer setting and gradually reduce the length until you achieve your desired style. For detailing and shaping, remove the comb attachment and use the bare blade.



A close-up photograph of a man with a dark beard and mustache, looking slightly to the side. He is holding a black electric beard trimmer to his cheek, actively trimming his beard. The background is a solid, warm brown color. On the left side of the image, there are four white, diamond-shaped icons pointing to the right, each preceding a line of text.

**FOR ALL BEARD  
STYLES**

**PRECISE &  
EFFICIENT  
TRIM**

**USB CHARGER**

**BUILT TO LAST**

Image: A man using the King C. Gillette Beard Trimmer to precisely trim his beard, demonstrating its ease of use for all beard styles.

## **MAINTENANCE AND CLEANING**

To maintain optimal performance and hygiene, clean your trimmer regularly. The trimmer head and comb attachments are washable. After each use, turn off the trimmer and remove the comb. Rinse the trimmer head and combs under running water. Use the included cleaning brush to remove any trapped hairs from the blades. Allow all parts to air dry completely before reassembling or storing.



# WASHABLE HEAD & COMBS



# 1 CHARGE = 1 MONTH\*

\*based on 3-5 minutes trim, 3 times a week

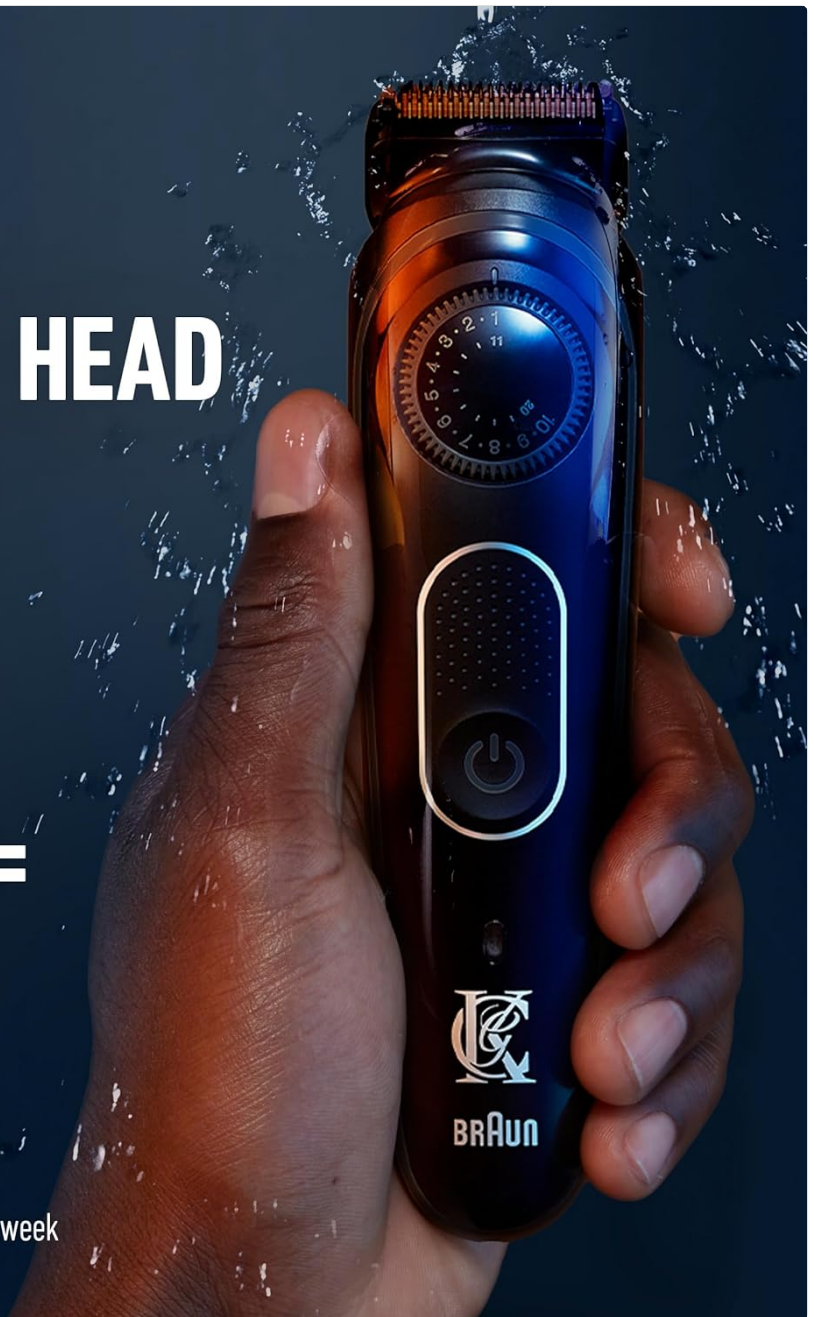


Image: The trimmer being rinsed under water, emphasizing its washable head and combs for easy cleaning.

## TROUBLESHOOTING

Problem	Possible Cause / Solution
Trimmer does not turn on or charge.	Ensure the charger is properly connected to both the trimmer and a working power outlet. The battery may be fully depleted; allow sufficient charging time.
Trimmer pulls hairs or cuts unevenly.	The blades may be clogged with hair; clean the trimmer head and combs thoroughly. Ensure the trimmer is fully charged for optimal power. Use smooth, consistent strokes.
Battery life is shorter than expected.	Ensure the trimmer is fully charged before each use. Battery performance can vary with usage intensity and age. The trimmer provides up to 50 minutes of trim time per charge.

## SPECIFICATIONS

Feature	Detail
Model Number	5513
Product Dimensions	4.37 x 2.21 x 8.98 inches
Item Weight	10.56 ounces
Battery Type	1 Lithium Ion battery (included)
Run Time	Up to 50 minutes (cordless)
Comb Attachments	Short beard, Long beard, Stubble
Length Settings	40 (in 0.5mm steps)
Washable	Head and combs
UPC	047400670518

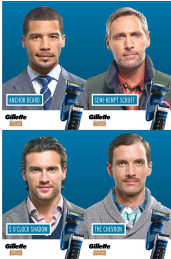




## WARRANTY AND SUPPORT

The King C. Gillette Cordless Beard Trimmer typically comes with a manufacturer's warranty. Based on customer feedback, a two-year warranty is often provided, covering defects in materials and workmanship under normal use. Please refer to the warranty card included in your product packaging for specific terms and conditions.

For technical support, warranty claims, or further assistance, please contact Gillette customer service. Contact information can usually be found on the product packaging or the official Gillette website. When contacting support, please have your product model number (5513) and proof of purchase readily available.

### Related Documents - 5513



	<p><a href="#">Gillette Fusion ProGlide Styler: Beard Grooming Instructions for Four Styles</a></p> <p>Learn how to achieve four distinct beard styles – Anchor Beard, Semi-Kempt Scruff, 5 O'Clock Shadow, and The Chevron – with step-by-step instructions using the Gillette Fusion ProGlide Styler.</p>
	<p><a href="#">How to Shave Your Face: A Guide to Men's Shaving</a></p> <p>A comprehensive guide to achieving a smooth, comfortable shave with expert tips on hydration, shaving cream application, blade care, shaving techniques, and post-shave care for men, featuring Gillette products.</p>
	<p><a href="#">Gillette Razor and Blade Compatibility Guide   FAQs &amp; Tips</a></p> <p>Find answers to common questions about Gillette razors and blades, including compatibility charts, power razor features, subscription services, recycling, and shaving tips.</p>
	<p><a href="#">Braun MGK 3080 Grooming Kit User Manual and Safety Guide</a></p> <p>This comprehensive user manual provides detailed instructions for the Braun MGK 3080 grooming kit. It covers safety precautions, product description, charging, usage for beard trimming, hair clipping, precision styling, ear/nose trimming, and body grooming, as well as cleaning, maintenance, battery removal, and warranty information for both the USA and Canada. Available in English, French, and Spanish.</p>
	<p><a href="#">Braun AIO3 Type 5513 Cordless Trimmer User Manual &amp; Guide</a></p> <p>Comprehensive user manual for the Braun AIO3 Type 5513 cordless trimmer, covering setup, operation, maintenance, safety, and warranty information.</p>



### [Gillette BRAUN Intimate Hair Trimmer Type 5544 User Manual](#)

User manual for the Gillette BRAUN Intimate Hair Trimmer Type 5544. Provides detailed instructions on safe operation, charging, cleaning, maintenance, and warranty information for this personal grooming device.