



[Manuals.plus](#) /

› [MICSIU](#) /

› MICSIU A20001P-2PK Dusk to Dawn Outdoor Wall Sconce Instruction Manual

MICSIU A20001P-2PK

MICSIU A20001P-2PK Dusk to Dawn Outdoor Wall Sconce Instruction Manual

Model: A20001P-2PK

1. INTRODUCTION

Thank you for purchasing the MICSIU Dusk to Dawn Outdoor Wall Sconce. This manual provides essential information for the safe installation, operation, and maintenance of your new light fixtures. Please read these instructions thoroughly before installation and retain them for future reference.



Image 1.1: Two MICSIU Dusk to Dawn Outdoor Wall Sconces, showcasing their modern black metal frame and clear glass panels.

2. SAFETY INFORMATION

- **WARNING:** Risk of electric shock. Disconnect power at the fuse box or circuit breaker before installation or servicing.
- All electrical connections must be in accordance with local codes, ordinances, or the National Electric Code (NEC). Consult a qualified electrician if you are unfamiliar with proper electrical wiring connections.
- Use only UL or ETL listed wire connectors.
- This fixture is designed for 120V AC power supply.
- Do not exceed the maximum wattage of 100W per bulb.
- Ensure the fixture is securely mounted to a structural element.
- This product is suitable for wet locations.

3. PACKAGE CONTENTS

Verify that all components are present before beginning installation:

- 2 x MICSIU Outdoor Wall Sconce Fixtures
- Mounting Hardware (crossbar, mounting screws, wire nuts, washers, cap nuts)
- Instruction Manual

Note: Bulbs are not included. This fixture requires E26 base bulbs, maximum 100W.

4. SPECIFICATIONS



Image 4.1: Dimensions of the MICSIU Outdoor Wall Sconce, showing a height of 14.5 inches, width of 5 inches, and depth from wall of 7.25 inches.

Feature	Specification
Brand	MICSIU
Model Number	A20001P-2PK (20001)
Dimensions (L x W x H)	7.25" x 5" x 14.5"
Color	Black
Material	Metal, Glass

Feature	Specification
Voltage	120 Volts
Max Wattage per Bulb	100 Watts
Bulb Base	E26
Special Features	Waterproof, Dusk to Dawn Sensor
Installation Type	Wall Mount
Indoor/Outdoor Usage	Outdoor
Certifications	ETL Listed

MICSIU Outdoor Wall Lantern

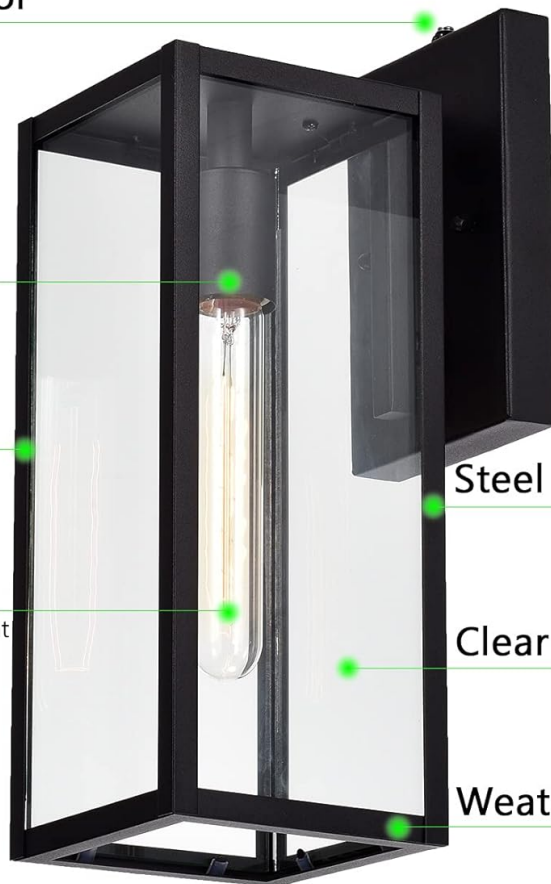
Dusk to Dawn Sensor

E26 Base Socket

Textured Black

Bulb Not Included

Suggest LED bulb or Incandescent bulb. ST58 or T10 bulb would be better.



Steel and Aluminum

Clear Glass Shade

Weather-resistant

- Certification: **ETL LISTED**
- Max Wattage Per Socket: **100W**
- Voltage: **120V**

Image 4.2: Diagram highlighting key features of the MICSIU Outdoor Wall Lantern, including the Dusk to Dawn Sensor, E26 Base Socket, Textured Black finish, Steel and Aluminum construction, Clear Glass Shade, Weather-resistant design, ETL Listing, Max Wattage of 100W, and 120V Voltage.

5. SETUP AND INSTALLATION

Follow these steps for proper installation. It is recommended to have a second person assist during

installation.

1. **Turn off Power:** Before starting, ensure the power supply to the junction box is turned off at the circuit breaker.
2. **Remove Mounting Bracket:** Detach the crossbar mounting bracket from the light fixture's back plate.
3. **Attach Mounting Bracket:** Secure the crossbar mounting bracket to the junction box using the provided mounting screws.
4. **Connect Wires:** Connect the electrical wires correctly using the wire nuts. Match black to black (live), white to white (neutral), and green/bare copper to green/bare copper (ground).
5. **Secure Fixture:** Align the fixture's back plate with the mounting bracket. Fix the back plate to the crossbar mounting bracket using the washers and cap nuts.
6. **Install Bulb:** Carefully install an E26 base bulb (not included) into the socket. Do not overtighten.
7. **Restore Power:** Once installation is complete and secure, restore power at the circuit breaker.



Image 5.1: Visual guide for installation, showing steps for attaching the mounting bracket, connecting wires, securing the back plate, and installing the E26 bulb.



Image 5.2: A hand demonstrates the process of screwing an E26 base bulb into the fixture's socket.

6. OPERATING INSTRUCTIONS

This MICSIU outdoor wall sconce features a built-in dusk-to-dawn sensor for automatic operation.

- **Automatic On:** The integrated photocell sensor detects ambient light levels. When natural light diminishes at dusk, the fixture will automatically turn on.
- **Automatic Off:** As natural light increases at dawn, the sensor will detect sufficient light, and the fixture will automatically turn off.
- No manual intervention is required for daily operation once installed correctly.

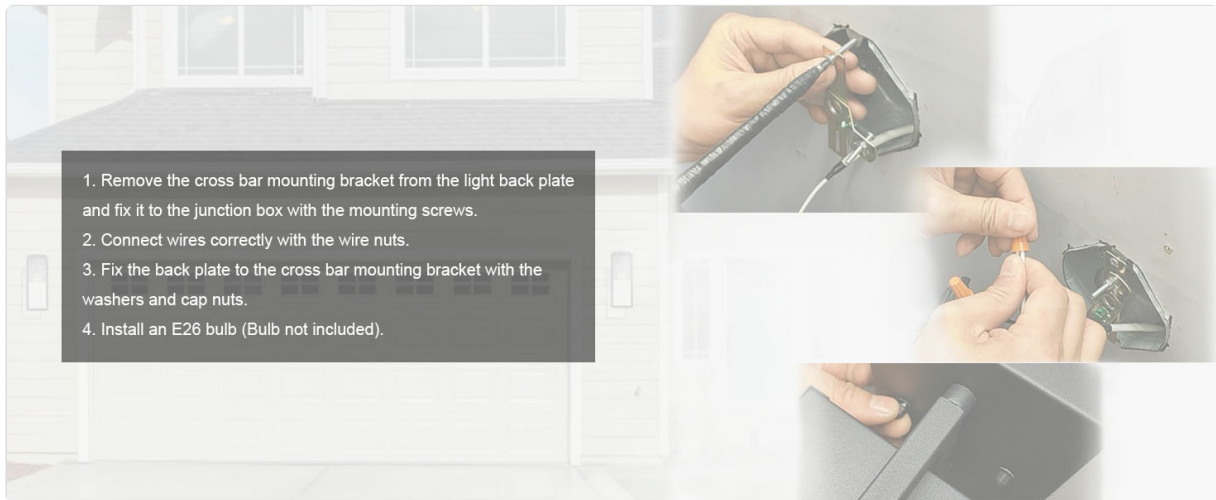


Image 6.1: Depiction of the dusk to dawn sensor, illustrating how the light automatically turns off during the day (sun icon) and turns on at night (moon icon).

7. MAINTENANCE

- **Cleaning:** To clean the fixture, ensure power is off. Wipe with a soft, damp cloth. Do not use abrasive cleaners or solvents, as they may damage the finish or glass.
- **Bulb Replacement:** Ensure power is off before replacing bulbs. Allow the old bulb to cool completely before removal. Install a new E26 base bulb, not exceeding 100W.
- **Inspection:** Periodically inspect the fixture for any signs of wear, damage, or loose connections. Address any issues promptly.

8. TROUBLESHOOTING

Problem	Possible Cause	Solution
Light does not turn on.	No power to the fixture. Bulb is faulty or loose. Dusk-to-dawn sensor is obstructed or in daylight.	Check circuit breaker and wall switch. Replace bulb or ensure it is screwed in tightly. Ensure sensor is not blocked and it is dark enough for activation.
Light stays on during the day.	Dusk-to-dawn sensor is obstructed or faulty. Light from another source is hitting the sensor.	Ensure sensor is clean and unobstructed. Relocate fixture if external light sources interfere.
Light flickers.	Loose wiring connection. Faulty bulb.	Turn off power and check all wire connections. Replace bulb.

9. WARRANTY AND SUPPORT

MICSIU provides a **12-month warranty** against any defects in materials and workmanship from the date of purchase. This warranty covers manufacturing defects under normal use.

For warranty claims, technical support, or any questions regarding your product, please contact MICSIU customer service through the retailer where the product was purchased. Please have your purchase receipt and model number (A20001P-2PK) available.