

Manuals.plus /

› sam Creative /

› Sam Creative Classic Magnetic Whiteboard 100x200 cm User Manual

sam Creative WBCLS100200

Sam Creative Classic Magnetic Whiteboard User Manual

Model: WBCLS100200 | Size: 100x200 cm

1. INTRODUCTION

This manual provides instructions for the Sam Creative Classic Magnetic Whiteboard, model WBCLS100200. This whiteboard is designed for regular use in various environments, including offices, schools, and homes. It features a magnetic surface for attaching documents and an elegant, stable aluminum frame for durability.

2. PRODUCT FEATURES

- Durable aluminum frame with robust plastic corners.
- High-quality lacquered steel writing surface for smooth writing.
- Magnetic surface compatible with all types of magnets for attaching notes and documents.
- Easy to write on and wipe clean with dry-erase whiteboard markers.
- Includes a practical accessory tray for markers and erasers.
- Supplied with all necessary mounting hardware.
- Can be mounted in either portrait (vertical) or landscape (horizontal) orientation.

3. SETUP AND INSTALLATION

The Sam Creative Classic Whiteboard comes with all necessary mounting hardware for installation. Please ensure you have appropriate tools (e.g., drill, level, screwdriver) before beginning.

3.1 Unpacking

Carefully remove the whiteboard from its packaging. Inspect the board and all components for any signs of damage. Retain the packaging for future transport or storage if needed.

3.2 Mounting Options

The whiteboard can be mounted horizontally (landscape) or vertically (portrait) to best suit your space and needs.

3.3 Wall Mounting Instructions

1. **Choose Location:** Select a suitable location on a sturdy wall. Ensure there are no hidden electrical wires or pipes behind the drilling points.
2. **Mark Holes:** Hold the whiteboard against the wall in the desired orientation. Use a level to ensure it is straight. Mark the positions for the mounting holes.
3. **Drill Pilot Holes:** Drill pilot holes at the marked positions. Use an appropriate drill bit for your wall type (e.g., masonry bit for concrete, wood bit for studs).
4. **Insert Wall Plugs:** If your wall type requires them, insert the provided wall plugs into the drilled holes.
5. **Secure Brackets:** Attach the mounting brackets or screws (provided) to the wall, ensuring they are firmly secured.
6. **Hang Whiteboard:** Carefully lift and hang the whiteboard onto the secured mounting points. Ensure it is stable and securely fastened to prevent accidental falls.



Image: Close-up of the whiteboard's corner, illustrating the robust aluminum frame and grey plastic corner cap. This detail highlights the design and construction of the board, relevant for understanding mounting points.

4. OPERATING INSTRUCTIONS

4.1 Writing on the Whiteboard

Use only dry-erase whiteboard markers on the lacquered steel surface. Avoid using permanent markers, ballpoint pens, pencils, or abrasive writing tools, as these can permanently damage the surface.

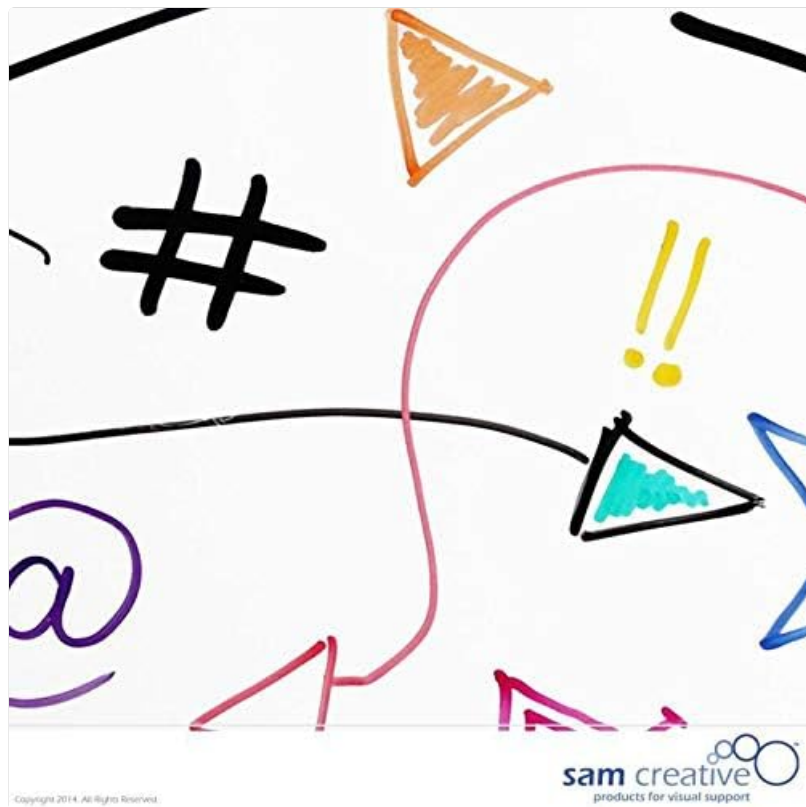


Image: The whiteboard surface displaying various colorful drawings and symbols, illustrating its primary function for writing and drawing with dry-erase markers.

4.2 Erasing the Whiteboard

Use a dedicated whiteboard eraser or a soft, dry cloth to remove marker ink. For stubborn marks or to refresh the surface, use a specialized whiteboard cleaning spray.

4.3 Using Magnets

The whiteboard surface is magnetic. You can easily attach notes, photos, or documents using standard magnets. Ensure magnets are clean and free of debris to avoid scratching the surface.



Image: A close-up of the bottom right corner of the whiteboard, featuring the 'sam creative' logo prominently displayed on the aluminum frame. This image highlights the brand detail.

5. MAINTENANCE AND CARE

5.1 Regular Cleaning

Regularly clean the whiteboard surface to prevent ghosting and maintain optimal writing performance. Use a dry-erase board cleaner for best results, especially after heavy use.

5.2 Deep Cleaning

For occasional deep cleaning, apply a specialized whiteboard cleaning solution to a soft, lint-free cloth and wipe the entire surface. Immediately wipe dry with another clean, dry cloth to prevent streaks.

5.3 Do Not Use

Avoid using abrasive cleaners, scouring pads, steel wool, or sharp objects on the whiteboard surface, as these can cause permanent damage, scratches, or dull the finish.

6. TROUBLESHOOTING

6.1 Marker Marks Not Erasing Completely (Ghosting)

- Ensure you are using only dry-erase markers specifically designed for whiteboards.
- Clean the board regularly with a whiteboard cleaner. Old marker residue can build up over time and cause ghosting.
- Avoid leaving marker ink on the board for extended periods, especially in direct sunlight.

6.2 Whiteboard Not Mounting Securely

- Verify that the wall plugs and screws are appropriate for your wall material and are securely fastened.
- Ensure the mounting hardware is correctly aligned and tightened according to the installation instructions.
- If unsure, consult a professional for installation.

7. PRODUCT SPECIFICATIONS

Feature	Detail
Model Number	WBCLS100200
Dimensions (L x H)	100 x 200 cm (approximately 39.4 x 78.7 inches)
Weight	Approximately 24.3 kg (53.6 lbs)
Color	White
Frame Material	Aluminum
Surface Type	Lacquered Steel, Magnetic
Mounting Type	Wall Mount (Portrait or Landscape)
Included Components	Mounting hardware, Accessory tray
Recommended Usage	Home, Office, School

8. WARRANTY AND SUPPORT

8.1 Warranty Information

This Sam Creative whiteboard comes with a 2-year warranty on spare parts. Please retain your proof of purchase for any warranty claims. The warranty covers manufacturing defects under normal use conditions.

8.2 Customer Support

For further assistance, questions, or support regarding your Sam Creative whiteboard, please contact Sam Creative customer service. Refer to the official Sam Creative website or your purchase documentation for current contact details.