

Manuals+

[Q & A](#) | [Deep Search](#) | [Upload](#)

manuals.plus /

› [OWLTRA](#) /

› [OWLTRA OW-1 Indoor Electric Rat Trap User Manual](#)

OWLTRA OW-1 (ERZ20)

OWLTRA OW-1 Indoor Electric Rat Trap User Manual

Brand: OWLTRA | Model: OW-1 (ERZ20)

INTRODUCTION

The OWLTRA OW-1 Indoor Electric Rat Trap is designed to provide an efficient and humane solution for rodent control within indoor environments. This device utilizes a high-voltage shock system to eliminate rats quickly and effectively. Its design incorporates safety features to protect children and pets, making it a suitable choice for various indoor settings.

Key Features:

- **Instant Kill System:** Delivers 6,000-10,000 volts of high-voltage shock for rapid elimination.
- **Pet-Safe Dual Infrared Sensor:** Activates only when a rodent is fully inside the trap, preventing accidental activation by children or small pets.
- **No-Mess Disposal:** Features magnetic latches for easy lid removal and hygienic disposal without direct contact.
- **Convenient Bait Area:** Designed for easy bait placement to attract rodents effectively.
- **LED Indicator Lights:** Provides visual alerts for rodent capture and low battery status.

SAFETY INFORMATION

Please read and understand all safety instructions before using the OWLTRA OW-1 Electric Rat Trap.

- **Keep Away from Children and Pets:** Although designed with a pet-safe trigger, always place the trap in areas inaccessible to children and non-target animals to ensure maximum safety.
- **Indoor Use Only:** This specific model (OW-1) is designed for indoor use. Do not use outdoors where it may be exposed to moisture or elements.
- **Avoid Contact with Metal:** Do not touch the metal plates inside the trap when it is powered on.
- **Dry Surfaces:** Use the trap only on dry, clean surfaces.
- **Power Off Before Handling:** Always turn the power switch to OFF and remove batteries before handling, cleaning, or disposing of contents.

Pet-safe dual infrared sensor



Image: The OWLTRA Electric Rat Trap features a pet-safe dual infrared sensor, designed to prevent accidental activation by small pets.

PACKAGE CONTENTS

The OWLTRA OW-1 Electric Rat Trap package includes:

- 1 x OWLTRA OW-1 Electric Rat Trap Unit
- 1 x User Manual
- *Note: 4 C batteries are required for operation and are not included.*

SETUP INSTRUCTIONS

1. Insert Batteries:

Locate the battery compartment. Insert 4 C batteries, ensuring correct polarity (+/-). Close the battery compartment cover securely.



Image: Step 1 - Insert 4 C batteries into the designated compartment.

2. Load the Bait:

Open the bait door located at the back of the trap. Place a pea-sized amount of high-protein bait, such as peanut butter or chicken feed, onto the bait area. Use a toothpick or cotton swab to avoid transferring human scent. Close the bait door securely.



Image: Step 2 - Apply bait to the designated area inside the trap.

3. Position the Trap:

Place the trap on a clean, dry surface along a wall where rodent activity has been observed. Ensure the entrance faces the wall. This encourages rodents to enter the trap.



Image: The trap is designed for indoor use and should be placed along a wall.

4. Power On:

Turn the power switch to the "ON" position. A green light will flash once, indicating the trap is armed and ready for operation.

Your browser does not support the video tag.

Video: This video demonstrates the unboxing and initial setup of the OWLTRA Electric Rat Trap, including battery installation and power-on sequence.

OPERATING INSTRUCTIONS

Once set up, the OWLTRA OW-1 Electric Rat Trap operates automatically:

- **Rodent Detection:** The dual infrared sensors detect when a rodent enters the trap and reaches the internal metal plates.
- **Instant Elimination:** Upon detection, the trap delivers a high-voltage shock, ensuring quick and humane elimination.
- **Indicator Lights:**
 - A **flashing green light** indicates a rodent has been captured.

- A **flashing red light** indicates low battery life.



Image: The LED indicator lights provide clear status updates for the trap.

MAINTENANCE

1. Disposal of Rodent:

When the green light flashes, turn the power switch to OFF. Pull off the trap's lid using the magnetic latches. Dispose of the rodent in the trash without direct contact. The trap deactivates automatically when the lid is removed for safety.

Magnetic latch, no-mess disposal



Image: The magnetic latch design allows for no-mess, no-touch disposal of captured rodents.

2. Cleaning the Trap:

After disposal, clean the interior and exterior chambers. Use warm water or a hydrogen peroxide topical solution with a soft-bristle brush. Ensure no water gets into the electronic top part. Thoroughly air dry all components before reassembling. The trap will not work properly if wet.



Image: Proper cleaning of the trap ensures continued effectiveness.

3. Re-bait and Reassemble:

Once clean and dry, re-bait the trap as per setup instructions. Reattach the top lid, ensuring it fastens firmly into place. The trap is now ready for reuse.

TROUBLESHOOTING

- **Trap Not Activating:**

- Ensure batteries are fresh and inserted with correct polarity.
- Verify the power switch is in the "ON" position.
- Check if the trap is completely dry after cleaning. Any moisture can prevent proper operation.
- Confirm the top lid is securely fastened.

- **Rodents Avoiding the Trap:**

- Try different types of bait. High-protein baits like peanut butter are generally effective.
- Relocate the trap to a different "sweet spot" where rodent activity is high, such as along walls or in dark, secluded areas.
- Ensure no human scent is on the bait or inside the trap by using gloves or a tool for bait placement.

- **Red Light Flashing:**

This indicates low battery. Replace all 4 C batteries with new ones.

SPECIFICATIONS

Feature	Detail
Brand	OWLTRA
Model Number	ERZ20
Color	Black
Style	Electric Rat Trap 1 Pack
Material	Plastic
Product Dimensions	10.2"L x 3.6"W x 4.5"H
Item Weight	1.6 Pounds
Power Source	Battery Powered (4 C batteries, not included)
Target Species	Rats
UPC	850012821335

Optimized for Full-Sized Rats



Pet-safe dual infrared sensor



No touch disposal



Quick & humane solution



60 rodents per set of 4 AA batteries

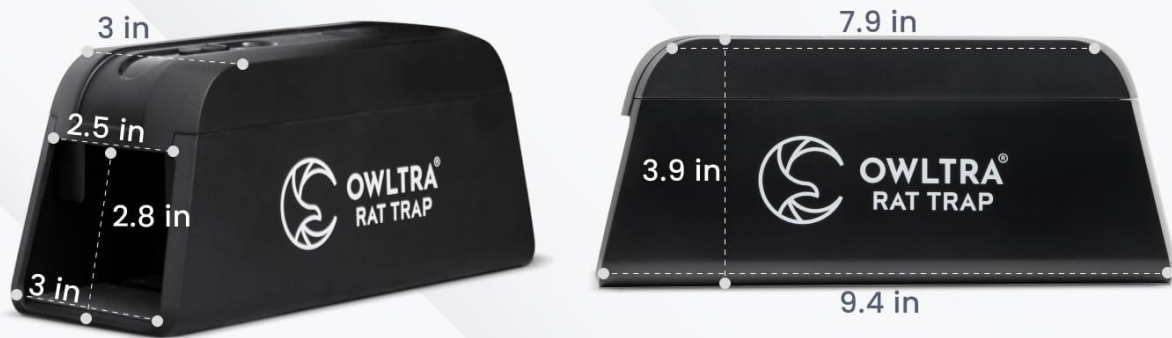


Image: Dimensions of the OWLTRA Rat Trap, optimized for full-sized rats.

WARRANTY AND SUPPORT

For warranty information or product support, please refer to the documentation included in your product packaging or visit the official OWLTRA website. Contact details for customer service are typically provided within the product manual or on the manufacturer's website.