

Manuals+

[Q & A](#) | [Deep Search](#) | [Upload](#)

manuals.plus /

› [isinlive](#) /

› [isinlive BS-03 HEPA Replacement Filter User Manual](#)

isinlive BS-03

isinlive BS-03 HEPA Replacement Filter User Manual

For PARTU and Slevoo BS-03 Air Purifiers

1. INTRODUCTION

This manual provides essential information for the proper use, installation, and maintenance of your isinlive BS-03 HEPA Replacement Filter. This filter is designed to maintain optimal air quality in your home when used with compatible air purifiers.



Image 1.1: The isinlive BS-03 HEPA Replacement Filter, a cylindrical filter with white pleated media and black end caps.

2. COMPATIBILITY

The isinlive BS-03 HEPA Replacement Filter is specifically designed for use with the following air purifier models:

- PARTU BS-03 Air Purifier
- Slevoo BS-03 Air Purifier

Important: Please verify your air purifier model matches BS-03 before purchasing and installing this replacement filter. This filter is not compatible with BS-01 models.

Compatible Models

Only Fits for **Part U, Part X & Slevoo BS-03** Air Purifier.



Premium
Quality



100%
Compatible



High
Performance

Image 2.1: Visual representation of the BS-03 filter and compatible air purifiers (Part U, Part X, Slevoo BS-03).

Compatible with Slevoo BS-03 Air Purifier

Not for BS-01



Image 2.2: Comparison showing the BS-03 filter is compatible with BS-03 air purifiers, but not with BS-01 models.

3. 3-IN-1 FILTRATION SYSTEM

The isinlive BS-03 replacement filter features a multi-layer, 3-in-1 filtration system designed to capture various airborne particles and odors, improving indoor air quality.

1. **Nylon Pre-filter:** This initial layer captures larger particles such as lint, hair, and pet fur, extending the life of the subsequent filters.
2. **HEPA Filter:** The High-Efficiency Particulate Air (HEPA) filter is engineered to capture 99.97% of airborne particles as small as 0.3 microns. This includes fine dust, pollen, pet dander, and other microscopic allergens.
3. **High-Efficiency Activated Carbon Filter:** This layer is designed to absorb various household odors, including pet odors, smoke, cooking fumes, and volatile organic compounds (VOCs).

3 Layer Filtration

BS-03 Replacement Filter

1 Nylon Pre-filter

Attach lint, hair and pet fur.

2 HEPA Filter

Attach fine dust, pollen and pet dander.

3 Activated Carbon Filter

Absorbs pet odors, smoke, cooking fumes.

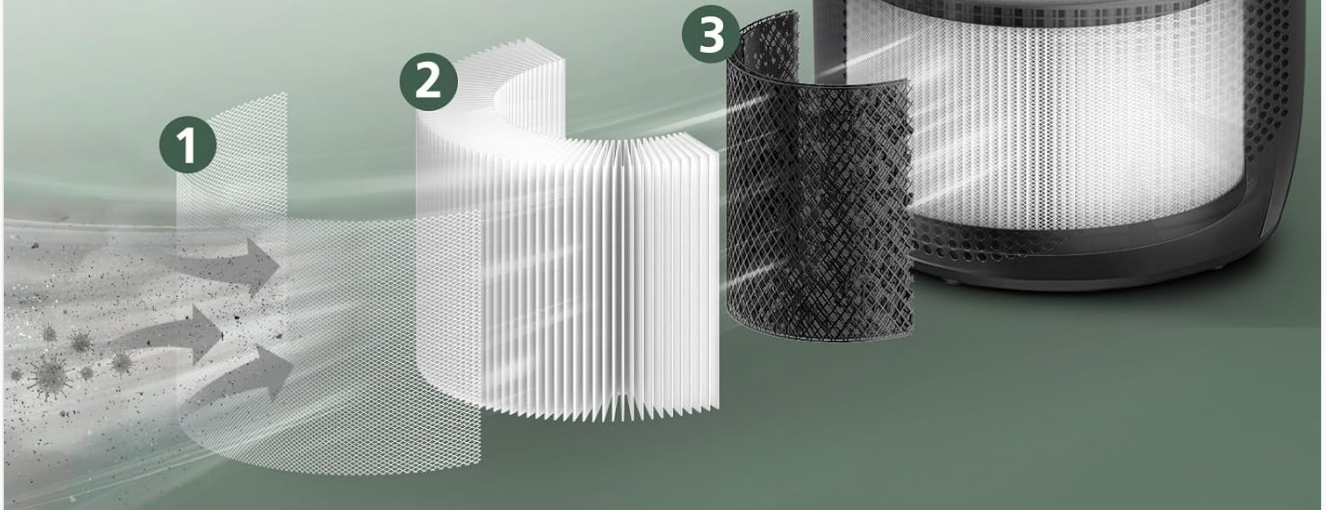


Image 3.1: Diagram illustrating the three layers of the BS-03 replacement filter: Nylon Pre-filter, HEPA Filter, and Activated Carbon Filter, and their respective functions.

HEPA Filter

Attach on **99.97%** of particles as small as **0.3-micron**

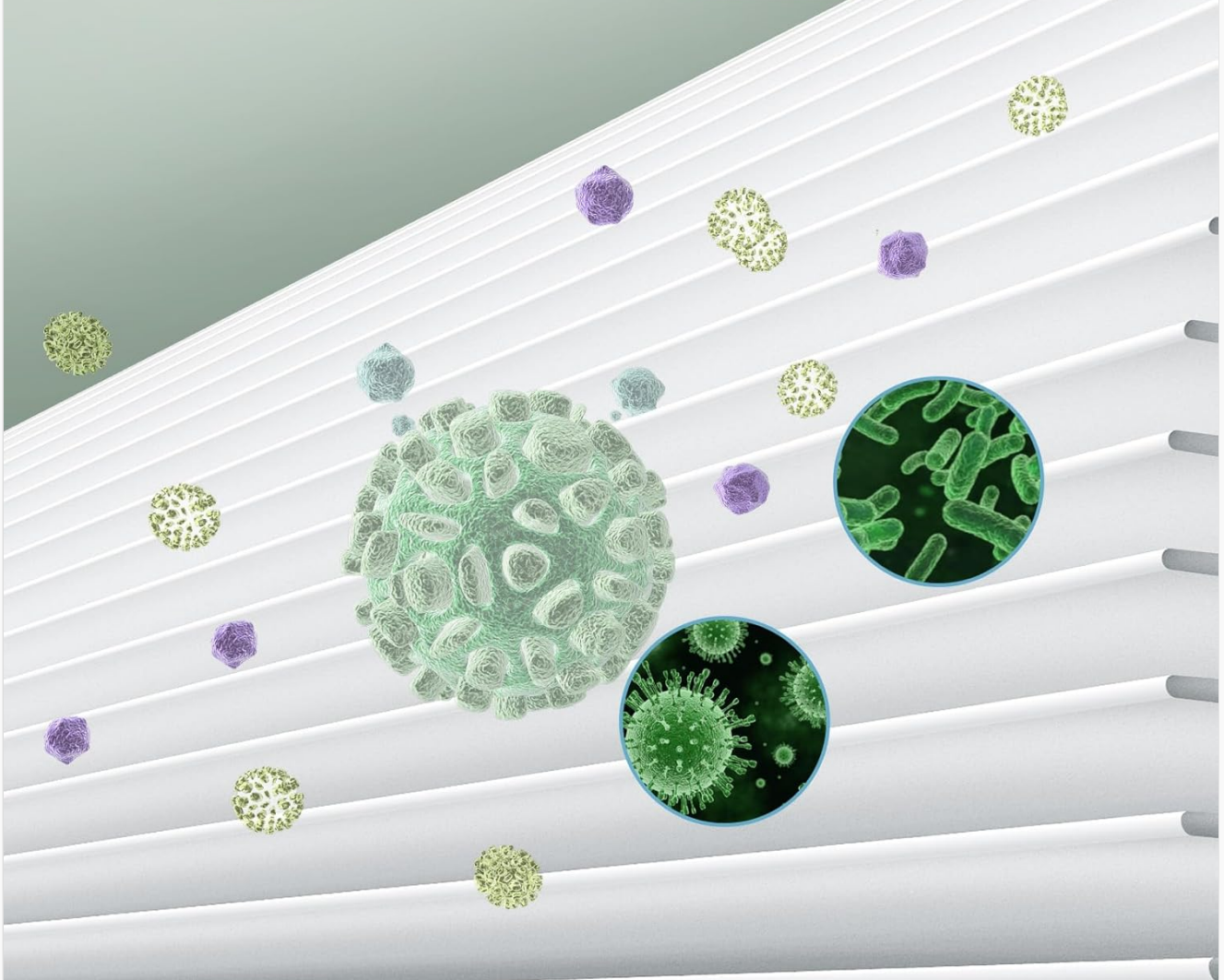


Image 3.2: Illustration demonstrating the HEPA filter's ability to capture 99.97% of particles as small as 0.3 microns, including dust, pollen, and bacteria.

4. INSTALLATION AND REPLACEMENT

Replacing the BS-03 filter is a straightforward process that does not require any special tools.

Steps for Filter Replacement:

1. **Power Off:** Ensure your air purifier is turned off and unplugged from the power outlet before beginning the replacement process.
2. **Access Filter Compartment:** Locate the filter compartment on your air purifier. This is typically at the bottom or back of the unit. Refer to your air purifier's specific user manual for exact instructions on opening the compartment.
3. **Remove Old Filter:** Carefully remove the used filter from the compartment. Dispose of the old filter according to local waste disposal guidelines.
4. **Unpack New Filter:** Remove the new isinlive BS-03 replacement filter from its protective packaging.

5. **Insert New Filter:** Place the new filter into the compartment, ensuring it is seated correctly and securely. The filter is designed for a perfect fit.
6. **Close Compartment:** Close the filter compartment cover securely.
7. **Restore Power:** Plug the air purifier back into the power outlet and turn it on.
8. **Reset Filter Indicator (if applicable):** If your air purifier has a filter replacement indicator light, follow your air purifier's instructions to reset it.

5. MAINTENANCE AND FILTER LIFE

To ensure optimal performance and air purification, regular filter replacement is crucial.

Filter Replacement Frequency:

- It is recommended to replace the BS-03 HEPA filter every **3 to 6 months**.
- The actual replacement interval may vary depending on air quality, usage frequency, and environmental factors (e.g., presence of pets, smoking, pollution levels).

A dirty filter can reduce the efficiency of your air purifier and negatively impact air quality. Replace the filter promptly when the filter indicator light illuminates or when you notice a decrease in air purification performance.

Smoke

Pet Dander

Pollen

Odors

Lint

Cooking Smell

VOCS

Dust

Superior Performance

New → After 6 months

Replace the filter every 3-6 months depends on usage, let you keep a healthier lifestyle with your pets.

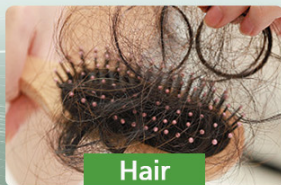
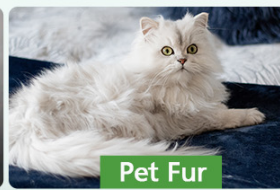
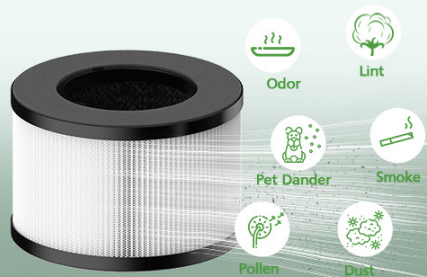
Image 5.1: Illustration showing the difference between a new filter and a filter after 6 months of use, emphasizing the need for timely replacement.

6. BENEFITS OF USING ISINLIVE BS-03 FILTER

Utilizing the isinlive BS-03 HEPA Replacement Filter contributes to a healthier indoor environment by addressing various airborne contaminants.

- **Allergen Reduction:** Effectively captures pollen, pet dander, and dust mites, which are common triggers for allergies and asthma.
- **Odor Elimination:** The activated carbon layer neutralizes unpleasant odors from pets, cooking, and smoke.
- **Particle Removal:** Filters out fine dust, lint, and other airborne particles, contributing to cleaner air.

860,000,00+
People Suffered from Pollutant Air.



Are You Troubled with These Things?

Our **BS-03** air filter can improve the air quality of your home.

Image 6.1: Visual depicting various air pollutants such as odor, lint, pet dander, smoke, pollen, dust, hair, cooking smells, and car exhaust, which the BS-03 filter helps to mitigate.

7. SPECIFICATIONS

Feature	Detail
Model Number	BS-03
Brand	isinlive
Filtration Type	3-in-1 HEPA Filter (Nylon Pre-filter, HEPA Filter, Activated Carbon Filter)
Dimensions	5.2 inches (Diameter) x 3.6 inches (Height)
Item Weight	8.8 ounces
Compatible Devices	PARTU BS-03 Air Purifier, Slevoo BS-03 Air Purifier
Recommended Replacement	Every 3-6 months
UPC	619191643042

BS-03 Replacement Filter

For Partu & Slevoo

BS-03 Air Purifier



Last 3-6
Months



Perfect Fit



High
Performance



Hassle-free



Image 7.1: Diagram showing the dimensions of the BS-03 replacement filter (5.2 inches diameter, 3.6 inches height).

8. TROUBLESHOOTING

If you encounter issues after replacing your filter, consider the following common solutions:

- **Air Purifier Not Turning On:** Ensure the filter compartment cover is fully closed and securely latched. Some air purifiers have a safety switch that prevents operation if the cover is open.
- **Reduced Airflow/Efficiency:** Verify that the new filter is correctly seated and not obstructed. If the issue persists, check if the filter is genuine and compatible with your model.
- **Filter Indicator Light Remains On:** After replacing the filter, you may need to manually reset the filter life indicator on your air purifier. Refer to your air purifier's specific user manual for instructions on how to reset the filter light.
- **Unusual Odors:** A new activated carbon filter may release a slight, harmless odor initially. This should dissipate within a few hours of operation. If strong or persistent odors occur, ensure the filter is correctly installed and not damaged.

9. CUSTOMER SUPPORT

For any questions, concerns, or issues regarding your isinlive BS-03 HEPA Replacement Filter, please contact our customer service team.

We are committed to providing high-quality replacement filters and excellent customer service. If you experience any problems, please do not hesitate to reach out to us. We aim to respond within 24 hours to assist you.

